

POWER HAMMER

SERVICE MANUAL



Read Manual Before Servicing Machine

Table of Contents

Table of Contents	1
Section 1 – Technical Data	2
1.1 Specifications	2
1.2 Applications and Proper Use	2
Section 2 – Safety Regulations	3
2.1 Warnings	3
2.2 Organizational Measures and Safety	3
2.3 Maintenance and Troubleshooting During Work	4
Section 3 – Maintenance	4
3.1 Maintenance Information	4
3.2 Repairs	5
3.3 Replacing the Chisel	5
Section 4 – Parts List and Diagrams	6
Section 5 - Warranty	8

Section 1 – Technical Data

1.1 Specifications

Product Specifications					
Max. Length	Typical Operating Length	Width	Max. Height	Weight	Speed
39" (99 cm)	24" (61 cm)	19" (48 cm)	44" (111.8 cm)	99 lbs (45 kg)	Manual

Machine Variants			
Region	Serial Number	Input Power	Plug Type
Domestic	TROLLEY-10XXXX	120V / 60 Hz	15A NEMA 5-15P Plug
International	TROLLEY-20XXXX	110V / 50 Hz	IEC 60309, 16A, 3W Plug

1.2 Applications and Proper Use

Warning!

This machine is designed for working horizontal surfaces, specifically chiseling and demolition. All other applications are deemed to be incorrect use. The manufacturers will not be liable for any damage resulting from incorrect use. The user is solely responsible for any risk.

Section 2 – Safety Regulations

2.1 Warnings

Be aware of warning and cautionary information, designated by a gray text box. These areas will contain information regarding dangers to the operator and/or the machine and instruction to prevent injury.

2.2 Organizational Measures and Safety

This instruction manual must be kept near the machine at all times.

Before starting any work with or on the machine, all authorized personnel must read the instruction manual and, in particular, the section regarding safety instructions.

Appliances used in different locations must be connected via a current surge prevention switch.

Always wear goggles when using the machine. Wearing gloves, non-slip shoes, and an apron is recommended.

Warning!

The max permitted noise level may be exceeded. Operators must wear noise-protective gear.

Sawdust and splinters must be removed while the machine is running.

Extreme electromagnetic interferences from the outside could temporarily cause variations in the rotation speed.

Caution!

Spare parts must conform to the manufacturer's specifications. This is always guaranteed with NFE original parts.

2.3 Maintenance and Troubleshooting During Work

Disconnect machine from power supply prior to performing any maintenance. Only unplug or plug in machine when it is turned off.

Keep mains lead clear of the machine during operation; always lead the cable away from behind.

The ventilation slots of the machine must be kept clear at all times. If the carbon brushes are worn, the brushes should be exchanged and the tool should be sent to a service center for inspection.

Warning!

All machinery can be dangerous for operating, maintenance, and repair personnel if used incorrectly. Owners are responsible for compliance with safety regulations during operations and maintenance of the safety devices supplied with the machine, and for providing suitable safety devices. It is strictly prohibited to remove or change the security system of the machine!

Section 3 – Maintenance

3.1 Maintenance Information

Warning!

Before beginning any repair work on the machine, make sure that it is turned off and disconnected from the power source.

Breakdowns caused by insufficient and unprofessional maintenance can lead to very high repair costs and long downtimes. Regular maintenance is essential. Operational safety and the service life of the machine depend on several factors, including proper maintenance.

The following table contains information on schedules, inspections, and maintenance for normal working. The times are based on daily use. If the number of working hours shown here is not reached in the corresponding period, the period may be extended. However, a complete inspection must take place every year.

Because operation conditions can vary considerably, it is not possible to state in advance how often checks for wear, inspections, maintenance, and repairs are necessary. A practical inspection schedule should be drawn up taking the operating conditions into account. Contact NFE if you require further assistance.

3.2 Repairs

It is recommended that the repairs are carried out by NFE or an authorized dealer.

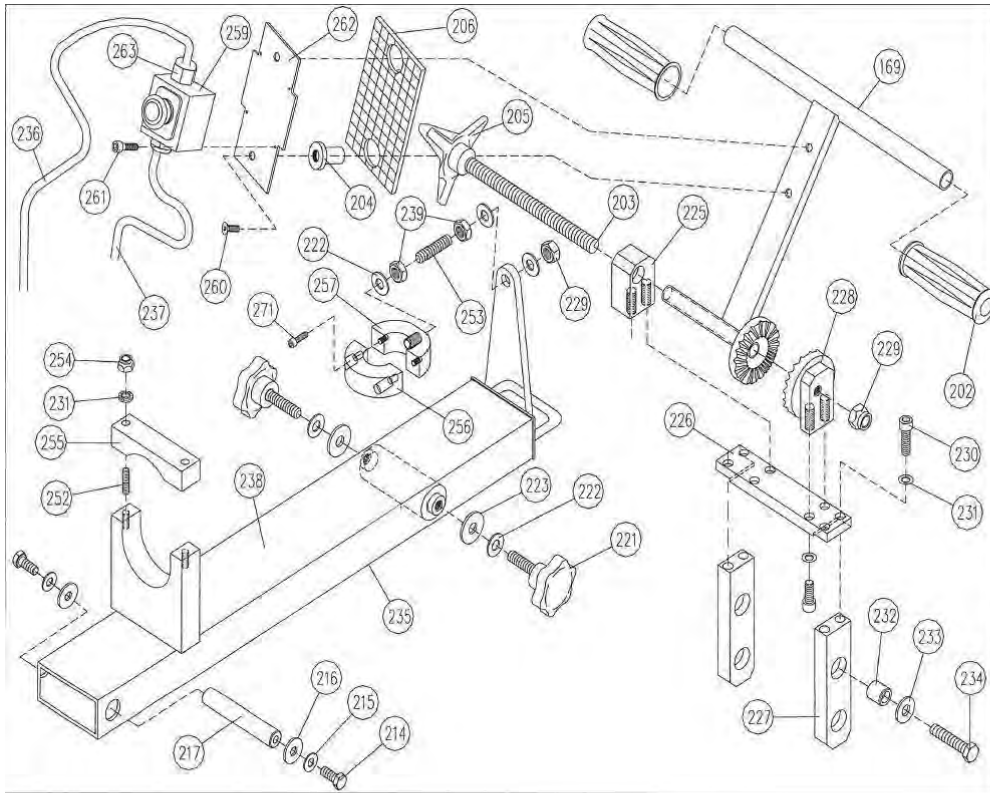
Always keep stocks of spare parts that cannot be supplied at short notice. Production losses are usually more expensive than the costs of the spare part. Any screws that are removed must be replaced in the same quality and design. Only use NFE original parts.

3.3 Replacing the Chisel

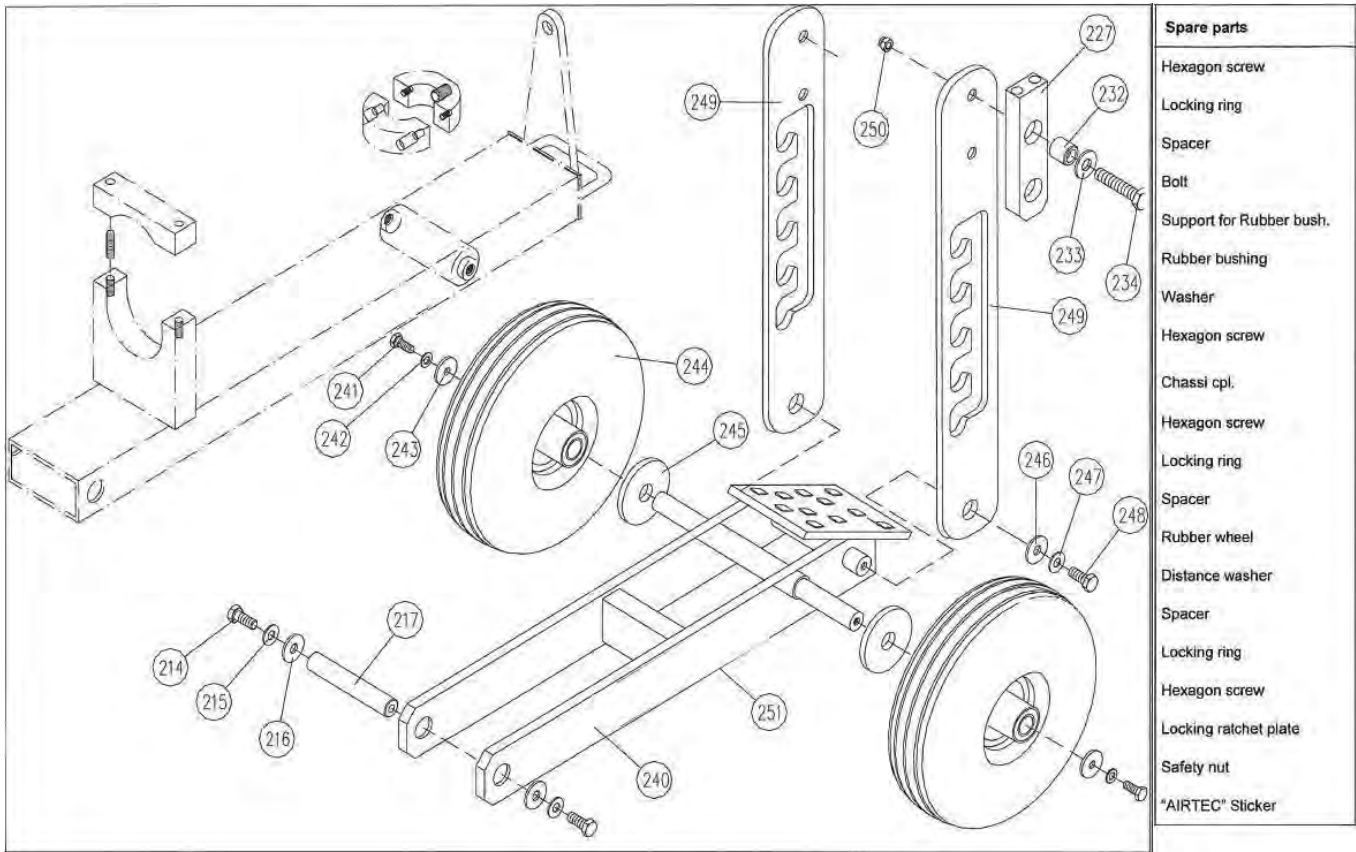
1. Unplug the hammer.
2. Tilt the machine backwards, so that it lies with its handle on the floor.
3. With one hand, twist the chisel lock 180°; pull the chisel out with the other hand.
4. Hold the new chisel with the locking surface facing up, and slide the chisel in.
5. Turn the chisel lock back and ensure it is fixed in place.



Section 4 – Parts List and Diagrams



Pos.	Spare parts	Pos.	Spare parts
169	Handle upper part	252	Threaded pin
202	Rubber grip	253	Threaded pin
203	Threaded rod M12	254	Safety nut
204	Shock-reducer	255	Holder front upper part
205	Star-shaped handle	256	Clamping piece part front
206	Rubber plate	257	Clamping piece part back
214	Hexagon screw	259	Emergency-Stop switch USA
215	Locking ring	260	Countersunk screw
216	Spacer	261	Allen screw
217	Bolt	262	Baffle plate
221	Star grip	263	Conduit gland
222	Locking ring	271	Allen screw
223	Washer		
225	Top mount		
226	Carrier plate		
227	Support for Rubber bush		
228	Outer support		
229	Safety nut		
230	Allen screw		
231	Locking ring		
232	Rubber bushing		
233	Washer		
234	Hexagon screw		
235	"PM-1600" Sticker		
236	Lead wire 5m 2,5mm ²		
237	Connection cable 2,5mm ²		
238	Housing cpl. For HILTI		
239	Hexagon nut		



Section 5 - Warranty

National Flooring Equipment Inc. (referred to as “the Company”) warrants that each new unit manufactured by The Company, to be free from defects in material and workmanship in normal use and service for a period of twelve (12) months from date of shipment from the Company. For administrative ease, will honor warranty for a period of fifteen (15) months from date of shipment from the company. Accessories or equipment furnished and installed on the product by the Company but manufactured by others, including but not limited to: engines, motors, electrical components, transmissions etc., shall carry the accessory manufacturers own warranty. Battery warranties are prorated over the warranty period. Customer is responsible for the inspection of equipment / parts upon delivery. Freight damages reported beyond authorized time frame will not be honored.

The Company, at its determination of defect, will repair or replace any product or part deemed to be defective in material or workmanship within specified warranty time period. All product determinations and / or repairs will take place at the designated Company repair facility, or at a certified warranty location designated by the Company. The Company will coordinate and be responsible for all freight expenses associated with valid warranty claims. Freight and shipping expenses associated with abuse or misuse will be back charged to the Distributor/Customer. The Company reserves the right to modify, alter or improve any part / parts without incurring any obligation to replace any part / parts previously sold without such modified, altered or improved part / parts. In no event shall the seller or manufacturer of the product be liable for special, incidental, or consequential damages, including loss of profits, whether or not caused by or resulting from the negligence of seller and / or the manufacturer of the product unless specifically provided herein. This warranty shall not apply to any products or portions there of which have been subjected to abuse, misuse, improper installation or operation, lack of recommended maintenance, electrical failure or abnormal conditions and to products which have been tampered with, altered, modified, repaired, reworked by anyone not approved or authorized by the Company or used in any manner inconsistent with the provisions of the above or any instructions or specifications provided with or for the product. Any and all unauthorized onsite warranty work conducted by unauthorized personnel or any outside person(s), is not covered by the Company unless the work has been pre-authorized by a predetermined manufacturer representative. This excludes wearable parts and/or consumables.

Defective or failed material or equipment shall be held at the purchaser’s premises until authorization has been granted by the Company to return or dispose of defective products. Products returned for final inspection must be returned with a manufacturer authorized Return Material Authorization (RMA). Any unauthorized return of equipment will be declined at the dock by the Company. Any non-approved items returned with approved returned items are subject to rejection and will not be credited. Credit will be issued for material found to be defective upon the Company’s inspection based on prices at time of purchase.

TO OBTAIN SERVICE CONTACT NATIONAL FLOORING EQUIPMENT, INC. TOLL FREE AT 800-245-0267 FOR A REPAIR AUTHORIZATION NUMBER. COD FREIGHT RETURNS WILL NOT BE ACCEPTED. FREIGHT COLLECT SHIPMENTS WILL NOT BE ACCEPTED. WARRANTY REPAIRS MUST BE ACCOMPANIED BY DATE OF PURCHASE RECEIPT AND A RETURN/REPAIR AUTHORIZATION NUMBER.

RETURN/REPAIR AUTHORIZATION NUMBER: _____

MACHINE SERIAL NUMBER: _____



9250 Xylon Avenue N • Minneapolis, MN 55445 • U.S.A.

Toll-free 800-245-0267 • Phone 763-315-5300 • Fax 800-648-7124 • Fax 763-535-8255

Web Site: www.nationalequipment.com • E-Mail: info@nationalequipment.com