

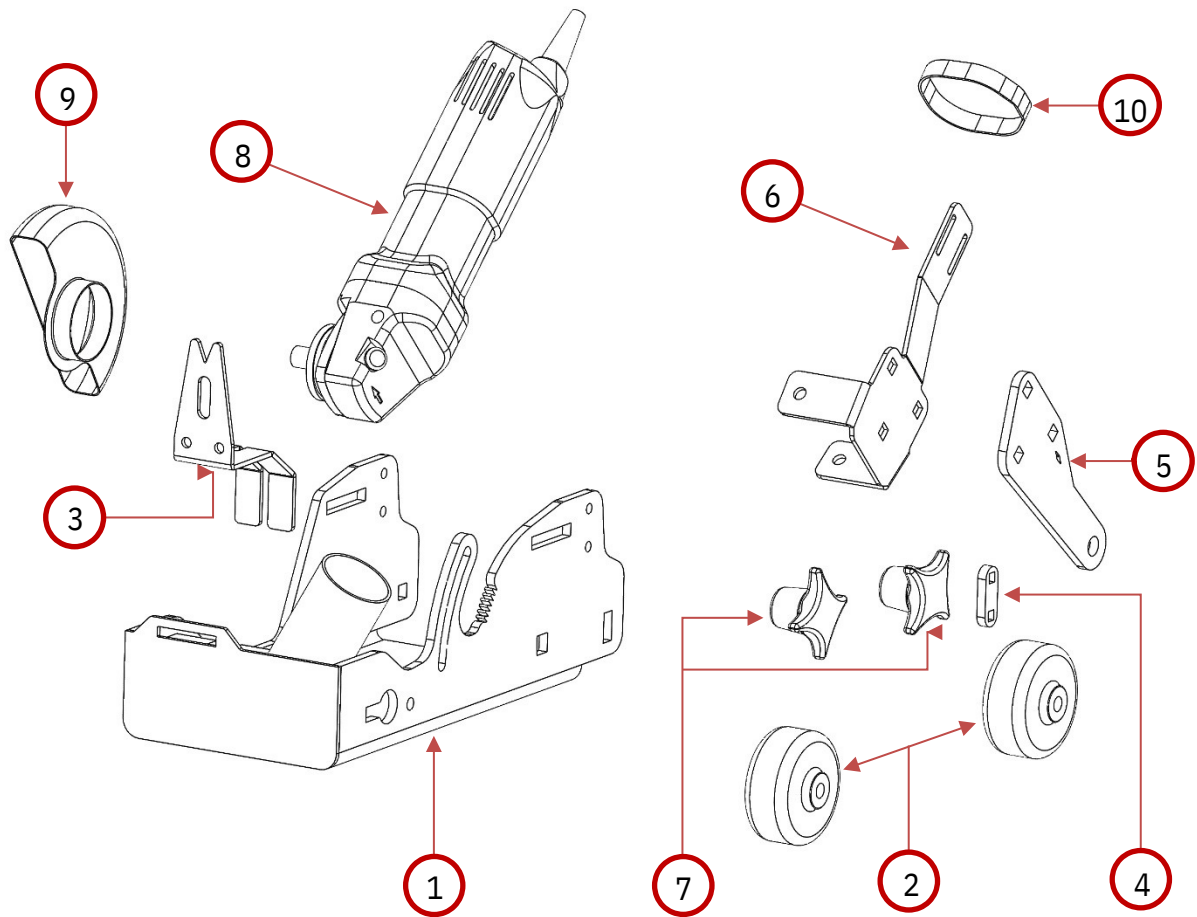
# GorillaConcreteTools

## GMS-5 Electric Multi-Saw

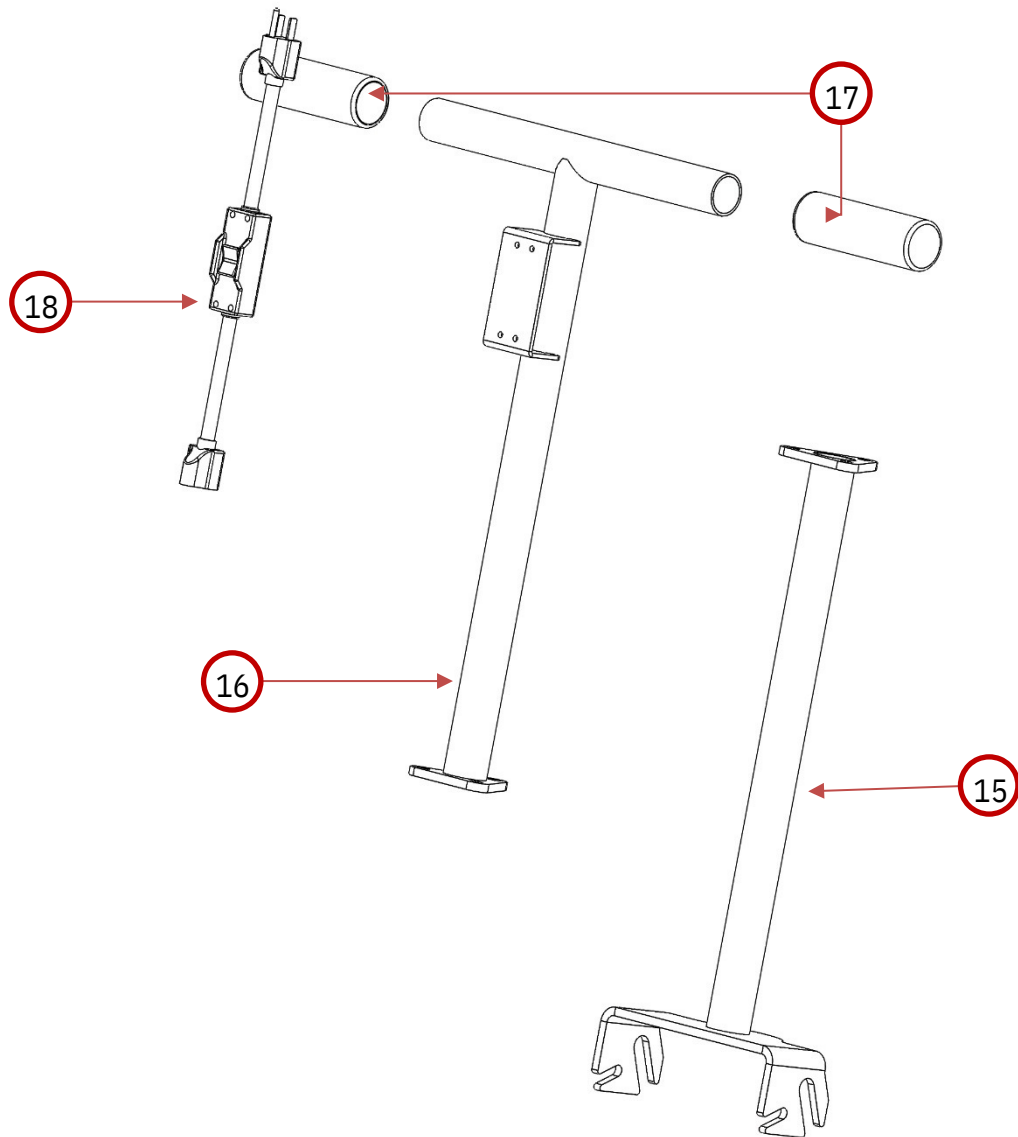
### Product Manual



# Parts Diagram



Part #	Description
GMS5 - 1	Saw Base
GMS5 - 2	Wheels (sold individually)
GMS5 - 3	Dust Guard
GMS5 - 4	Handle Alignment Tab
GMS5 - 5	Motor Pivot
GMS5 - 6	Motor Mount
GMS5 - 7	4-Arm Knobs (sold individually)
GMS5 - 8	Powerhead
GMS5 - 9	Blade Guard
GMS5 - 10	Powerhead Mounting Strap



Part #	Description
GMS5 – 15	Lower Handle
GMS5 – 16	Upper Handle
GMS5 – 17	Handle Grips
GMS5 – 18	Electrical Box
GMS5 – 19	Complete Handle Assembly

# Product Set Up



## Warnings!

*These instructions are only intended to show you the set-up of our saw. Do not use until you have been trained on how to properly operate a walk behind concrete saw.*



Stay clear of others while in operation. Debris can fly from blade area. Eye and face protection required.



Respirator required. Operate in well ventilated area.

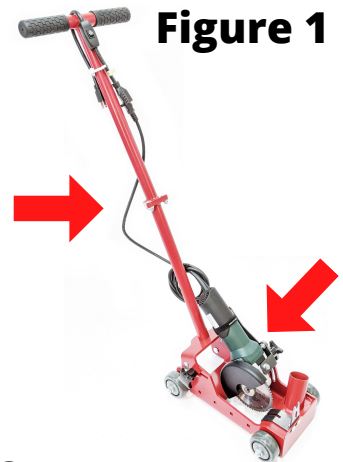


Ear protection required.

### Set-Up: Red Arrows (Fig. 1)

1. Bolt split handle together with bolts provided
2. Install handle as shown in Fig. 1. Set handle onto alignment tabs and slide quick release handles to rear to lock the handle in place.
3. Apply powerhead trigger lock.

*Never leave the unit plugged in while unattended or while replacing the blade*



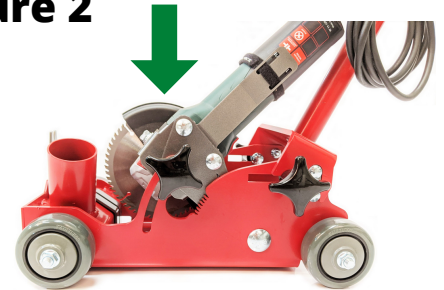
**Figure 1**

### Blade Installation: Green Arrows (Fig. 2)

1. Unplug the power cord from the power source before removal.
2. Remove outer blade clamp and install the blade.
3. Firmly tighten the blade.

*\*We recommend an 5" blade\**

**Figure 2**



### Blade Pointer Alignment: Blue Arrows (Fig. 3)

1. After proper blade installation, loosen the two bolts on the front of the unit.
2. Slide the pointer/dust port left or right to center blade within the dust port.
3. Tighten bolts.

**Figure 3**



### Feature Call Outs: Yellow Arrows (Fig. 4)

- 2-inch dust port: Minimum 250 CFM required
- Blade depth adjustment knob and depth reference points.
- Quick release handle
- Adjustable leveling wheel

**Figure 4**

