

# 8274-4 PLANETARY GRINDER OPERATING MANUAL



Read Manual Before Operating Machine



# Table of Contents

---

## Contents

<b>Table of Contents</b> .....	<b>3</b>
<b>Features and Specifications</b> .....	<b>4</b>
<b>Safety</b> .....	<b>6</b>
<b>Components and Assembly</b> .....	<b>7</b>
Loading and Unloading .....	7
Handle Assembly .....	7
Vacuum Port .....	7
Rubber Dust Guard .....	7
Magnetic Tooling Holder Installation .....	8
Pre-Production Safety Checks .....	8
<b>Operation</b> .....	<b>9</b>
Start-Up Procedure .....	9
Shut-Down Procedure .....	9
Accessory Set-Up .....	9
Accessory Attachment .....	10
<b>Troubleshooting Guide</b> .....	<b>11</b>
<b>Warranty</b> .....	<b>13</b>

# Features and Specifications



## FEATURES

**Adjustable Handle** - Adjusts in three separate locations for operator comfort.

**Dust Collector Port** - Located in the back of the machine to ensure hose will not disrupt production.

**Flip Style Weights** - Allows operator to easily add down pressure when required.

**90° Rotating Grinder Deck** - Grants easy access to the quick-change magnetic tooling.

**Control Box** - Self-diagnoses and minimizes blown circuit breakers with a variable speed feature.

**Adjustable Rubber Dust Guard** - Provides a dustless operation.

**15A/20A Switch** - This machine normally runs on 20A; however, the switch on the side of the control box allows the operator to run the machine on 15A when there is a limited power supply.

## Product Specifications

Width	Height (Min.-Max.)	Length (Min.-Max.)	Weight	Disc Size	Power / Frequency	HP	Motor
20" (51 cm)	27.5-52" (70-132 cm)	38.5-75" (98-190.5 cm)	388 lbs (176 kg)	18.5" (47 cm)	120 V / 60 Hz, single phase input	3	3-Phase operation

# Safety

## GENERAL RULES FOR SAFE OPERATION

Before use, anyone operating or performing maintenance on this equipment must read and understand this manual, as well as any labels packaged with or attached to the machine and its components. Read the manual carefully to learn equipment applications and limitations, as well as potential hazards associated with this type of equipment. Keep manual near machine at all times. If your manual is lost or damaged, contact National Flooring Equipment (NFE) for a replacement.

### Personal

#### Dress properly and use safety gear.

Do not wear loose clothing; it may be caught in moving parts. Anyone in the work area must wear safety goggles or glasses, hearing protection during extended use, and a dust mask for dusty operations. Hard hats, face shields, safety shoes, etc. should be worn when specified or necessary.

#### Maintain control; stay alert.

Keep proper footing and balance, and maintain a firm grip. Observe surroundings at all times and use common sense. Do not use when tired, distracted, or under the influence of drugs, alcohol, or any medication that may cause decreased control.

#### Keep hands away from all moving parts and tooling.

Wear gloves when changing tooling. Remove tooling when machine is not in use and/or lower cutting head to the floor.

#### Do not force equipment.

Equipment will perform best at the rate for which it was designed. Excessive force only causes operator fatigue, increased wear, and reduced control.

### Environment

#### Avoid use in dangerous environments.

Do not use in rain, damp or wet locations, or in the presence of explosive atmospheres (gaseous fumes, dust, or flammable materials). Remove materials or debris that may be ignited by sparks. Keep work area tidy and well-lit - a cluttered or dark work area may lead to accidents. Extreme heat or cold may affect performance.

#### Protect others in the work area and be aware of surroundings.

Provide barriers or shields as needed to protect others from debris and machine operation. Children and other bystanders should be kept at a safe distance from the work area to avoid distracting the operator and/or coming into contact with the machine. Operator should be aware of who is around them and their proximity. Support personnel should never stand next to, in front of, or behind the machine while the machine is running. Operator should look behind them before backing up.

#### Guard against electric shock.

Ensure that machine is connected to a properly grounded outlet. Prevent bodily contact with grounded surfaces, e.g. pipes, radiators, ranges, and refrigerators. When scoring or making cuts, always check the work area for hidden wires or pipes.

### Maintenance & Repairs

#### Begin maintenance work only when the machine is shut down, unplugged, and cooled down.

#### Use proper cleaning agents.

Ensure that all cleaning rags are fiber-free; do not use any aggressive cleaning products.

#### Schedule regular maintenance check-ups.

Ensure machine is properly cleaned and serviced. Remove all traces of oil, combustible fuel, or cleaning fluids from the machine and its connections and fittings. Retighten all loose fittings found during maintenance and repair work. Loose or damaged parts should be replaced immediately; use only NFE parts.

#### Do not weld or flame-cut on the machine during repairs, or make changes to machine without authorization from NFE.

### Equipment

#### Use proper parts and accessories.

Only use NFE-approved or recommended parts and accessories. Using any that are not recommended may be hazardous.

#### Ensure accessories are properly installed and maintained.

Do not permanently remove a guard or other safety device when installing an accessory or attachment.

#### Inspect for damaged parts.

Check for misalignment, binding of moving parts, loose fasteners, improper mounting, broken parts, and any other conditions that may affect operation. If abnormal noise or vibration occurs, turn the machine off immediately. Do not use damaged equipment until repaired. Do not use if power switch does not turn machine on and off. For all repairs, insist on only identical NFE replacement parts.

#### Maintain equipment and labels.

Keep handles dry, clean, and free from oil and grease. Keep cutting edges sharp and clean. Follow instructions for lubricating and changing accessories. Motor and switches should be completely enclosed at all times with no exposed wiring. Inspect cord regularly. Labels carry important information; if unreadable or missing, contact NFE for a free replacement.

#### Avoid accidental starting; store idle equipment.

When not in use, ensure that the machine is unplugged; do not turn on before plugging in. Store in a dry, secured place. Remove tooling when storing, and keep away from children.



**CAUTION!** ENSURE PROPER USE OF EXTENSION CORDS. IF AMP DRAW IS HIGHER THAN SHOWN ON TABLE OR CORD IS LONGER THAN 50 FT, SEE AN ELECTRICIAN.

ASSUMPTIONS: 3% ALLOWABLE VOLTAGE DROP, COPPER CONDUCTORS RATED FOR 75°C, 1.25 SAFETY FACTOR, CORD VOLTAGE RATING OF 600VAC, PROPER CORD TYPES (STO, STOW, SOOW).

Amp Draw	Gauge
0-12	14
13-16	12
14-24	10
25-40	8

# Safety

## GRINDER SAFETY GUIDELINES

Before use, anyone operating this equipment must read and understand these safety instructions.

### Grinding

#### **Beware of hidden obtrusions.**

Watch out for hidden dangers and protrusions in flooring. Do not use on largely uneven surfaces.

#### **Avoid contact with hot tooling and shroud.**

Do not touch the tooling or shroud without proper hand protection. Both become hot during operation and remain hot after stopping the machine.

#### **Use correct tooling and accessories.**

Provide barriers or shields as needed to protect others from debris.

#### **Use for correct applications.**

Do not force equipment to do heavier duty work than it was made for.

#### **Do not block the machine's air flow.**

Blocking ventilation slots or air flow will result in damage to the machine. Leave space for air to flow freely during operation.

#### **Use dead man cable during operation.**

Loss of control of the grinder could cause damage, injury, or death.

### Dust Collection

#### **Use with appropriate dust collecting system.**

Do not operate machine designed for use with a dust collector without the dust collector. Ensure dust collector is on and operating properly while grinding.

#### **Use with appropriate dust collection hose.**

Do not operate the machine without the hose securely attached to the inlet of the dust collector and the outlet of the grinder. In order to maintain system efficiency, do not use a damaged hose.

#### **Dispose of collected waste.**

Do not leave the dust collector bag full of waste. Handle and dispose of bag and waste in accordance with all applicable local, state, and federal regulations. Dispose of waste prior to transport.

### Battery (Propane Machines Only)

#### **Remove personal metal items when working with battery.**

A battery can produce a short circuit current sufficient enough to weld metal objects, causing severe burns. Be careful to not drop metal tools on the battery, as a spark or short circuit could cause an explosion.

#### **Never smoke or allow a spark or flame near the battery.**



**WARNING:** BE CAUTIOUS WHEN WORKING WITH BATTERY. IF ELECTROLYTIC ACID GETS IN THE EYES, IMMEDIATELY FLUSH OUT WITH COLD, FRESH WATER FOR AT LEAST 10 MINUTES AND GET MEDICAL HELP.



**WARNING:** GRINDING/CUTTING/DRILLING OF MASONRY, CONCRETE, METAL AND OTHER MATERIALS CAN GENERATE DUST, MISTS AND FUMES CONTAINING CHEMICALS KNOWN TO CAUSE SERIOUS FATAL INJURY OR ILLNESS, SUCH AS RESPIRATORY DISEASE, CANCER, BIRTH DEFECTS OR OTHER REPRODUCTIVE HARM. IF YOU ARE UNFAMILIAR WITH THE RISKS ASSOCIATED WITH THE PARTICULAR MATERIAL BEING CUT, REVIEW THE MATERIAL SAFETY DATA SHEET AND/OR CONSULT YOU EMPLOYER, THE MATERIAL MANUFACTURER/SUPPLIER, GOVERNMENTAL AGENCIES SUCH AS OSHA AND NIOSH AND OTHER AUTHORITIES ON HAZARDOUS MATERIALS. CALIFORNIA AND SOME OTHER AUTHORITIES, FOR INSTANCE, HAVE PUBLISHED LISTS OF SUBSTANCES KNOWN TO CAUSE CANCER, REPRODUCTIVE TOXICITY, OR OTHER HARMFUL EFFECTS. CONTROL DUST, MIST AND FUMES AT THE SOURCE WHERE POSSIBLE. IN THIS REGARD USE GOOD WORK PRACTICES AND FOLLOW THE RECOMMENDATIONS OF THE MANUFACTURER/SUPPLIER, OSHA/NIOSH, AND OCCUPATIONAL AND TRADE ASSOCIATIONS. WHEN THE HAZARDS FROM INHALATION OF DUST, MISTS AND FUMES CANNOT BE ELIMINATED, THE OPERATOR AND ANY BYSTANDERS SHOULD ALWAYS WEAR A RESPIRATOR APPROVED BY OSHA/MSHA FOR THE MATERIAL BEING CUT.

# Components and Assembly

## LOADING AND UNLOADING

- Always disconnect from power source before transporting.
- Ensure blanks are installed in magnetic tooling pockets during transport.
- Loosen handle securing bolt to slide handle down for loading/unloading. Re-tighten the bolts when handle is at the desired height.



**CAUTION:** HANDLE MUST BE SECURED WITH BOTH BOLTS; BE AWARE OF ROTATING WEIGHTS. FAILURE TO DO SO COULD CAUSE SERIOUS INJURY.

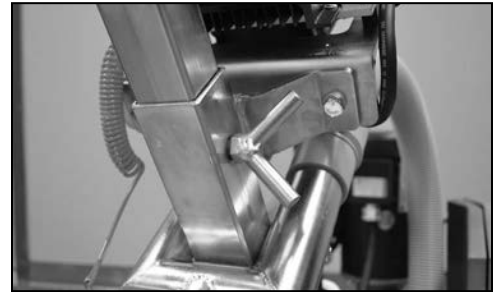


FIG. 1

## HANDLE ASSEMBLY

Handle adjusts in both height and angle. To make adjustments, complete the following:

1. Loosen the handle bolt and adjust the handle to the desired length (Figure 1); re-tighten bolt.
2. Adjust handle grip to desired angle and firmly secure (Figure 1.1).
3. Adjust handle to desired angle and secure with clip and support pin (Figure 1.2).



FIG. 1.1

## VACUUM PORT

The machine has a dust collection port located at the rear (Figure 2A). Use a dust collection hose that snugly fits either on the outside or the inside of the port. The dual short hose connection runs from the grinder deck to the 'Y' splitter (Figure 2B).



**WARNING:** MAKE SURE TO USE THE PROPER INDUSTRIAL HEPA DUST COLLECTOR BASED ON THE TYPE OF SURFACE APPLICATION. FAILURE TO DO SO COULD RESULT IN EMISSIONS OF HAZARDOUS PARTICULATES. ENSURE THE SYSTEM BEING USED COMPLIES WITH OR EXCEEDS OSHA RECOMMENDED STANDARDS. THE RUBBER DUST GUARD MUST BE SECURE AND COVER ALL THE WAY TO THE FLOOR SURFACE.



FIG. 1.2

## RUBBER DUST GUARD



**WARNING:** NEVER OPERATE THE MACHINE WITHOUT THE RUBBER DUST GUARD PROPERLY IN PLACE. ENSURE DUST GUARD FORMS A SEAL FROM THE GRINDER DECK TO THE FLOOR. FAILURE TO DO SO COULD CAUSE SERIOUS HARM TO THE OPERATOR AND/OR THOSE IN PROXIMITY OF THE GRINDER. NEVER MOUNT OR RE-ADJUST THE RUBBER DUST GUARD WITH THE MACHINE PLUGGED IN. DISCONNECT MACHINE FROM POWER SOURCE BEFORE MAKING ADJUSTMENTS.

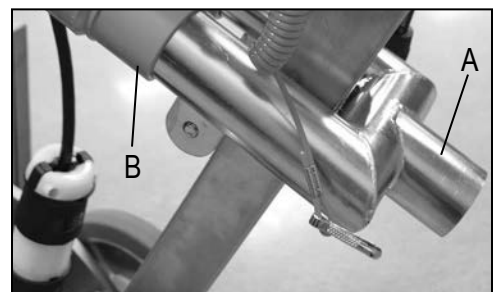


FIG. 2

## Attaching

1. Ensure machine is in upright position.
2. Attach dust guard (Figure 3), keeping as close to the floor as possible.  
**Note:** If dust is exposed when operating machine, stop machine and readjust dust guard.

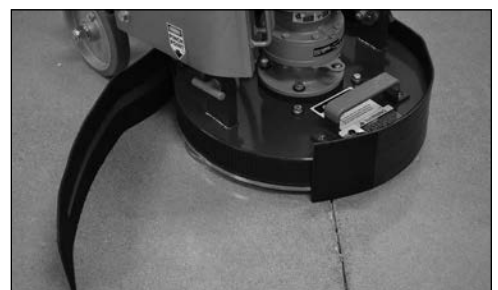


FIG. 3

# Components and Assembly

---



FIG. 4



FIG. 4.1

## Positioning

1. Unplug machine from power source.
2. With machine sitting in the operating position, remove rubber dust guard held on by Velcro.
3. Starting at one end of the shroud, place guard to rest on floor surface.
4. Firmly press rubber guard into securing Velcro on shroud.
5. Wrap rubber guard all the way around the shroud, making sure the guard rests on the floor surface and is secure (Figure 3).
6. Inspect for air gaps between dust guard and floor.

**Note:** If guard-securing Velcro becomes loaded up with debris, wash out with mild soap or blow out with an air hose. If Velcro on the machine is damaged or worn out, replace before using the machine. If the rubber guard is cut, damaged or worn out, replace before using the machine.

## WEIGHTS

Weights rotate front to back.

- To apply added weight, one or or both weights can be rotated forward (Figure 4).
- To take load off machine, pull weights to the back (Figure 4.1).
- If circuit breakers trips at the power source, pull weight(s) to the back to reduce head pressure.

## PRE-PRODUCTION SAFETY CHECKS

Prior to starting the grinder, complete the following safety checks:

- Ensure all morflex coupler assemblies and magnetic tooling plates are securely fastened.
- Clean any dust or debris from the magnetic tooling holders prior to installing tooling or Velcro adapter plates.
- Ensure the dust guard is properly in place by forming a seal from the grinder deck to the surface of the floor being prepared.
- Attach the tether cord to both the machine and the operator.



## START-UP PROCEDURE

1. Plug the controller into a properly sized extension cord (see Safety).
2. Plug the extension cord into an adequate power supply.
3. Attach the control box safety tether to the operator's wrist.
4. Move the FWD/REV toggle switch to the desired "forward" or "reverse" position. (Figure 5A)
5. The operator should apply a light amount of pressure to the grinder handle to relieve the initial torque created when starting the machine.
6. Move the power toggle switch to the "ON" position (Figure 5B).

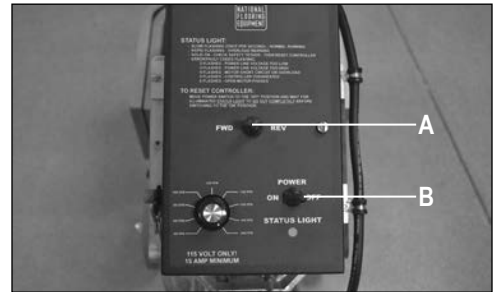


FIG. 5

## SHUT-DOWN PROCEDURE

To turn the grinder off move the toggle switch to the "OFF" position.

## ACCESSORY SET-UP

When grinding, down pressure relates to two aspects: (1) the amount of weight on the machine, and (2) the surface area the weight is being distributed across.

- If tooling with a smaller segment is used, the amount of down pressure applied at the point of contact is increased.
- Larger segments of tooling will decrease the amount of down pressure.

Down pressure will directly affect production rates and of profile achieved. If more down pressure is desired, insert the tooling segments into two of the four magnetic pockets. Be sure to insert the tooling into the magnetic pockets directly across from one another.

The machine is designed to run in forward or reverse for most applications:

- With the grinder switch in "forward," the tooling should turn clockwise and the drum should turn opposite (Figure 6).
- With the grinder switch in "reverse," the tooling should turn counterclockwise and the drum should turn opposite (Figure 7).

**Note:** PCDs and carbides can only be used in forward motion.

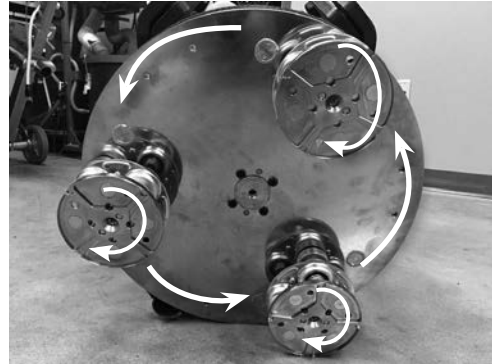


FIG. 6

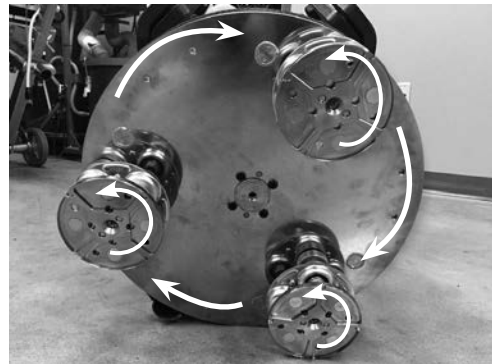


FIG. 7

# Operation



FIG. 8

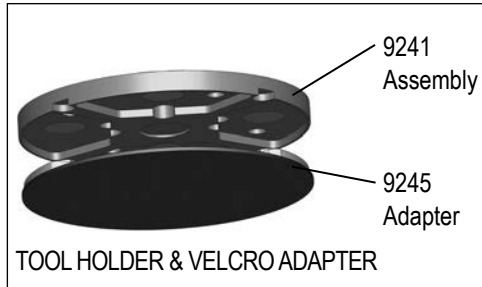


FIG. 9

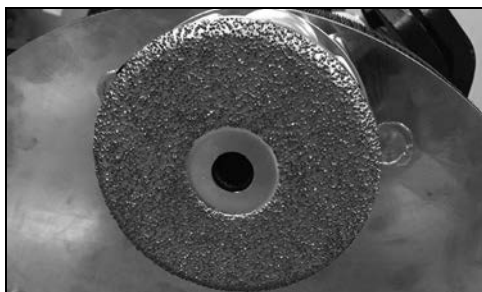


FIG. 10



FIG. 11

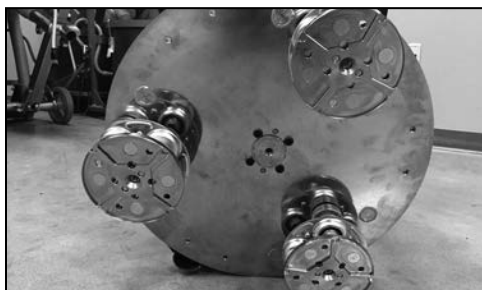


FIG. 12

## ACCESSORY ATTACHMENT

1. Tilt motor back to expose the underside of the machine.
2. Clean foreign material from magnet prior to tooling installation.
3. Place the individual tooling segments into two or four of the magnetic pockets. Be careful around pinch points, as the tooling segments will snap into place as the magnetic connection is made (Figure 8).
4. For safety, depending on the condition of the surface being prepared, the individual tooling segments should be attached to the magnetic tooling holders using a single mounting screw for each segment.

**Note:** Use blanks in unused magnetic tooling pockets.

### Attaching The Velcro Plate Adapter

The Velcro plate adapter attaches magnetically to the Magnetic tooling plate and snaps into place (Figure 9).

### Mounting Brazed Diamond and Polishing Pads

The brazed diamond and polishing pads are attached to the Velcro adapter plates (Figures 10; 11).

### Mounting PCD's

PCD's are mounted to the holder (Figure 12) with tooling screws. The holder and PCD's are not magnetic, but are attached to the magnetic plates.

**Note:** When setting the machine down into the operating position, hold the machine firmly and set it down gently.



**CAUTION:** DAMAGE TO ACCESSORIES AND MACHINE COULD OCCUR IF DROPPED.



**WARNING:** WHEN ACCESSORIES ARE EXPOSED, NEVER OPERATE MACHINE. SERIOUS INJURY AND POSSIBLE PLATE DISENGAGEMENT COULD OCCUR.

# Troubleshooting Guide

Fault Code Status Light	Fault Description	Problem	Solution
SOLID ON	Check safety tether	Safety tether is disconnected from controller or faulty connection internally with tether switch.	Attach safety tether to control box. If necessary, check connections inside controller. Ensure control box is disconnected from power source prior to opening control box.
2 FLASHES	Power line voltage too low	Not enough power coming into controller to start or run grinder.	Be sure to use the appropriate extension cord (see Safety) and/or generator (10 kW, 115V if applicable).
3 FLASHES	Power line voltage too high	Excessive power coming into controller.	Ensure grinder is plugged into an outlet and/or generator (if applicable) with the appropriate voltage.
4 FLASHES	Motor short circuit or overload	Motor may be overheating due to using too long of an extension cord or because the outlet/generator is the wrong voltage.	Allow motor to cool before resetting fault code. Reduce amp draw by removing weights from grinder deck and/or reducing motor's RPM. Ensure use of proper extension cord, outlet, and/or generator.
5 FLASHES	Controller overheating	Internal components of controller are too hot.	Ensure external fan is plugged into controller and is working properly. Reduce amp draw by removing weights from grinder deck and/or reducing motor's RPM.
6 FLASHES	Open motor phases	No power from controller motor.	Ensure motor is properly connected to control box.
NO FLASHING LIGHTS or ANY LIGHTS AT ALL	No illuminated status lights or fault codes	Reset power supply circuit breaker if necessary; if the power source is working, it is likely the fuse inside the control box is blown.	Prior to opening control box, ensure it is disconnected from power source. Wait 30 seconds for power to discharge from capacitors after disconnecting. Replace fuse.

**Note:** For additional maintenance and repair information, reference this machine's Service Manual.



# Warranty

---

National Flooring Equipment Inc. (referred to as "the Company") warrants that each new unit manufactured by The Company, to be free from defects in material and workmanship in normal use and service for a period of twelve (12) months from date of shipment from the Company. For administrative ease, will honor warranty for a period of fifteen (15) months from date of shipment from the company. Accessories or equipment furnished and installed on the product by the Company but manufactured by others, including but not limited to: engines, motors, electrical components, transmissions etc., shall carry the accessory manufacturers own warranty. Battery warranties are prorated over the warranty period. Customer is responsible for the inspection of equipment / parts upon delivery. Freight damages reported beyond authorized time frame will not be honored.

The Company, at its determination of defect, will repair or replace any product or part deemed to be defective in material or workmanship within specified warranty time period. All product determinations and / or repairs will take place at the designated Company repair facility, or at a certified warranty location designated by the Company. The Company will coordinate and be responsible for all freight expenses associated with valid warranty claims. Freight and shipping expenses associated with abuse or misuse will be back charged to the Distributor/Customer. The Company reserves the right to modify, alter or improve any part / parts without incurring any obligation to replace any part / parts previously sold without such modified, altered or improved part / parts. In no event shall the seller or manufacturer of the product be liable for special, incidental, or consequential damages, including loss of profits, whether or not caused by or resulting from the negligence of seller and / or the manufacturer of the product unless specifically provided herein. This warranty shall not apply to any products or portions there of which have been subjected to abuse, misuse, improper installation or operation, lack of recommended maintenance, electrical failure or abnormal conditions and to products which have been tampered with, altered, modified, repaired, reworked by anyone not approved or authorized by the Company or used in any manner inconsistent with the provisions of the above or any instructions or specifications provided with or for the product. Any and all unauthorized onsite warranty work conducted by unauthorized personnel or any outside person(s), is not covered by the Company unless the work has been pre-authorized by a predetermined manufacturer representative. This excludes wearable parts and/or consumables.

Defective or failed material or equipment shall be held at the purchaser's premises until authorization has been granted by the Company to return or dispose of defective products. Products returned for final inspection must be returned with a manufacturer authorized Return Material Authorization (RMA). Any unauthorized return of equipment will be declined at the dock by the Company. Any non-approved items returned with approved returned items are subject to rejection and will not be credited. Credit will be issued for material found to be defective upon the Company's inspection based on prices at time of purchase.

**TO OBTAIN SERVICE CONTACT NATIONAL FLOORING EQUIPMENT, INC. TOLL FREE AT 800-245-0267 FOR A REPAIR AUTHORIZATION NUMBER. COD FREIGHT RETURNS WILL NOT BE ACCEPTED. FREIGHT COLLECT SHIPMENTS WILL NOT BE ACCEPTED. WARRANTY REPAIRS MUST BE ACCOMPANIED BY DATE OF PURCHASE RECEIPT AND A RETURN/REPAIR AUTHORIZATION NUMBER.**

**RETURN/REPAIR AUTHORIZATION NUMBER:** \_\_\_\_\_

**MACHINE SERIAL NUMBER:** \_\_\_\_\_



Made in America Since 1968

9250 Xylon Avenue N • Minneapolis, MN 55445 • U.S.A.  
Toll-free 800-245-0267 • Phone 763-315-5300 • Fax 800-648-7124 • Fax 763-535-8255  
Web Site: [www.nationalequipment.com](http://www.nationalequipment.com) • E-Mail: [info@nationalequipment.com](mailto:info@nationalequipment.com)