

RUST-OLEUM

CORPORATION

11 Hawthorn Pkwy., Vernon Hills, IL 60061

800-466-7126 rustoleum.com/mean-green

Made in USA | Hecho en E.U.A.

©2020 Rust-Oleum Corporation 0320

73157 MG SS WIPES

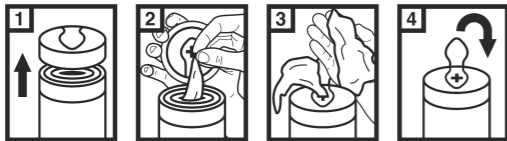


7 20547 73157 0



PLEASE RECYCLE

MEAN GREEN® SUPER STRENGTH HEAVY DUTY WIPES TOUGHNESS YOU CAN TRUST™



BEFORE FIRST USE:

1. Remove lid by lifting upwards and remove foil seal.
2. Pull towel from center of roll and thread through the opening on the underside of lid.
3. Replace the lid on the container and pull wipe through the opening.
4. After each use, snap the hinged cap back into place to ensure that the towels stay moist.

DIRECTIONS: Use textured side to scrub hands or surfaces. No need to rinse or dry hands. Discard wipe after use. **NOTE:** Not for use on leather, suede, or electronic screens. Super Strength Heavy Duty Wipes are safe for nearly all surfaces. However, it is recommended to test in a small inconspicuous area before normal use.

DISPOSAL: Recycle empty container. If recycling is not available, discard container in trash. Do not flush wipes. For additional information see the Safety Data Sheet at rustoleum.com/mean-green

CONTAINS: Water (7732-18-5), Butyl 3-oxybutanoate (53605-94-0), Biodegradable Surfactant Blend (Proprietary), Glycerol (56-81-5), Fragrance (Mixture), D-Limonene (5989-27-5).

KEEP OUT OF REACH OF CHILDREN

SATISFACTION GUARANTEED: If you are dissatisfied with this product, contact Rust-Oleum Product Support at 800-466-7126 for product replacement or a full refund of the purchase price. Refer to product number and batch code.

For more ingredient information please visit: rustoleum.com/mean-green



SUPER STRENGTH HEAVY DUTY WIPES

DISSOLVES TOUGH GREASE & GRIME

SURFACE & SKIN SAFE



80 LARGE WIPES 10 IN x 6 IN (25.4 cm x 15.24 cm)

DISSOLVES GREASY STICKY MESSSES!

GREASE • OIL • ADHESIVES • TAR • WAX
DIRT & GRIME • SOAP SCUM • DRIED PAINT



TOUGH ON GREASE AND GRIME
Mean Green Super Strength Heavy Duty Wipes dissolve and remove the toughest greasy and sticky messes. Use for cleaning all types of messes including grease, dirt, grime, oil, adhesives, tar, wax, ink, even dried paint.

GENTLE ON HANDS AND SURFACES
Tough on grime, yet gentle on your skin. The Super Strength Heavy Duty Wipes contain an extra moisturizing ingredient and won't crack or dry your hands. No need to rinse!

SUPER STRENGTH CLEANING & DEGREASING



KITCHEN

Greasy Stoves
Range Hoods
Refrigerators
Sinks



PATIO

Grills
Furniture
Garden Equipment
Coolers



RECREATION

RV's
ATV's
Boats
Camping Gear
Sports Equipment



BATHROOM

Soap Scum
Garbage Cans
Tub & Tile
Shower Stalls



GARAGE

Auto Parts
Tires
Lawn Equipment
Sports Gear



PROJECTS

Paint
Adhesive
Tools
Workshop