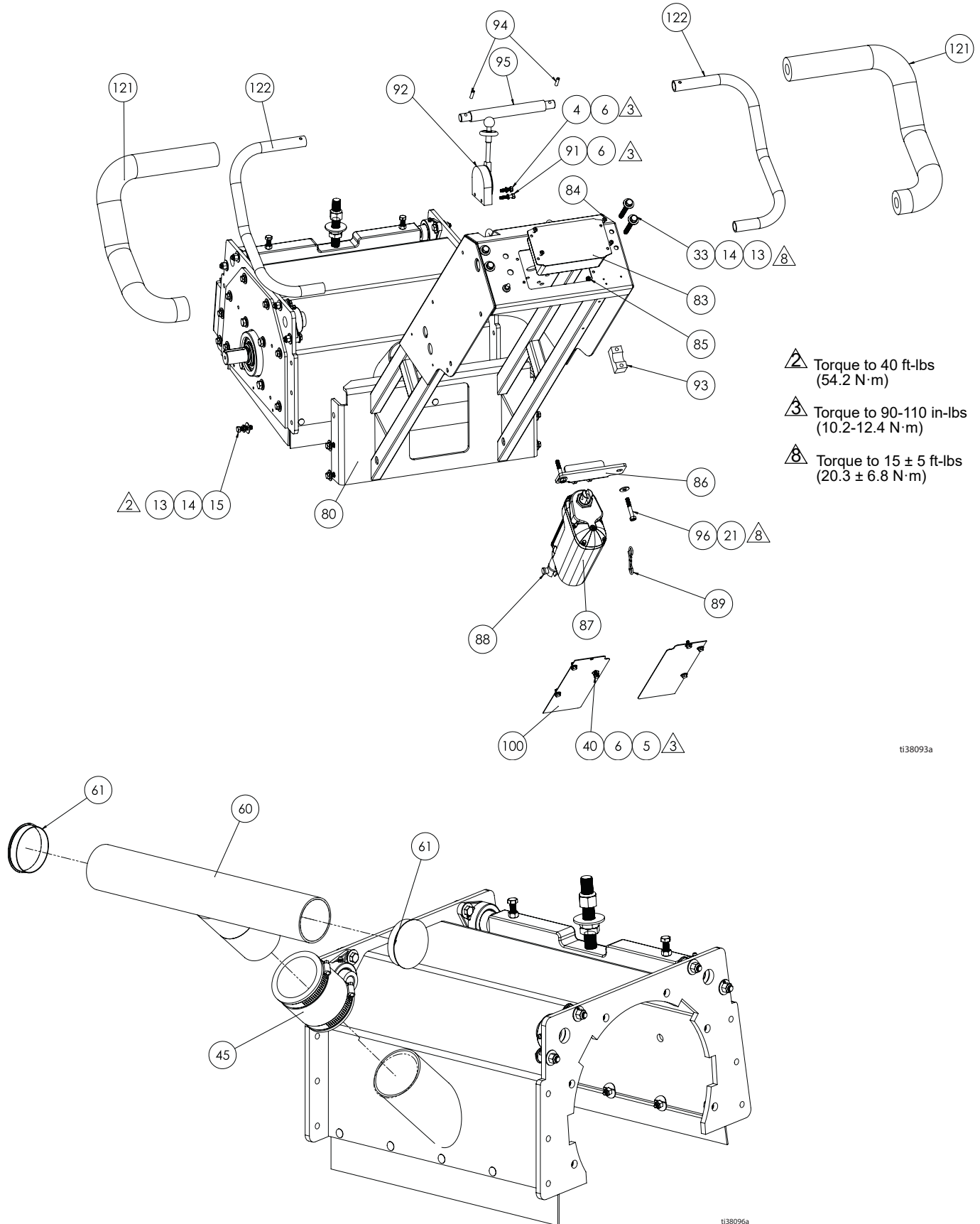


# Parts - Guidebar / Vacuum Assemblies (All Models)



t138093a

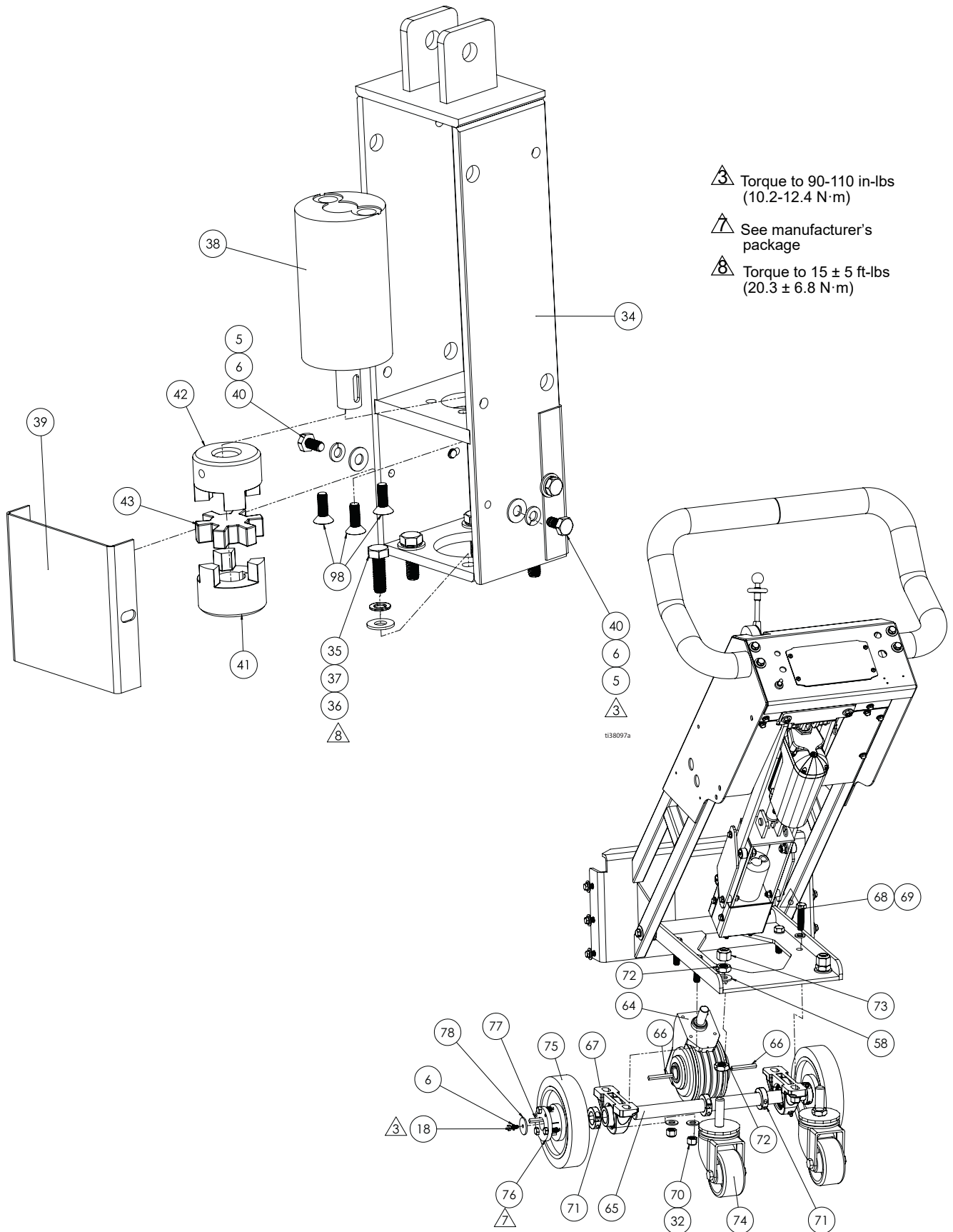
t138096a

**Parts List - Guidebar / Vacuum Hose Assemblies (All Models)**

Ref	Part	Description	Qty	Ref	Part	Description	Qty
4	HX-CS.25-20X1	SCREW, hex, cap, 1/4"-20 x 1"	1	86	17Y111	LINKAGE, upper	1
5	HX-CS.25-20X1	WASHER, flat, 1/4"	6	87	18B178	ACTUATOR, 80mm	1
6	SLW.25	WASHER, lock, 1/4"	6	88	18A114	PIN	1
13	FLW.375	WASHER, flat, 3/8"	5	89	17Y962	PIN, cotter, bow tie	1
14	SLW.375	WASHER, lock, 3/8"	5	91	HX-CS.25-20X1.25	SCREW, hex, 1/4"-20 x 1.25"	1
15	HX-CS.375-16x1.25	BOLT, hex, 3/8"-16 x 1.25"	3	92	18B353	LEVER, transmission	1
21	FLW.312	WASHER, flat, 5/16"	1	93	18B372	MOUNT, handlebar, saddle	2
33	HX-CS.375-16X3.FT	SCREW, hex, cap, 3/8-16 x 3"	2	94	18B462	PIN, roll, 1/4"	2
40	HX-CS.25-20X.5	SCREW, hex, cap, 1/4"-20 x .5"	6	95	18B455	HANDLE, extension	1
45	18B362	COUPLER, vacuum, 3"	1	96	HX-CS312-24X2	SCREW, hex, 5/16"-24 x 2'	2
60	18B361	TEE, vacuum	1	100	19B229	GUARD, wire, rear	2
61	17W220	PLUG, tube, cap	2	121	18B435	FOAM, handlebar	2
80	18B219	GUIDEBAR	1	122	18B454	HANDLEBAR	2
83	19B224	BOARD, control	1	136▲	15F744	LABEL, warning, ISO pinch hazard	4
84	116610	SCREW, Phillips, 10-32" x .5"	4				
85	NHN10-32	NUT, nylock, 10-32"	1				

▲Replacement warning, safety labels, tags, and cards are available at no cost.


# Parts - Hydraulic Motor / Rear Assembly (All Models)




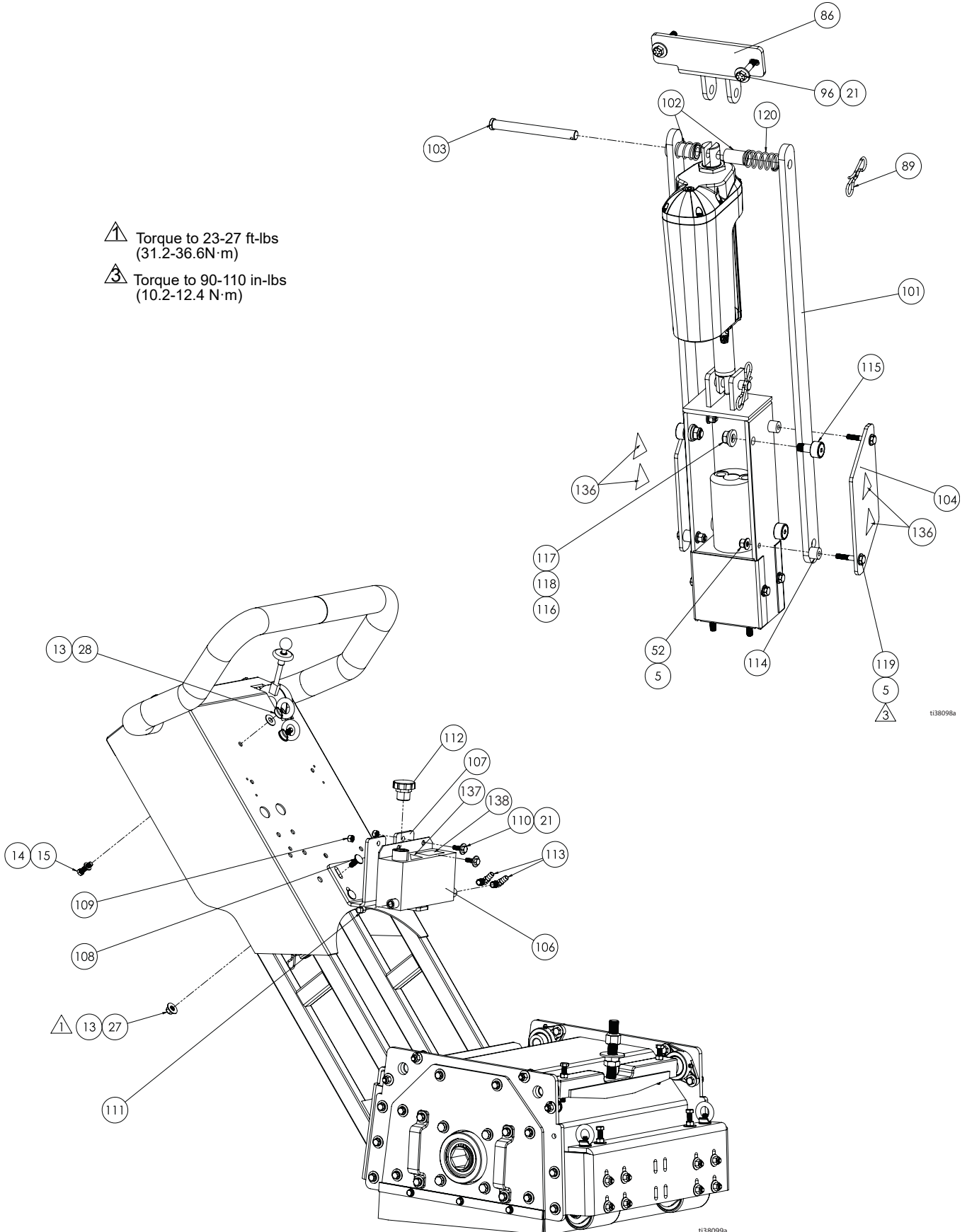
## Parts List - Hydraulic Motor / Rear Assembly (All Models)

Ref Part	Description	Qty	Ref Part	Description	Qty
5	HX-CS.25-20X1	2	67	18B373	2
6	SLW.25	3		BEARING, drive wheel, flanged	2
18	HX-CS.25-20X.75	1	68	HX-CS.50-13X2	4
				SCREW, hex, cap, 1/2"-13 x 2"	4
32	FLW.50	2	69	FLW.M12	4
34	18B220	1		WASHER, flat, M12	4
35	HX-CS.M8-1.25X25mm	2	70	NHN.50-13	2
36	HX-CS.M8-1.25X25mm	2		NUT, nylock, 1/2"-13	2
37	SLW.M8	2	71	18B464	2
38	19B303	1		COLLAR, split, 1.125"	2
39	18B221	1	72	JHN.75-10	4
40	HX-CS.25-20X.5	2		NUT, jam, hex, 3/4"-10	4
41	18B425	1	73	NHN.75-10	2
42	18B426	1		NUT, nylock, 3/4"-10	2
43	18B427	1	74	18B476	2
58	FLW.75	2		CASTER, swivel	2
64	18B398	1	75	18B477	2
65	18B469	1		WHEEL	2
66	17W088	2	76	18B478	2
				BUSHING, drive, wheel (includes screws)	2
			77	18B340	2
				KEY, 1/4" x 1.875"	2
			78	JFNW.25-1.5X.112	2
				WASHER, jumbo, 1/4-1.5 x .112"	2
			98	FHSCS.25-28X.75	3
			**	18B446	2
				HOSE, HYD. high pressure (gas/propane)	2
			**	19B303	2
				HOSE, HYD. high pressure (electric)	2
			**	<i>not shown</i>	

# Parts - Support System / Hydraulic Tank (All Models)

 Torque to 23-27 ft-lbs  
(31.2-36.6N·m)

 Torque to 90-110 in-lbs  
(10.2-12.4 N·m)



t138098a

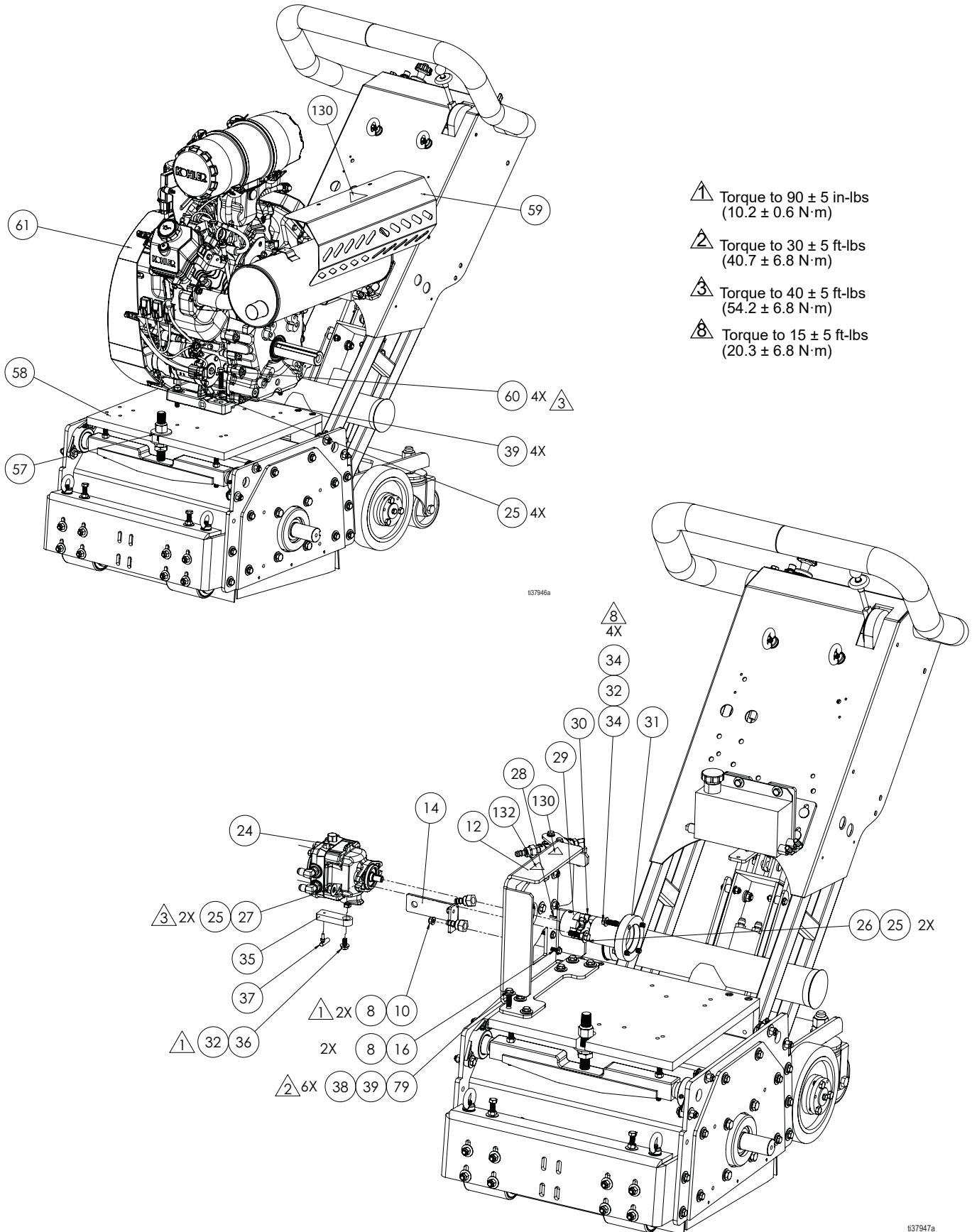
t138099a

## Parts List - Support System / Hydraulic Tank (All Models)

Ref	Part	Description	Qty	Ref	Part	Description	Qty
5	HX-CS.25-20X1	WASHER, flat, 1/4"	4	108	CB.375-16X1	BOLT, 3/8"-16 x 1"	4
13	FLW.375	WASHER, flat, 3/8"	2	109	NHN.312-18	NUT, nylock, 5/16"-18	2
14	SLW.375	WASHER, lock, 3/8"	1	110	HX-CS.312-18X1	SCREW, hex, 5/16"-18 x 1"	2
15	HX-CS.375-16x1.25	BOLT, hex, 3/8"-16 x 1.25"	1	111	100509	PLUG, hydraulic, tank	1
21	FLW.312	WASHER, flat, 5/16"	2	112	15H525	CAP, screw, hydraulic, tank	1
27	NHN.375-16	NUT, nylock, 3/8"-16	1	113	19B222	FITTING, 90°	2
28	18B117	NUT, eye, 3/8-16	1	114	19B328	SPACER, support, plate	4
52	NHN.25-20	NUT, nylock, 1/4"-20	4	115	19B327	ROLLER, cam	4
86	17Y111	LINKAGE, upper	1	116	FLW.437	WASHER, 7/16"	4
89	17Y962	PIN, cotter, bow tie	1	117	19B329	NUT, nylock, 7/16"	4
96	HX-CS312-24X2	SCREW, hex, 5/16"-24 x 2"	2	118	SLW.437	WASHER, lock, 7/16"	4
101	19B251	BAR, support	2	119	HX-CS.25-20X1.5	SCREW, hex, 1/4-20 x 1.5	4
102	19B255	SPACER, pin	2	120	19B271	SPRING, support	2
103	19B263	PIN	1	136▲	15F744	LABEL, warning, ISO, pinch	4
104	19B262	PLATE, support	2	137▲	15K616	LABEL, caution	1
106	121233	TANK, hydraulic, fluid	1	138	198921	LABEL, instruction	1
107	18B996	BRACKET, hydraulic, tank	1				

▲Replacement warning, safety labels, tags, and cards are available at no cost.

# Parts - Motor / Hydraulic Assemblies (Gas)




## Parts List - Motor / Hydraulic Assemblies (Gas)


Ref	Part	Description	Qty	Ref	Part	Description	Qty
8	HX-CS.25-20X1	WASHER, flat, 1/4"	4	36	HX-CS.M8-1.25X16mm	SCREW, hex, cap, 1.25 x 16mm	1
10	NHN.25-20	NUT, nylock, 1/4-20	2	37	18B423	BALL, joint	1
12	19B308	MOUNT, hydro-gear pump	1	38	FLW.375	WASHER, flat, 3/8"	6
14	19B309	MOUNT, shifter cable	1	39	SLW.375	WASHER, lock, 3/8"	14
16	HX-CS.25-20X1	SCREW, hex, cap, 1/4"-20 x 1"	2	57	FLW.75-2.0	WASHER, fender, 3/4"	1
24	19B304	PUMP, hydraulic	1	58	19B496	PLATE, motor	1
25	FLW.375G9	WASHER, flat, 3/8"	8	59	18B356	SHIELD, heat	1
26	HX-CS.375-16X1.5	SCREW, hex, cap, 3/8-16 x 1.5	2	60	HX-CS.375-16X1.75	SCREW, hex, cap, 3/8-16 x 1.75"	4
27	NHN.375-16	NUT, nylock, 3/8-16	2	61	18B438	MOTOR, Kohler, 38HP	1
28	19B334	KEY, 1/8" SQ x 0.5"	1	79	HX-CS.375-16x1.25	BOLT, hex, 3/8"-16 x 1.25"	1
29	19B333	COUPLER, Lovejoy, 1/2"	1	130▲	16D646	LABEL, warning, hot surface	2
30	18B451	SPIDER	1	132▲	16C394	LABEL, warning, entanglement	1
31	19B307	COUPLER, hydrostatic pump	1				
32	HX-CS.M8-1.25X25mm	WASHER, flat, M8	5				
34	HX-CS.M8-1.25X30mm	SCREW, hex, cap, 1.25 x 30mm	4				
35	18B368	ARM, pump control	1				


▲Replacement safety labels, tags, and cards are available at no cost.

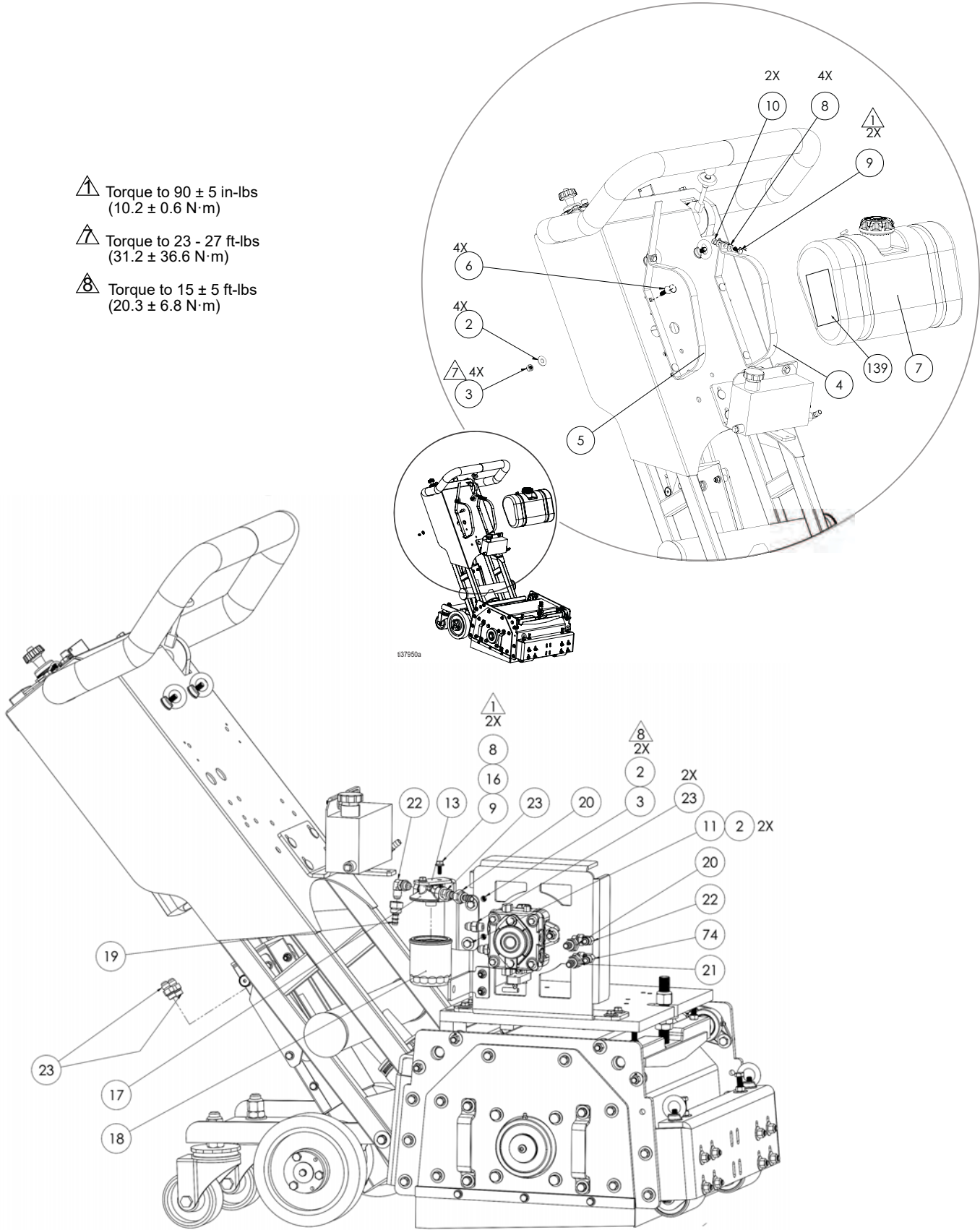


# Parts - Hydraulic Fittings / Fuel Tank Assemblies (Gas)

 Torque to 90 ± 5 in-lbs  
(10.2 ± 0.6 N·m)

 Torque to 23 - 27 ft-lbs  
(31.2 ± 36.6 N·m)

 Torque to 15 ± 5 ft-lbs  
(20.3 ± 6.8 N·m)



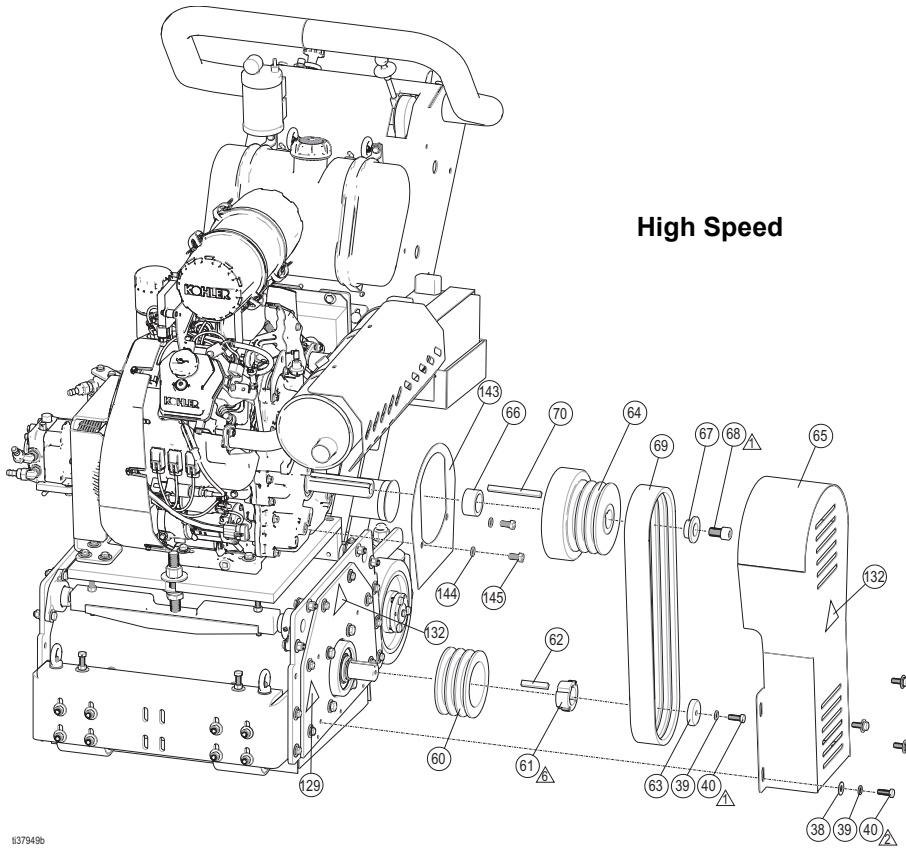
137950a

137948a




## Parts List - Hydraulic Fittings / Fuel Tank Assemblies (Gas)

Ref	Part	Description	Qty	Ref	Part	Description	Qty
2	FLW.312	WASHER, flat, 5/16"	8	17	116828	HEAD, filter, spin-on	1
3	NHN.312-18	NUT, nylock, 5/16-18	6	18	116830	FILTER, oil	1
4	18B366	BRACKET, gas tank, short	1	19	18B300	HOSE, hydraulic, 20"	1
5	18B365	BRACKET, gas tank, long	1	20	18B301	HOSE, hydraulic, 20"	1
6	CB.312-18X1	BOLT, carriage, 5/16-18 x 1	4	21	18B299	HOSE, hydraulic, 25"	1
7	19B340	TANK, gas	1	22	18B444	FITTING, adapter, 90°	2
8	HX-CS.25-20X1	WASHER, flat, 1/4"	6	23	18B443	FITTING, adapter	4
9	HX-CS.25-20X.75	SCREW, hex, cap, 1/4-20 x 0.75	4	74	19B332	FITTING, hydraulic, 90°	1
10	NHN.25-20	NUT, nylock, 1/4-20	4	130▲	16D646	LABEL, warning, hot surface	1
11	HX-CS.312-18X1	SCREW, hex, cap, 5/16-18 x 1	2	139▲	19Y703	LABEL, warning, multiple	1
13	18B378	MOUNT, hydraulic filter	1	▲Replacement safety labels, tags, and cards are available at no cost.			
16	SLW.25	WASHER, lock, 1/4"	2				

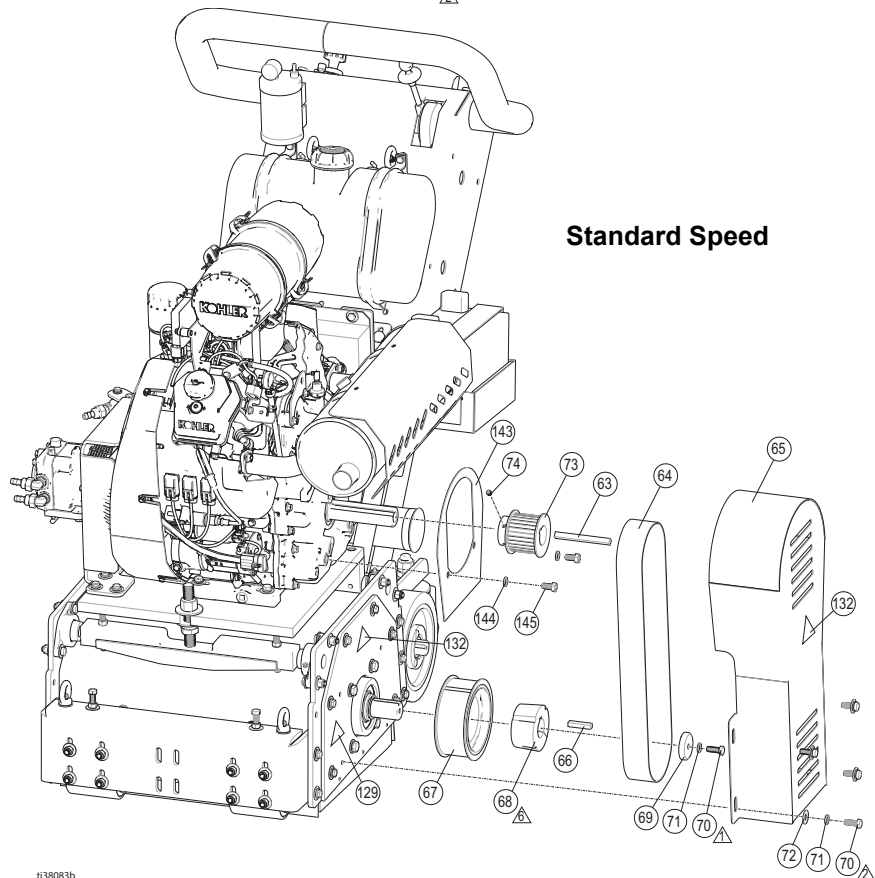
# Parts - Pulley Assemblies (Gas)



**High Speed**

-  Torque to  $90 \pm 5$  in-lbs  
( $10.2 \pm 0.6$  N·m)
-  Torque to  $30 \pm 5$  ft-lbs  
( $40.7 \pm 6.8$  N·m)
-  See manufacturer's package

837949b



**Standard Speed**

838083b

## Parts List - Pulley Assemblies (Gas)

### High Speed (Model 25P477)

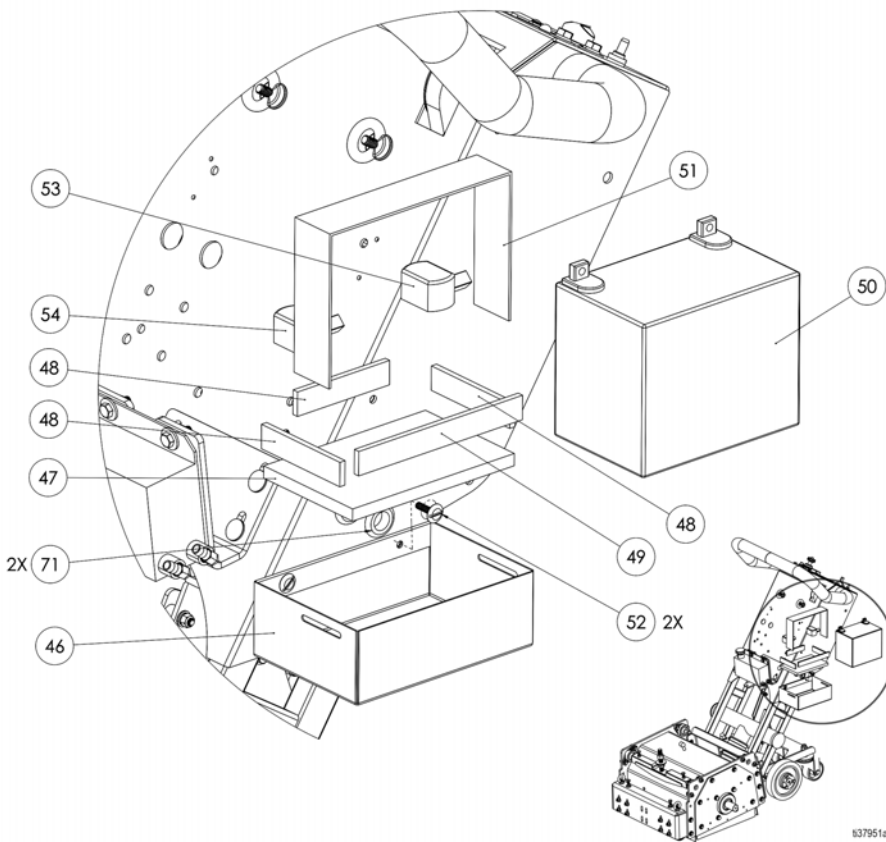
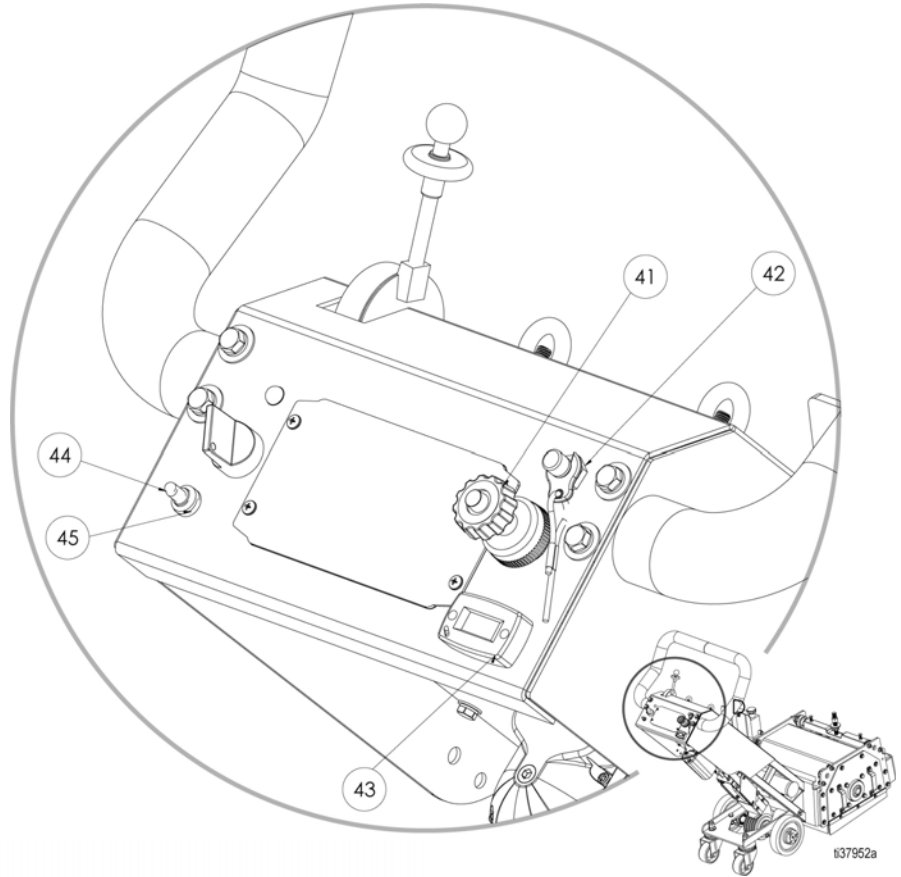
Ref	Part	Description	Qty	Ref	Part	Description	Qty
38	FLW.375	WASHER, flat, 3/8"	4	68	18A501	SCREW, socket head cap, 5/8-18 x 1"	1
39	SLW.375	WASHER, lock, 3/8"	5	69	19C103	BELT	1
40	HX-CS.375-16X1	SCREW, hex, cap, 3/8-16 x 1"	5	70	19B435	KEY, 3/8" x 3.5"	1
60	19C102	PULLEY, v-belt	1	129▲	16C393	LABEL, warning, foot cut	1
61	18B180	BUSHING, tapered, 35mm	1	132▲	16C394	LABEL, warning, entangle- ment	2
62	18B363	KEY, 8mm x 10mm x 1.75"	1	143	19C108	GUARD	1
63	18B460	PULLEY, bottom, stop	1	144	SLW.437	WASHER, lock	2
64	19B999	CLUTCH, centrifugal	1	145	19C114	SCREW, button, 7/16-14 x .75"	2
65	18A503	GUARD, belt	1	38	100023	WASHER, flat, 3/8"	4
66	18A505	SPACER, clutch	1				
67	18A500	WASHER, clutch	1				

### Standard Speed (Model 25R104)

Ref	Part	Description	Qty	Ref	Part	Description	Qty
63	18B480	KEY, 3/8" x 4.25"	1	73	19B499	PULLEY, 28 tooth	1
64	18B344	BELT	1	74	18B524	SCREW, set	2
65	18A503	GUARD, belt	1	129▲	16C393	LABEL, warning, foot cut	1
66	18B363	KEY, 8mm x 10mm x 1.75"	1	132▲	16C394	LABEL, warning, entangle- ment	2
67	18B590	PULLEY, 56 tooth	1	143	19C108	GUARD	1
68	19B422	BUSHING, taper, lock, 35mm	1	144	SLW.437	WASHER, lock	2
69	18B460	PULLEY, bottom, stop	1	145	19C114	SCREW, button, 7/16-14 x .75"	2
70	HX-CS.375-16X1	SCREW, hex, cap, 3/8-16 x 1"	5				
71	SLW.375	WASHER, lock, 3/8"	5				
72	FLW.375	WASHER, flat, 3/8"	4				

▲Replacement safety labels, tags, and cards are available at no cost.

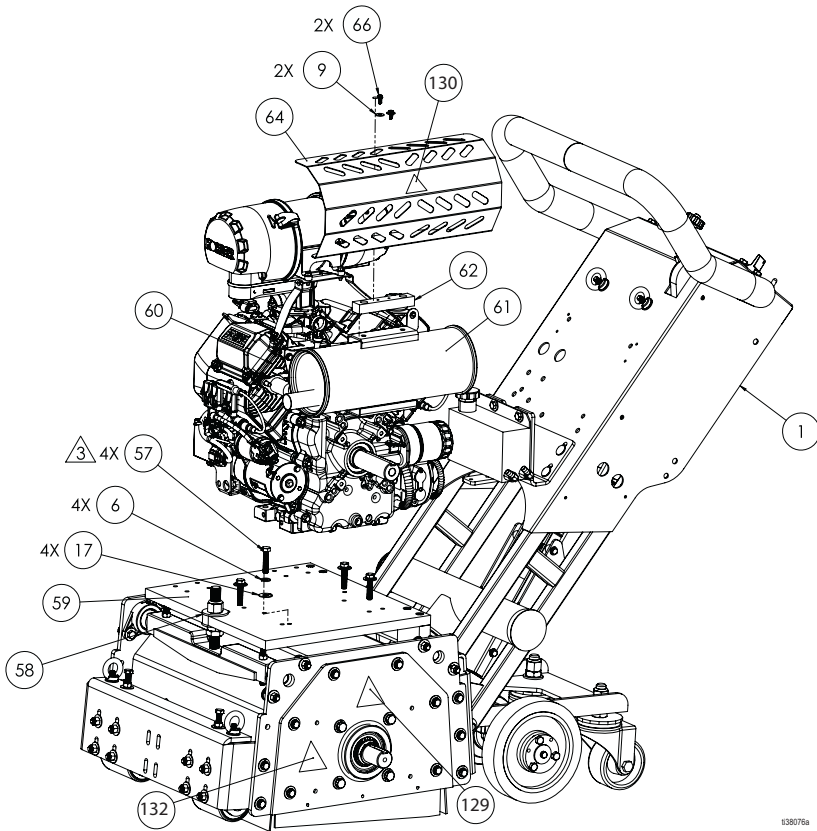
# Parts - Dashboard / Battery Assemblies (Gas)



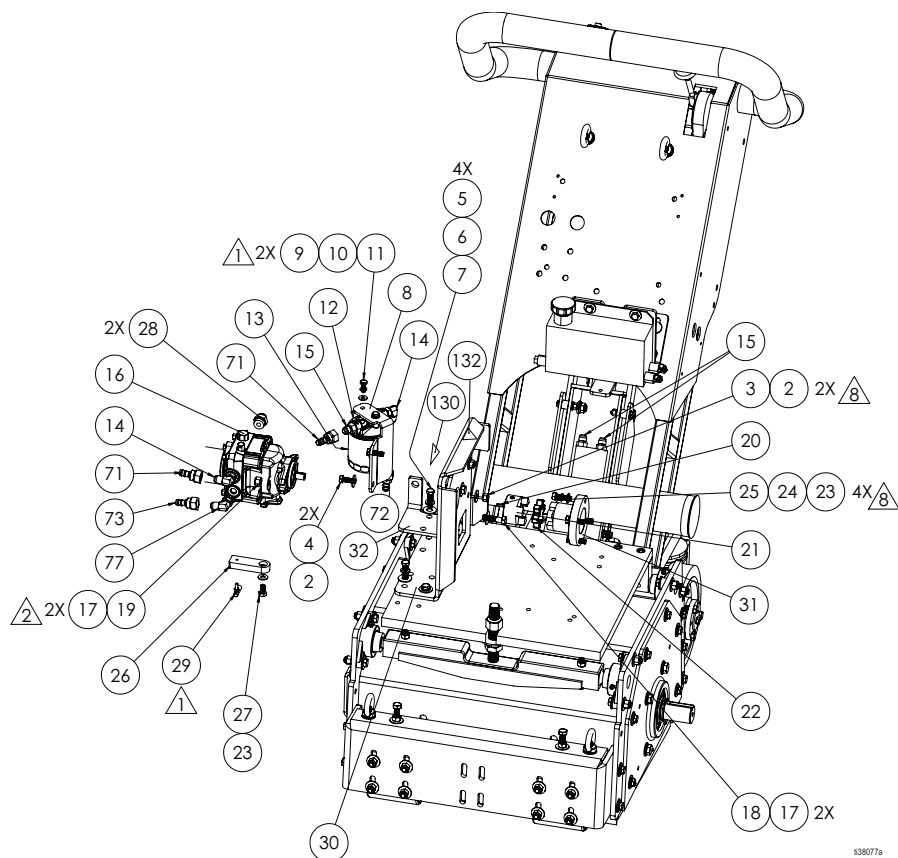
## Parts List - Dashboard / Battery Assemblies (Gas)

Ref	Part	Description	Qty	Ref	Part	Description	Qty
41	18B394	CABLE, vernier, control	1	49	18Y705	FOAM, urethane, 1/4"	1
42	17W073	SWITCH, kill	1	50	B-SLADC12-35J	BATTERY, 35 AH agm	1
43	17W294	TACHOMETER	1	51	18A786	STRAP, Velcro, 2" x 24"	1
44	17Z193	SWITCH, power, assembly	1	52	LPMS.25-20X1.0	SCREW, low profile, 1/4-20 x 1"	2
45	17Z340	BOOT, toggle	1	53	801958	TERMINAL, battery, protector, red	1
46	17Y121	BOX, battery	1	54	801959	TERMINAL, battery, protector, black	1
47	18Y704	FOAM, urethane, 1/2"	1	71	18B851	GROMMET, 1 1/16" OD, 3/4" ID	2
48	18Y701	FOAM, urethane, 1/4"	3				

# Parts - Motor / Hydraulic Assemblies (Propane)



- Torque to 90 ± 5 in-lbs (10.2 ± 0.6 N·m)
- Torque to 30 ± 5 ft-lbs (40.7 ± 6.8 N·m)
- Torque to 40 ± 5 ft-lbs (54.2 ± 6.8 N·m)
- Torque to 15 ± 5 ft-lbs (20.3 ± 6.8 N·m)



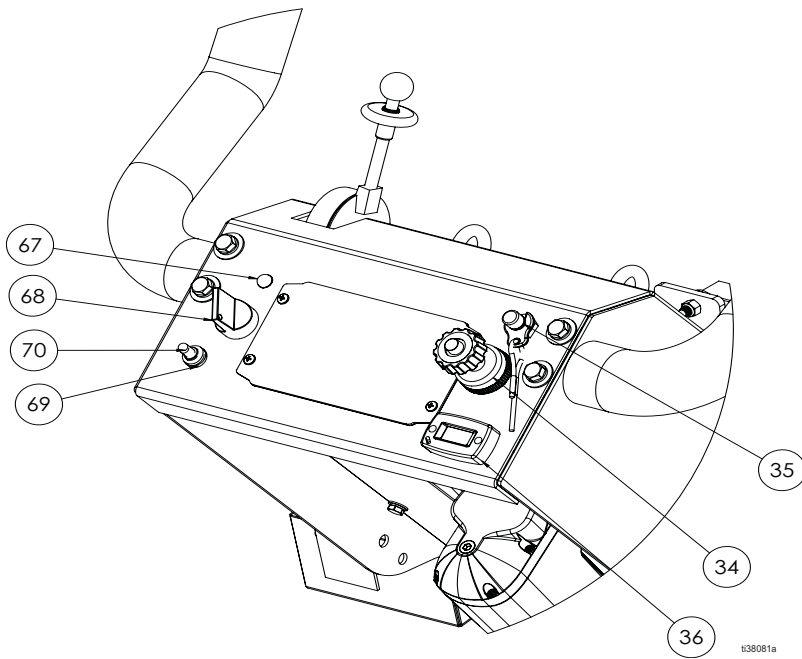
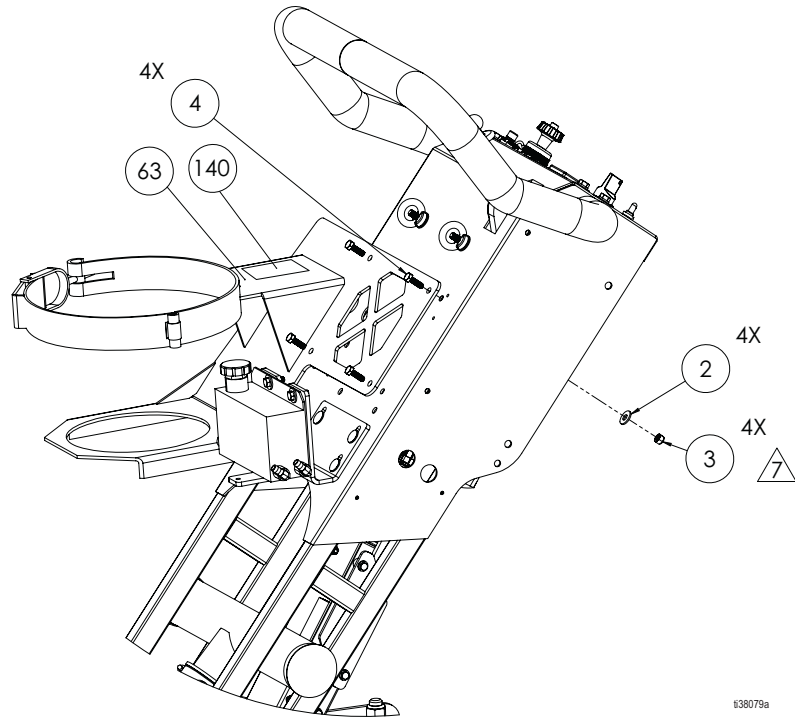
## Parts List - Motor / Hydraulic Assemblies (Propane)

Ref	Part	Description	Qty	Ref	Part	Description	Qty
2	FLW.312	WASHER, flat, 5/16"	4	26	18B368	ARM, pump control	1
3	NHN.312-18	NUT, nylock, 5/16-18	2	27	HX-CS.M8-1.25X1 6mm	SCREW, hex, cap, 1.25 x 16mm	1
4	HX-CS.312-18X1	SCREW, hex, cap, 5/16-18 x 1	2	28	18B445	FITTING, adapter	2
5	FLW.375	WASHER, flat, 3/8"	4	29	18B423	BALL, joint	1
6	SLW.375	WASHER, lock, 3/8"	8	30	19B314	MOUNT, hydro-gear pump	1
7	HX-CS.375-16x1.25	BOLT, hex, head, 3/8-16 x 1.25"	4	31	19B313	COUPLER, hydrostatic pump	1
8	18B378	MOUNT, hydraulic filter	1	32	19B315	SHIFTER, hydro gear support	1
9	HX-CS.25-20X1	WASHER, flat, 1/4"	4	57	HX-CS.375-16X1. 75	SCREW, hex, cap, 3/8-16 x 1.75"	4
10	SLW.25	WASHER, lock, 1/4"	2	58	FLW.75-2.0	WASHER, fender, 3/4"	1
11	HX-CS.25-20X.75	SCREW, hex, cap, 1/4-20 x .75	2	59	19B496	PLATE, motor	1
12	116828	HEAD, filter, spin on	1	60	18B439	MOTOR, Kohler, 25HP	1
13	116830	FILTER, oil	1	61	18B431	KIT, muffler	1
14	18B444	FITTING, adapter, 90°	2	62	18B384	BLOCK, mount, heat shield	1
15	18B443	FITTING, adapter	3	64	18B357	SHIELD, heat	1
16	19B304	PUMP, hydraulic	1	66	FHX-CS10-32X.50	SCREW, self tapping, 10-32 x .5"	2
17	FLW.375G9	WASHER, flat 3/8"	8	71	18B312	HOSE, hydraulic, 15"	2
18	HX-CS.375-16X1.5	SCREW, hex, cap, 3/8-16 x 1.5	2	72	18B313	HOSE, hydraulic, 16"	1
19	NHN.375-16	NUT, nylock, 3/8-16	2	73	18B742	HOSE, hydraulic, 20"	1
20	19B334	KEY, 1/8" SQ x 0.5"	1	77	19B332	FITTING, hydraulic, 90°	1
21	19B333	COUPLER, Lovejoy, 1/2"	1	129▲	16C393	LABEL, warning, foot cut	1
22	18B451	SPIDER	1	130▲	16D646	LABEL, warning, hot surface	2
23	HX-CS.M8-1.25X2 5mm	WASHER, flat, M8	5	132▲	16C394	LABEL, warning, entanglement	2
24	SLW.M8	WASHER, lock, M8	4	▲Replacement safety labels, tags, and cards are available at no cost.			
25	HX-CS.M8-1.25X3 0mm	SCREW, hex, cap, 1.25 x 30mm	4				



# Parts - Propane Tank / Dashboard Assemblies (Propane)

⚠ Torque to 23 - 27 ft-lbs  
(31.2 ± 36.6 N·m)

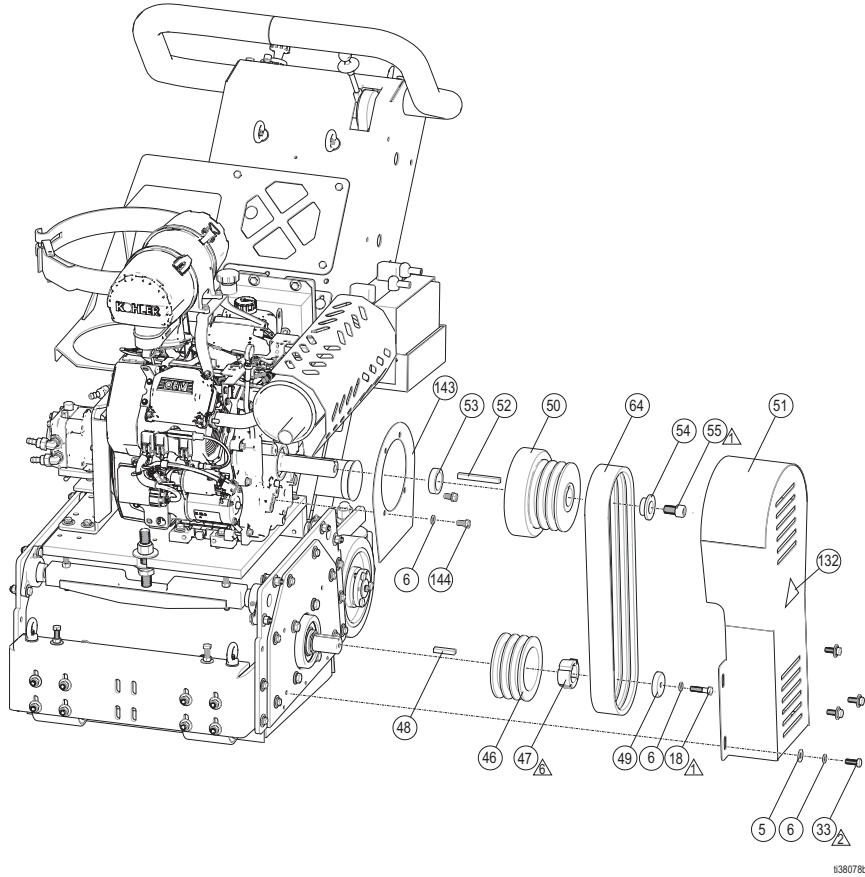


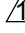


**Parts List - Propane Tank / Dashboard Assemblies (Propane)**

Ref	Part	Description	Qty	Ref	Part	Description	Qty
2	FLW.312	WASHER, flat, 5/16"	4	67	18B434	LAMP, oil	1
3	NHN.312-18	NUT, nylock, 5/16-18	4	68	18B120	SWITCH, key	1
4	HX-CS.312-18X1	SCREW, hex, cap, 5/16-18 x 1	4	69	17Z193	SWITCH, power, assembly	1
34	18B396	CABLE, vernier, control	1	70	17Z340	TOGGLE, boot	1
35	17W073	SWITCH, kill	1	140▲	19B539	LABEL, warning, fire and explosion	1
36	17W294	TACHOMETER	1				
63	18B379	BRACKET, propane, tank	1				

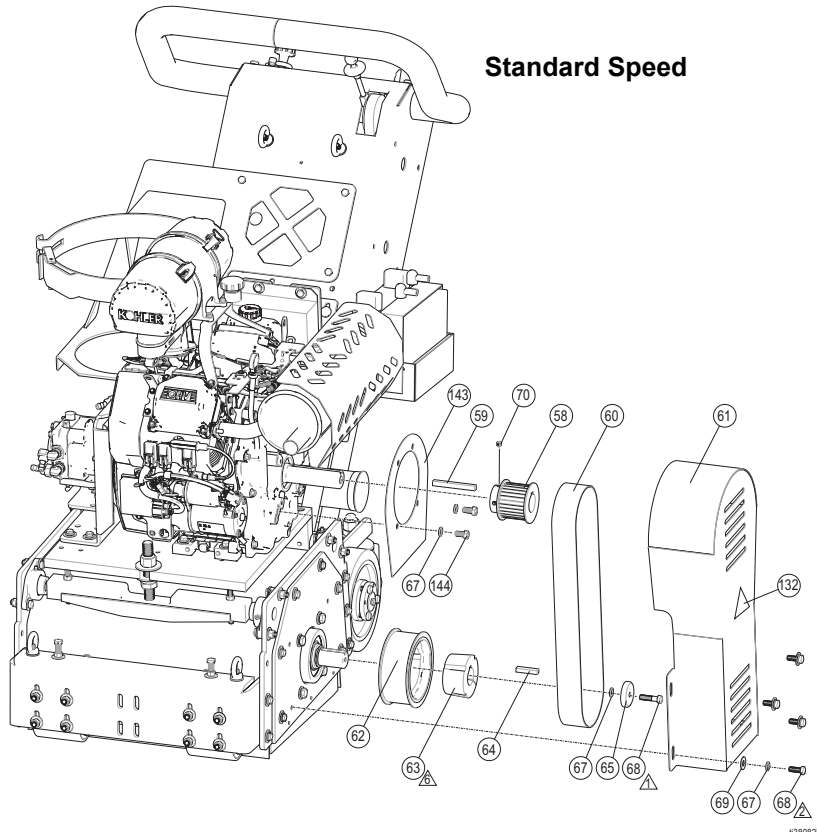
▲Replacement safety labels, tags, and cards are available at no cost.

# Parts - Pulley Assemblies (Propane)



-  Torque to 90 ± 5 in-lbs (10.2 ± 0.6 N·m)
-  Torque to 30 ± 5 ft-lbs (40.7 ± 6.8 N·m)
-  See manufacturer's package

## Standard Speed



## Parts List - Pulley Assemblies (Propane)

### High-Speed (Model 25P478)

Ref.	Part	Description	Qty	Ref.	Part	Description	Qty
5	FLW.375	WASHER, flat, 3/8"	4	53	18A504	SPACER, clutch	1
6	SLW.375	WASHER, lock, 3/8"	9	54	18A500	WASHER, clutch	1
18	HX-CS.37 5-16X1.5	SCREW, hex, cap, 3/8-16 x 1.5"	1	55	18A501	SCREW, socket head cap, 5/8-18 x 1"	1
33	HX-CS.37 5-16X1	SCREW, hex, cap, 3/8-16 x 1"	4	64	19C103	BELT	1
46	19C102	PULLEY, v-belt	1	132▲	16C394	LABEL, warning, entanglement	1
47	18B180	BUSHING, tapered, 35mm	1	143	19C109	GUARD	1
48	19B398	KEY, 8mm x 10mm x 1.75"	1	144	HX-CS.37 5-16X.75	SCREW, cap, 3/8-16 x 3/4"	4
49	18B460	PULLEY, bottom, stop	1				
50	19B999	CLUTCH, centrifugal	1				
51	18A503	GUARD, belt	1				
52	19B435	KEY, 3/8" X 3.5"	1				

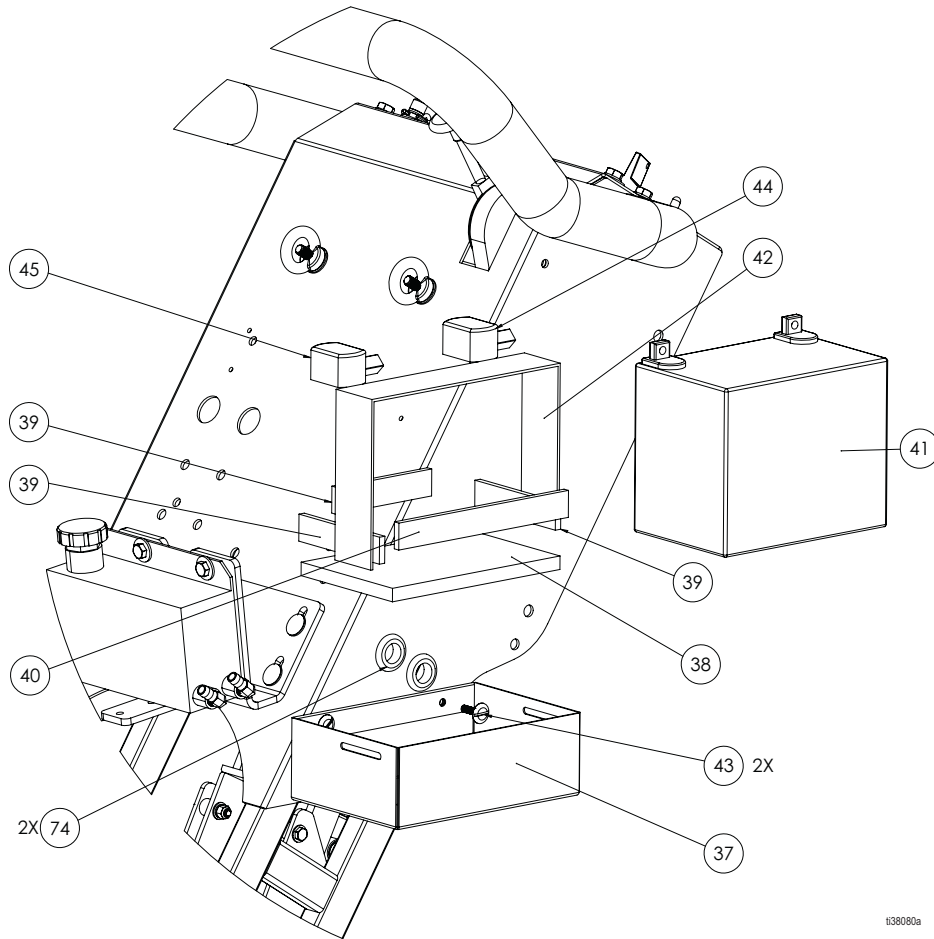
▲Replacement safety labels, tags, and cards are available at no cost.

### Standard-Speed (Model 25R105)

Ref.	Part	Description	Qty	Ref.	Part	Description	Qty
58	19B499	PULLEY, 28 tooth	1	69	FLW.375	WASHER, flat, 3/8"	4
59	19B435	KEY, 3/8" x 3.125"	1	70	SHSS.312 -18X.375	SCREW, set	2
60	18B344	BELT, power grip	1	132▲	16C394	LABEL, warning, equipment	1
61	18A503	GUARD, belt	1	143	19C109	GUARD	1
62	18B590	PULLEY, 56 tooth	1	144	17W979	SCREW, cap, 3/8-16 x 3/4"	4
63	19B422	BUSHING, taper, lock, 35mm	1				
64	18B363	KEY, 8mm x 10mm x 1.75"	1				
65	18B460	PULLEY, bottom, stop	1				
67	SLW.375	WASHER, lock, 3/8"	9				
68	HX-CS.62 5-18X1.5	SCREW, hex, cap, 3/8-16 x 1"	5				

▲Replacement safety labels, tags, and cards are available at no cost.

# Parts - Battery Assembly (Propane)

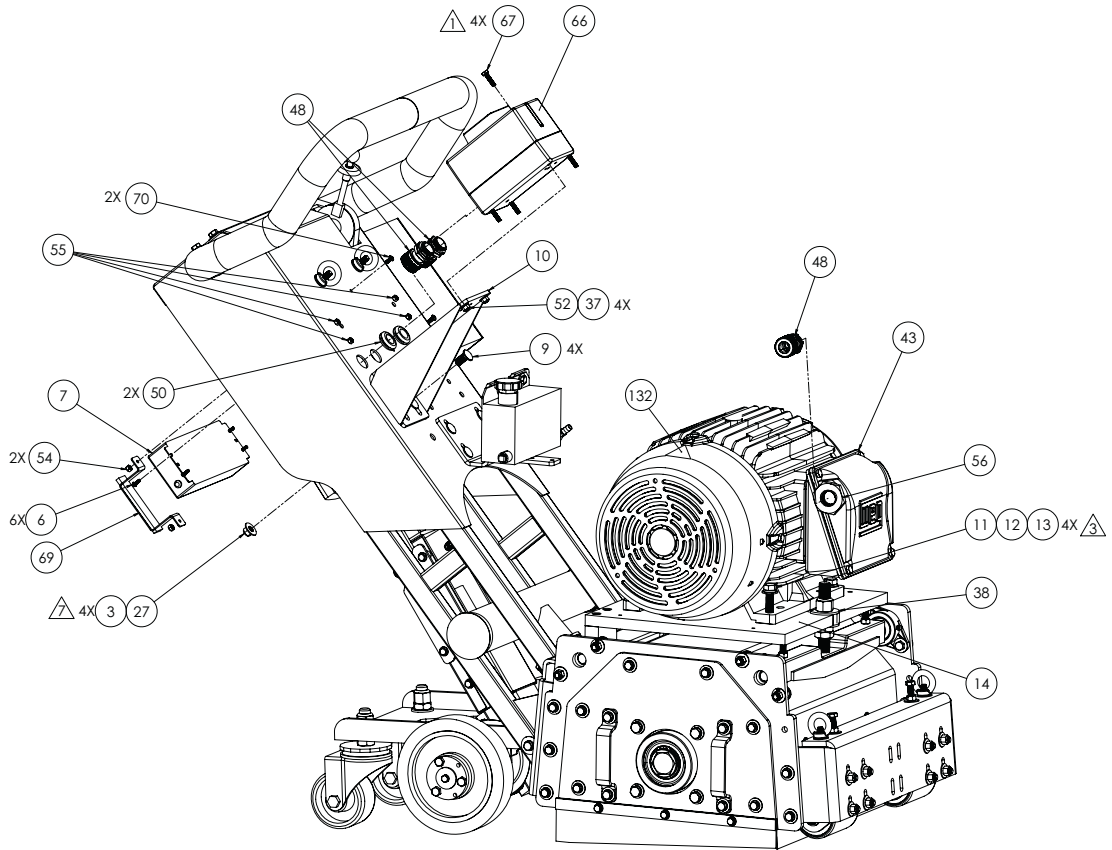


138080a

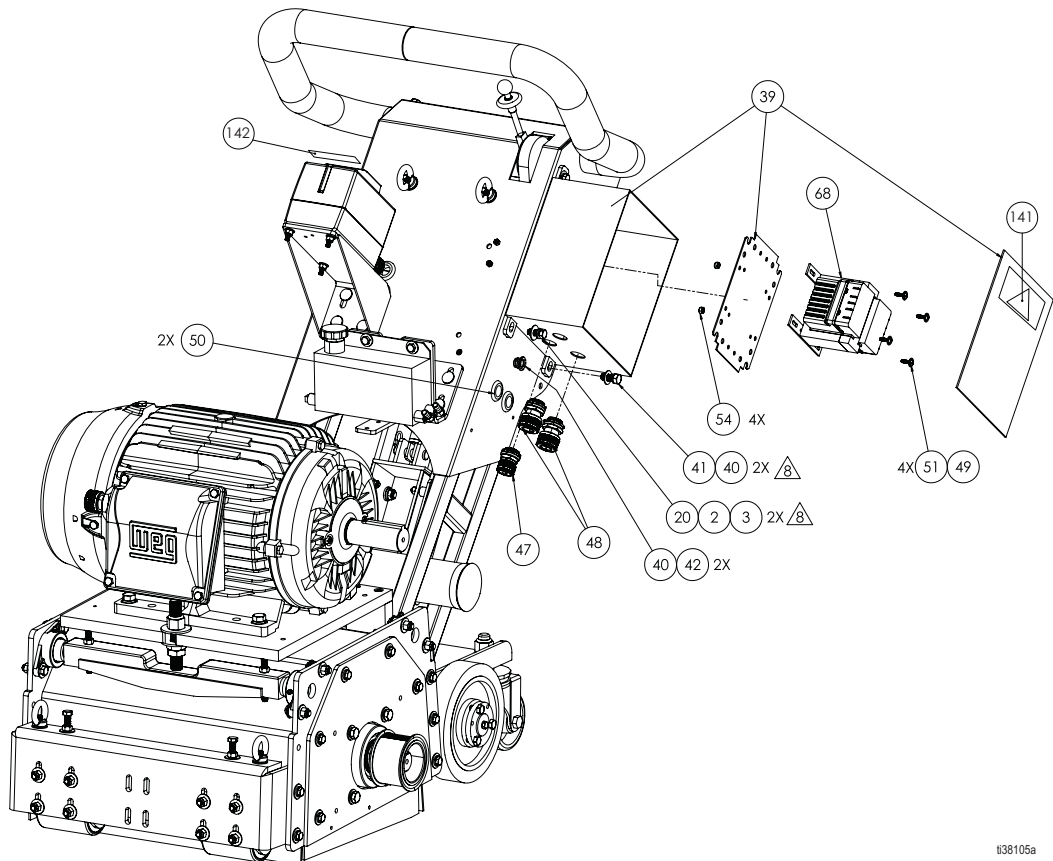
## Parts List - Battery Assembly (Propane)

Ref Part	Description	Qty	Ref Part	Description	Qty
37 17Y121	BOX, battery	1	43 LPMS.25-20X1.0	SCREW, low profile, 1/4-20 x 1"	2
38 18Y704	FOAM, urethane, 1/2"	1	44 801958	TERMINAL, battery, protector, red	1
39 18Y701	FOAM, urethane, 1/4"	3	45 801959	TERMINAL, battery, protector, black	1
40 18Y705	FOAM, urethane, 1/4"	1	74 18B851	GROMMET, 1 1/16" OD, 3/4" ID	2
41 B-SLADC12-35J	BATTERY, 35 AH agm	1			
42 18A786	STRAP, Velcro, 2" x 24"	1			

# Parts - Electrical Components (Electric)



t38104a



- Torque to 90 ± 5 in-lbs (10.2 ± 0.6 N·m)
- Torque to 40 ± 5 ft-lbs (54.2 ± 6.8 N·m)
- Torque to 23 - 27 ft-lbs (31.2 ± 36.6 N·m)
- Torque to 15 ± 5 ft-lbs (20.3 ± 6.8 N·m)

t38105a

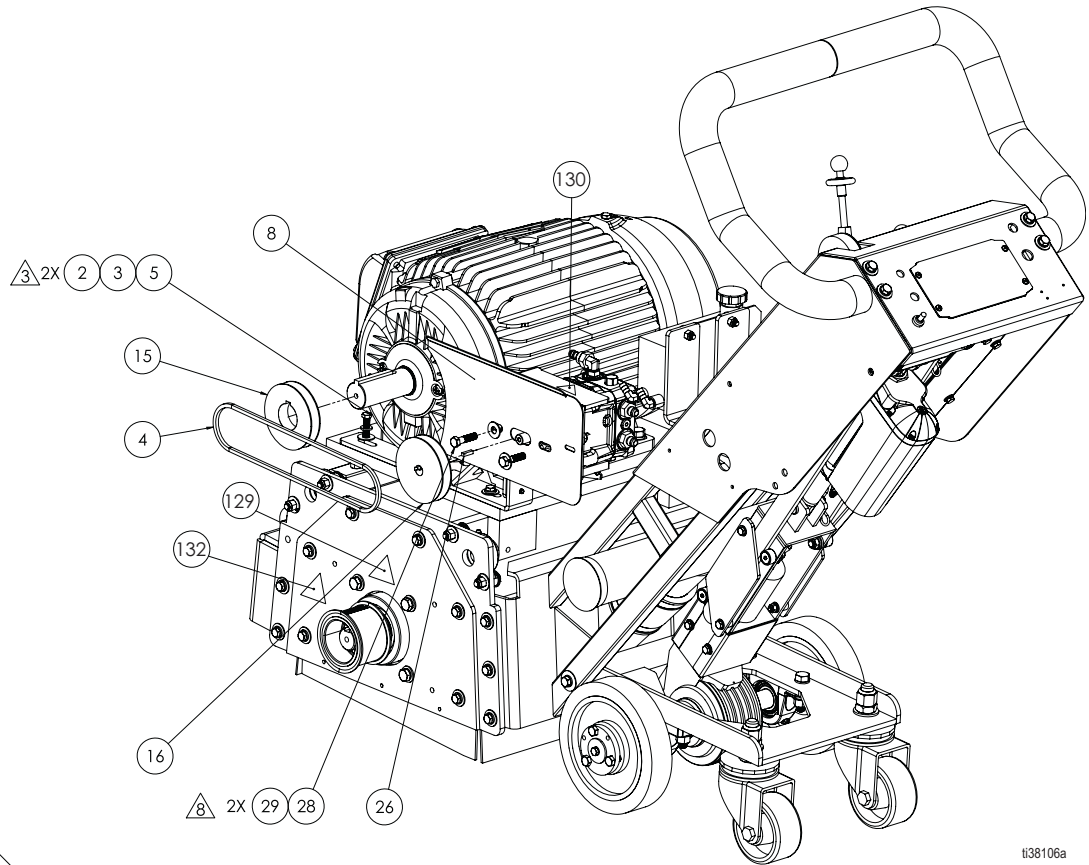
**Parts List - Electrical ComponentsSLW (Electric)**


Ref	Part	Description	Qty	Ref	Part	Description	Qty
2	SLW.375	WASHER, lock, 3/8"	2	47	18B763	STRAIN, wire, relief, .25-.38	1
3	FLW.375	WASHER, flat, 3/8"	6	48	18B762	STRAIN, wire, relief, .63-.75	5
6	117501	SCREW, hex, hd, 8-32 x 1/2"	6	49	FLW.M10	WASHER, flat, #10	4
7	18B861	CONVERTER, assy, 12V	1	50	18B851	GROMMET, 1 1/16" OD, 3/4" ID	4
9	113956	BOLT, carriage, 3/8"-16 x 1"	4	51	BH-SCS10-32X.75	SCREW, head, 10-32 x .75"	4
10	19B305	BRACKET, electric starter	1	52	NHN.25-20	NUT, nylock, 1/4"-20	4
11	HX-CS.50-13X2	SCREW, hex, 1/2"-13 x 2"	4	54	NHN10-32	NUT, nylock, 10-32"	2
12	SLW.50	WASHER, lock, 1/2"	4	55	NHN8-32	NUT, nylock, 8-32"	4
13	FLW.50	WASHER, flat, 1/2"	4	56	18B846	REDUCER, 1.5" NPT - .75" NPT	1
14	18B292	PLATE, motor	1	66	19B320	BOX, electric, start	1
20	HX-CS.375-16X1	SCREW, cap, 3/8"-16 x 1"	2	67	HX-CS.25-20X1	SCREW, hex, cap, 1/4"-20 x 1"	4
27	NHN.375-16	NUT, nylock, 3/8"-16	4	69	19B485	BRACKET, support	1
37	HX-CS.25-20X1	WASHER, flat, 1/4"	4	70	116610	SCREW, Phillips, 10-32" x 0.5"	2
38	18B579	WASHER, fender, 3/4"	1	132▲	16C394	LABEL, warning, entanglement	1
39	18B753	BOX, junction w/ bolts	1	141▲	25E178	LABEL, danger (60Hz)	1
40	FLW.437	WASHER, flat, 7/16"	4		196548	LABEL, caution (50Hz)	1
41	HX-CS.437-20X1	SCREW, cap, 7/16"-20 x 1"	2	142▲	19B507	LABEL, warning	1
42	NHN.437-20	NUT, nylock, 7/16"-20	2				
43	18B754	MOTOR, electric, 480V, 60Hz	1				
	18B755	MOTOR, electric, 380V, 50Hz	1				


▲Replacement warning, safety labels, tags, and cards are available at no cost.



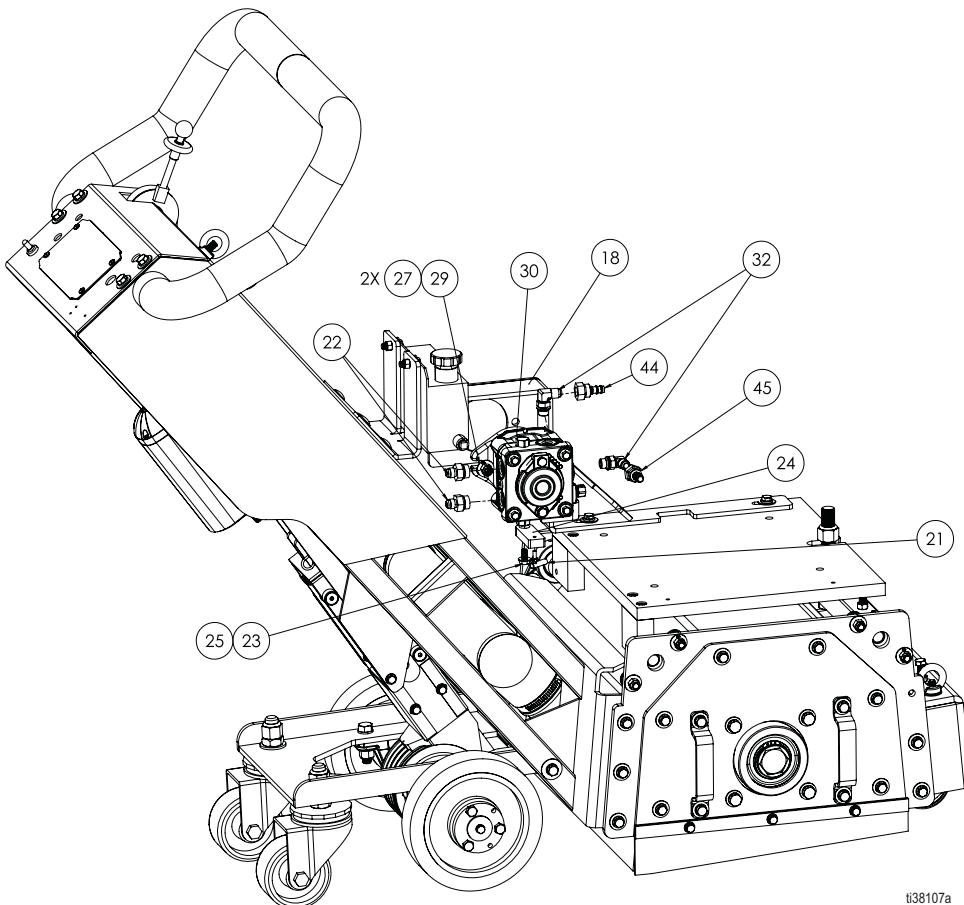
# Parts - Hydraulic Motor Assemblies (Electric)



 Torque to  $40 \pm 5$  ft-lbs  
( $54.2 \pm 6.8$  N·m)

 Torque to  $15 \pm 5$  ft-lbs  
( $20.3 \pm 6.8$  N·m)

t38106a

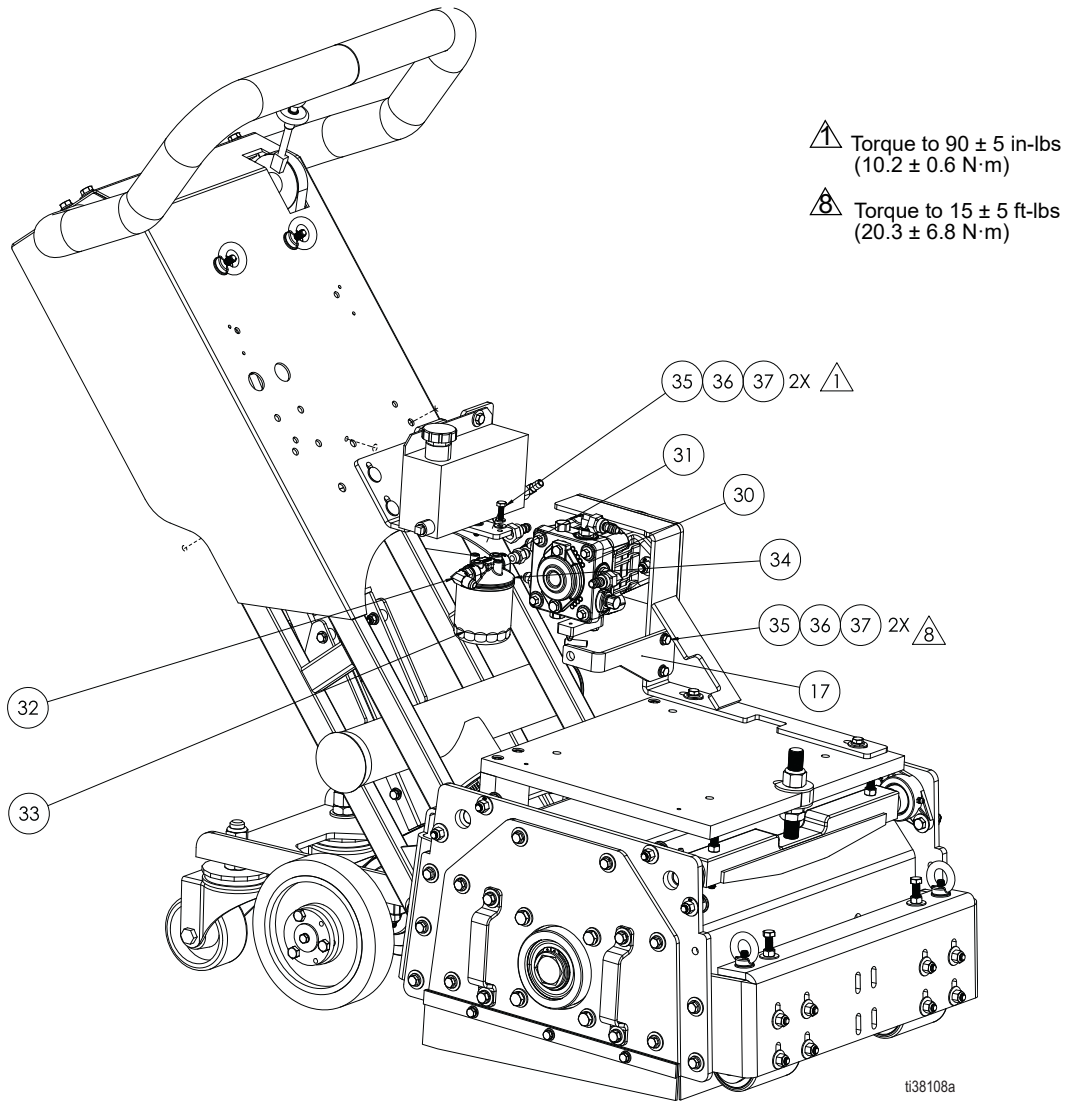


t38107a

## Parts List - Hydraulic Motor Assemblies (Electric)

Ref	Part	Description	Qty	Ref	Part	Description	Qty
2	SLW.375	WASHER, lock, 3/8"	2	26	18B339	KEY, 3/16 x .75	1
3	FLW.375	WASHER, flat, 3/8"	2	27	NHN.375-16	NUT, nylock, 3/8"-16	2
4	18B584	BELT, hydraulic, pulley	1	28	HX-CS.375-16X1.5	SCREW, hex, cap, 3/8"-16 x 1.5"	2
5	HX-CS.375-16x1.25	BOLT, hex, head, 3/8"-16 x 1.25"	2	29	FLW.375G9	WASHER, flat, 3/8"	4
8	18B561	GUARD, belt, rear side	1	30	18B729	PUMP, hydraulic	1
15	18B581	V-PULLEY (1.625" bore)	1	32	18B444	FITTING, adapter, 90°	2
16	18B582	V-PULLEY (0.625" bore)	1	44	18B743	HOSE, hydraulic, 15"	1
18	18B589	SUPPORT, gear pump, hydro	1	45	18B744	HOSE, hydraulic, 8"	1
21	18B423	JOINT, ball	1	129▲	16C394	LABEL, warning, entanglement	1
22	18B445	FITTING, adapter	2	130▲	16D646	LABEL, warning, hot surface	1
23	HX-CS.M8-1.25X16mm	SCREW, hex, cap, 1.25 x 16mm	1	132▲	16C393	LABEL, warning, foot cut	2
24	18B368	ARM, pump control	1	▲Replacement safety labels, tags, and cards are available at no cost.			
25	HX-CS.M8-1.25X25mm	WASHER, flat, M8	1				

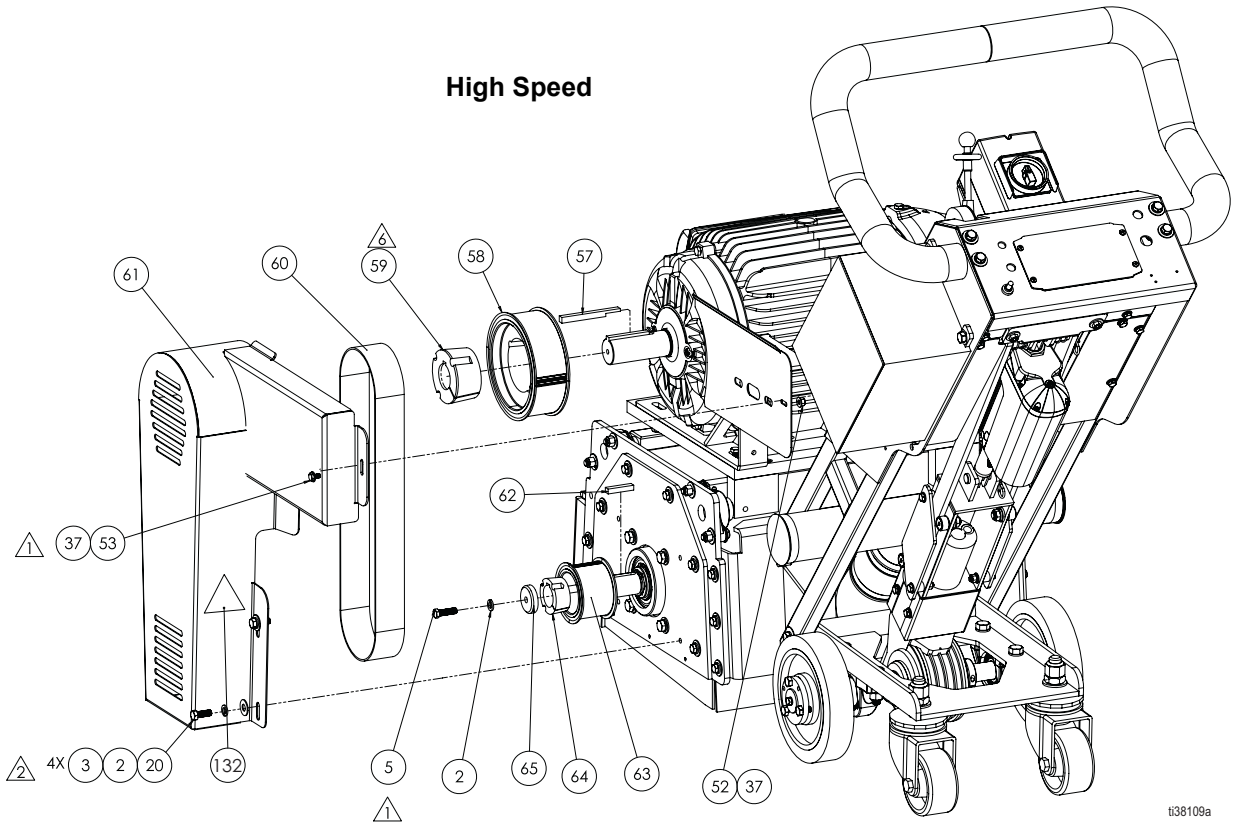
# Parts - Hydraulic Assembly (Electric)



## Parts List - Hydraulic Tank Assembly (Electric)

Ref Part	Description	Qty	Ref Part	Description	Qty
17 18B585	MOUNT, control, cable	1	34 116828	HEAD, filter, spin-on	1
30 18B729	PUMP, hydraulic	1	35 HX-CS.25-20X.75	SCREW, hex, 1/4"-20 x .75"	4
31 18B443	FITTING, adapter	1	36 SLW.25	WASHER, lock, 1/4"	4
32 18B444	FITTING, adapter, 90°	1	37 HX-CS.25-20X1	WASHER, flat, 1/4"	4
33 116830	FILTER, oil	1			

# Parts - Pulley Assemblies (Electric - 480V & 380V)

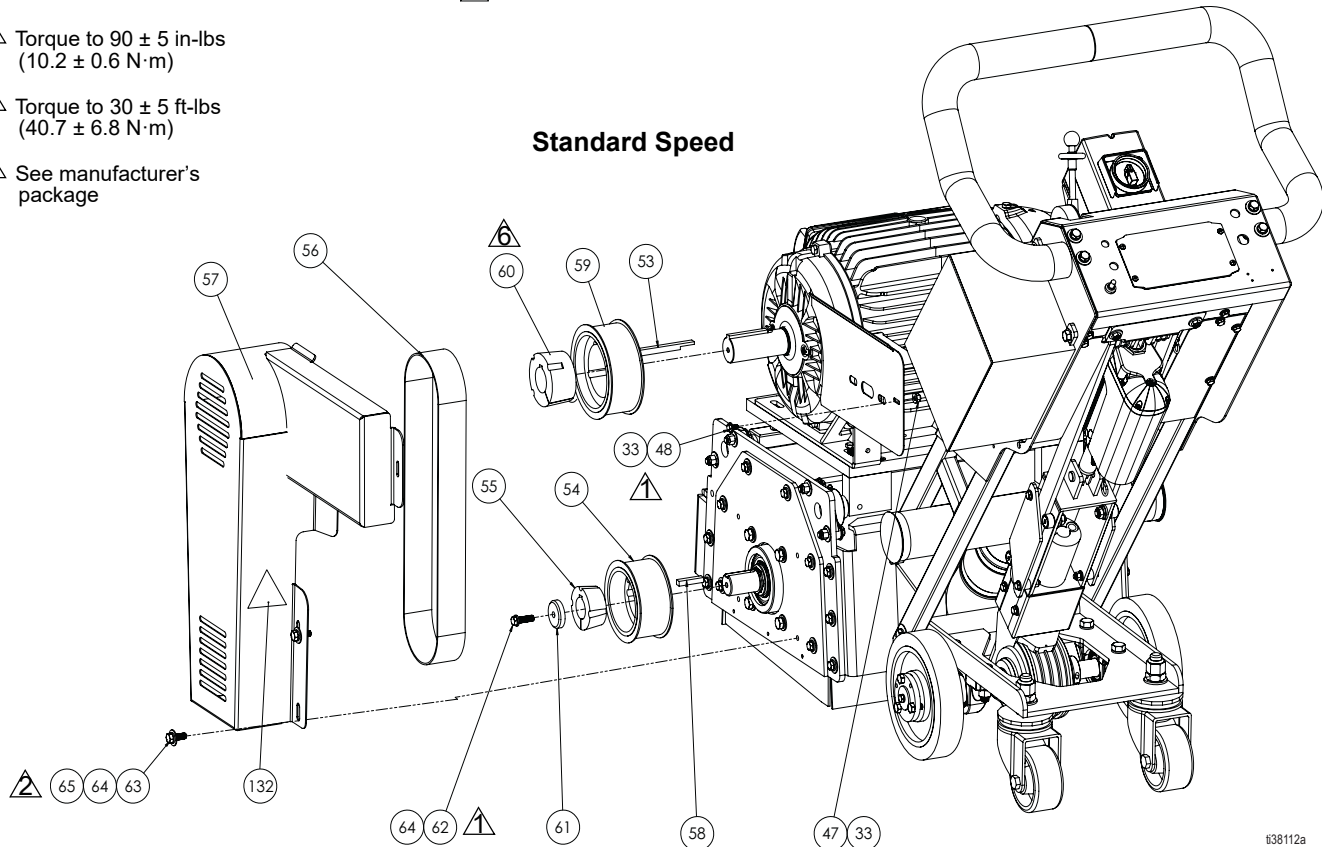


t38109a

Torque to  $90 \pm 5$  in-lbs  
( $10.2 \pm 0.6$  N·m)

Torque to  $30 \pm 5$  ft-lbs  
( $40.7 \pm 6.8$  N·m)

See manufacturer's package



t38112a

## Parts List - Pulley Assemblies (Electric 480V & 380V)

### High Speed (Models 25P476 & 25P783)

Ref	Part	Description	Qty	Ref	Part	Description	Qty
2	SLW.375	WASHER, lock, 3/8"	5	60	19B362	BELT, power grip	1
3	FLW.375	WASHER, flat, 3/8"	4	61	19B383	GUARD, belt	1
5	HX-CS.375-16x1.25	BOLT, hex, 3/8"-16 x 1.25"	1	62	18B363	KEY, 8mm x 10mm	1
20	HX-CS.375-16X1	SCREW, hex, 3/8"-16 x 1"	1	63	19B378	PULLEY, 34 tooth, drum side	1
37	HX-CS.25-20X1	WASHER, flat, 1/4"	2	64	18B180	BUSHING, taper, lock, 35mm	1
52	NHN.25-20	NUT, nylock, 1/4-20	1	65	18B586	STOP, pulley	1
53	HX-CS.25-20X.5	SCREW, hex, 1/4"-20 x .5"	1	132▲	16C394	LABEL, warning, entanglement	1
57	18B587	KEY, step	1				
58	19B379	PULLEY, 64 tooth	1				
59	18B558	BUSHING, tapered, 1-5/8"	1				

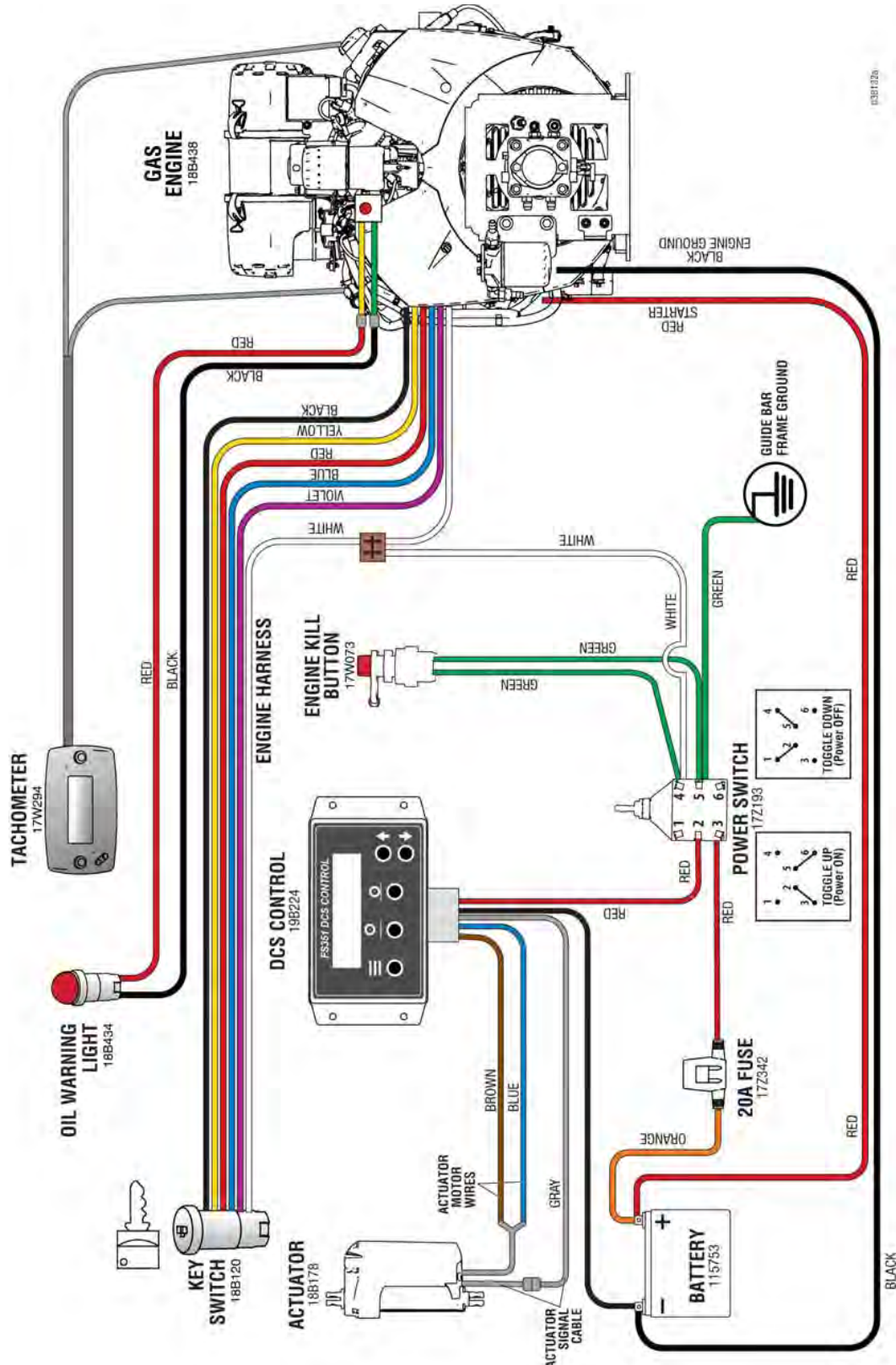
### Standard Speed (Models 25R102 & 25R103)

Ref	Part	Description	Qty	Ref	Part	Description	Qty
33	HX-CS.25-20X1	WASHER, flat, 1/4"	2	60	18B588	BUSHING, tapered, 1-5/8"	1
47	NHN.25-20	NUT, nylock, 1/4-20	1	61	18B586	STOP, pulley	1
48	HX-CS.25-20X.5	SCREW, hex, 1/4"-20 x .5"	1	62	HX-CS.375-16x1.25	BOLT, head, 3/8-16 x 1.25"	1
53	18B587	KEY, step	1	63	HX-CS.375-16X1	SCREW, hex, cap, 3/8-16 x 1"	1
54	18B459	PULLEY, 48 tooth	1	64	SLW.375	WASHER, lock, 3/8"	2
55	18B463	LOCK, taper, 35mm	1	65	FLW.375	WASHER, flat, 3/8"	1
56	19B464	BELT, power grip	1	132▲	16C394	LABEL, warning, entanglement	1
57	19B383	GUARD, belt	1				
58	18B363	KEY, 8mm x 10mm	1				
59	18B590	PULLEY, 56 tooth	1				

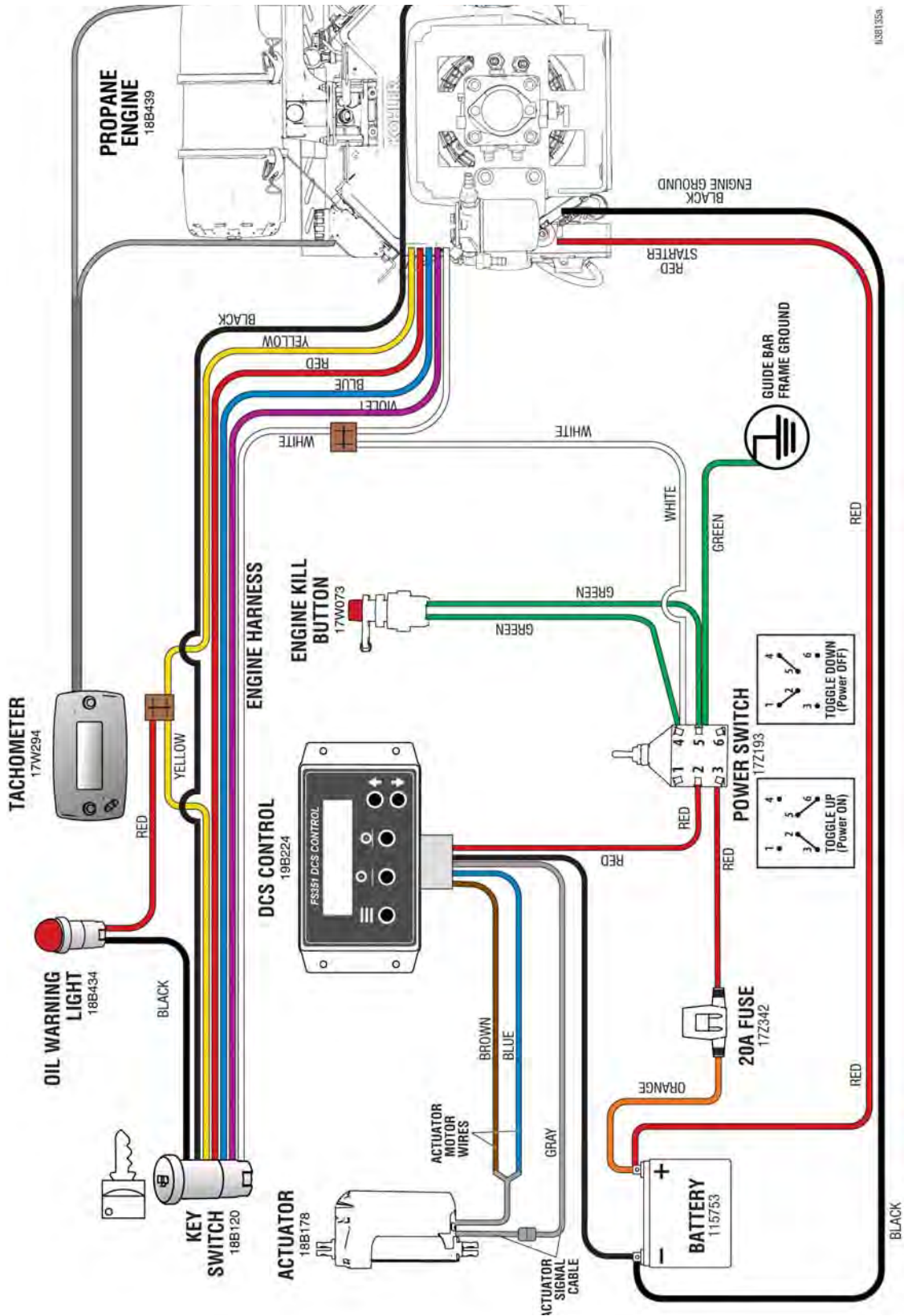
▲Replacement safety labels, tags, and cards are available at no cost.

# Wiring Diagram

## Gas Models



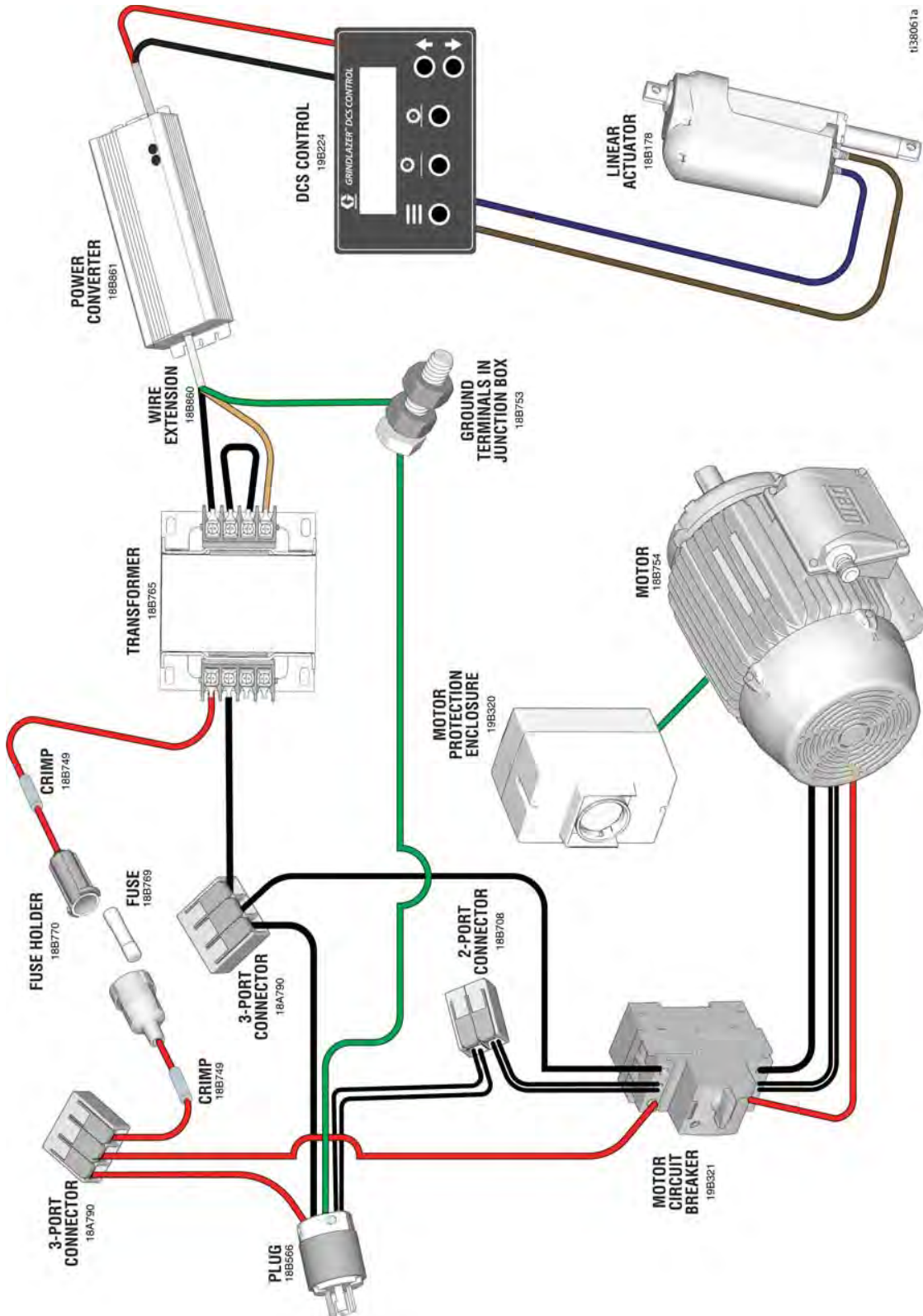
# Propane Models



103811554

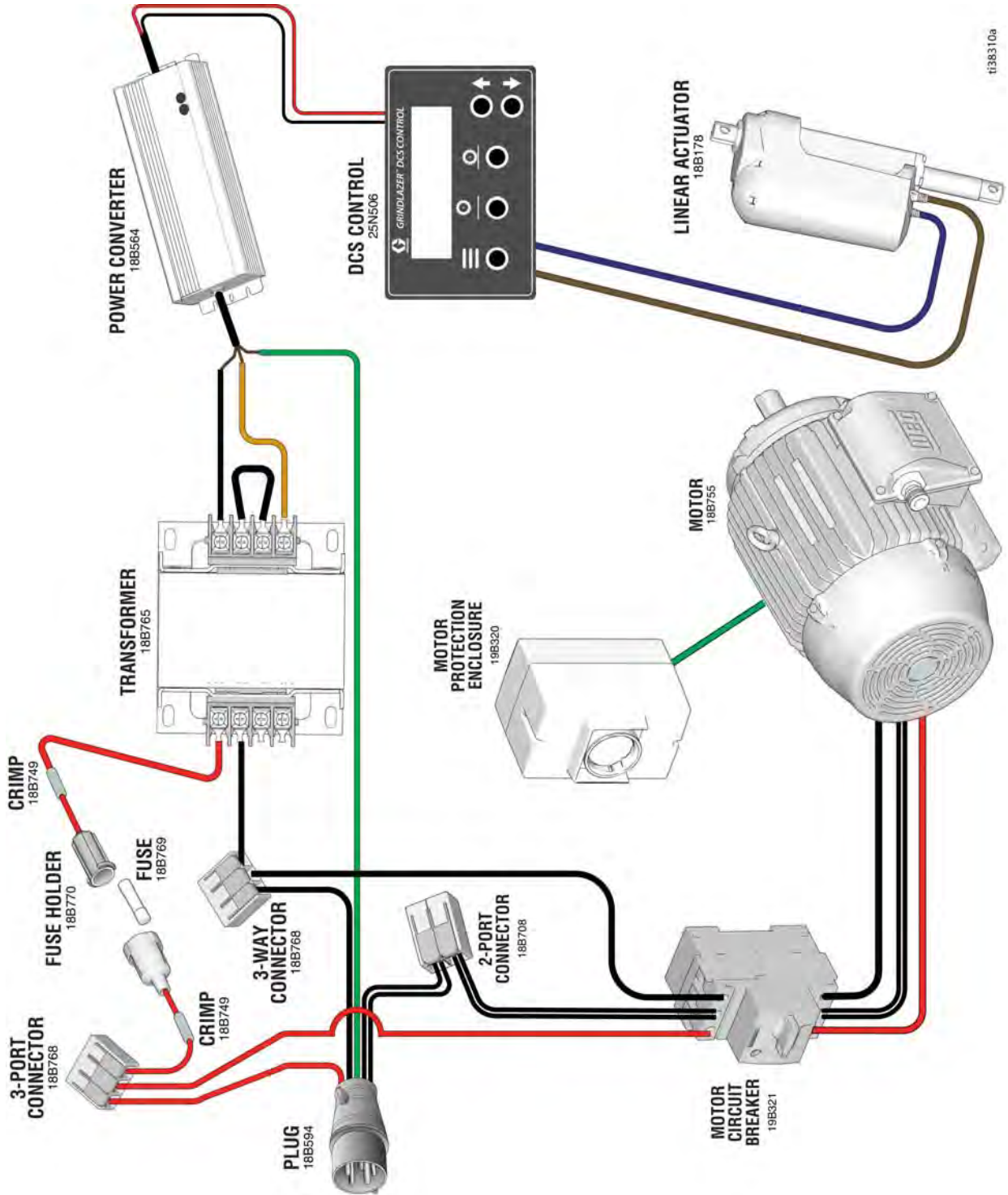


# Electric Models (480V)



1838061a

# Electric Models (380V)



138310a

# Technical Data

<b>FS351 G DCS</b>		
Maximum Working Pressure	750 psi	52 bar, 5.2 MPa
<b>Noise level (dBa)</b>		
Sound power	107 dBa per ISO 3744	
Sound pressure	91 dBa measured at 3.1 feet (1m)	
<b>Vibration level*</b>		
Right/Left Hand	14.5 m/sec <sup>2</sup>	
* Vibration measured per ISO 5349 based on 8 hour daily exposure		
<b>Dimensions/Weight (unpacked)</b>	<b>US</b>	<b>Metric</b>
Height	42 in.	107 cm
Length	57 in.	145 cm
Width	46 in.	117 cm
Weight	725 lb	329 kg

<b>FS351 P DCS</b>		
Maximum Working Pressure	1750 psi	121 bar, 21.1 MPa
<b>Noise level (dBa)</b>		
Sound power	106 dBa per ISO 3744	
Sound pressure	90 dBa measured at 3.1 feet (1m)	
<b>Vibration level*</b>		
Right/Left Hand	10.0 m/sec <sup>2</sup>	
* Vibration measured per ISO 5349 based on 8 hour daily exposure		
<b>Dimensions/Weight (unpacked)</b>	<b>US</b>	<b>Metric</b>
Height	42 in.	107 cm
Length	60 in.	152 cm
Width	46 in.	117 cm
Weight	715 lb	324 kg

<b>FS351 E DCS</b>		
Maximum Working Pressure	1000 psi	69 bar, 6.9 MPa
<b>Power Requirements</b>		
25P479 / 25R106	480V, 60 Hz, 3 phase, 24.7A	
25P782 / 25R107	380V, 50 Hz, 3 phase, 27.9A	
<b>Noise level (dBa)</b>		
Sound power	105 dBa per ISO 3744	
Sound pressure	88 dBa measured at 3.1 feet (1m)	
<b>Vibration level*</b>		
Right/Left Hand	6.9 m/sec <sup>2</sup>	
* Vibration measured per ISO 5349 based on 8 hour daily exposure		
<b>Dimensions/Weight (unpacked)</b>	<b>US</b>	<b>Metric</b>
Height	36 in.	91 cm
Length	60 in.	152 cm
Width	46 in.	117 cm
Weight	910 lb	413 kg

# California Proposition 65

## CALIFORNIA RESIDENTS

 **WARNING:** Cancer and reproductive harm – [www.P65warnings.ca.gov](http://www.P65warnings.ca.gov).

# SMITH Standard Warranty

SMITH warrants all equipment referenced in this document which is manufactured by SMITH and bearing its name to be free from defects in material and workmanship on the date of sale to the original purchaser for use. With the exception of any special, extended, or limited warranty published by SMITH, SMITH will, for a period of twelve months from the date of sale, repair or replace any part of the equipment determined by SMITH to be defective. This warranty applies only when the equipment is installed, operated and maintained in accordance with SMITH's written recommendations.

This warranty does not cover, and SMITH shall not be liable for general wear and tear, or any malfunction, damage or wear caused by faulty installation, misapplication, abrasion, corrosion, inadequate or improper maintenance, negligence, accident, tampering, or substitution of non-SMITH component parts. Nor shall SMITH be liable for malfunction, damage or wear caused by the incompatibility of SMITH equipment with structures, accessories, equipment or materials not supplied by SMITH, or the improper design, manufacture, installation, operation or maintenance of structures, accessories, equipment or materials not supplied by SMITH.

This warranty is conditioned upon the prepaid return of the equipment claimed to be defective to an authorized SMITH distributor for verification of the claimed defect. If the claimed defect is verified, SMITH will repair or replace free of charge any defective parts. The equipment will be returned to the original purchaser transportation prepaid. If inspection of the equipment does not disclose any defect in material or workmanship, repairs will be made at a reasonable charge, which charges may include the costs of parts, labor, and transportation.

**THIS WARRANTY IS EXCLUSIVE, AND IS IN LIEU OF ANY OTHER WARRANTIES, EXPRESS OR IMPLIED, INCLUDING BUT NOT LIMITED TO WARRANTY OF MERCHANTABILITY OR WARRANTY OF FITNESS FOR A PARTICULAR PURPOSE.**

SMITH's sole obligation and buyer's sole remedy for any breach of warranty shall be as set forth above. The buyer agrees that no other remedy (including, but not limited to, incidental or consequential damages for lost profits, lost sales, injury to person or property, or any other incidental or consequential loss) shall be available. Any action for breach of warranty must be brought within two (2) years of the date of sale.

**SMITH MAKES NO WARRANTY, AND DISCLAIMS ALL IMPLIED WARRANTIES OF MERCHANTABILITY AND FITNESS FOR A PARTICULAR PURPOSE, IN CONNECTION WITH ACCESSORIES, EQUIPMENT, MATERIALS OR COMPONENTS SOLD BUT NOT MANUFACTURED BY SMITH.** These items sold, but not manufactured by SMITH (such as electric motors, switches, hose, etc.), are subject to the warranty, if any, of their manufacturer. SMITH will provide purchaser with reasonable assistance in making any claim for breach of these warranties.

In no event will SMITH be liable for indirect, incidental, special or consequential damages resulting from SMITH supplying equipment hereunder, or the furnishing, performance, or use of any products or other goods sold hereto, whether due to a breach of contract, breach of warranty, the negligence of SMITH, or otherwise.

## **FOR SMITH CANADA CUSTOMERS**

The Parties acknowledge that they have required that the present document, as well as all documents, notices and legal proceedings entered into, given or instituted pursuant hereto or relating directly or indirectly hereto, be drawn up in English. Les parties reconnaissent avoir convenu que la rédaction du présente document sera en Anglais, ainsi que tous documents, avis et procédures judiciaires exécutés, donnés ou intentés, à la suite de ou en rapport, directement ou indirectement, avec les procédures concernées.

## SMITH Information

For the latest information about SMITH products, visit [www.smithmfg.com](http://www.smithmfg.com).

**TO PLACE AN ORDER**, call 1-800-653-9311 for your SMITH sales representative.

*All written and visual data contained in this document reflects the latest product information available at the time of publication. SMITH reserves the right to make changes at any time without notice.*

Original instructions. This manual contains English. MM 3A7832

**SMITH SURFACE-PREP SOLUTIONS • 2504 NW 19 ST • POMPANO BEACH, FL • USA**  
**Copyright 2020, SMITH Manufacturing.**

[www.smithmfg.com](http://www.smithmfg.com)

Revision B, June 2021