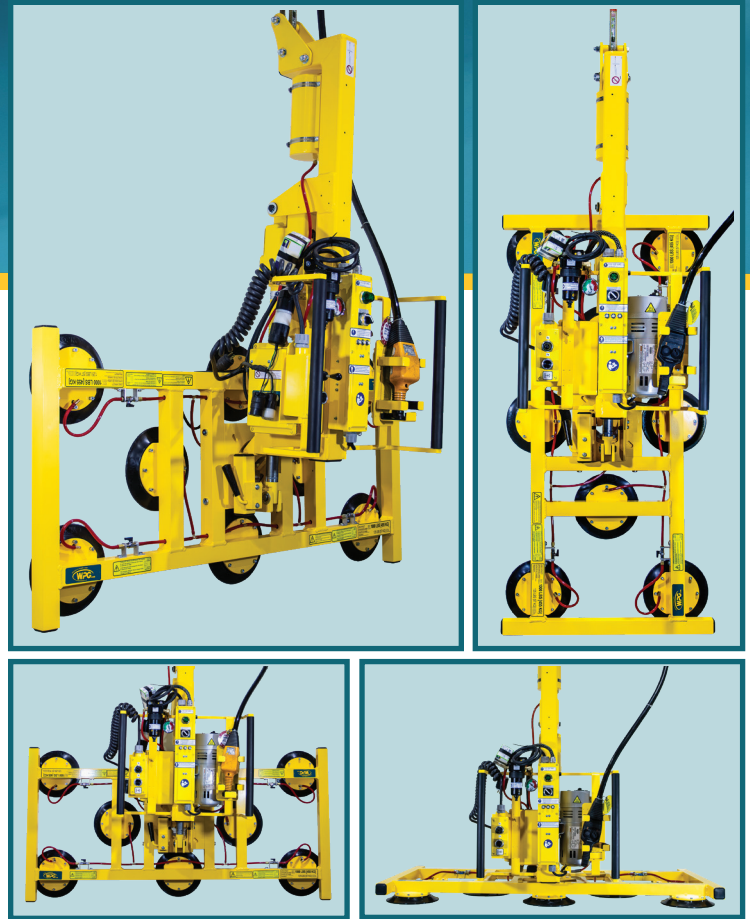




MANUAL ROTATOR/ POWER TILTER 1000

MODEL: MRPT89AC

Trusted on production floors worldwide, this lifter's combination of economy and versatility suits many needs.



Lightweight but Powerful Design

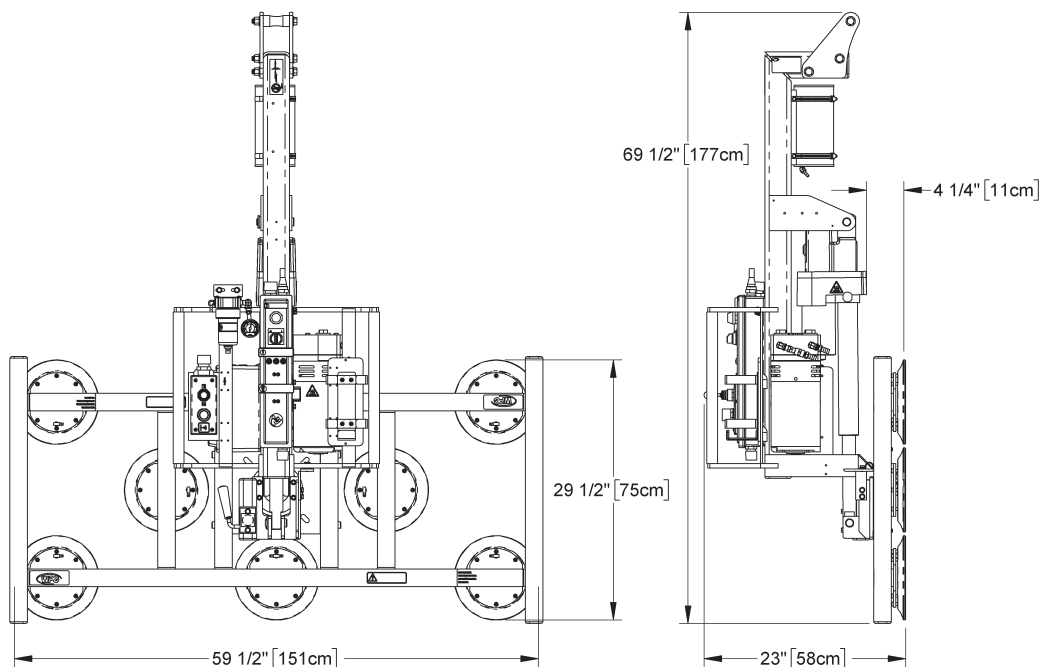
At 278 lbs (126 kg), the lifter is easy to move and operate – but handles loads weighing up to 1,000 lbs (455 kg)!


Interchangeable Pad Frames

Match a variety of load shapes and sizes by choosing a pad frame with telescoping arms!

Rotation and Tilt Capabilities

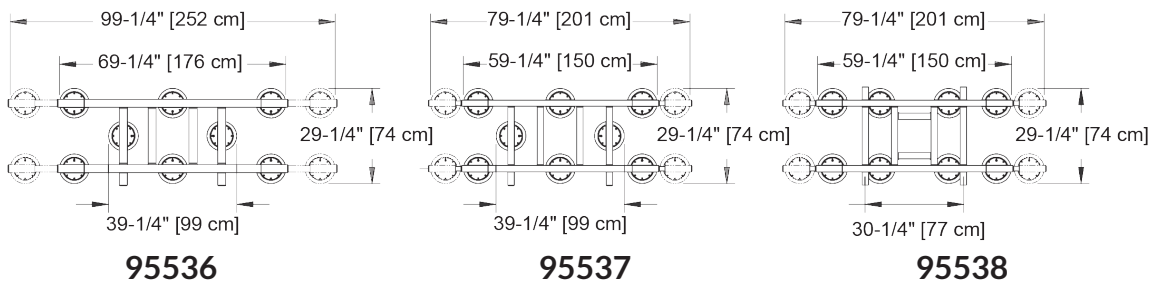
The lifter's full 360-degree range of rotation allows greater load positioning, while the powered tilt function effortlessly moves a load from flat to upright.



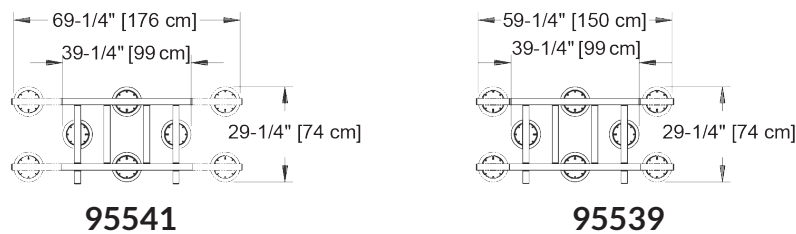
Model	MRPT89AC
Maximum Load Capacity	1,000 lbs [455 kg]
Load Movement	Manual rotation, 360° edgewise, with locking at each 1/4 turn Power tilt, 90° between upright and flat 
Standard Operating Power	120 volts AC, 60 hertz, 12 amps
Tilt Duty	60 tilts per hour
Time to Achieve 90° Tilt	9 seconds (approximately)
Standard Pad Spread	29-1/2" x 59-1/2" [75 cm x 151 cm]
Attach	4 seconds (approximately)
Release	3 seconds (approximately)
Number/Size of Vacuum Pads	8 / 9" [23 cm] diameter
Lifter Weight	278 lbs [126 kg]

INTERCHANGEABLE PAD FRAMES

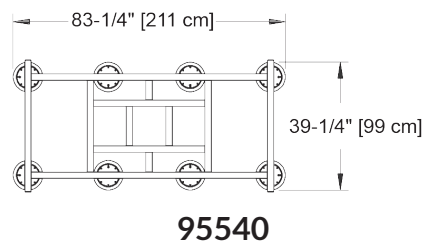
Telescoping Pad Arms



Removable Pad Arms



Oversize Pad Frame



STANDARD FEATURES

Green Lift Light

Provides visual assurance to know when vacuum is sufficient for lifting

Movable Control Pendant

Enables operator to control lifter functions at a safe distance from loads in motion

Vacuum Gauge

Features green and red zones to clearly indicate whether vacuum level is sufficient for lifting

Vacuum Reserve Tank

Reduces attachment time and extends time for supporting loads during a power outage

Vacuum Line Filter

Prevents liquid and other contaminants from damaging the vacuum generating system

Spring-Mounted Vacuum Pads

Automatically adjust to match the angle of load surfaces, easing attachment

Twist-Lock Electrical Plug

Provides a secure connection to the AC power source, to prevent accidental disconnection

Blow-Off Release

Reverses airflow to quickly separate vacuum pads from loads, without after-stick

AVAILABLE OPTIONS

12-Volt/DC Vacuum Back-Up System (93756FM)

Employs battery-powered auxiliary pump to automatically maintain vacuum during a power outage

Vacuum Loss Warning Buzzer (93780BM)

Uses advanced logic circuitry to monitor vacuum level and sound an alarm only when insufficient vacuum could be hazardous

Voltage Adaptation (95530 & 95530AM)

Enables lifters to operate using AC voltages best suited to specific uses and geographical areas

Individual Pad Shutoffs (93011)

Enable lifter to handle various load sizes and shapes by shutting off airflow from specific vacuum pads

Pad Shutoffs with Individual Gauges

Provides the same advantages as Pad Shutoffs, while adding vacuum gauges to monitor the vacuum level at each vacuum pad

Interchangeable Pad Frames

Easily adapt your lifter to the specific load sizes and shapes you deal with most. See illustrations above for details.

Telescoping Pad Arms

Can quickly be extended or retracted, to support many different load dimensions

Control Handle Extensions

Provide you with extra distance to tilt materials safely while maintaining control of the lifter

Adjustable Vertical Handles (95527)

Easily slide upward or downward as needed to give the operator optimal control

Alternative Pad Compounds

Specially designed for heat resistance, marking resistance, coated surfaces and other purposes

DESIGN STANDARDS

ASME B30.20 (BTH-1 Design Category "B", Service Class "0"): Industry standards established by the American Society of Mechanical Engineers (ASME) and published by the American National Standards Institute (ANSI)

