

AIR-POWERED TILTER 1500

MODEL: PT1010TAIR

With its 1500-pound load capacity, this Powr-Grip model meets the challenges of lifting and positioning stone slabs and more.

Compressed-Air Power

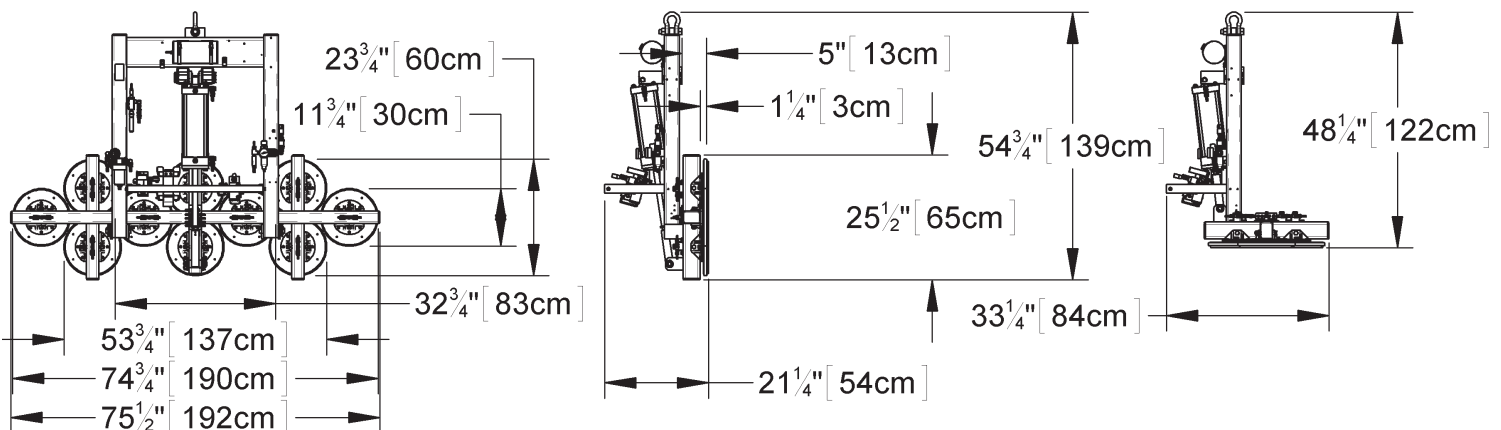
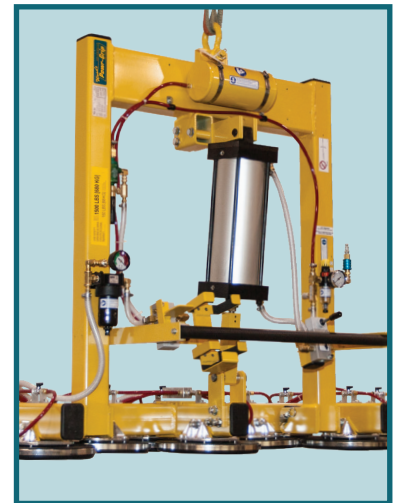
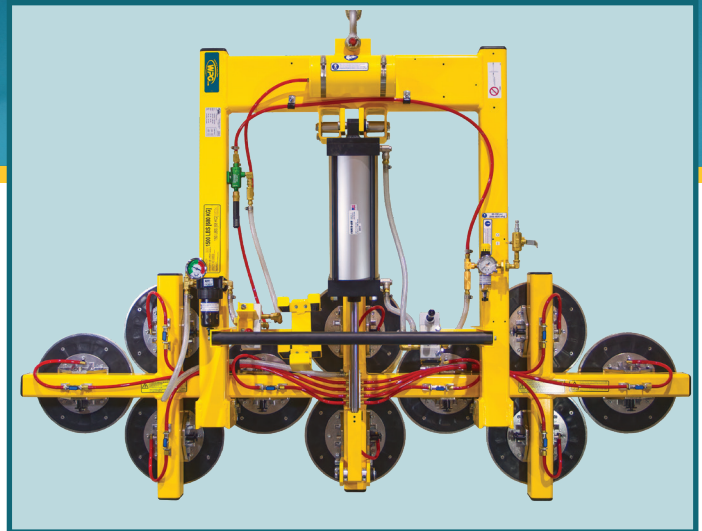
Offers greater resistance to moisture, making it a better choice for handling stone.

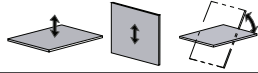
Powered 90° Tilt Capability

Provides operator with more ease in moving material between the rack and the cutting table.

Individual Pad Shutoffs

Allows attachment of loads that have irregular shapes



Models	PT1010TAIR	
Maximum Load Capacity	1,500 lbs [680 kg]	
Standard Pad Spread	Minimum: 11-3/4" x 32-3/4" [30 cm x 83 cm] Maximum: 23-3/4" x 74-3/4" [60 cm x 190 cm]	
Number/Size of Pads	10 / 10" [25 cm] diameter vacuum pads with replaceable sealing rings	
Load Movement	Power tilt, 90° between upright and flat	
Lifter Weight (for Air-Power System)	340 lbs [155 kg]	
Standard Operating Power	Compressed air, 11 SCFM [311 liters/min] @ 80 psi [552 kPa]	
Apply/Release Times	10 seconds/ 3 seconds (approximately)	
Time for 90° Tilt	8 seconds (approximately)	
Tilt Duty	Continuous	
Alternative Power Systems (see next page)	AC power system (PT1010TAC) DC power system (PT1010TDC)	

STANDARD FEATURES

Individual Pad Shutoffs

Enable lifter to handle various load sizes and shapes by shutting off airflow from specific vacuum pads

Replacable Sealing Rings

Adhere to textured surfaces and resist abrasion from grit and other particles

Spring-Mounted Vacuum Pads

Automatically adjust to match the angle of load surfaces, easing attachment

Vacuum Gauge

Features green and red zones, to clearly indicate whether vacuum level is sufficient for lifting

Vacuum Reserve Tank

Reduces attachment time and extends time for supporting loads during a power outage

Vacuum Line Filters

Prevent contaminants from damaging the vacuum generating system

Two-Action, Blow-Off Release

Uses two separate motions to avoid accidental release, and reverses airflow to quickly release loads without after-stick

AVAILABLE OPTIONS

12-Volt/DC Vacuum Back-Up System (93756BM)

Employs battery-powered auxiliary pump to automatically maintain vacuum during a power outage

Vacuum Loss Warning Buzzer (93780AM)

Uses advanced logic circuitry to monitor vacuum level and sound an alarm only when insufficient vacuum could be hazardous

Control Handle Extensions (95857)

Enable the operator to maintain control of the load while remaining safely outside of its tilt path

Pad Frame Extension Arms (95859)

Increase the lifter's pad spread to support large or irregularly shaped loads

Alternative Pad Frame Dimensions and Configurations

Enable lifter to handle additional load sizes and shapes, including:

33-3/4" x 74-3/4" [86 cm x 190 cm] (59176AM)

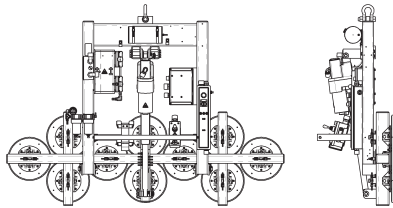
60-3/4" x 90-3/4" [154 cm x 230 cm] (59176BM)

DESIGN STANDARDS

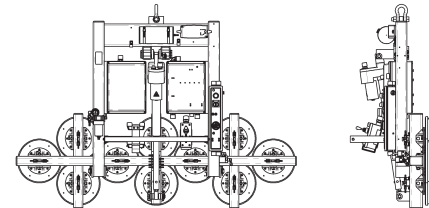
ASME B30.20 (BTH-1 Design Category "B", Service Class "0"): Industry standards established by the American Society of Mechanical Engineers (ASME) and published by the American National Standards Institute (ANSI)

ALTERNATIVE POWER SYSTEMS

AC POWER SYSTEM	
Standard Operating Power	120 volts, AC 50/60 hertz, 6 amps (240 volts, AC 50/60 hertz, 3 amps also available)
Vacuum Pump	Wobble Piston, 5 SCFM [142 liters/min] nominal airflow
Apply/ Release	10 seconds/ 6 seconds (approximately)
Time for 90° Tilt	14 seconds (approximately)
Tilt Duty	40 tilts per hours (at maximum load)
Lifter Weight	405 lbs [184 kg]
Standard Feature	<ul style="list-style-type: none"> • Green Lift Light: Provides visual assurance to know when vacuum is sufficient for lifting • Movable Control Pendant: Enables operator to control lifter functions at a safe distance from loads in motion • Twist-Lock Electrical Plug: Provides a secure connection to the AC power source, to prevent accidental disconnection • Two-Action, Blow-Off Release: Uses two separate buttons to avoid accidental release, and reverses airflow to quickly release loads without after-stick



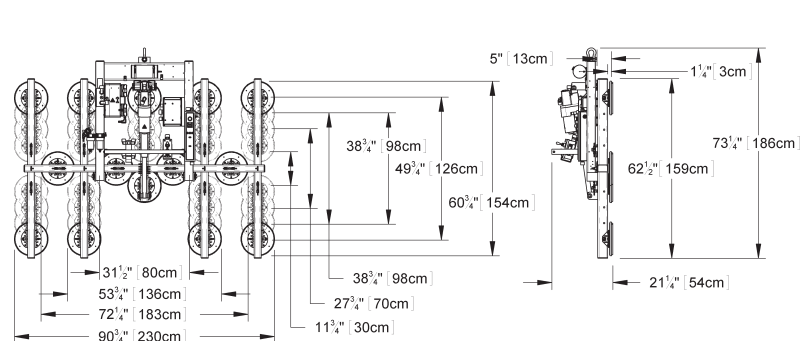
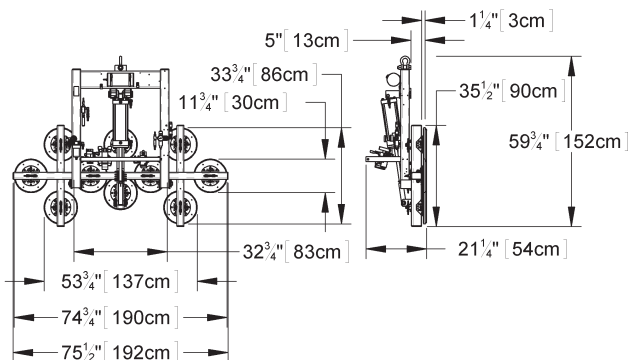
DC POWER SYSTEM	
Standard Operating Power	12 volts DC, 33 amps
Vacuum Pump	Diaphragm type, 3 SCFM [85 liters/min] nominal airflow
Apply/ Release	10 seconds/ 6 seconds (approximately)
Time for 90° Tilt	21 seconds (approximately)
Tilt Duty	36 tilts per hour (at maximum load)
Lifter Weight	430 lbs [196 kg]
Standard Features	<ul style="list-style-type: none"> • Battery and Charger: Provide independent, rechargeable power source for cord-free lifter operation in any location; on-board charger features status indicator and automatic shut-off • Battery Gauge: Shows energy level in real time, to help determine when charging is needed • Green Lift Light: Provides visual assurance to know when vacuum is sufficient for lifting • Movable Control Pendant: Enables operator to control lifter functions at a safe distance from loads in motion • Blow-Off Release: Reverses airflow to quickly separate vacuum pads from loads, without after-stick



OPTIONAL FRAME CONFIGURATIONS

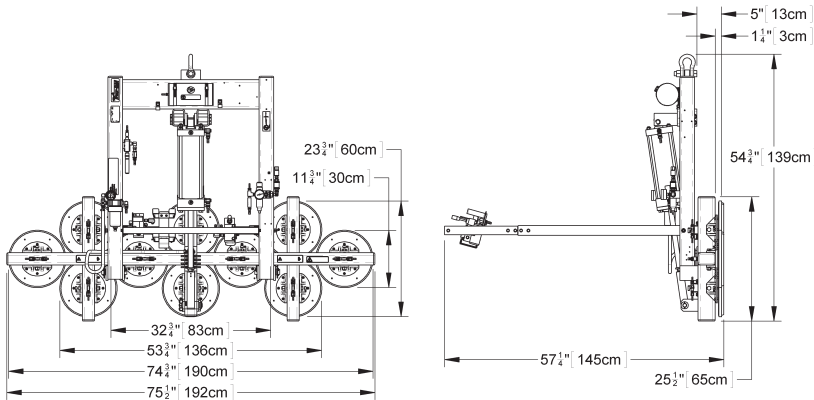
PT1010T	
Standard Pad Spread	33-3/4" x 74-3/4" [86 cm x 190 cm]
Number / Size of Pads	10 / 10" [25 cm] diameter vacuum pads with replaceable sealing rings
Maximum Load Capacity	1500 lbs [680 kg]
Lifter Weight	360 lbs [164 kg] with Air power system 425 lbs [193 kg] with AC power system 450 lbs [205 kg] with DC power system

PT1410T	
Standard Pad Spread	60-3/4" x 90-3/4" [154 cm x 230 cm]
Number / Size of Pads	14 / 10" [25 cm] diameter vacuum pads with replaceable sealing rings
Maximum Load Capacity	1500 lbs [680 kg]
Lifter Weight	545 lbs [248 kg] with Air power system 610 lbs [277 kg] with AC power system 635 lbs [289 kg] with DC power system



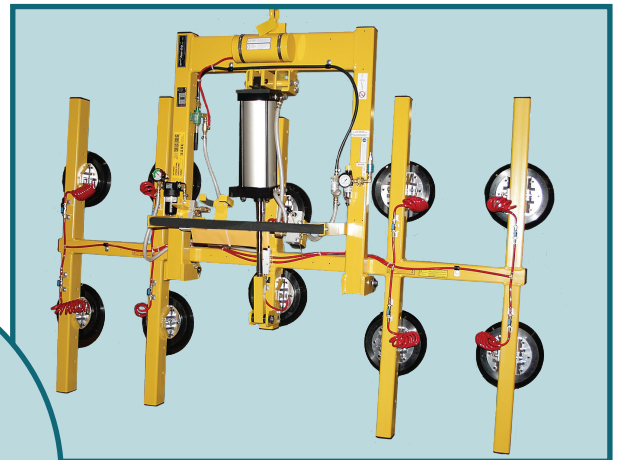
OPTIONAL CONTROL HANDLE EXTENSIONS (95857)

Control Handle Extensions provide a way to move the control handle a distance of 36" [91 cm] outward from the standard operator position. This enables the operator to maneuver the load and to use the tilt control while remaining safely outside the path of tilting materials. In this way, the operator can handle a very wide load conveniently and efficiently without ever risking contact with the load itself.



OPTIONAL PAD FRAME EXTENSION ARMS (95859)

Available for Powr-Grip's® PT10 vacuum lifters, Pad Frame Extension Arms allow the operator to reconfigure the vacuum pads, to support large or irregularly shaped loads. Simply remove a pad mount from its existing location, install the extension arm onto the end of pad frame tube, and move the mount outward to the extension arm. When all extension arms are installed, the overall width of a PT10 pad frame increases by approximately 2 feet [0.6 m]. Since Pad Frame Extension Arms are compatible with all existing PT10 vacuum lifters, new and existing customers alike are sure to benefit from the versatility and ease of use engineered into this option.



Pad Frame Extensions are sold in sets of 4. They must be installed as a matched set, to maintain the balance and symmetry of the vacuum lifter whenever possible.

