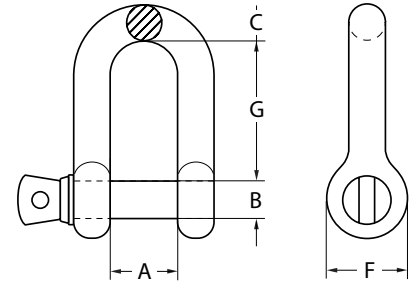




GRADE S SHACKLE (DEE TYPE, SCREW PIN)

Screw Pin Dee Shackles are most commonly used for lifting applications, providing connections to Chain, Wire Rope and other rated fittings within the Marine, Agricultural, Mining and Engineering Industries.



- Conforms to AS2741 manufactured from Grade "S" material in Dee configuration with Screw Pin hot dipped galvanized.
- Marked with work load limit in tonnes, quality grade, batch numbered, nominal size in millimetre and supplier identification.
- Proof tested to 2 x work load limit, with a minimum break force of 6 x work load limit.
- Suitable for lifting applications. Larger capacities on request.



| SIZE (mm) | WLL (tonnes) | WEIGHT (kg) | DIMENSIONS (mm) | | | | |
|--------------|-----------------|----------------|--------------------|----|----|-----|-----|
| | | | A | B | C | F | G |
| 6 | 0.5 | 0.05 | 12 | 8 | 6 | 17 | 22 |
| 8 | 0.75 | 0.09 | 13 | 10 | 8 | 21 | 26 |
| 10 | 1 | 0.14 | 17 | 11 | 10 | 25 | 32 |
| 11 | 1.5 | 0.17 | 18 | 13 | 11 | 27 | 37 |
| 13 | 2 | 0.29 | 21 | 16 | 13 | 33 | 41 |
| 16 | 3.2 | 0.63 | 27 | 19 | 16 | 40 | 51 |
| 19 | 4.7 | 1.02 | 32 | 22 | 19 | 48 | 60 |
| 22 | 6.5 | 1.53 | 37 | 25 | 22 | 54 | 71 |
| 25 | 8.5 | 2.41 | 43 | 29 | 25 | 60 | 81 |
| 29 | 9.5 | 3.09 | 46 | 32 | 29 | 67 | 90 |
| 32 | 12 | 4.31 | 52 | 35 | 32 | 76 | 100 |
| 35 | 13.5 | 6.01 | 57 | 38 | 35 | 84 | 113 |
| 38 | 17 | 8.03 | 60 | 44 | 38 | 92 | 124 |
| 44 | 25 | 13.79 | 73 | 51 | 44 | 110 | 146 |
| 51 | 35 | 20.42 | 83 | 57 | 51 | 127 | 171 |
| 57 | 42.5 | 26.06 | 95 | 63 | 57 | 143 | 181 |
| 63 | 55 | 38.8 | 105 | 70 | 63 | 152 | 203 |

We're Australia's leading online supplier of lifting equipment and partner with some of the most trusted brands in the world to deliver quality products at competitive prices.