

JAMSTANDS

Ultimate Support introduces the JamStands line of affordable musical accessories. This diverse assortment of products goes on to become a staple among retailers, musicians and audio professionals.

2008



STOP DREAMING. START DOING.

1979



ULTIMATE SUPPORT IS FOUNDED

Founder Darrell Schoening designs and builds the first A-frame speaker stands from salvaged hang glider tubing. Soon other musicians are begging for their own set. Ultimate Support Systems is born.

1977



FIRST KEYBOARD X-STAND

Ultimate introduce their first X-stand for keyboards. This simple design goes on to become an industry standard worldwide.

2022 CATALOG

1995



FIRST TRIPOD SPEAKER STAND

Ultimate release the first tripod speaker stands with a simple, compact design customers love. This is the first tripod speaker stand!

1983



THE FIRST ONE-HAND CLUTCH MIC STAND

The innovative MC-66 one-hand mic stand is introduced, bringing the world the first one-handed clutch microphone stand!

1986



THE FIRST COLUMN KEYBOARD STAND

The debut of the APEX column keyboard stand at the summer NAMM show takes the music industry by storm. Wins Best New Product award at winter NAMM.

LAPTOP STANDS
P. 3

MONITOR STANDS
P. 6

**GUITAR
ACCESSORIES**
P. 8

**KEYBOARD
ACCESSORIES**
P. 14

MIC STANDS
P. 19

**SPEAKER STANDS
AND ACCESSORIES**
P. 28

TABLET STANDS
P. 31

EQUIPMENT CARTS
P. 33

MUSIC STANDS
P. 35

RACK STANDS
P.38

**STUDIO
FURNITURE**
P. 38

LAPTOP STANDS

JS-LPT500
P. 4

JS-LPT400
P. 4

JS-LPT200
P.5

JS-LPT100
P.5

LAPTOP STANDS

ERGONOMIC COMPACT LAPTOP STAND JS-LPT500

- **Sturdy Features and Locking mechanisms ensure your laptop stays securely in place**
- **Thin feet can slide under mixers and keyboards**
- **Can be setup in multiple configurations and adjusted to ideal height**
- **Compact design folds flat and slides easily into included tote**



JS-LPT500 SPECS*:

- Product Name: JS-LPT500
- Part Number: 17852
- Weight: 4.95 lbs
- Max Usable Height: 13"
- Minimum Usable Height: 4"
- Folded Width: 10"
- Folded Height: 1.25"
- Folded Length: 13.25"
- Support Arm Width: 9.875"
- Support Arm Depth: 8"

FREE CARRYING BAG



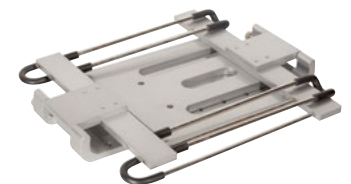
DOUBLE-TIER COMPACT LAPTOP STAND JS-LPT400

- **Multi-purpose stand: laptops, lighting controller, small mixer, CD player, DJ equipment, etc.**
- **Vented second tier included to hold hard drives, USB hubs, audio interfaces, and more**
- **Lightweight aluminum construction**
- **Folds down for easy and convenient transport and storage**
- **Weight Capacity: 20 lbs.**



JS-LPT400 SPECS*:

- Product Name: JS-LPT400
- Part Number: 17495
- Height: 12"
- Support Arms Depth: 9"
- Support Arms Width: 8.5"
- Second Tier Depth: 7.25"
- Second Tier Width: 6"
- Base Depth: 9.5"
- Base Width: 10.5"
- Weight Capacity: 20 lbs.
- Weight: 4.1 lbs.



LAPTOP STANDS

DOUBLE-TIER LAPTOP STAND JS-LPT200

- **Multi-purpose stand: laptops, lighting controller, small mixer, CD player, DJ equipment, etc.**
- **Vented accessory platform included to hold hard drives, USB hubs, audio interfaces, and more**
- **Five height positions**
- **Three width positions**



JS-LPT200 SPECS*:

- Product Name: JS-LPT200
- Part Number: 17359
- Five Height Positions (front): 6.5" - 11"
- Three Width Positions: 9.25", 10.25", 11.25"
- Platform Depth: 10.25"
- Accessory Platform Depth: 7.5"
- Base Depth: 12"
- Weight Capacity: 20 lbs.
- Weight: 4.5 lbs.

LAPTOP STAND WITH MULTI-USE SURFACE CLAMPS JS-LPT100

- **Multi-purpose stand: laptops, lighting controller, small mixer, CD player, DJ equipment, etc.**
- **Lightweight aluminum construction**
- **Folds down for easy and convenient transport and storage**
- **Weight Capacity: 20 lbs.**



JS-LPT100 SPECS*:

- Product Name: JS-LPT100
- Part Number: 17358
- Five Height Positions (front): 6.5" - 11"
- Three Width Positions: 9.25", 10.25", 11.25"
- Platform Depth: 10.25"
- Base Depth: 12"
- Weight Capacity: 20 lbs.
- Weight: 4.5 lbs.

MONITOR STANDS

JS-MS70
P.7

JS-MS70 +
P.7

MONITOR STANDS

MONITOR STAND JS-MS70

- Height-adjustable stand for studio monitors
- Locking pin ensures stable and accurate height positions
- Leveling floor spikes and rubber feet included
- Low-profile base can be easily positioned into tight spaces

JS-MS70 SPECS*:

- Product Name: JS-MS70
- Part Number: 17441
- Locking Heights: 32.25", 36.25", 40.25", 44.25"
- Platform Dimensions: 9" x 9" Base
- Dimensions: 17.25" x 17.25" x 17.25"
- Weight: 8.4 lbs.
- Weight Capacity: 50 lbs. per Stand



MONITOR STAND JS-MS70 PLUS

- Height-adjustable stand for studio monitors
- Locking pin ensures stable and accurate height positions
- Low profile base can be easily positioned into tight spaces
- Base folds for easier storage

JS-MS70 PLUS SPECS*:

- Product Name: JS-MS70+
- Part Number: 17982
- Locking heights: 32.25", 36.25", 40.25", 44.25"
- Platform Dimensions: 9" x 9"
- Effective Base Diameter: 25"
- Weight (individual): 7.45lbs
- Weight Capacity: 50 lbs. per stand



GUITAR ACCESSORIES



JS-TG101
P. 9

JS-HG102
P. 9

JS-HG103
P. 10

JS-AG100
P. 10

JS-AG75
P. 11

JS-GHG25
P. 11

JS-PB200
P. 12

JS-AS100
P. 12

JS-MPF100
P. 13

JS-FT100
P. 13

GUITAR ACCESSORIES

TUBULAR GUITAR STAND **JS-TG101**

- Steel tube stand for electric or acoustic guitars
- Durable powder-coated black finish
- Protective rubber at contact surfaces
- Adjustable from 23.75" to 28"
- Yoke folds down for easy storage and transport

JS-TG101 SPECS*:

- Product Name: JS-TG101
- Part Number: 16786
- Height: 23.75" - 28"
- Leg (Short): 5.5"
- Legs (Long): 12"
- Weight: 2 lbs.



DOUBLE HANGING GUITAR STAND **JS-HG102**

- Safely holds two electric, acoustic, or bass guitars
- Easy-to-use safety gate secures headstock
- Strong, durable steel construction
- Protective rubber at contact surfaces
- Ergonomic "Z" knob enables easy height adjustment
- Rubber feet ensures your guitars won't move on stage

JS-HG102 SPECS*:

- Product Name: JS-HG102
- Part Number: 17232
- Number of Guitars: 2
- Height: 34.5" - 43.5"
- Weight: 3.4 lbs.



GUITAR ACCESSORIES

TRIPLE HANGING GUITAR STAND **JS-HG103**

- Safely holds three electric, acoustic, or bass guitars
- Easy-to-use safety gate secures headstock
- Strong, durable steel construction
- Protective rubber at contact surfaces
- Ergonomic “Z” knob enables easy height adjustment
- Rubber feet ensure your guitars won’t move on stage

JS-HG103 SPECS*:

- Product Name: JS-HG103
- Part Number: 17246
- Number of Guitars: 3
- Height: 34.5" - 43.5"
- Weight: 3.8 lbs.



A-FRAME GUITAR STAND **JS-AG100**

- Heavy-duty steel frame holds electric and acoustic guitars
- Folds flat for convenient transport
- Three width settings
- Protective rubber at contact surfaces

JS-AG100 SPECS*:

- Product Name: JS-AG100
- Part Number: 16785
- Number of Guitars: 1
- Height: 23" - 31"
- Weight: 1.9 lbs.



GUITAR ACCESSORIES

A-FRAME WIRE GUITAR STAND **JS-AG75**

- **Heavy-duty steel stand securely holds both electric and acoustic guitars**
- **Folds flat for convenient transport or storage**
- **Protective rubber at contact surfaces**
- **Five width settings to accommodate different sized instruments**

- JS-AG75 SPECS*:**
- Product Name: JS-AG75
 - Part Number: 17354
 - Number of Guitars: 1
 - Height: 13.75" – 14.5"
 - Width: 12.25" – 7.13"
 - Weight: 2.25 lbs.



GUITAR HANGER **JS-GHG25**

- **Securely holds electric, acoustic, or bass guitars**
- **Wall mount hardware included**
- **Sturdy steel construction**
- **Soft, black rubber padding**
- **Yoke rotates to accommodate various headstock designs**

- JS-GHG25 SPECS*:**
- Product Name: JS-GHG25
 - Part Number: 18008
 - Length: 5.75"
 - Yoke Width (Internal): 2.25"
 - Mounting Disc Diameter: 3.25"
 - Weight: .35 lbs. (.16 kg)



GUITAR ACCESSORIES

SMALL PEDALBOARD JS-PB200

- Ergonomic small pedalboard
- Included soft case features inner mesh pocket
- Cable ports for organization and powered connection
- Built-in adjustable power supply clamp

JS-PB200 SPECS*:

- Part Number: 17986
- Pedal Surface Depth: 8.5"
- Front Height: 1.5"
- Rear Height: 3.25"
- Width: 15.75"
- Cable Port Width: .75"
- Pedal Surface Area: 149.62 sq. in.
- Weight: 3.6lbs.



GUITAR AMP STAND JS-AS100

- Five optimized height options with locking pins
- Sturdy A-frame design with locking cross brace
- Legs fold flat & arms release for easy storage & transport
- Load capacity: 150 lbs.

JS-AS100 SPECS*:

- Product Name: JS-AS100
- Part Number: 16790
- Capacity: 150 lbs.
- Height: 13.25" – 19.75"
- Arms Width: 10"
- Base Width: 19"
- Base Depth: 20.25"
- Weight: 8.6 lbs.



GUITAR ACCESSORIES

MUSIC PERFORMANCE CHAIR JS-MPF100

- Fully adjustable music performance chair
- Thick and comfortable padding on backrest and seat
- Quick and easy setup and teardown
- Convenient footrest with grip
- Holds up to 300 lbs

JS-MPF100 SPECS*:

- Product Name: JS-MPF100
- Part Number: 17980
- Maximum Height: 46.5"
- Width: 18"
- Depth: 17.5"
- Weight: 16lbs.
- Seat Height Adjustments:
21.25", 23.5", 25.875", 28", 30.25"
- Back Rest Depth Adjustments
(From front of seat): 14", 16", 18"
- Back Rest Height Adjustments
(From top of seat): 10", 12", 14", 16"



GUITAR FOOT STOOL JS-FT100

- Adjustable height with 4 fixed height positions
- Non-slip rubber pad and end caps
- Folds flat for convenient storage
- Ideal for classical guitarists

JS-FT100 SPECS*:

- Part Name: JS-FT100B
- Part Number: 16789
- Weight 1.7 lbs. (.8 kg)



KEYBOARD ACCESSORIES

JS-502D
P. 15

JS-500
P. 15

JS-XS300
P. 16

JS-MPS1
P. 16

JS-Z1000
P. 17

JS-XB100-B
P. 17

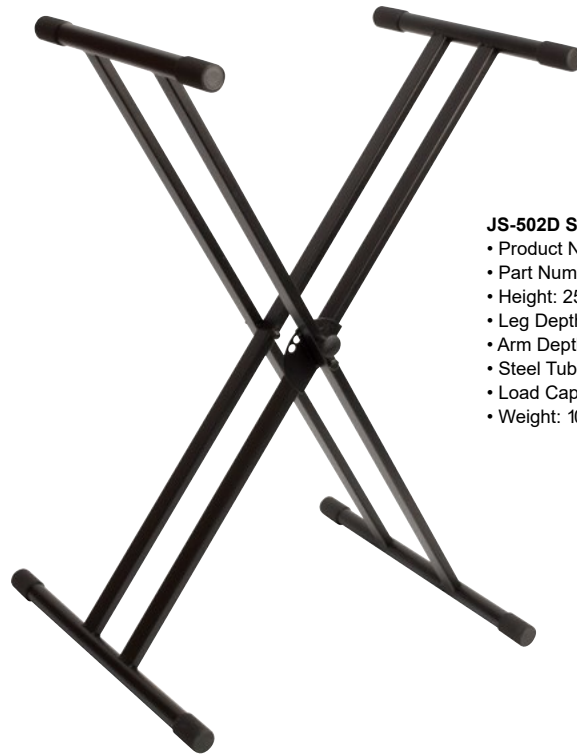
JS-MB100
P. 18

JS-SB100
P. 18

KEYBOARD ACCESSORIES

DOUBLE-BRACED KEYBOARD STANDS **JS-502D**

- Double-braced for heavier keyboards
- Five height positions
- Easy-to-adjust pull-style knob locks stand in place
- Constructed from strong steel tubing
- Load capacity: 125 lbs.



JS-502D SPECS*:

- Product Name: JS-502D
- Part Number: 17250
- Height: 25.5" – 38"
- Leg Depth: 19.25"
- Arm Depth: 15.75"
- Steel Tubing: 1"
- Load Capacity: 125 lbs.
- Weight: 10 lbs.

SINGLE-BRACED KEYBOARD STANDS **JS-500**

- Assembled single-braced X-style stand
- Strong, sturdy steel design
- Five height positions
- Folds flat for simple storage and transport
- Rubber end caps keeps instrument scratch-free
- Load capacity: 100 lbs.



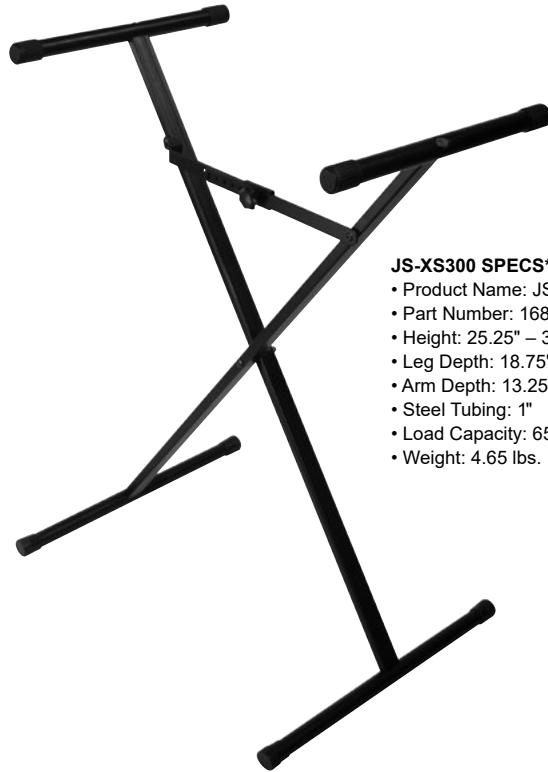
JS-500 SPECS*:

- Product Name: JS-500
- Part Number: 16808
- Height: 25.25" – 38.5"
- Leg Depth: 18.75"
- Arm Depth: 13.25"
- Steel Tubing: 1"
- Load Capacity: 100 lbs.
- Weight: 6.1 lbs.

KEYBOARD ACCESSORIES

SINGLE-BRACED KEYBOARD STANDS JS-XS300

- Double-braced for heavier keyboards
- Five height positions
- Easy-to-adjust pull-style knob locks stand in place
- Constructed from strong steel tubing
- 125 lbs. weight capacity



JS-XS300 SPECS*:

- Product Name: JS-XS300
- Part Number: 16837
- Height: 25.25" – 38.5"
- Leg Depth: 18.75"
- Arm Depth: 13.25"
- Steel Tubing: 1"
- Load Capacity: 65 lbs.
- Weight: 4.65 lbs.

MULTI-PURPOSE KEYBOARD STAND JS-MPS1

- Large enough for mixers, keyboards, DJ coffins, and more!
- Sturdy, steel design
- Height adjustable from 26" to 43"
- Width adjustable from 28.75" to 42"



JS-MPS1 SPECS*:

Product Name: JS-MPS1
Part Number: 17252
Capacity: 110 lbs.
Height: 26" – 43"
Table Width: 28.75" – 42"
Base Depth: 12.5"
Weight: 14.9 lbs.

KEYBOARD ACCESSORIES

ADJUSTABLE HEIGHT Z-STYLE KEYBOARD STAND **JS-Z1000**

- Optional Headphone Holder
- Adjustable feet and casters included
- Padded protection
- Width and height adjustable with extended height options
- Reinforced design

JS-Z1000 SPECS*:

- Product Name: JS-Z1000
- Part Number: 18592
- Height: 22.875" – 35.25"
- Width: 22.125" – 36.625"
- Top Arm Length: 16"
- Bottom Leg Length: 19.25"
- Load Capacity: 85 lbs.
- Weight: 13.35 lbs.



LARGE BENCH **JS-XB100-B**

- Thick padded seat
- Dual-locking pin system with four height positions
- Strong steel X-style frame

JS-XB100-B SPECS*:

- Product Name: JS-XB100-B
- Part Number: 18401
- Adjustable Positions: 4
- Height Range: 18.25" – 22.25"
- Seat Thickness: 2.5"
- Seat Dimensions: 23.5" x 11.5"
- Weight Capacity: 300 lbs.
- Weight: 11 lbs.



**EXTRA CAPACITY BENCH
HOLDS UP TO 300 LBS.**

KEYBOARD ACCESSORIES

MEDIUM BENCH JS-MB100

- Robust X-style steel frame
- Large, thick (2") padded seat
- 16 Possible Height Configurations (4 positions on each side)
- Dual-locking secure clutch system
- Folds flat for easy storage and transport

JS-MB100 SPECS*:

Product Name: JS-MB100
Part Number: 16801
Adjustable Positions: 4
Height Range: 18.5" – 22.5"
Seat Thickness: 2"
Seat Dimensions: 21" x 9.75"
Weight Capacity: 200 lbs.
Weight: 9.65 lbs.



SMALL BENCH JS-SB100

- Robust X-style steel frame
- Padded seat for comfort
- Three height positions
- Perfect bench for students and smaller musicians

JS-SB100 SPECS*:

Product Name: JS-SB100
Part Number: 17184
Adjustable Positions: 3
Height Range: 18" – 19.5"
Seat Thickness: 1"
Seat Dimensions: 16.5" x 12"
Weight Capacity: 200 lbs.
Weight: 6.85 lbs.



MIC STANDS

JS-BCM-50
P. 20

JS-MCTB200
P. 21

JS-MCFB100
P. 21

JS-MC100
P. 22

JS-MCFB6PK
P. 22

JS-MCTB50
P. 23

JS-MCFB50
P. 23

JS-MCRB100
P. 24

JS-TB100
P. 24

JS-FB100
P. 24

JS-KD55
P. 25

JS-KD50
P. 25

JS-DMS50
P. 26

JS-DMS75
P. 26

JS-MMS1
P. 27

JS-GN6
P. 27

JS-GN13
P. 27

JS-GN19
P. 27

JS-MC1
P. 27

JS-MC3
P. 27

JS-MC9
P. 27

MIC STANDS

EXTERNAL SPRING STYLE BROADCAST MIC STAND **JS-BCM-50**



- **Dual Exterior Spring Design**
- **Ergonomic Adjust Knob**
- **Sturdy Table Clamp System**
- **Included Adapters and a Mic Clip**



- JS-BCM-50 SPECS*:**
- Product Name: JS-BCM-50
 - Part Number: 18590
 - Max Height 38"
 - Radius 36"
 - Max Arm Width: 2.375"
 - Drop Down Boom Length: 2.5" (top to bottom)
 - Springs: Dual Exterior
 - Load Capacity: 2.6 lbs.
 - Weight: 1.75 lbs.



**STOP DREAMING.
START DOING.**

MIC STANDS

TRIPOD MIC STAND WITH TELESCOPING BOOM **JS-MCTB200**

- Telescoping boom arm adjusts from 19.5" to 34.5"
- Strong, reliable tripod base
- Metal die-cast housing
- Standard 5/8" threading
- Non-slip rubber feet
- Strong, tip-resistant tripod base

TRIPOD MIC STAND WITH FIXED BOOM **JS-MCFB100**

- 31.5" Fixed-length boom arm for precise positioning
- Strong, tip-resistant tripod base
- Scratch-resistant powder coat finish
- Die-cast leg housing for dependable base support
- Non-slip rubber feet



JS-MCTB200 SPECS*:

- Product Name: JS-MCTB200
- Part Number: 16792
- Stand Height: 40"-68"
- Boom Length: 19.5"-34.5"
- Base Diameter: 27"
- Threading: 5/8"
- Weight: 4.8 lbs.



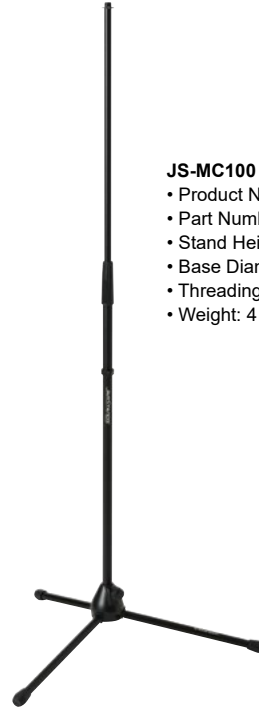
JS-MCFB100 SPECS*:

- Product Name: JS-MCFB100
- Part Number: 16791
- Boom Length: 31.5"
- Height: 40.25" – 68"
- Threading: 5/8"
- Weight: 5.35 lbs.

MIC STANDS

TRIPOD MIC STAND JS-MC100

- Height adjustable
- Strong, tip-resistant tripod base
- Scratch-resistant, powder-coated black finish
- Die-cast leg housing for dependable base support



- JS-MC100 SPECS*:**
- Product Name: JS-MC100
 - Part Number: 16807
 - Stand Height: 37.5" - 65"
 - Base Diameter: 28"
 - Threading: 5/8"
 - Weight: 4 lbs.

6-PACK TRIPOD MIC STAND BUNDLE JS-MCFB6PK

- Six (6) tripod microphone stands
- Each stand features a non-detachable 31" boom arm
- Handy carrying bag included for FREE!
- Standard 5/8" threading
- Non-slip rubber feet
- Strong, tip-resistant tripod base



- JS-MCFB6PK SPECS*:**
- Product Name: JS-MCFB6PK
 - Part Number: 17461
 - Number of Stands: Six (6)
 - Boom Length: 31"
 - Height: 39" - 64"
 - Threading: 5/8"
 - Stand Base Diameter: 26"
 - Weight (Per Stand): 4.15 lbs.

MIC STANDS

SMALL TRIPOD MIC STAND WITH TELESCOPING BOOM **JS-MCTB50**

- Telescoping boom arm adjusts from 16.5" to 29"
- Metal die-cast housing
- Standard 5/8" threading
- Short height for hard-to-get-to spaces
- Non-slip rubber feet
- Strong, tip-resistant tripod base



- JS-MCTB50 SPECS*:**
- Product Name: JS-MCTB50
 - Part Number: 16796
 - Boom Length: 16.5" – 29"
 - Height: 16" – 23"
 - Threading: 5/8"
 - Weight: 3.85 lbs.

SMALL TRIPOD MIC STAND WITH FIXED **JS-MCFB50**

- 24" Fixed-length boom arm
- Metal die-cast housing
- Standard 5/8" threading
- Short height for hard-to-get-to spaces
- Non-slip rubber feet
- Strong, tip-resistant tripod base



- JS-MCFB50 SPECS*:**
- Product Name: JS-MCFB50
 - Part Number: 16795
 - Boom Length: 24"
 - Height: 16" – 23"
 - Threading: 5/8"
 - Weight: 3.65 lbs.

MIC STANDS

ROUND BASED MIC STAND **JS-MCRB100**

- Heavy die-cast traditional round base
- Heavy-duty steel construction
- Height adjustable
- Scratch-resistant, powder-coated black finish



JS-MCRB100 SPECS*:

- Product Name: JS-MCRB100
- Part Number: 16793
- Stand Height: 33" – 60.5"
- Base Diameter: 9.75"
- Threading: 5/8"
- Weight: 7.8 lbs.

MIC BOOMS

- Standard 5/8" threading
- Comfortable adjustment dial and knob
- Cable management clip included
- Metal housing for superior durability



JS-TB100 SPECS*:

- Product Name: JS-TB100
- Part Number: 16798
- Boom Length: 19.5" - 34.5"
- Threading: 5/8"
- Weight: 1.3 lbs.



JS-FB100 SPECS*:

- Product Name: JS-FB100
- Part Number: 16797
- Boom Length: 32.5"
- Threading: 5/8"
- Weight: 1.2 lbs.

MIC STANDS

KICK DRUM/ GUITAR AMP MIC STAND **JS-KD55**

- **Low-profile mic stand for tight spaces**
- **Heavy-duty die-cast base**
- **Angle-adjustable base for precise positioning**
- **Fixed boom arm provides even greater flexibility**

- JS-KD55 SPECS*:**
- Product Name: JS-KD55
 - Part Number: 17451
 - Height: 15.5" – 21"
 - Boom Length: 16.5"
 - Base Length: 6.75"
 - Weight: 5.6 lbs.



Kick Drum/ Guitar Amp Mic Stand **JS-KD50**

- **Low-profile mic stand for kick drums and guitar amps**
- **Heavy-duty die-cast base**
- **Fixed boom arm provides precise positioning**
- **Scratch-resitant, powder-coated black finish**
- **Standard 5/8" threading**

- JS-KD50 SPECS*:**
- Product Name: JS-KD50
 - Part Number: 17231
 - Height: 12.25" – 17"
 - Boom Length: 19.5"
 - Base Dimensions: 6" x 3.75"
 - Threading: 5/8"
 - Weight: 5.75 lbs.



MIC STANDS

WEIGHTED BASE DESKTOP MIC STAND **JS-DMS50**

- Low-profile mic stand for tight spaces
- Heavy-duty die-cast base
- Angle-adjustable base for precise positioning
- Fixed boom arm provides even greater flexibility



JS-DMS50 SPECS*:

- Product Name: JS-DMS50
- Part Number: 17310
- Height: 8" – 12.25"
- Base Diameter: 7"
- Thread Size: 5/8"
- Weight: 3.75 lbs.

GOOSENECK DESKTOP MIC STAND **JS-DMS75**

- Low-profile mic stand for kick drums and guitar amps
- Heavy-duty die-cast base
- Fixed boom arm provides precise positioning
- Scratch-resisitant, powder-coated black finish
- Standard 5/8" threading



JS-DMS75 SPECS*:

- Product Name: JS-DMS75
- Part Number: 17311
- Height: 13.5"
- Gooseneck Length: 12"
- Base Diameter: 7"
- Threading: 5/8"
- Weight: 4 lbs.

MIC STANDS

MINI TRIPOD DESKTOP MIC STAND JS-MMS1

- Small, durable desktop mic stand
- Microphone clip included
- Perfect for desktop recording and iPod casting
- Scratch-resistant powder-coated finish
- Tripod base for stability



- JS-MMS1 SPECS*:**
- Product Name: JS-MMS1
 - Part Number: 17259
 - Height: 7.5" – 10"
 - Base Diameter: 7"
 - Weight: .65 lbs.



MICROPHONE ACCESSORIES

JS-GN6 item# 17253
JS-GN13 item# 17254
JS-GN19 item# 17255

Sometimes you need a little flexibility when it comes to mic placement, and that's where the gooseneck comes in! Available in 6", 13", and 19" lengths, there's always a gooseneck that's perfect for your situation.

JS-MC1
item# 17233

Clothespin-style
Spring-loaded
Microphone Clip
with 5/8" Thread



JS-MC3
item# 17243

Traditional
Microphone Clip
with 5/8" Thread



JS-MC9
item# 17237

Heavy-duty
Rubber, Smaller
Microphone Clip
with 5/8" Thread



JS-GN6



JS-GN13



JS-GN19

JAMSTANDS SERIES SPEAKER STANDS AND ACCESSORIES

JS-TS50-2
P. 29

JS-SP50
P. 29

JS-WMB100
P. 30

SPEAKER STANDS AND ACCESSORIES

PAIR OF TRIPOD SPEAKER STANDS **JS-TS50-2**

- Long-lasting aluminum construction
- Durable powder-coated finish
- Tripod base is very stable and sturdy
- Stand is height-adjustable
- Carrying bag included
- Holds up to 120 lbs.



JS-TS50-2 SPECS*:

- Product Name: JS-TS50-2
- Part Number: 17318
- Height: 46.5" – 81.5"
- Base Diameter: 47"
- Load Capacity: 120 lbs.
- Telescoping Tube: 1 3/8"
- Weight (Per Stand): 4.2 lbs.

SPEAKER POLE **JS-SP50**

- Heavy-duty construction
- Height adjustable from 31.5" to 52.5"
- Friction locking knob with security pin
- 1 3/8" upper and lower tubes

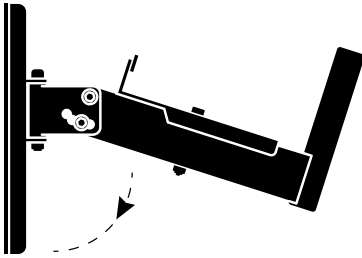


JS-SP50 SPECS*:

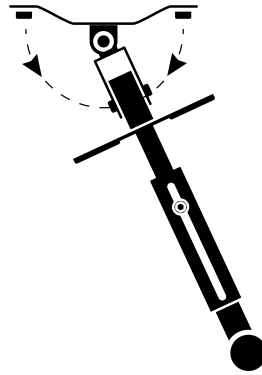
- Product Name: JS-SP50
- Part Number: 17509
- Height: 31.5" – 52.5"
- Upper Tube Size: 1.375"
- Lower Tube Size: 1.375"
- Weight Rating: 110 lbs.
- Weight: 3 lbs.

SPEAKER STANDS AND ACCESSORIES

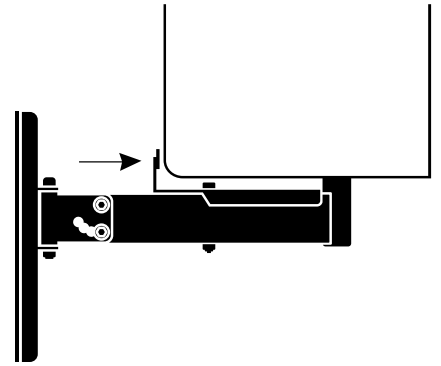
WALL MOUNTABLE SPEAKER STAND JS-WMB100



Three vertical angle settings for increased versatility.



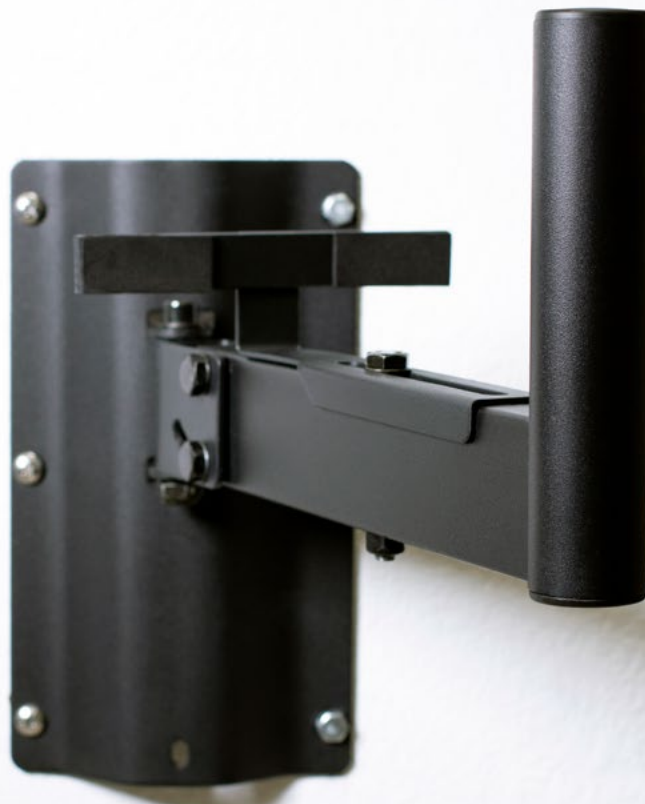
Speakers can be angle adjusted from left to right for flexible placement.



Adjustable bracket helps maintain speaker placement.

JS-WMB100 SPECS*:

- Product Name: JS-WMB100
- Part Number: 18603
- Mounting Plate: 5.5" x 10"
- Arm Length: 12"
- Speaker Clamp: 6" - 9.25"
- Speaker Pole Height: 4.75"
- Load Capacity: 100 lbs.
- Weight: 5 lbs.



JAMSTANDS SERIES TABLET STANDS

JS-MNT101
P. 32

TABLET STANDS

UNIVERSAL IPAD HOLDER **JS-MNT101**

- Securely holds most standard tablet sizes
- Connects to microphone stand pole
- Highly adjustable to suit viewing needs
- Secures in portrait or landscape view



JS-MNT101 item# 18009
Universal Tablet Holder

JS-MNT101 Features:

- Securely holds all iPads including iPad mini
- Connects to microphone stand pole
- Highly adjustable to suit viewing needs
- Secures in portrait or landscape view



**STOP DREAMING.
START DOING.**

JAMSTANDS SERIES EQUIPMENT CARTS



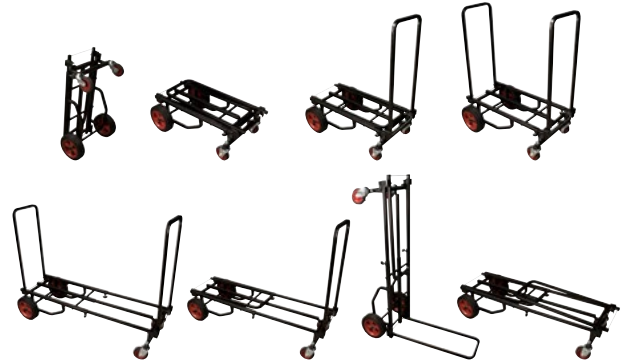
JS-KC90
P. 34

JS-KC80
P. 34

EQUIPMENT CARTS

MEDIUM EQUIPMENT CART JS-KC90

- Easily transforms into eight different configurations
- Transport your PA system, guitars, DJ equipment, and more
- Wheels are made of a solid material that will not go flat
- Locking front caster for secure loading and unloading
- Strong, light-weight steel design that is powder coated for protection
- Easy to fold up for convenient transport and storage
- Weight capacity of 300 lbs.



JS-KC90 SPECS*:

- Product Name: JS-KC90
- Part Number: 17436
- Capacity: 300 lbs.
- Configurations: 8 Variations
- Finish: Powder Coat, Black
- Length: 27.5" - 44.25"
- Width: 17"
- Height: 24"
- Weight: 26 lbs.

SMALL EQUIPMENT CART JS-KC80

- Easily transforms into eight different configurations
- Transport your PA system, guitars, DJ equipment, and more
- Wheels are made of a solid material that will not go flat
- Locking front caster for secure loading and unloading
- Strong, light-weight steel design that is powder coated for protection
- Easy to fold up for convenient transport and storage
- Weight capacity of 200 lbs.



JS-KC80 SPECS*:

- Product Name: JS-KC80
- Part Number: 17437
- Capacity: 200 lbs.
- Configurations: 8 Variations
- Finish: Powder Coat, Black
- Length: 25.25" - 40.25"
- Width: 14.25"
- Height: 24"
- Weight: 16 lbs.

JAMSTANDS SERIES MUSIC STANDS



JS-MS200
P. 36

JS-CMS100
P. 36

JS-CMS100+
P. 37

MUSIC STANDS

ALLEGRO MUSIC STANDS JS-MS200

- Compact, portable sheet music stand
- Height-adjustable telescoping tripod stand
- Two telescoping tubes
- Angle-adjustable sheet music platform
- Two sheet music security arms to hold music in place

JS-MS200 SPECS*:

- Product Name: JS-MS200
- Part Number: 16794
- Height: 38" – 57"
- Platform Dimensions: 19" (W) x 13" (H)
- Tripod Diameter: 25"
- Weight: 6.65 lbs.



COMPACT MUSIC STANDS JS-CMS00

- Long-lasting steel design
- Angle-adjustable sheet music platform
- Height adjustable from 38" to 57"
- Non-slip rubber feet
- Strong, tip-resistant tripod base

JS-CMS100 SPECS*:

- Product Name: JS-CMS100
- Part Number: 16803
- Height: 27.5" – 54.5"
- Platform Dimensions: 20" (W) x 11.5" (H)
- Folded Dimensions: 21" (L) x 3.5" (W) x 3" (D)
- Weight: 2.5 lbs. (1.13 kg)



MUSIC STANDS

COMPACT MUSIC STAND WITH BAG JS-CMS100+

- Compact, portable sheet music stand
- Height-adjustable telescoping tripod stand
- Two telescoping tubes
- Angle-adjustable sheet music platform
- Two sheet music security arms to hold music in place

JS-CMS100+ SPECS*:

- Product Name: JS-CMS100+
- Part Number: 16803
- Height: 27.5" – 54.5"
- Platform Dimensions: 19.5" (W) x 11.5" (H)
- Folded Dimensions: 20.75" (L) x 3.5" (W) x 2.5" (D)
- Weight: 2.2 lbs. (.99 kg)



**STOP DREAMING.
START DOING.**

JAMSTANDS SERIES RACK & STUDIO FURNITURE



JS-SRR100
P. 39

JS-SW300
P. 39

JAMSTANDS SERIES RACK & STUDIO FURNITURE

ROLLING RACK STAND JS-SRR100

- More surface area than the competition
- Sturdy welded frame construction
- Open design for extra leg room
- Second tier
- Sleek z-shaped design
- Sliding keyboard tray



JS-SRR100 SPECS*:

- Product Name: JS-SRR100
- Part Number: 16804
- Rack Spaces: 12U Over 9U
- Height: 45"
- Base Dimensions: 22" (W) x 21.5" (D)
- Weight: 25.8 lbs.

STUDIO WORKSTATION JS-SW300

- More surface area than the competition
- Sturdy welded frame construction
- Open design for extra leg room
- Second tier
- Sleek z-shaped design
- Sliding keyboard tray



JS-SW300 SPECS*:

- Part Number: 17985
- Total workable surface area: 2335 sq. in.
- Weight capacity: 175 lbs.
- Finish: Black Laminate
- Height:- Main Surface: 29.5" - Keyboard Surface: 27.1"- 2nd Tier Surface: 40.3"
- Width: - Main: 48" - Keyboard: 42" - 2nd Tier: 42"
- Depth: - Main: 24" - Keyboard: 15" - 2nd Tier: 18"

1998



V-STAND AND TELELOCK INTRODUCED

The V-stand is born and also, the TeleLock speaker stand, descendant of the Utilock, are introduced

2022
Catalog

1993



FIRST KEYBOARD X-STAND

Ultimate introduce their first X-stand for keyboards. This simple design goes on to become an industry standard worldwide.

Over 40 Years
of Innovation

2016



STUDIO FURNITURE

Ultimate Support introduces the Nucleus line of studio furniture, ushering in a new era of affordable furniture solutions for musicians.

2015



ULTIMATE ACOUSTICS

The Ultimate Acoustics line of acoustic treatment products launches; offering reasonably priced, foam based products, and a wide variety of treatment types and solutions.

2018



MODULAR DEVICE STANDS

Ultimate Support Introduces the MDS Series of Modular Device Stands. These affordable, versatile stands are embraced by musicians everywhere, and the stands are nominated for a TEC Award.



ultimatesupport.com
800.525.5628