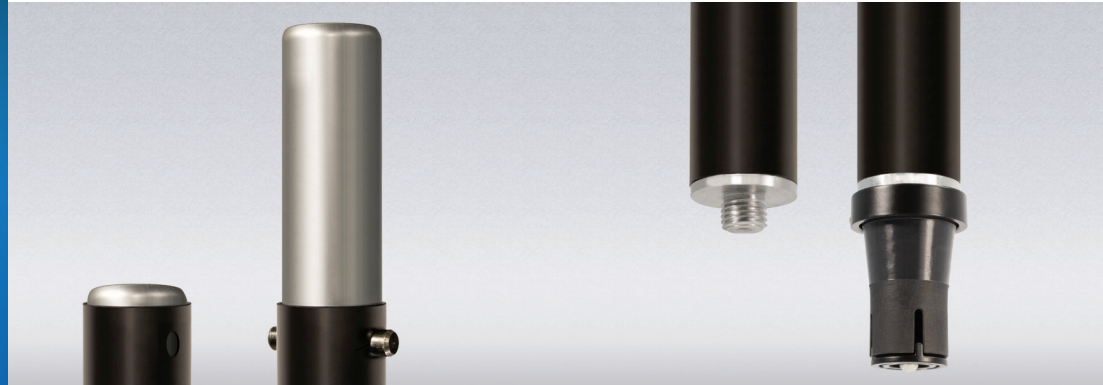


TELELOCK® SERIES SPEAKER POLE SP-90

The new SP-90 speaker poles feature an expanding cylinder system that will firmly fit multiple speaker sockets from 1- 3/8" to 1-1/2" diameter. Using a 2mm hex wrench, the adapter can also be removed to provide standard M20 threading, allowing your SP-90 speaker pole to be a truly universal solution.



ADJUSTABLE SPEAKER ADAPTER

The top of the speaker pole has an adapter that fits both a 1.5" & 1.375" speaker mount.

UNIVERSAL SUBWOOFER ADAPTER

The bottom of the speaker pole has a universal fit adapter & threaded connector



TELELOCK® LIFT ASSIST

The Patented TeleLock collar provides secure assistance as you raise, lower and adjust the stand height.

OVER-SIZE TUBING

Our speaker poles are made with over-sized tubing for greater strength and dependability.

SP-90 SPECS

- Part Number: 17653
- Height Range: 36.5" - 57.2" (928 mm - 1454 mm)
- Upper Tube Size: 1.5" (38.10 mm)
- Lower Tube Size: 1.75" (44.45 mm)
- Weight Rating: 75 lbs. (34.02 kg)
- Weight: 3.85 lbs (1.75 kg)