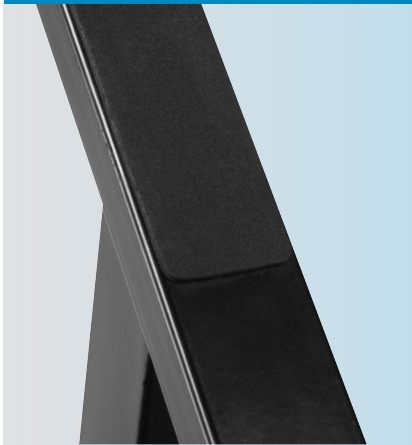


JS-AS100 ITEM# 16790

Elevating your amp serves two purposes: First, it decouples your amp from the floor. Second, it puts your amp at a better height for hearing your amp. The JS-AS100 Guitar Amp Stand easily manages both tasks, supporting amps weighing up to 150 lbs. It has five height options to put the amp at the best height for your listening situation and rubber pads on the support arms help secure your amp.

GUITAR AMP STAND



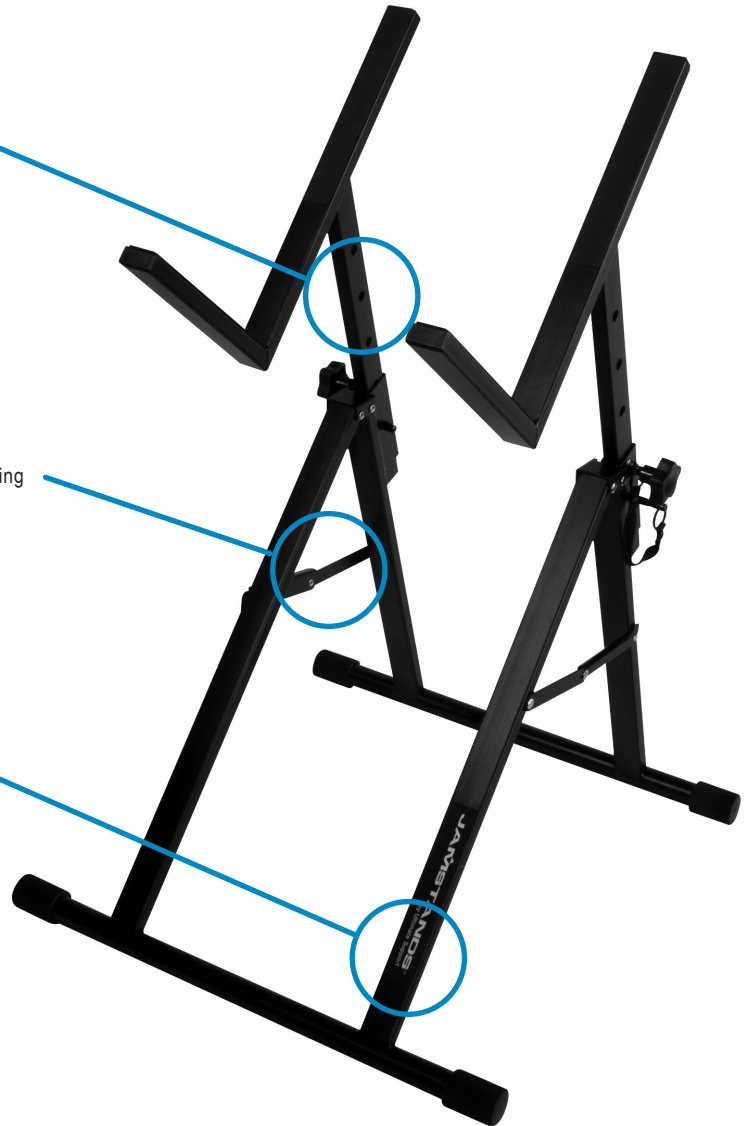
Five optimized height options with locking pins

Sturdy A-frame design with locking cross brace

Legs fold flat and arms release for easy storage and transport.

SPECS

- Product Name: JS-AS100
- Part Number: 16790
- Capacity: 150 lbs. (68 kg)
- Height: 13.25" – 19.75" (336mm – 502mm)
- Arms Width: 10" (254mm)
- Base Width: 19" (482mm)
- Base Depth: 20.25" (514mm)
- Weight: 8.6 lbs. (3,9 kg)



Phone: 1-800-525-5628
Fax: 970.776.1941
Web: www.ultimatesupport.com
R. 3, 11/10/22, 1S-JAM-JS-AS100