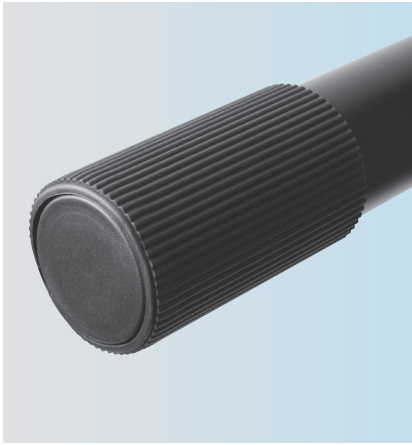


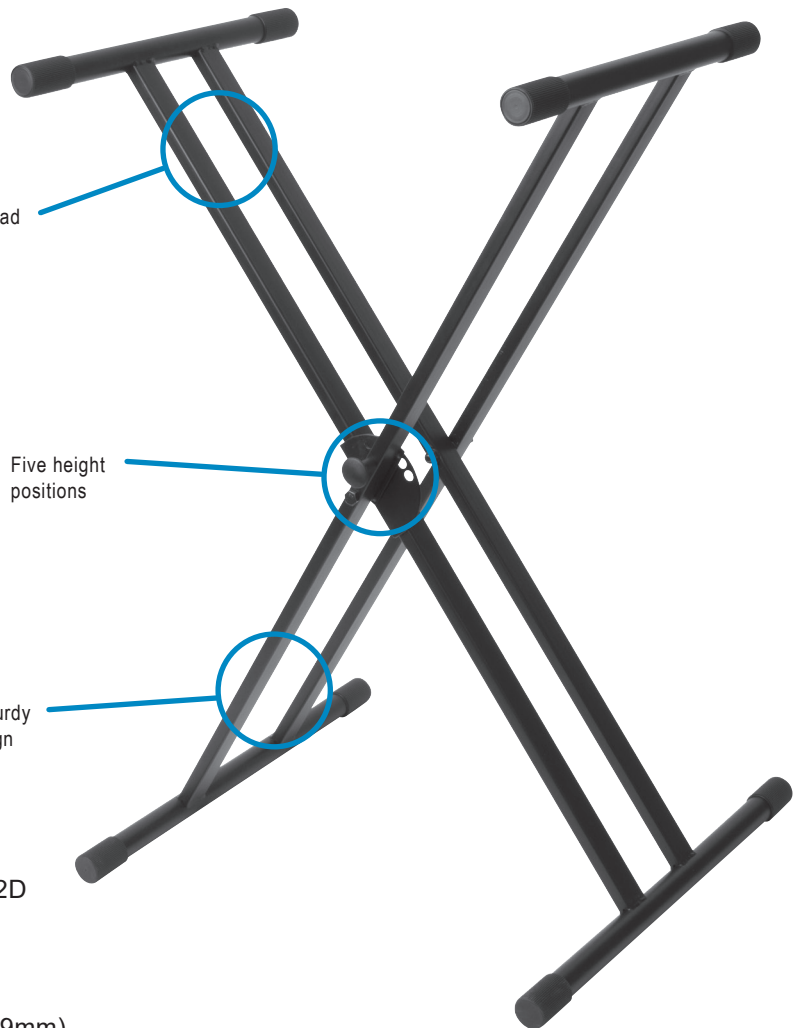
## JS-502D ITEM# 17250

The JS-502D is a sturdy, lightweight, double-braced, X-style keyboard stand for the discerning player on a tight budget. The JS-502D is easily adjustable to sitting or standing heights thanks to the large height-adjustment knob. The JS-502D double-braced, X-style keyboard stand fits a wide variety of playing situations, and folds flat for easy transport and storage. The JS-502D ships assembled.

## DOUBLE BRACE X-STYLE KEYBOARD STAND



125 lbs. load capacity



Five height positions

Strong, sturdy steel design

### SPECS

- Product Name: JS-502D
- Part Number: 17250
- Height: 25.5" – 38"  
(648mm – 965mm)
- Leg Depth: 19.25" (489mm)
- Arm Depth: 15.75" (400mm)
- Steel Tubing: 1" (25mm)
- Load Capacity: 125 lbs. (57 kg)
- Weight: 10 lbs. (4,5 kg)



Phone: 1-800-525-5628  
Fax: 970.776.1941  
Web: [www.ultimatesupport.com](http://www.ultimatesupport.com)  
R. 2, 11/10/22, 1S-JAM-JS-502D