

GDS404+ GAS DETECTION SYSTEM

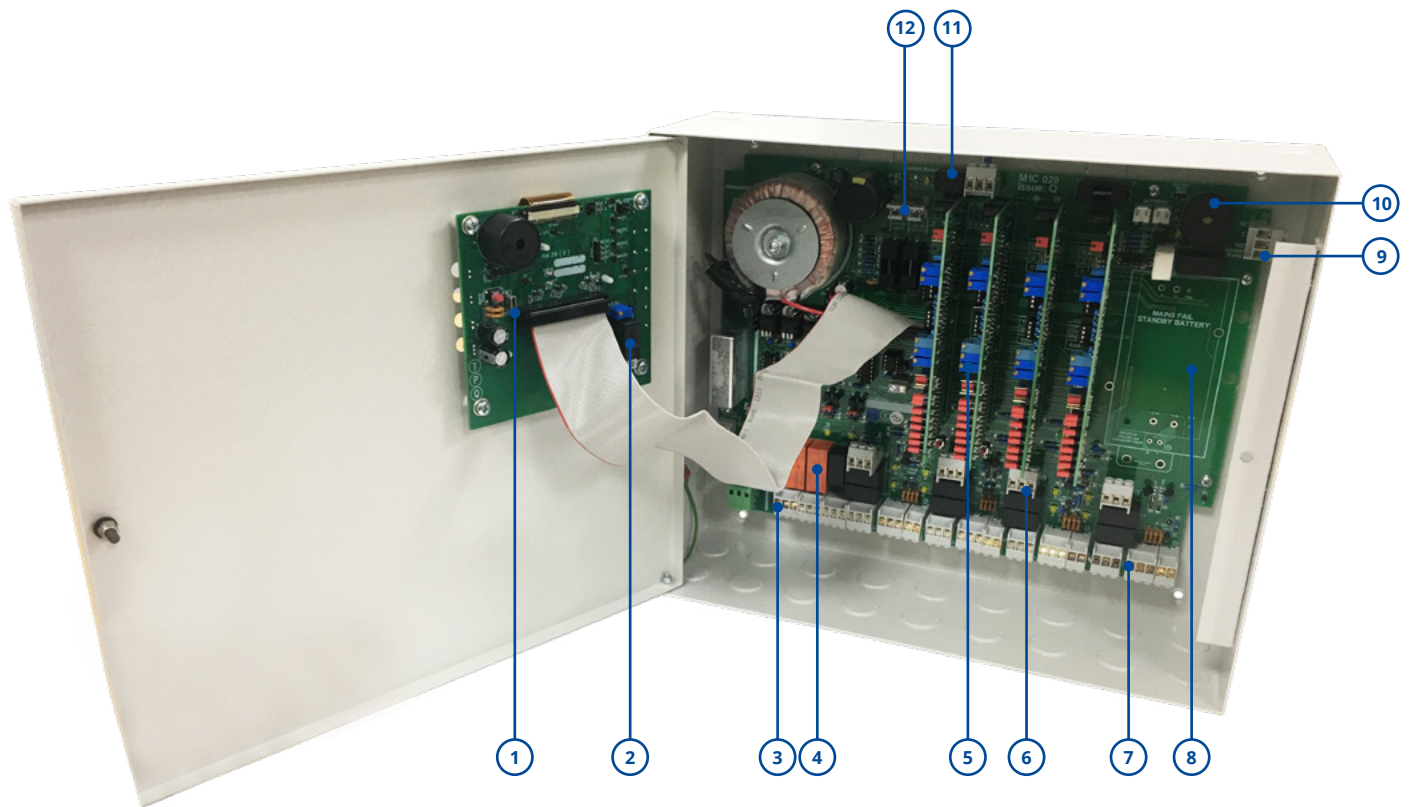


PRODUCT DESCRIPTION:

GDS404+ is an easily configurable, wall mounted or 19" rack control system that supports up to four channels of gas detection. The versatile configuration approach enables you to take control of your safety system and configure it to meet your needs for a wide range of applications.

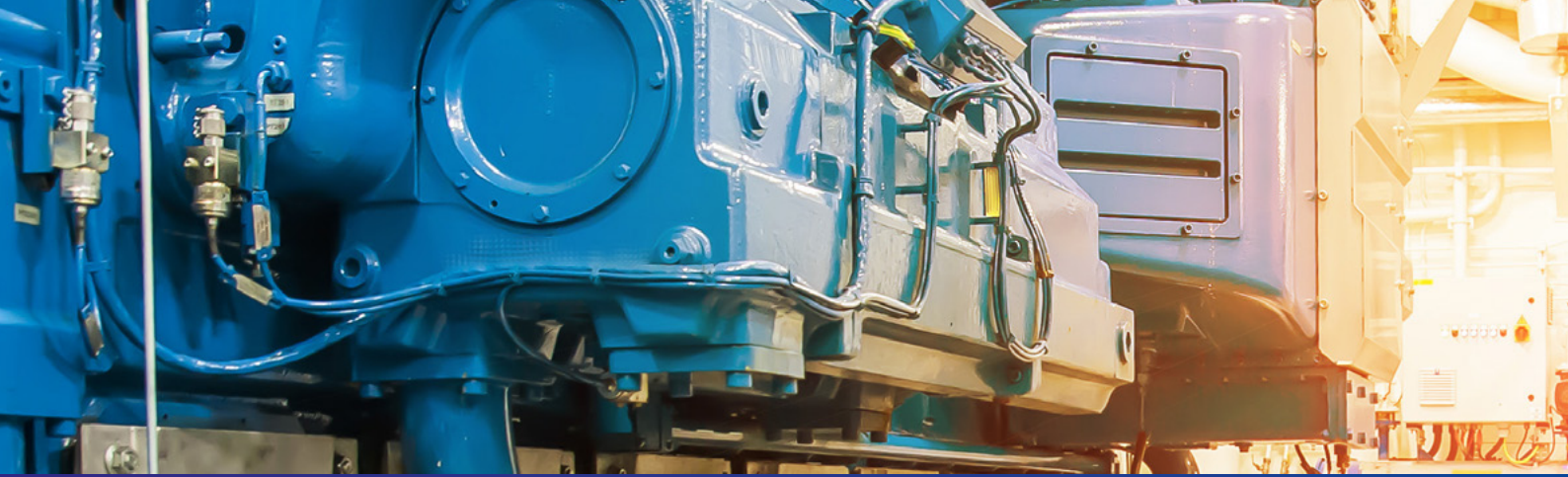


GDS404+ FEATURES

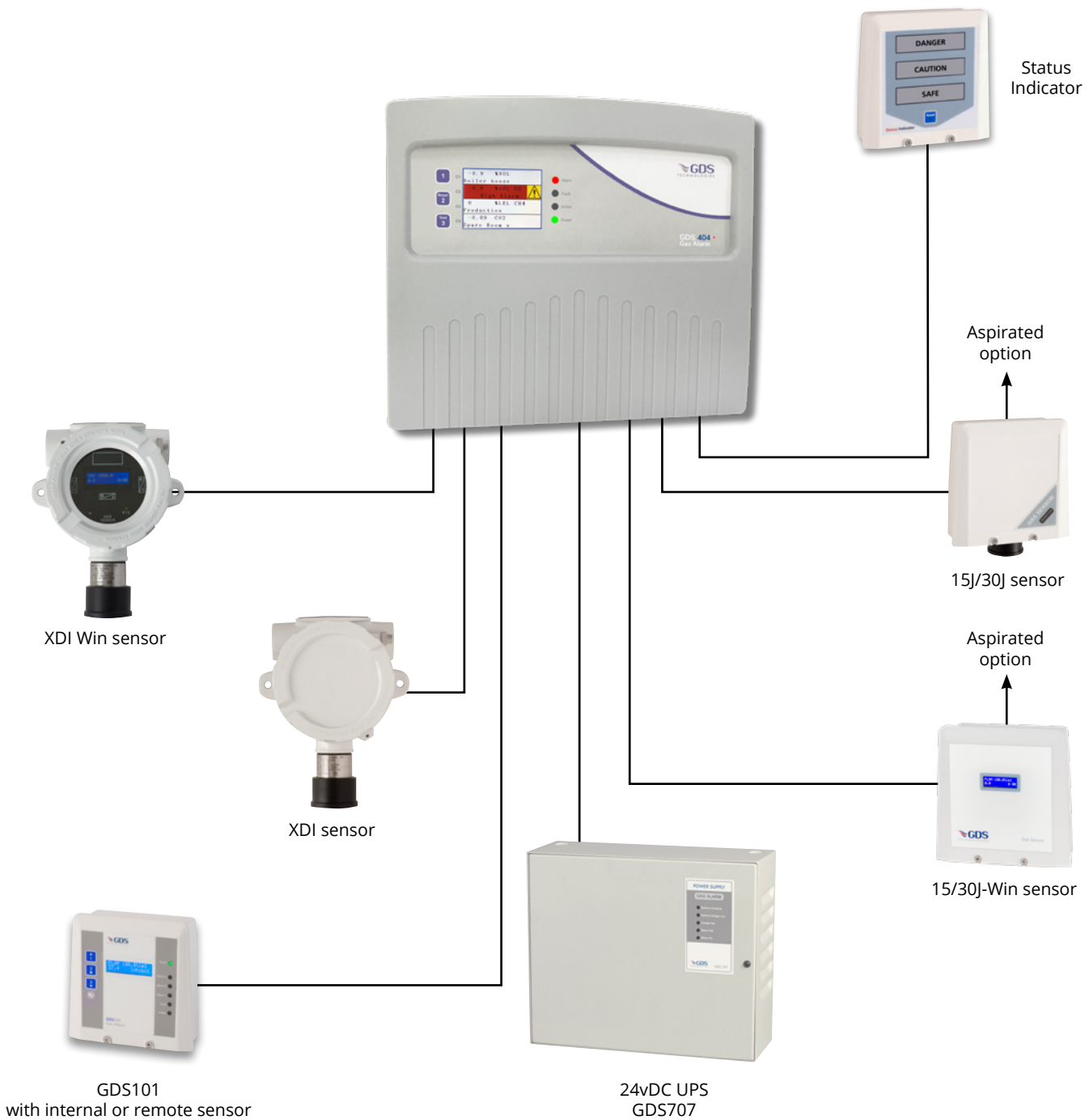


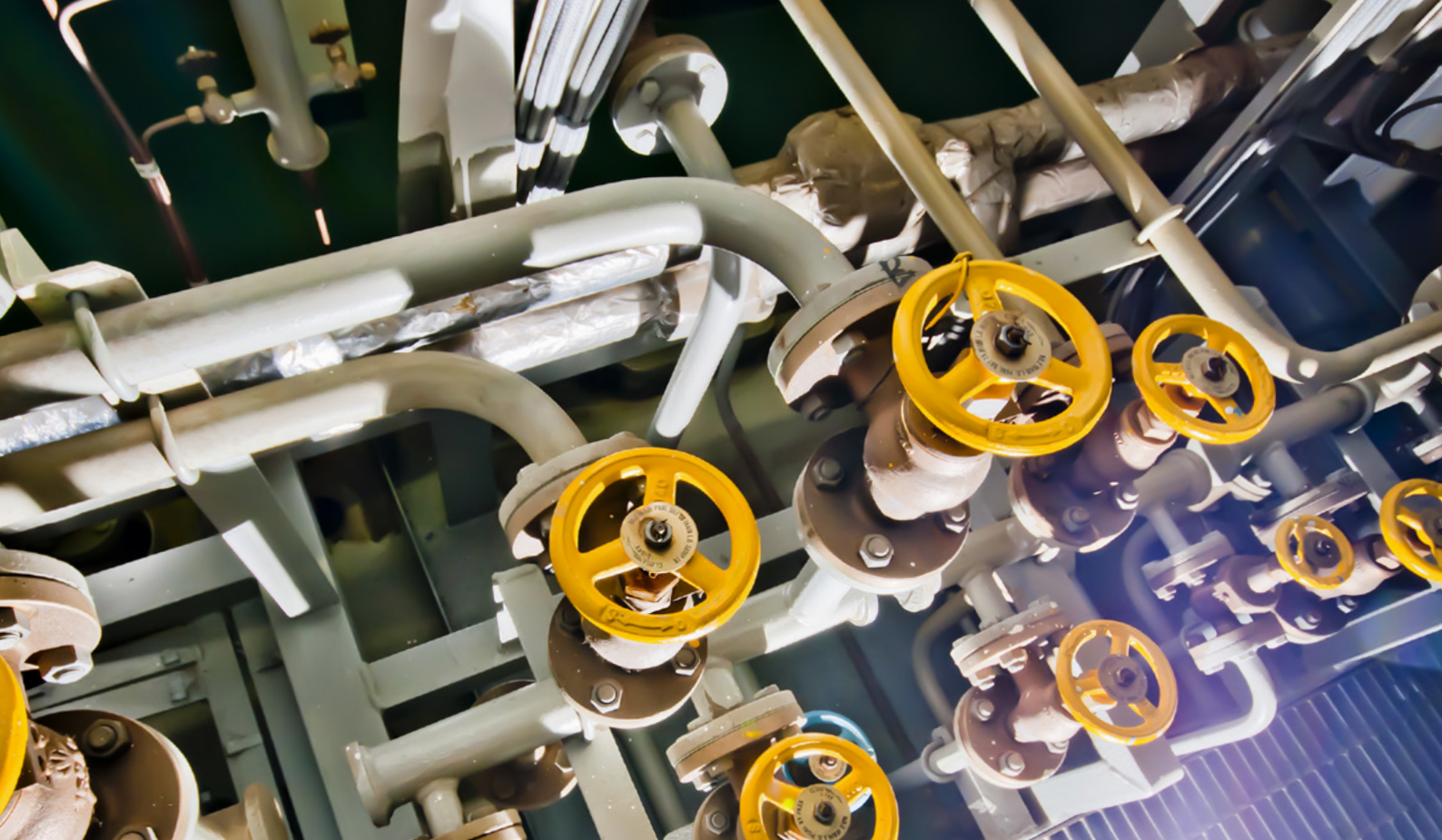
GDS404+

1	USB Port	7	Sensor Terminals
2	Third Alarm Relay	8	Optional Standby Batteries
3	AC Input	9	Global Relay Alarm
4	Hi, Lo and Fault Global Relays	10	Sounder
5	Plug in Alarm Channel Cards	11	Inhibit Relay
6	Hi, Lo Channel Relays	12	DC Input/ Output



GDS404+ CONTROLLER CONFIGURATION





GASES AND RANGES

Gas	Relative Density Air = 1	Units	Standard Range	Alarm Level 1	Alarm Level 2
Oxygen (O ₂)	1.105	% Vol	0-25%	19%	17%
Carbon Monoxide (CO)	0.96	ppm	0~200ppm	20ppm	100ppm
Sulphur Dioxide (SO ₂)	2.26	ppm	0~5ppm	0.5ppm	1ppm
Nitric Oxide (NO)	1.03	ppm	0~10ppm	2ppm	3ppm
Nitrogen Dioxide (NO ₂)	2.62	ppm	0~5ppm	0.5ppm	1ppm
Chlorine (Cl)	2.41	ppm	0~5ppm	0.3ppm	0.5ppm
Chlorine Dioxide (ClO ₂)	2.33	ppm	0~1ppm	0.1ppm	0.3ppm
Hydrogen (H ₂)	0.06	ppm	0~2000ppm	250ppm	500ppm
Hydrogen Cyanide (HCN)	0.93	ppm	0~10ppm	0.9ppm	4.5ppm
Hydrogen Sulphide (H ₂ S)	1.18	ppm	0~50ppm	5ppm	10ppm
Hydrogen Chloride (HCl)	1.26	ppm	0~10ppm	1ppm	5ppm
Ammonia (NH ₃)	0.58	ppm	0~100ppm	25ppm	35ppm
Ozone (O ₃)	1.66	ppm	0~1ppm	0.1ppm	0.2ppm
Hydrogen Fluoride (HF)	0.7	ppm	0~10ppm	1.8ppm	3ppm
Methane (CH ₄)	0.55	% LEL	0~100%	20%	40%
Propane (C ₃ H ₈)	1.55	% LEL	0~100%	20%	40%
Butane (C ₄ H ₁₀)	2.11	% LEL	0~100%	20%	40%
Pentane (C ₅ H ₁₂)	2.48	% LEL	0~100%	20%	40%
LPG	1.55	% LEL	0~100%	20%	40%
Hydrogen (H ₂)	0.06	% LEL	0~100%	20%	40%
Carbon Dioxide (CO ₂)	1.52	% Vol	0-2%	0.50%	1.50%
Methane (CH ₄)	0.55	% LEL	0~100%	20%	40%
Propane (C ₃ H ₈)	1.55	% LEL	0~100%	20%	40%
Butane (C ₄ H ₁₀)	2.11	% LEL	0~100%	20%	40%
Pentane (C ₅ H ₁₂)	2.48	% LEL	0~100%	20%	40%
LPG	1.55	% LEL	0~100%	20%	40%
Ethanol (C ₂ H ₆₀)	1.51	% LEL	0~100%	20%	40%
Iso-butylene (C ₄ H ₈)	1.94	ppm	200ppm	20ppm	40ppm

Over 700 gas types are available - Contact our sales department with your requests - sales@gds-technologies.co.uk

E: sales@gds-technologies.co.uk **T:** +44 (0)113 286 0166

GDS TECHNOLOGIES LTD | FUSION POINT | ASH LANE | GARFORTH | LEEDS | LS25 2GA | UK

www.gds-technologies.co.uk

	GDS404+	GDS404+ 19" Rack System
Channels	1-4	
Measurements	Combustible Gas – LEL, % Vol. Toxic Gas – ppm Oxygen – % Vol. – Depletion / Enrichment Refrigerant – ppm Any 4~20mA Transmitter	
Sensor Inputs	Bridge type 3 wire mv (Catalytic) 2 or 3 wire 4~20mA (Electrochemical) 3 wire 4~20mA (Infrared / Catalytic / PID / Semiconductor)	
Channel Outputs	Analogue output 4-20mA into 200 ohms max load	
Relays	<p style="text-align: center;">Common Relays</p> <ul style="list-style-type: none"> • Low Alarm RL1 – D.P.C.O. normally energised or de-energised– default set ND • High Alarm RL2 – D.P.C.O normally energised or de-energised– default set ND <ul style="list-style-type: none"> • Latched or Unlatched – default set latched • Latched or Unlatched – default set latched • Third Alarm RL4 – D.P.C.O normally energised or de-energised- default set ND • Fault Alarm RL3 – S.P.C.O. normally energised or de-energised– default set ND <ul style="list-style-type: none"> • Latched or Unlatched – default set latched • Latched or Unlatched – default set latched • Global Alarm Relay RL5 – S.P.C.O. changes on all alarms and is resettable at all times <ul style="list-style-type: none"> • All contacts rated 3A/230v AC • Inhibit Indicator - RL6 - S.P.C.O contacts 1A@24v DC <p style="text-align: center;">Channel Relays</p> <ul style="list-style-type: none"> • High and Low Alarm relays S.P.C.O. normally energised or de-energised– default set ND <ul style="list-style-type: none"> • Latched or Unlatched – default set latched • All contacts rated 3A/230v AC 	
Sensor Cable	3 Core 1.5mm ² screened 1.5km	
Power	230/115v AC or 24v DC 12 Watts – Full Alarm Quiescent – 0.5A	
Panel Indication	Power – Green LED Mains Fail – Power Indicator change Green to Amber – when battery fitted Alarms – Red LED and display channel with alarm text Fault – Amber LED Display – Gas Readout, alarm status, gas type, location System Test – Alarm LED's Flashing / Relay Changeover Alarm Relays Inhibit – LED	
Audible Alarm	Lo, Hi, OR and Fault 68dB @ 1m Permanent Mute Option	
Operating Temperature	-10 to + 50° C	
Humidity	0-90 non condensing	
Ingress Protection	IP52 *IP65 available with over housing*	IP50
Dimensions	H-265 W-315 D-95mm	19" x 3U X 300mm
Weight	3.6 KG	4 KG
Enclosure	Mild Steel Finish - Powder coat Ash Grey BSA01	Brushed Aluminium
Standards	EMC BS EN 50270 Low Voltage Directive BS EN 61010-1	
Miscellaneous	Remote Accept / Reset System Lamp Test Enclosure – 20mm Cable Entry – Base / Rear Optional Battery Backup – 1 hour Delay to Alarm Option 10s, 30s, 10m	

GDS Technologies Ltd operates under an integrated quality, health and safety and environmental management system certified to ISO 9001, ISO 45001 and ISO 14001 by NQA Certification Ltd. This document is not contractual and the equipment specification may be modified at any time without prior notice.

E: sales@gds-technologies.co.uk T: +44 (0)113 286 0166