



ALIAPANEL

Paperless Recorder

Model ARC8001H Series

GENERAL

ALIAPANEL The ARC8001H Series Paperless Recorder features the most advanced technology. It can be applied across a broad scope of industrial applications. ARC8001H is the product which with multi-channels, complete functions, easy operation, high accuracy, low power but high performance. And the series overcome the old-fashioned paperless recorder, which has less channels, multiple installation and space-consuming problem.

FEATURES

- DIN Size (96 * 96 mm), 320 * 240 Pixels, TFT truecolor (LCD)
- 4 MB memory installed inside, applied to long terms data record
- Common input signal: mA, Include VDC, T/C, RTD, Hz etc.
- High accuracy +/-0.15% of reading
- 2 Relay outputs, 1 analog output (4-20 mA),1 (24 VDC) power supply output
- 4 Channels Max. input
- 24 VDC Aux. Power supply available for 2-wire system
- Display / Record Single-point, Multi-point, Trend, Totalizer, Bargraph
- The recorded data could be stored in USB memory & SD memory card and transferred to computer for soft analysis



STANDARD SPECIFICATION

- Number of Inputs : 1-4 Channels
- Input : T/C (K, S, B, E, J, N, T, R, N, etc.)
: RTD, CU50, CU53, BA1, BA2
: DCA (4-20 mA, 0-10 mA, 0-20 mA)
: DCV (0-5, 1-5 V, 20 mV, 100 mV)
: Frequency (1 Hz-5 kHz)
Resistance (0-400 Ω)
- Accuracy : +/-0.15% of Span
- Response Time : 50 ms
- Alarm Types : High & Low alarm, Incr. & Decr. alarm
- Output : 4-20 mA, Load 750 Ω * 1 point
: Relay, 3A/250 V * 2 points
: 24 VDC, 60 mA * 1 point
- Digit Input : 2 Points Maximum
- Storage Memory : 4 MB (on board)
- Recycling Mode : Newest Data overwrites to oldest data
- Recording Data Shift : USB memory (16 GB) / SD Card (16 GB)
- Display Update Rate : 1 Second
- Keypad : 6 Keys (Page, Left, Right, Up, Down, Enter)
for programming and display control
- Parameter Storage : Operation parameters are stored by EEPROM for more than 10 years
- Display : 3.5" Color-screen LCD
Trend & Bargraph : Vertical / Horizontal
Digital : 4-1/2 Digits programmable
Engineer Unit : 66 Different engineering units
Parameter Protection : Password entry (6 Digits)
- Logging Rate : 1-1800 Seconds Per Data
- Recording Capability : 72 Hours (4 Points, 1 Data / Second)
: 118 Years (1 Point, 1 Data / Hour)
- PC Software : Windows 2000 / XP / Vista / Win7
Display : Trend, Digital, Circular, Alarm, Bargraph
Totalizer
Convert Function : Saved as excel files
- Protection Class : NEMA 3 / IP54
- Weight : 0.5 kg Maximum
- Dimensions : 96 mm (W) * 96 mm (H) * 110 mm (D)
- Ambient Temperature : -10~60 °C
- Ambient Humidity : 10-85% RH (5-40 °C)
- Power Supply : 85-260 VAC, 50/60 Hz
24 VDC
- Vibration Test : 10-60 Hz ,10 m/s² for 3 hours
- Power Consumption : ≤10 W
- Communication : RS232 / RS485 (MODBUS Protocol)



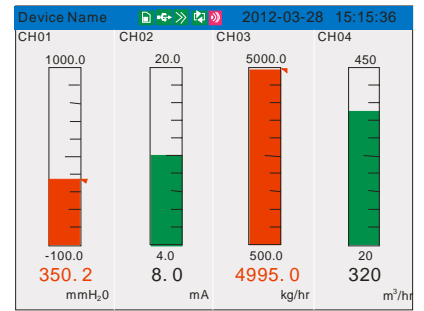
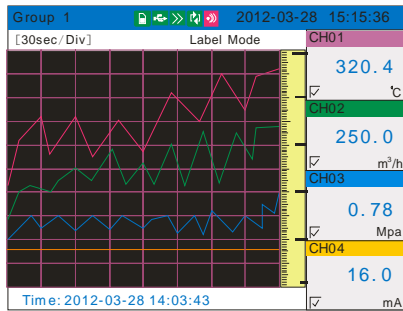
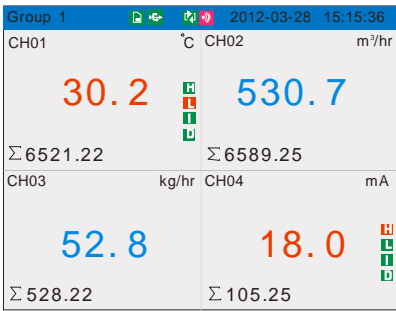
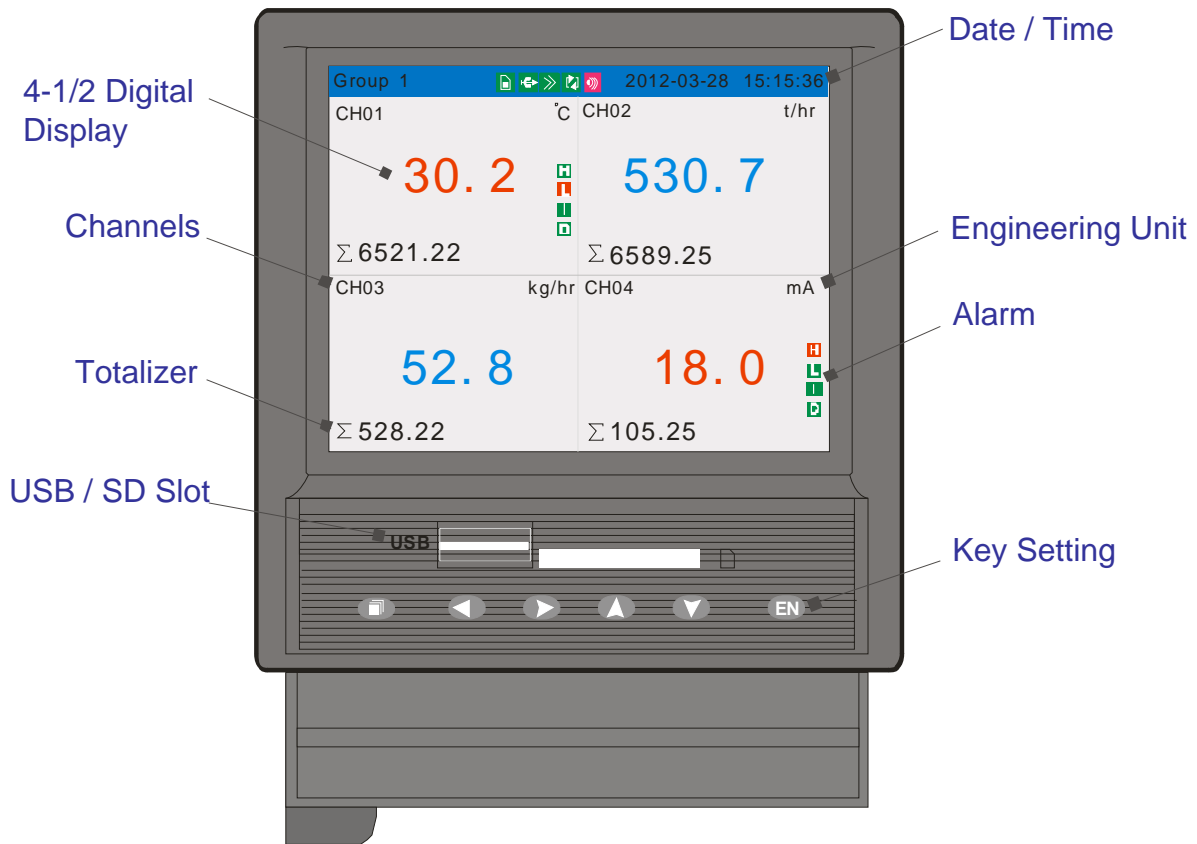
ALIA TECHNOLOGY LLC

633 W. 5th Street, 26th Floor, Los Angeles, CA 90071, USA
TEL : + 1 - 213 - 533 - 4139 FAX : + 1 - 213 - 223 - 2317

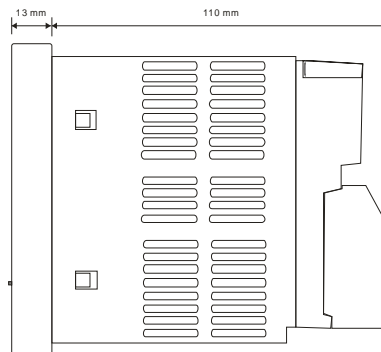
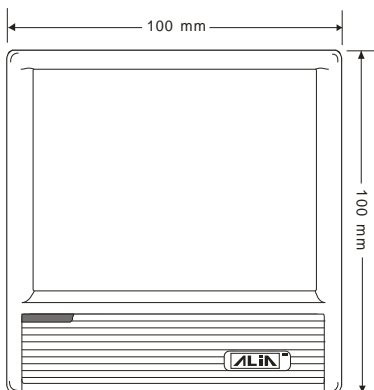


URL : www.alia-inc.com
E-mail : alia@alia-inc.com
ARC8001HV1.2.3.r1.A4.en

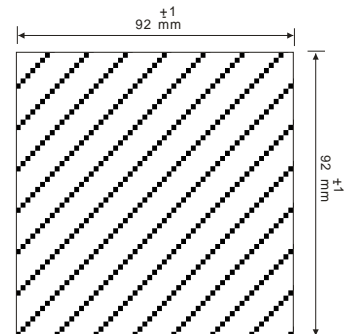
➤ Functions



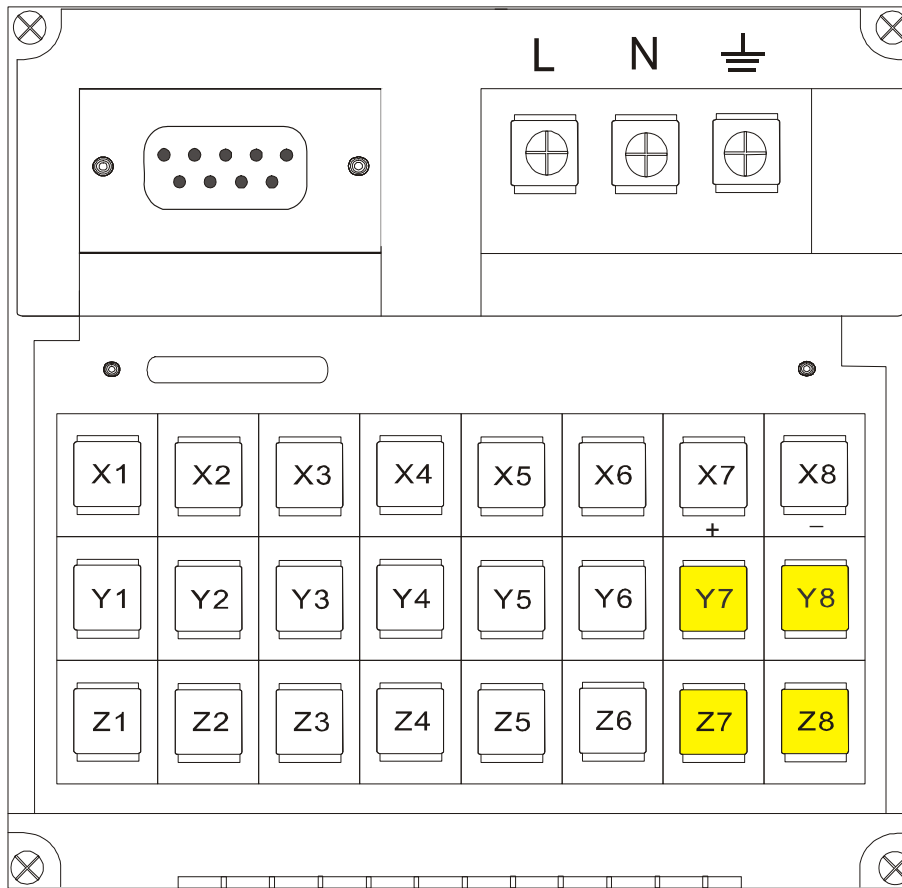
➤ DIMENSIONS



Panel Cutout



➤ WIRING DIAGRAM



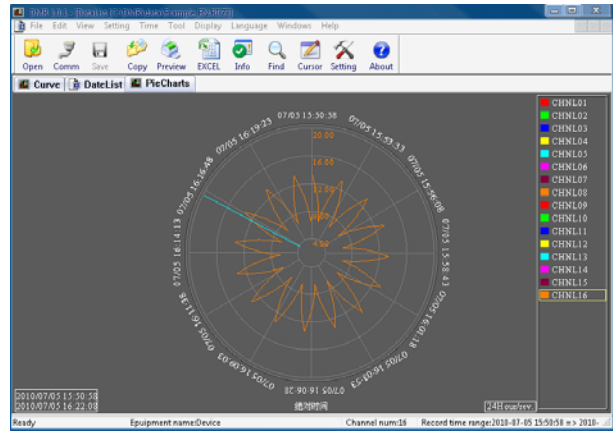
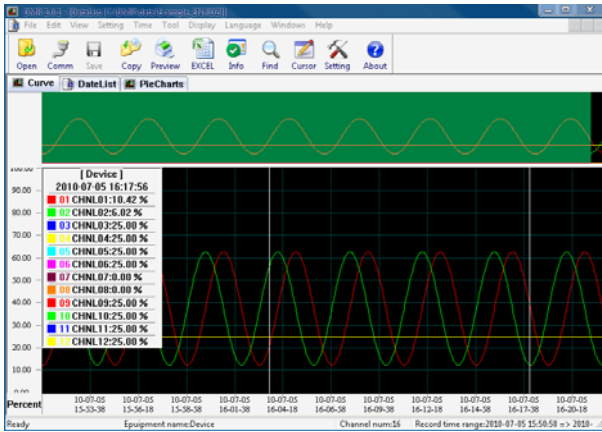
Input		Terminals	
	1-4, mA	Input	
	1-4, mV	Channel 1-4	X1 / Y1 / Z1 X4 / Y4 / Z4
	1-4, T/C	Frequency	Y5 / Z5
		Output	
		Relay Channel 1-2	Y7 / Y8 , Z7 / Z8
		4-20 mA	X5 / X6
	24 VDC	X7 / X8	

Output		

Standard Accessory

- * Advanced software Data Analysis at your PC and Remote Viewing
- * 16 GB USB Memory Disk (Advanced Software inside)
- * 16 GB SD Memory Disk (Advanced Software inside)

Advanced Software



MODEL SELECTION GUIDE

ARC8001H Series						
Example: ARC8001H-U4-A-R2-C-DC, Universal Input * 4, 4-20 mA output * 1, Relay Output * 2, RS485 (MODBUS), 24 VDC Power.						
ARC8001H-	XX-	X-	XX-	X-	XX	Description
Signal Input	U1-					1 Channel Input
	U2-					2 Channel Inputs
	U3-					3 Channel Inputs
	U4-					4 Channel Inputs
Output		N-				None
			A-			4-20 mA Output
Alarm Output			NN-			None
			R1-			Relay Alarm Output (NO), 1 Channel
			R2-			Relay Alarm Output (NO), 2 Channels
Communication				N-		RS232
					C-	RS485 (MODBUS)
Power Supply					AC	85-260 VAC, 50/60 Hz
						DC

Note: Only 1 channel can use frequency input. When choose 1 point from 1-4 channels as the frequency input, the terminals of frequency input must connect to Y5 / Z5.