

# 2nd Gen Wireless 4 Channel Dash Cam

## 2-4 960P Cams, Heavy Duty, 200' Wireless Range

### Quick Start Guide

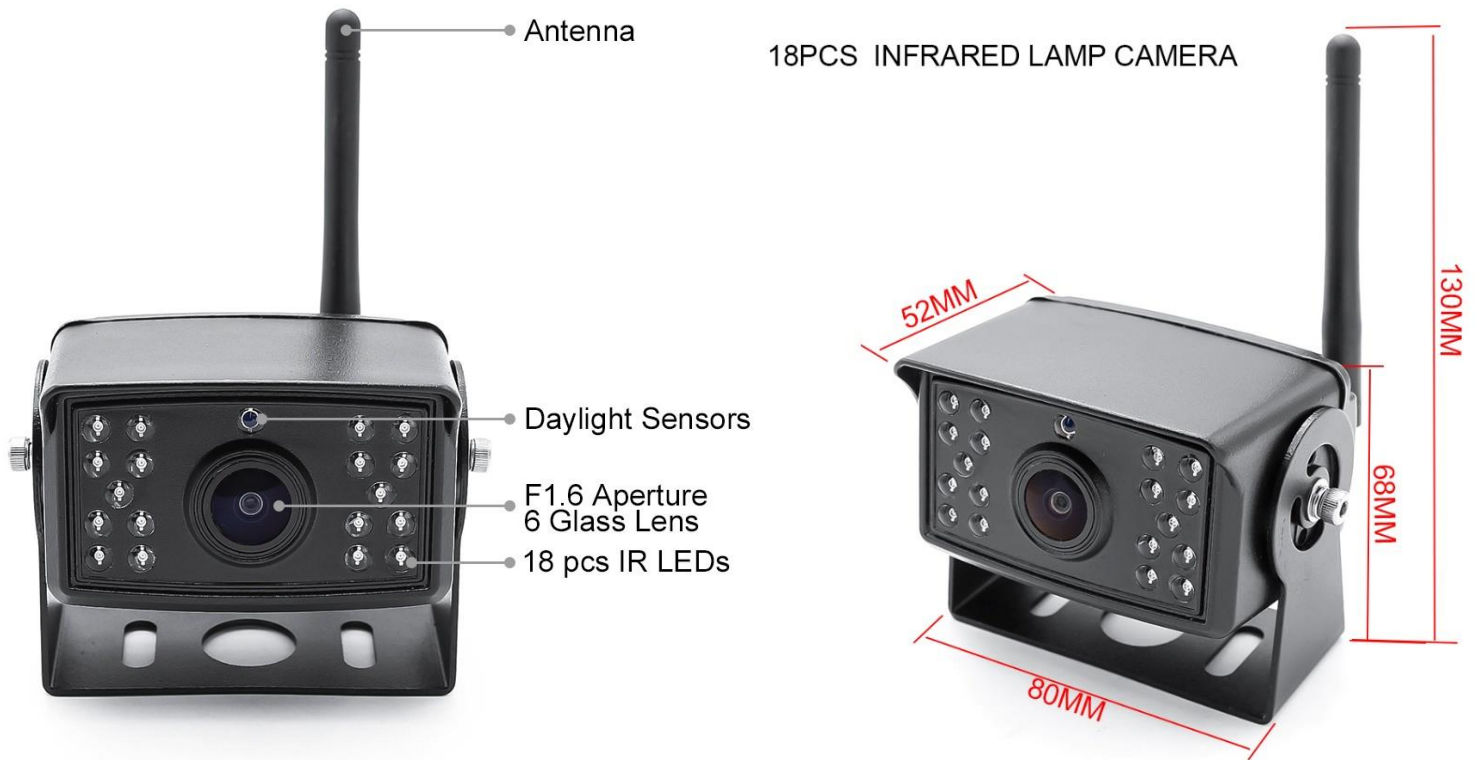


# 1. Introducing

Thank You for purchasing our Wireless 2 Channel Dash Camera System with the option to add up-to 4 cameras. 200+ Feet Wireless Connection - This product uses the latest point to point wireless connection technology without interfering with other wireless devices. Our wireless 4 channel dash camera can be installed on any vehicle. Monitor can be directly powered from the cigarette lighter socket, ACC, or automobile battery (highly recommended). Use any power source to power cameras for a wireless connection to the monitor. You will not need to run camera cable wires directly to the monitor.



# 1080P HD Camera Features



- Chips components: AHD HM1246
- Effective pixels: 1280×960P
- Signal format: PAL / NTSC
- Image resolution: 130W pixels
- Video output: AHD Video Signal
- Night Vision: Starlight Night Vision. The visible distance is greater than 10 meters.
- Lens :16MM F1.6 6 glass Lens.
- Working temperature: -30 °C ~ +60°C

## Camera Connection:

Step 1: Choose camera locations.

Step 2: Uses a 12mm Diameter Cable Hole. Secure the Camera with Two Screws.  
(Accessory Includes Screws)

Step 3: Locate any power source on your vehicle to connect camera wire. Connect the red wire of the power cable to the positive and the black wire to the ground.

## Monitor Connection:

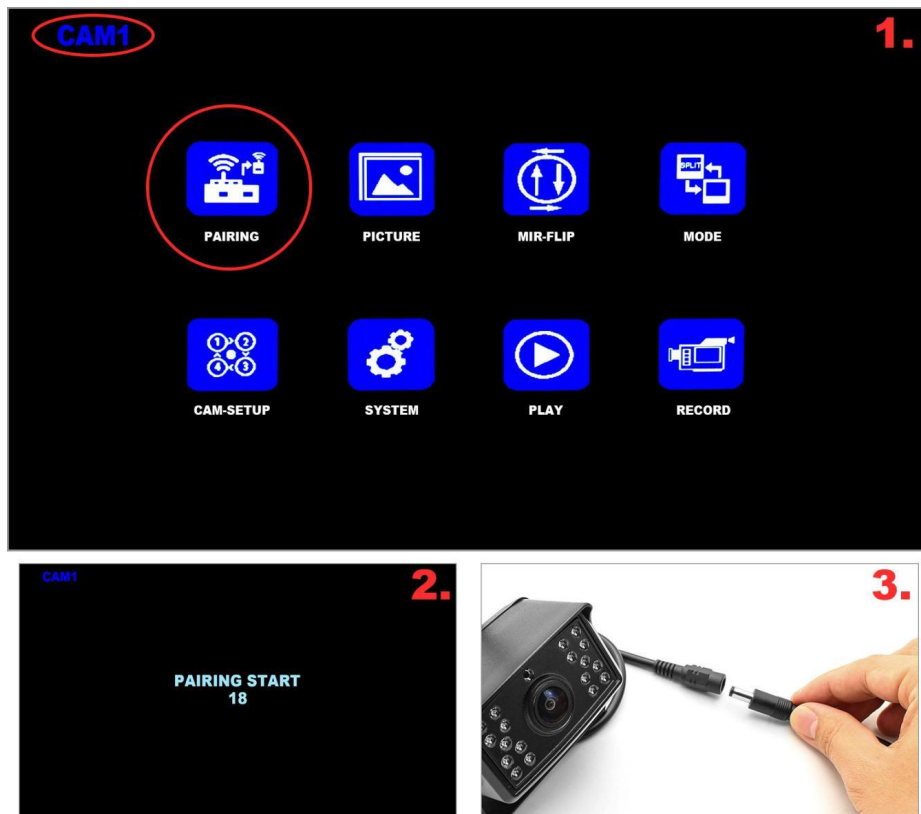
Monitor is directly powered from the cigarette lighter socket or ACC, there is no need to run any wires from the camera to the monitor.

# SUPER-EASY 1-STEP INSTALLATION

## Installation Guide



## Pairing Process



1. Make sure monitor and camera have power.
2. Select the camera channel by pressing the number on your remote (1-4), then push pairing icon from the Menu screen. Monitor will display the message "PAIRING START 20" and a 20 second to 0 count down will start.
3. Within the 20 second countdown, attach the cameras power quick disconnect/ connect cable to the cable behind the camera
4. The monitor and cameras should synchronize with each other within 10 seconds.
5. Successful pairing is when the camera picture view is displayed on monitor.
6. If pairing is unsuccessful, the monitor displays message "No Signal". Repeat the pairing process and make sure that camera has power.



# 9-inch Monitor Features and Guide

- Monitor Video signal: Supports AHD Digital signals
- Screen size: 9-inch HD Full View LCD Screen
- Screen Brightness: 500CD/M2
- Screen Pixels: 1024\*600P
- Video Recording: Supports up to 128GB SD Card
- Power supply voltage: DC12V-30V
- Monitor Image: Up/Down/Left/Right
- Signal format: PAL/NTSC

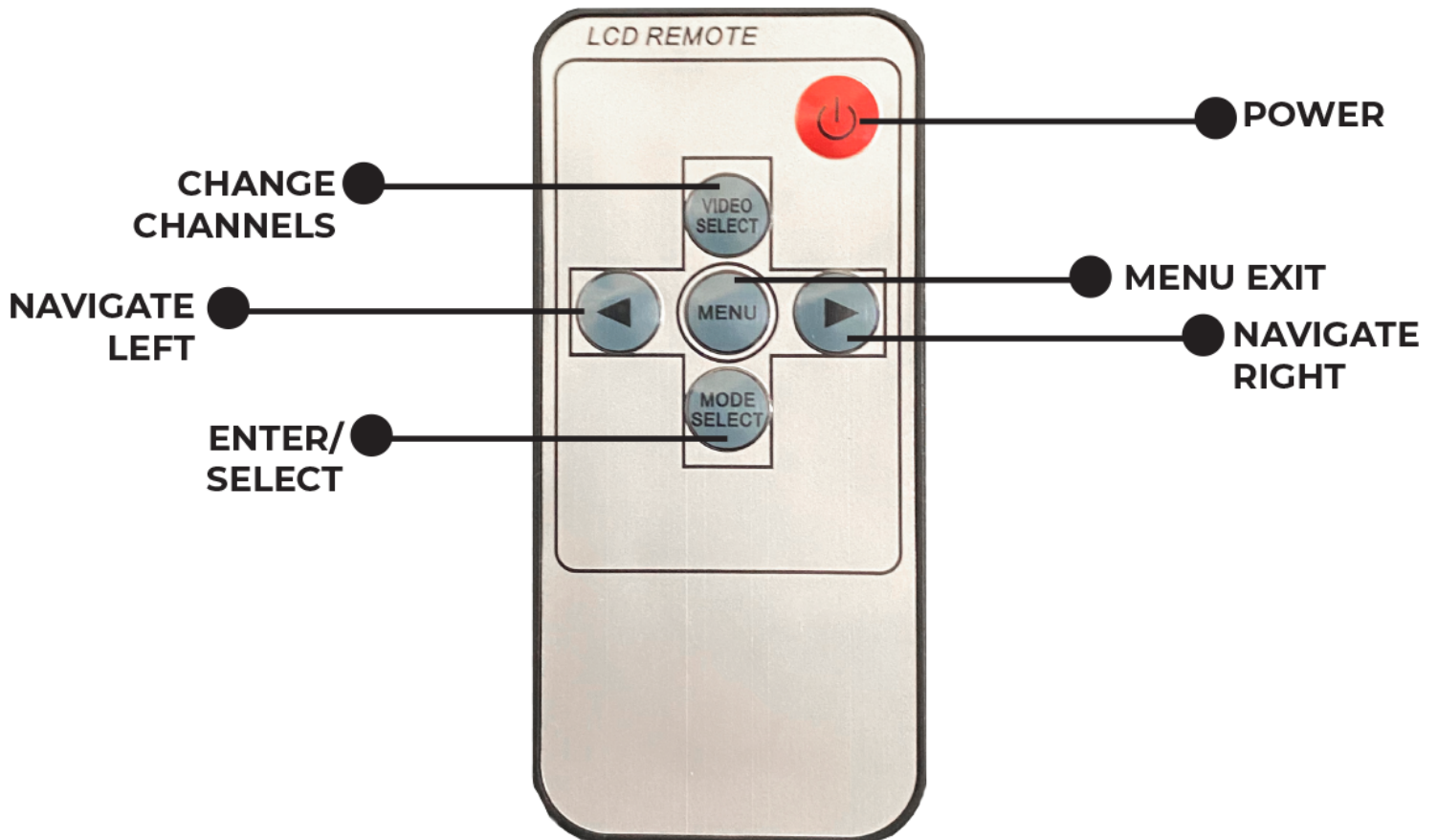
U Support Mounting Bracket  
Angle Adjustment Screws  
SD Card Slot



1. MODE – Press to Record / Stop Recording
2. V1/V2 – Toggle between single 1-4 camera view / side by side camera view / quad camera view (Toggle option is not available on remote controller)
3. - / + has two functions :
  - I. Volume up/down
  - II. When in the Menu settings, - /+ used to navigate through menu options
4. (M) Menu – MUST be in SINGLE CAMERA VIEW to access menu
5. Power Button – Power On/OFF LCD Screen. MUST always be POWERED on for the cameras to be record to SD card.
6. IR – Remote control sensor – Point remote towards IR



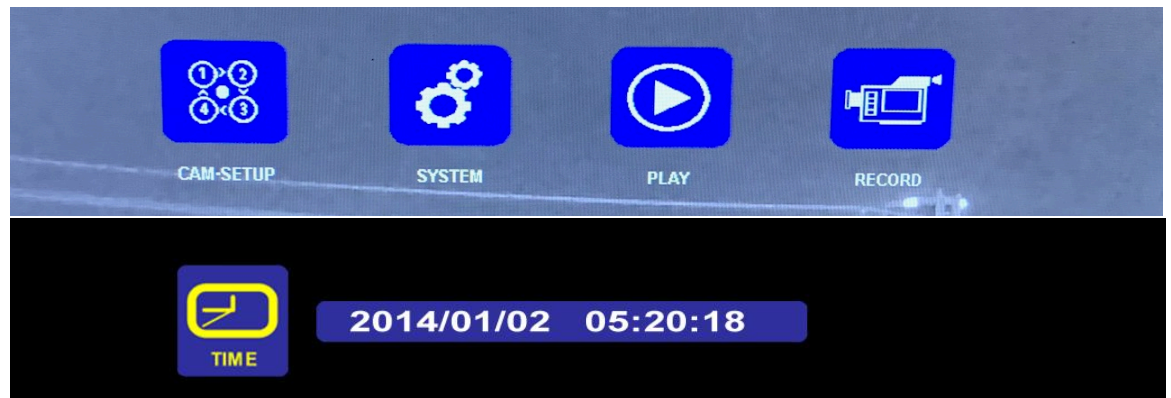
Connect CLA power cord to LCD power cable



## System Menu Settings

# How to set Time and Date

- Press Menu button, then use right arrow to highlight Systems Icon. Press Mode button to view System menu. Press Mode button on TIME icon until icon turns red. Once icon is red, the year will automatically be highlighter yellow. Press right arrow to change to correct year. Once done, Press Mode button to change day. Press right arrow to change to correct day. Once done Press Mode button to change month. Press right arrow to change to correct month. Once one, Press Mode button to hour. and so on. The Time icon will turn back to yellow once you have changed time and date



## Record Menu Settings

# Format Card Settings How to Format SD Card

- Press Menu button, then use right arrow to highlight Record Icon. Press Mode button to Record menu.
- Select REWRITE ON/OFF if you would like loop recording to function. REWRITE/ Loop recording ON is when the SD card is full, it will automatically record over older video recordings. Loop recording OFF is when the SD card is full, it will automatically stop recording.
- Press Menu button, then use right arrow to highlight Record Icon. Press Mode button to Record menu.
- Highlight Format, press Mode until SD Card icon turns red. Once red, use right arrow to select on. When ON is highlighted yellow, press mode button to format card
- FORMAT: Micro SD card must be formatted before being used. All documents on SD card will be lost when SD card is formatted.

