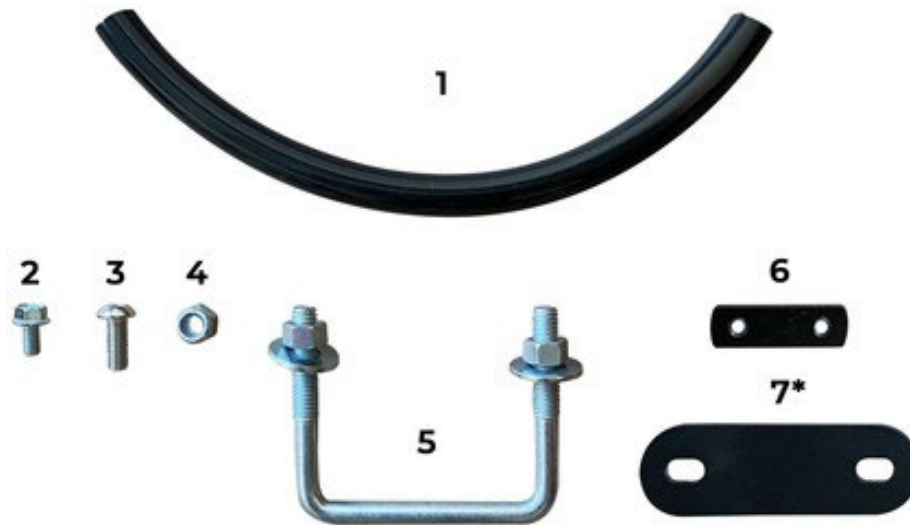


Fully Read Instructions Before Beginning Installation

Note: Yucca Manufacturing is not responsible for any damage done to your vehicle or rack system during installation or use of this rack. This is not an accessory endorsed by the vehicle manufacturer, by installing this product the vehicle owner is assuming responsibility for any damage done to his/her vehicle. Refer to your owner's manual and fully understand weight and load restrictions for your particular model.

Feel Free to reach out to us at YuccaMfg via our [Contact Page](#), email at hello@yuccamfg.com, or Instagram [@yuccamfg](#) with any questions or concerns.



Included Hardware:

1. UV Resistant Rubber Tubing (1 x 11" Pc)
2. M6x12 Flange Bolt (16 Pcs)
3. M8x20 Button Head Screw (32 Pcs)
4. M8 Lock Nut (20 Pcs)
5. 3/8" U Bolt (4 Pcs)
6. M6 T-Slot Double Nut (8 Pcs)
7. U-Bolt Top Plate (4 Pcs)

* U-Bolt Top Plate to be used for Badlands and First Edition models only

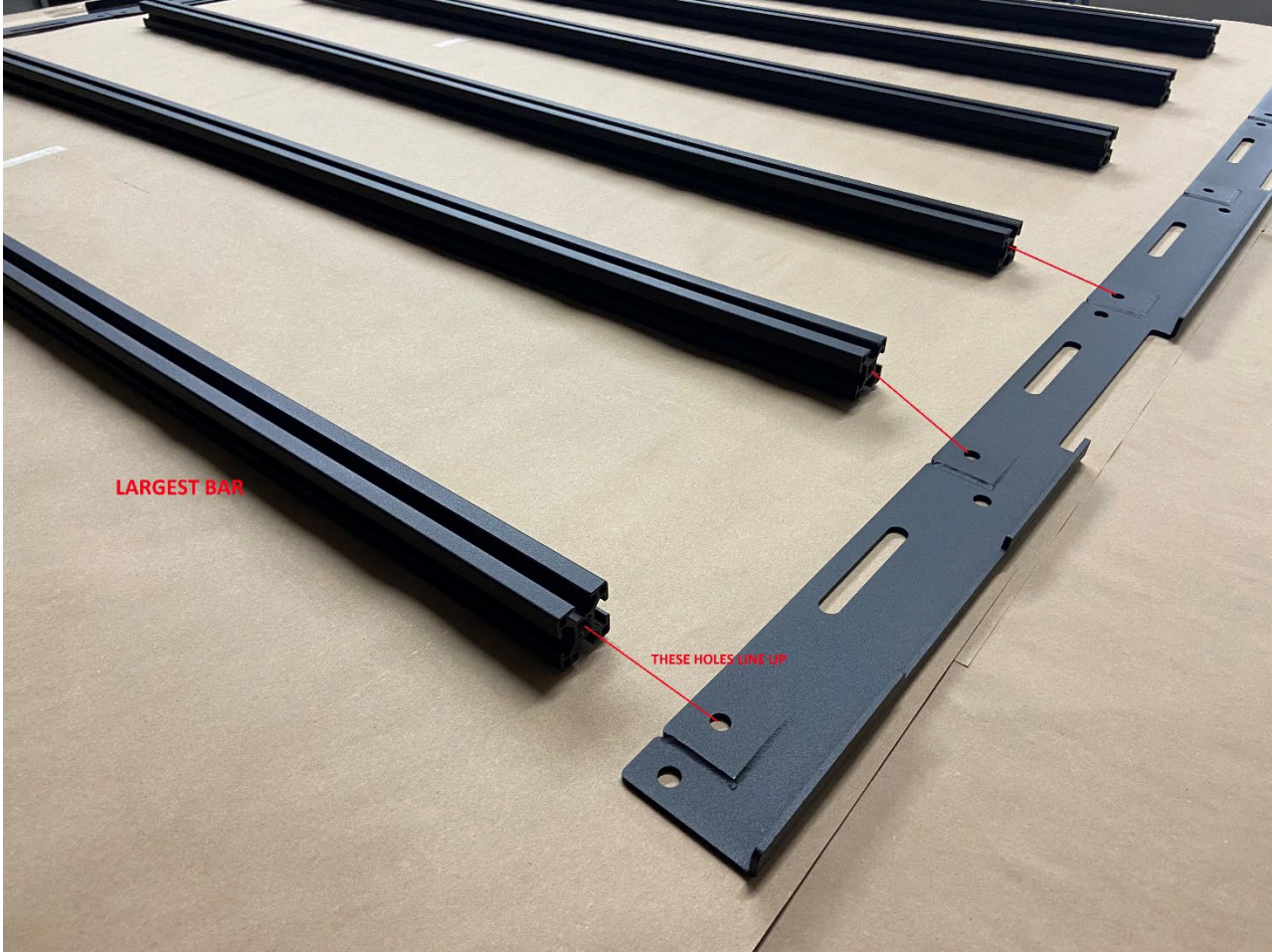
Tools Needed:

- Scissors
- 5mm Allen Wrench
- 10mm Wrench
- 13mm Wrench
- 9/16" Wrench

Step 1 - Lay Out the Crossbars and Frames

To begin, lay out the included crossbars from smallest to largest. They are all slightly different in size, the smallest bars will be towards the back of the car. You'll also lay the frames out along the side of the crossbars as pictured.





LARGEST BAR

THESE HOLES LINE UP

Step 2 - Install the T-Slot Double Nuts (#6) and Side Frames

REQUIRES 5mm Allen Wrench

Slide the T-Slot Nuts (#6) in the crossbars. You'll install 2 of them on the 1st, 2nd, 4th, and 5th largest crossbars as noted below from the red circles. You'll also install the frames to the sides of the crossbars using the included M8x20 Screws (#3), leave these screws loosened a quarter turn for now. Note: The frames are left and right specific, see the picture above to ensure you are installing them correctly.



Pro Tip: Use [#242 Loctite](#) when threading the M8x20 Button Head Screws to ensure they don't come loose during use offroad.



Step 3 - Install Foot Brackets using M6x12 Bolts (#2)

REQUIRES 10mm Wrench or Socket

Using the included M6x12 Flange Bolts (#2), install the 4-foot brackets to the cross bars of the rack. You will screw the flange bolts into the previously installed T-Slot Double Nuts (#6), keep bolts finger tight so they don't slide around for now. Install the foot brackets parallel to the outside frames about 2 fingers away from the bent part of the frame. See below.



Step 4 - Install the Supplied U-Bolts (#5) and Rubber Tubing (#1)

Using some scissors, cut the supplied Rubber Tubing (#1) into 4 pieces roughly 2.5" long. Then cut along the length of the tubing pieces and slide the tubing over the center of the supplied U-Bolts (#5), see below.



Step 5 - Install the Side Panels and Front Fairing

REQUIRES 5mm Allen Wrench and 13mm Wrench or Socket

Now's the time to install the Side Panels to the Frame. Use the supplied M8x20 Button Head Screws (#3) and M8 Lock Nuts (#4) to install the front and rear Side Panels on the rack. Once those are installed go ahead and install the front Fairing as well. See Below.

Front Side Panel:



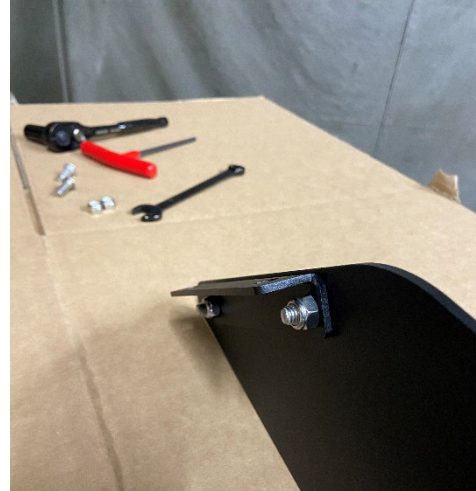
Rear Side Panel:



Wind Fairing (this is the trickiest!):

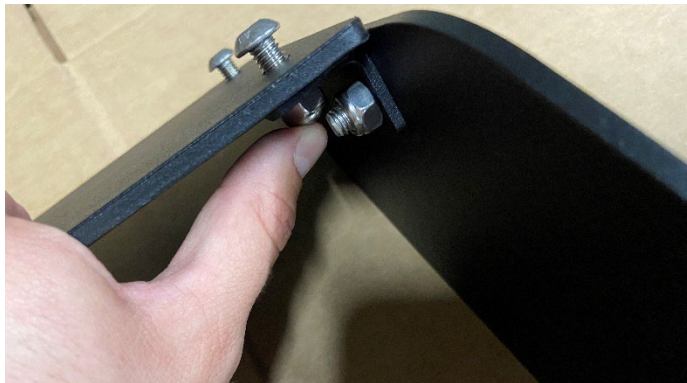
NOTE: Lightbar fairings are bent to replace the bracket. Fasten using the same steps below.

-First, fasten the fairing brackets to both front fairings (see below):



-Next, with the flat edge of the wind fairing facing down, fasten it to the brackets.

Pro Tip: hold the locknut flush to the back of the bracket, then screw in your M8 (see below):



Step 6 – Place the Rack On the Roof Rails of the Car

Grab a friend and go ahead and install the rack system onto the car. Make sure the foot brackets sit on the OEM roof rails as shown below. You may need to loosen the M6x12 bolts on the foot brackets so they can slide freely into place. We will work on alignment in the next few steps!



Step 7 - Secure the Foot Brackets Using the Supplied U-Bolts (#5)

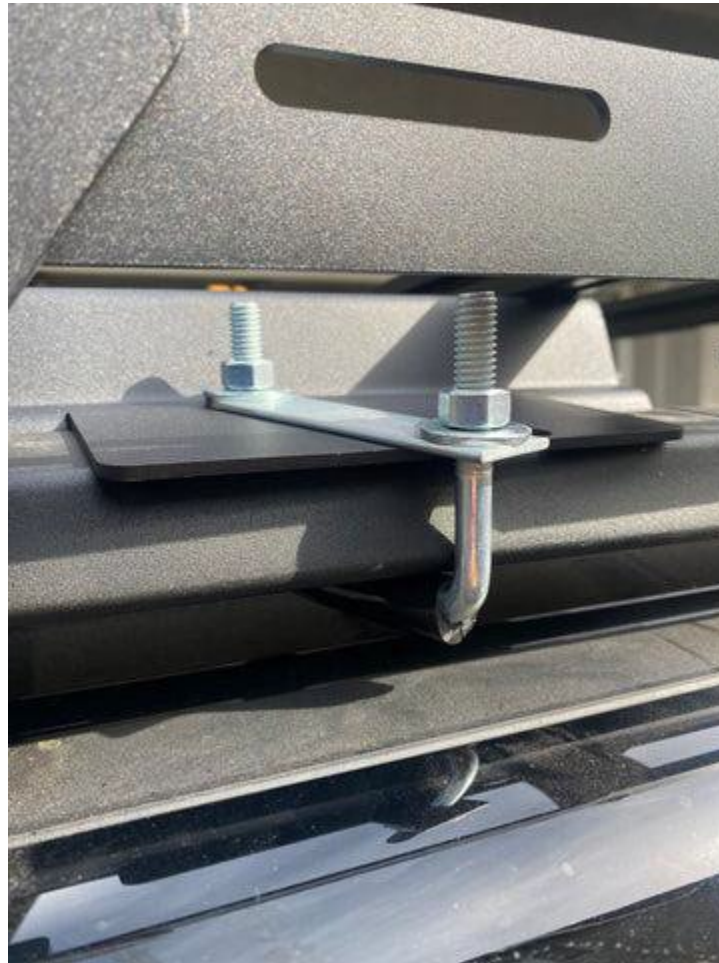
REQUIRES 9/16" Wrench or Deep Socket & 10mm Wrench or Socket

The U-Bolts (#5) will go underneath the OEM roof rails with the threaded ends sticking up through the holes of the foot brackets (you may need to lift the rack slightly to get them into place). Once the U-Bolts are through the holes, hand tighten them using the included washers and nuts. See below. Note: make sure the foot bracket is sitting against the inside edge of the OEM roof rails as close as possible. The front of the rack will sit very close to the U-Bolt Threads, they should sit close but should not touch. If they touch, the rack might be installed too far forward.

****Note: The Badlands and First Edition model Bronco Sports have larger roof rails and will require the U-Bolt Top Plates (#7*). The U-Bolt will mount with the outside threaded ends on the outside of the foot bracket, but as close to the roof rail as possible. You will place the U-Bolt Top Plate on top of the foot bracket with the U-Bolt Threaded Ends going through the holes to secure the bracket properly. Then proceed to install the washers and nuts with the U-Bolt assembly. See Below***



For Badlands and First Edition



Step 8 - Center Your Rack on the Car

REQUIRES 10mm Wrench or Socket

With the foot brackets secured you will now adjust the rack's angle on the car. If you haven't already done so, loosen the M6x12 Bolts holding the foot brackets. This will allow the rack to slide around more freely on top of the car. Be sure to stand far behind and in front of the car to ensure the rack is sitting straight and centered left to right. Use a tape measure to ensure the corners are equally distanced from the OEM roof rails to help. Once the rack is centered, check the positioning with the side panels once again.



Make sure the side panels align with the contour of the car!



Step 9 – Final Check of Rack Positioning and Clearance then Crank it Down!

REQUIRES 10mm Wrench or Socket, 9/16" Wrench or Deep Socket, 5mm Allen Wrench, and 13mm Wrench or Socket

Make sure the rack clears the roof of the vehicle completely. Also check to ensure the Front Fairing doesn't hit the OEM roof rails. Once you are confident the rack is centered and correctly positioned, go ahead and tighten the M6x12 Bolts (#2), securing the foot brackets to the crossbars. Once this is done go over every nut and bolt on the rack to ensure they are all tight. The Crossbars will be fully tightened at this time. **BE CAREFUL when tightening the M8x20 Screws to the Crossbars, the Crossbars are aluminum, meaning they will strip easily if over tightened.**

Check for clearance to the roof of the car, sides of the roof rails, and the rear antenna. ***If you have a sunroof, SLOWLY open the sun roof making sure it clears the front fairing, crossbars, and sides of the foot brackets. Be extremely careful and take your time to make sure there is clearance for the sunroof! It will be a close fit!***

Note: If your rack is too far forward or back, you will need to fully loosen the U-Bolts (#5) and adjust the rack accordingly. If your rack angle or side to side position is wrong, you will need to loosen the M6x12 Bolts (#2) and adjust.

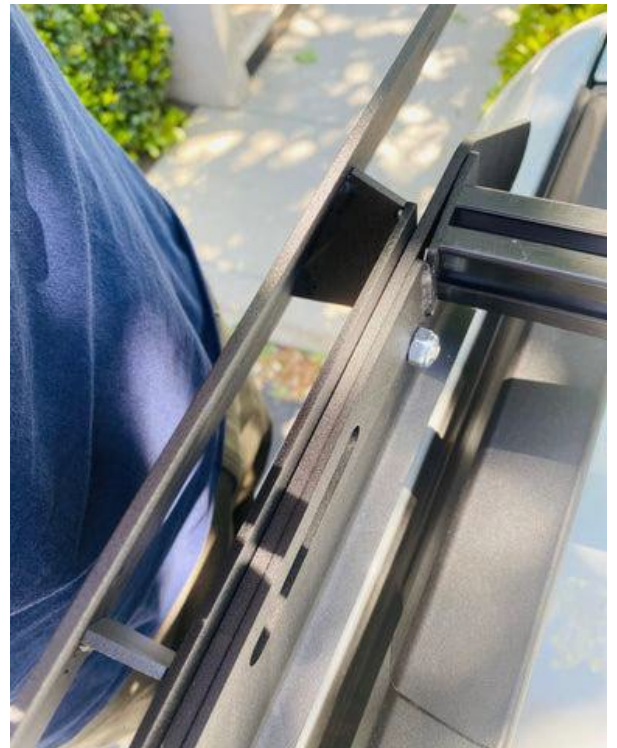


Step 10 - Install Accessory Brackets (Optional)

REQUIRES 5mm Allen Wrench and 13mm Wrench or Socket

The hole pattern on the Accessory Brackets is the same as the holes in the Side Panels for the rack. Simply thread the M8x20 Button Head Screws (#3) through the holes in the Accessory Brackets, Side Panels, and Frame and tighten them down using the M8 Locknuts (#4). Each Accessory Bracket requires a minimum of 2, M8x20 Screws (#3) to secure properly to the rack.

Pro Tip: Use a thin layer of [Mastic Tape](#) as a barrier between the Accessory Bracket and Side Panels so they don't scratch.



If you've made it this far, Congrats! Use the discount code: [ireadtheinstructions](#) for free shipping on your next order!