

FIRE DESIGN SOLUTIONS



ecosmart[™]
Fire

WHAT IS ECOSMART FIRE?



ULTIMATE DESIGN FLEXIBILITY

An EcoSmart Fire is a bespoke piece of industrially designed fire furniture that exudes warmth, burns cleanly, and defines a space without dominating it. From luxury resorts to commercial showrooms and residential settings, EcoSmart is embraced by the world's leading architects, designers, developers, landscapers – and style savvy homeowners.

FUELLED BY
e-NRG
BIOETHANOL

BURNS CLEAN
NO SOOT
NO SMOKE
NO ASH

INDOOR &
OUTDOOR
MODELS

OVER 90%
EFFICIENCY

NO GAS,
NO FLUE, NO
ELECTRICITY

QUICK & EASY
INSTALLATION

WHY CHOOSE ECOSMART FIRE?

Independently certified safety features; endorsed by design, construction and landscape professionals; free from utility or flue restrictions; loved by homeowners; kind to the environment – there are countless reasons why choosing an EcoSmart Fire is the smartest fireplace option. Architecturally designed to enhance contemporary living and commercially spaces, EcoSmart Fire adds warmth and ambiance with a clean-burning, flickering flame that is free from soot, smoke or ash. Now that's what we call EcoSmart.



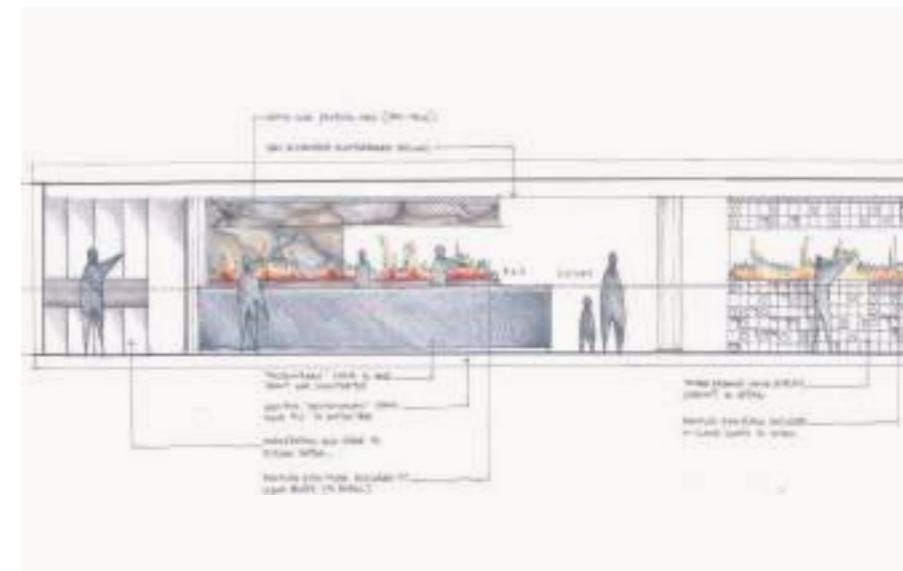
Ultimate Fire Design Flexibility

With the uniquely versatile EcoSmart Fire, you have the building block to help bring your design to life.

Because bioethanol is clean burning, EcoSmart Fire models do not need a chimney or a flue, or a utility connection – offering the ultimate in fire design simplicity and flexibility.

Committed to Safety

Researched and developed by our in-house design team, tested by independent facilities, and fabricated according to our own exacting standards – the EcoSmart Fire is an expression of our commitment to creating the best. The combination of rigorous testing, independent certification and leading safety features is why the EcoSmart Fire gives you priceless peace of mind.



Personalised Support

Our team works closely with professionals such as architects, designers, landscapers, builders, developers and, of course homeowners to ensure the most appropriate EcoSmart Fire models are selected for each individual project.

Eco-friendly

EcoSmart Fire uses the cleanest, most efficient fuel source on the market: bioethanol. Bioethanol is an eco-friendly fuel that burns clean and has a minimal carbon footprint. The fact that no flue or chimney is needed means most of the heat generated by an EcoSmart Fire remains in the room.

e-nrg.com



Recognised World Wide

It's one thing for us to believe in our own product but quite another when the world's leading architects, designers and landscapers embrace it.

EcoSmart Fire doesn't just add to a space, it defines it. When quality, style, reliability and safety are paramount, EcoSmart Fire is the fireplace of choice for connoisseurs of style and substance.

Review our extensive gallery of installations on our website ecosmartfire.com

WE HAVE YOUR FIRE DESIGN SOLUTION

Whether you're creating a custom fireplace feature, renovating an existing hearth, or looking for an out-of-the-box system, we have a stylish solution to suit your needs. The EcoSmart Fire collection of bioethanol fireplaces is incredibly versatile and gives you absolute installation flexibility to create exactly what you want, without any hassles or restrictions.

From hand crafted freestanding pieces of fire furniture, to built-in custom designs for bespoke settings - EcoSmart Fire offers a complete collection of versatile and award-winning fireplace solutions that make having an open flame incredibly easy, whatever the setting, at the same time as being good for the environment.



BUILT-IN

Elegantly designed and robustly constructed, EcoSmart's bespoke built-in fireplaces add a dramatic showpiece to residential and commercial premises.

Offering optimum heat output, flame enhancement and safety, their high quality, stainless steel and toughened glass construction complements a wide range of building materials and finishes.

Free from traditional installation restrictions such as plumbing, roof work, and gas or electricity connections, they provide unlimited design options for builders, architects, interior designers and homeowners.



FREESTANDING

Freedom, flexibility and eco-friendly functionality - EcoSmart's freestanding bioethanol fireplaces add warmth, style and ambiance to indoor living and outdoor entertaining spaces.

Cleverly refashioning the traditional fireplace concept into a piece of flexible fire furniture means that you can now enjoy the simple pleasures of an open fire whenever and wherever you want it.

From classic designs to see-through centrepieces, this collection of freestanding fireplaces is defined by its streamlined construction, sophisticated ignition system and sustainable fuel source. Boasting minimalist chic and maximum functionality, EcoSmart's fire solutions create an architectural focal point even when they are not in use.

BUILT-IN



Bioethanol Burners

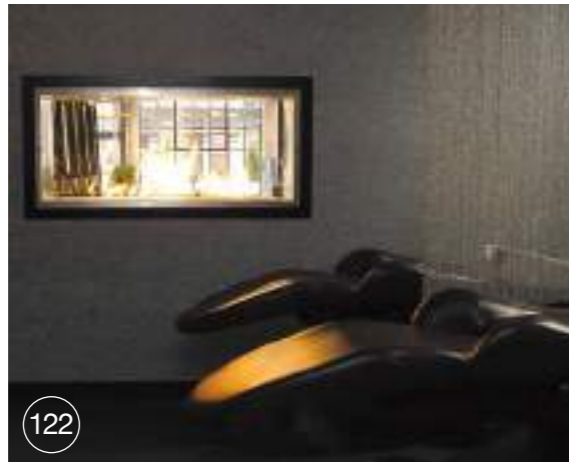
The core of all of our fireplaces, offering the ultimate in design and installation flexibility.

The residential and commercial creative design possibilities are endless when you use a flueless, vent-free ethanol burner.

Fireplace Inserts

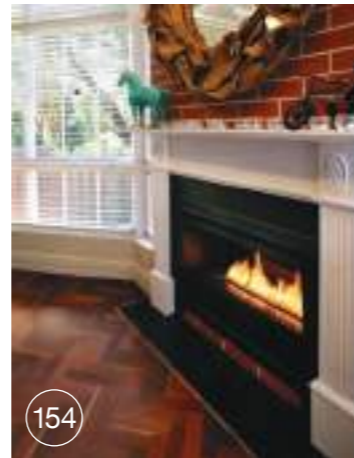
Elegantly designed and robustly constructed, our fireplace inserts are available in a range of styles and finishes. Choose from our Premium Single Sided or Double Sided Fireplaces, our Curved Fireplaces or six versatile styles in our Flex Fireplace Series.

Our fireplaces do not require any flashing, roof work or plumbing, which significantly reduces installation costs and time. Installed with ease, these fireplaces can be integrated within cabinetry or a fireplace setting, EcoSmart fireplaces offer the perfect blend of functionality and design aesthetics.



Grate Inserts

Transform traditional wood hearths into contemporary, eco-friendly ethanol fires - without the fuss.



FREESTANDING

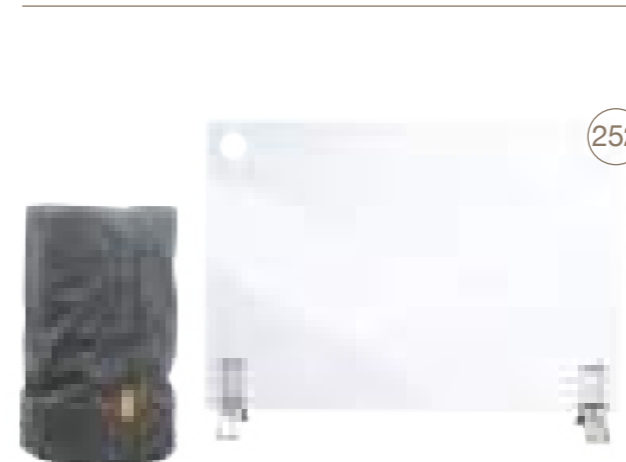


Centrepieces

Freestanding pieces of fire furniture that bring versatility to indoor and outdoor living - and create an instant talking point. Available in a variety of shapes and sizes, they blend seamlessly as a decorative accent or a functional piece of fire furniture.

Wall Features

Enrich the contemporary aesthetics of today's residential and commercial environments with a relocatable piece of fire furniture. With no installation or building works required, simply unpack, put the fireplace into position, and off you go.



ACCESSORIES

Our clean and simple fireplace screens, fixing systems, top trays, fireplace covers and accessories have been designed to improve the safety of operating an open fireplace without compromising the view to the flame.

BUILT-IN

BIOETHANOL BURNERS



Rising Glen, USA
Model: XL900



Read more about this case study at
ecosmartfire.com



**Midorinokaze Resort Kitayuzawa, Japan
Model: XL900**

The Noguchi Collection Relaxation Library at the Midorinokaze Resort features ultra-comfortable sofas arranged to put your mind and body at ease and while EcoSmart's mesmerising, flickering flame creates an enticing atmosphere.

“The fireplace is the center element of the lounge, creating a focal point that divides the seating groups. It’s the feature that can be seen from all areas of the space and enhances the warmth of the walnut panelled room.”

MEAGHAN WREN,
MEYER DAVIS STUDIO

AKA Hotel, New York USA
Model: XL700

The intimate a.lounge artfully complements the traditional warmth of New York’s AKA Sutton Place with a relaxing yet of-the-moment ambiance. Numerous cozy seating areas, a spectacular marble bar and open fireplace created with an XL Burner completes the stylish scene.



Read more about this case study at ecosmartfire.com



Floreat Residence, Perth Australia
Model: XL900 x 2

Pairing multiple burners creates an elongated flame that provides a visual counterbalance to particularly large spaces and rooms with high ceilings.



Churchlands Residence, Perth Australia
Model: XL900

At the centre of this custom built home is a fire design that inspires and encourages family gathering without a TV in sight.





Private Residence, Japan
Model: XL900 x 3

This fireplace showpiece featuring three EcoSmart XL900 Burners positioned side-by-side creates a captivating living room entrance. Stacked stone surrounds are softened by the smoke- and soot-free flickering flame, which is fuelled by eco-friendly e-NRG bioethanol.

“The fire needed to offer both visual and physical comfort so patrons can sit around the fire pit with a glass of wine. The fire works well with the pit design and natural stone pebbles to create a gathering space.”

VICTOR CHEUNG,
ARCHITECT

Junction Moama, Victoria Australia
Model: XL500 x 3

Hospitality creates an ideal environment for guests, and accounts for how the food, drink and aesthetics shape mood. In this case, EcoSmart's atmospheric fire feature further enhances the restaurant's reputation as a "gathering place that celebrates the region's finest."



Read more about this case study at
ecosmartfire.com



“ We also look at longevity and durability of the product. I started looking at all the specifications for EcoSmart and that formed the basis and we built around it.”

JEFFREY STRNAD,
BEACH HOUSE DESIGN
AND DEVELOPMENT



Hillside Residence, Beverly Hills USA
Model: XL900 x 3

Beach House Design and Development was engaged to construct a combination fireplace and AV cabinet within a space made up of 12" poured-in-place concrete walls and a rooftop pool above – with absolutely no way to vent the fireplace. Enter EcoSmart Fire.

 Read more about this case study at ecosmartfire.com



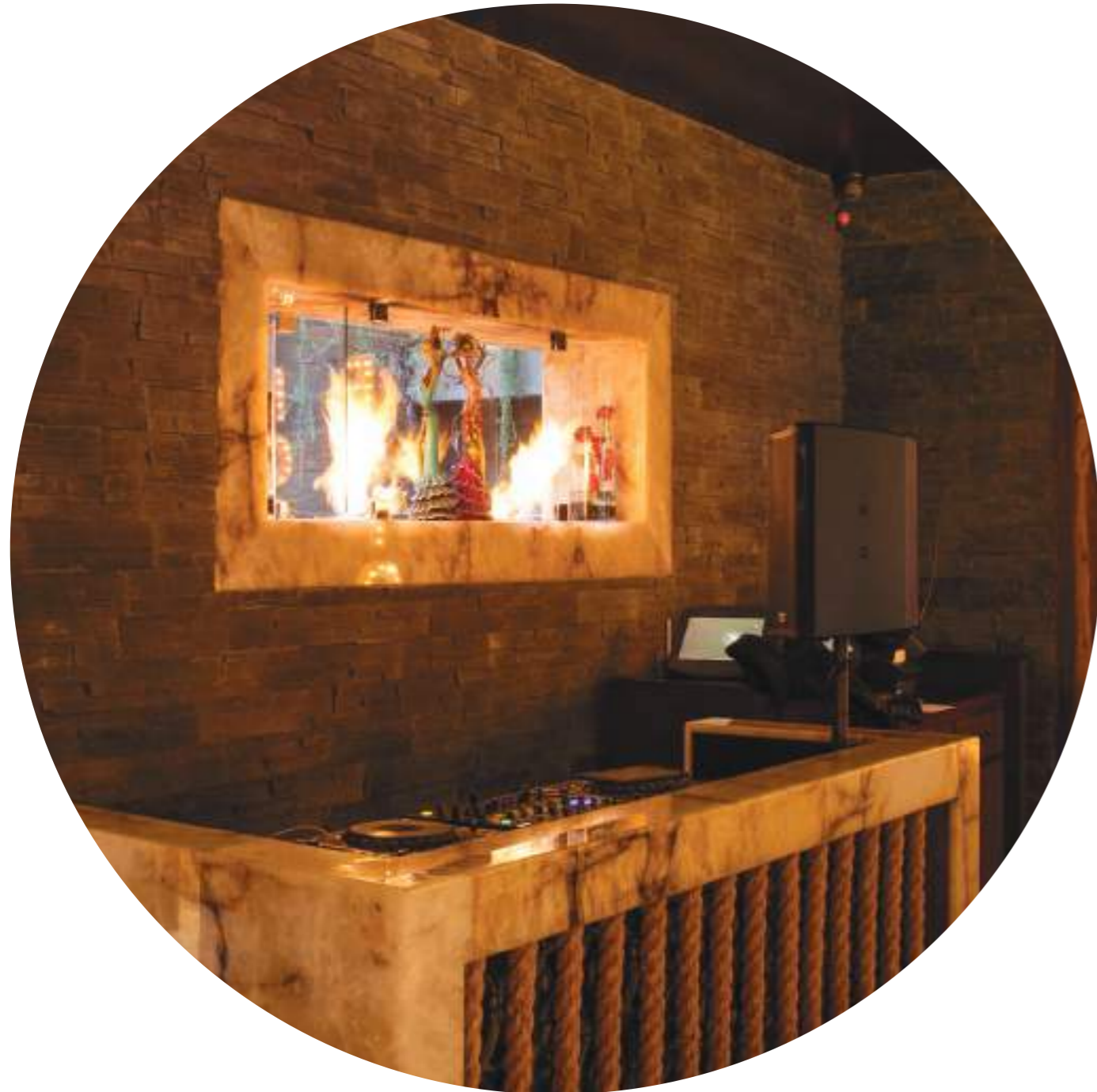
Private Residence, Japan
Model: XL900

Drawing the gaze towards traditional Japanese seiza-style furniture placement is EcoSmart's low-slung fire feature, which showcases a rectangular XL900 Burner that's ideal for showroom settings. Its flue-less construction provides endless installation freedom for merchandising professionals and trade show designers.



Rising Glen, USA
Model: XL900 x 2

For acclaimed Los Angeles architect Michael Parks, the vision behind 'Rising Glen' – a striking home in the Hollywood Hills – was to create a warm, liveable, inviting paragon of modern architecture.



Toca Madera, USA
Model: XS340 x 2

Located in a Los Angeles restaurant “conceived around a communal dining philosophy”, EcoSmart’s twin bioethanol burners create a captivating see-through effect between eating and entertainment spaces. Enhancing Hollywood’s latest hotspot is a series of flickering flames that work well with the earthy colour tones.





St Regis Hotel, Istanbul Turkey
 Model: XL500 x 2
 Opposite Page: XL900 x 3

Istanbul's modernist Art Deco-influenced St. Regis uses EcoSmart's stunning fire feature in its Petit "O" Bar (above), which offers a formal setup during the day before transforming into a relaxed lounge area when the sun goes down.

Located next door is the hotel lobby (right), which greets guests with a wall of flickering flame courtesy of three XL900 Burners. EcoSmart's longest linear burner creates a stunning horizontal piece of architecture when grouped for maximum effect.



“The burners
take the piece
from ordinary to
extraordinary.”

ROSIE BLAY,
LIQUID DESIGN



Fujiya Mansions, Hong Kong
Model: XL900 x 2

You know you've 'arrived' when you walk into a home and see this masterpiece. Captivating from both sides, EcoSmart's hero of the room also houses an entertainment system behind its beautiful folding doors.



Read more about this case study at
ecosmartfire.com



Restaurant La Cave, Japan
Model: XS340 x 2

Transforming a simple table top into a dynamic design feature is seamless with EcoSmart's discreet bioethanol burner, which has been cleverly incorporated into a non-combustible platform. The 2.5L ethanol burner delivers a beautifully long-lasting flame - perfect for busy bars and restaurants.



Keio Plaza Hotel, Japan
Model: XL900

Located in Shinjuku, in the very heart of the Tokyo metropolis, this Japanese hotel is known for its architectural design, streamlined facilities and world-class style – the same qualities that can be found in EcoSmart's XL900 fire feature.



Hippo Creek African Grill, Perth Australia
Model: XS340 x 3

Cleverly tailored EcoSmart Burners are helping set the scene for a vibrant new African grill themed restaurant in Perth.

 [Read more about this case study at ecosmartfire.com](http://ecosmartfire.com)



Rising Glen, USA
Model: XL900

A functional room divider becomes a stunning design feature with a peninsular fireplace that helps define the space without dominating it. Glass screens protect the flame from breezes without obstructing the view while the smoke-free flame ensures the white walls and chic furnishings remain unsullied.



Read more about this case study at
ecosmartfire.com

“ Nothing looks or performs as well as EcoSmart. Having a flue-less fireplace also meant a huge amount of savings on space and construction expense. We could place the fireplace in an area that would have been impossible to have a fireplace in if we were to use traditional fireplaces that need to be vented.”

MARCO DIMACCIO, PRINCIPLE DESIGNER
AT PUNCHHOUSE DESIGN GROUP

Private Residence, Santa Monica, California USA
Model: XL900 x 2

The presenter of US documentary show 'Our America' had clear views in the design of her new home – and it has now become the first-ever energy neutral residence in Santa Monica, California.

 Read more about this case study at ecosmartfire.com





The Brindabella, Perth Australia
Model: XL900

This stunning double-sided fire feature is testament to what can be achieved when an ingenious design satisfies both the functional and aesthetic demands of a brief.



The Brindabella, Perth Australia
Model: XL900

This outdoor entertaining area designed by Webb & Brown-Neaves is indicative of their commitment to building every home as if it were their own.



Private Client, Brisbane Australia
Model: XL900

An expansive, exposed terrace of a Brisbane high-rise apartment has been transformed into a stunning, cosy environment with different alfresco living 'zones' complete with an open fire.
Photo: Kylie Hood Photography

 [Read more about this case study at ecosmartfire.com](https://ecosmartfire.com)

“It really is the ideal choice when incorporating fire into a space that needs to be ventless.”

Meaghan Wren,
Meyer Davis



Paramount Hotel, New York USA
Model: XL900 x 3

The lobby centerpiece in New York's Paramount Hotel, which is located in the theatre district, could be described as "dramatic" courtesy of three EcoSmart XL Burners and polished steel sheets.
Photo: Michel Arnaud

 Read more about this case study at ecosmartfire.com



“I put forward the idea of the EcoSmart Fire to bring more warmth and character into the room. I believe fire is engaging and inviting”

Lee har Dcast Le,
enig Ma interi Ors



Enigma Interiors, Australia
Model: XL900

EcoSmart Fire has been cleverly used to create some distinctive kitchen designs – and this one in Queensland, with its emphasis on quality fittings and appliances, is no exception.

 Read more about this case study at ecosmartfire.com



Stilhof Design Centre, Germany
Model: XL900 x 3

Designer fireplaces incorporating EcoSmart Fire are a key component of the innovative Stilhof Showroom in Munich, which has become an international design hub for modern architecture. Photo: G. Hammerbacher



“Fire was incorporated as a dramatic contrasting element to water, as the two traditional elements help create an aesthetic tension and drama at night.”

JASON CAMENZULI,
CLP ARCHITECTURE PTY LTD

Portsea Private Pool Pavilion, Australia
Model: XL900

The elements of fire and water conspire to create a spectacular setting for a floating pool pavilion in Portsea, Victoria, where an EcoSmart XL900 Burner has been used.

Architects: Jason Camenzuli & Peter Collings from CLP Architecture

Builders: KLE Building Group

Joinery: Krueger Shopfitters

Photo: Jason Camenzuli from CLP Architecture



Read more about this case study at ecosmartfire.com

**Private Residence, UK
Model: XL700**

Purpose-designed baffle inserts allow homeowners to regulate and stabilise the flame while simultaneously increasing fuel efficiency.



**Private Residence, UK
Model: XL700**

EcoSmart Fire's elongated flame creates an instant focal – and talking – point for living spaces.



**City Skyline
Austin Texas USA
Model: XL900 x 2**

Two XL Burners set within a sandstone wall perfectly complement the spaciousness of the seamless indoor/outdoor living areas in this Texan home.
Image: Alexander Stross - Strossarts.com



Read more about this case study at ecosmartfire.com



**Buildwise, Australia
Model: XL900**

An increasingly popular trend - integrated units featuring open fire with audio visual systems - is easy with EcoSmart's zero-clearance, flue-less fire solutions.





The Estreal, Japan
Model: XL700 x 4

A sophisticated take on the traditional fireplace, this indoor fire feature utilises four elongated XL Burners to create a captivating conversation pit that attracts guests with its flickering flame and soothing warmth.



Longitude 131°, Australia
Model: XL700

This luxury resort overlooking Uluru in Outback Australia incorporates EcoSmart's fire features in its elevated tents, enabling guests to stay warm while soaking up the celestial serenity.

 [Read more about this case study at ecosmartfire.com](https://ecosmartfire.com)



Flemings Hotel, Frankfurt Germany
Model: XL900

When interior designer Marén Niehoff from HMG MBH & CO. KG was asked to create a modern, stylish and comfortable lobby area for a new five-star Fleming's Deluxe Hotel, she knew EcoSmart's XL900 burner would fit in perfectly.

 [Read more about this case study at ecosmartfire.com](https://ecosmartfire.com)

“I use EcoSmart Fire burners because they’re beautifully and thoughtfully designed, well-built and clean burning, which embodies the sustainability values I adhere to in my work.”

JaMie huff Man,
f urniture Designer



Private Residence, California USA
Model: XL700 x 2

San Diego custom furniture designer Jamie Huffman has long embraced the element of fire, often incorporating them into his innovative designs.



Read more about this case study at ecosmartfire.com


“The EcoSmart fires are just so versatile in terms of how you can use them in a design, they look stylish, have a compact design, aren't messy and don't need to be vented. I'm looking at including them in my next project.”

CRISTINA HOFMAN,
INTERIOR DESIGNER



[m]eatery, Wollongong Australia
Model: XL500 x 4
(Featuring: Twin Feet Fixings and
Custom Fire Screens)

This installation has stood the test of time. Formerly
Rocksalt Bar & Grill, now [m]eatery, the fire re-design
was the only element that was retained in the redesign.

 Read more about this case study at
ecosmartfire.com



Nagoya University of Commerce & Business, Japan
Model: XL900 x 3

A traditional wood-burning hearth is modernised with an EcoSmart fire feature comprised of three linear XL900 Burners that create one long impressive flame.



**The Lake View Toya Nonokaze Resort, Japan
Model: BK5**

EcoSmart provides the essential element of fire – or as the Japanese say, 火災 – in this spa resort surrounded by water and overlooking Nakajima Island. Complementing the serene setting is a quiet, clean-burning flame that uses eco-friendly e-NRG.




“ We loved the simplicity and flexibility of the product’s design, how the ‘system’ worked, and the ease of incorporating it into the fit-out and fixed joinery items.”

KEVIN NG
BRIAN MEYERSON ARCHITECTS, AUSTRALIA



Hurricane's Grill & Bar, Sydney Australia
Models: BK5

 Read more about this case study at ecosmartfire.com



Wyndham Grand Hotel, London UK
Model: BK5

A five-star all-suite hotel in London is setting a new benchmark in luxury accommodation - with EcoSmart Fire providing distinct focal points.



Read more about this case study at ecosmartfire.com



May Fair Bar, London UK
Model: BK5 x 3

Breathing new life into an old fireplace at the acclaimed May Fair Bar in London has been easily achieved with a series of BK5 EcoSmart Burners.



Read more about this case study at ecosmartfire.com



The Long Room, Melbourne Australia
Model: BK5 x 4

Renowned, opulent Melbourne venue The Long Room is defined by its signature bar and series of EcoSmart Burners set into elongated benches. This results in perfect room dividers and talking points.



St James Boutique Hotel, London UK
Model: BK5

Design possibilities are endless when there's no need for a flue or chimney, and the clean burning fuel doesn't emit smoke, soot or ash.

“The fire is safe,
reliable,
contemporary
and elegant.”

REBECCA NG,
JOSEPH PANG DESIGN CONSULTANTS



Westin Hotel, Sydney Australia
Model: BK5

An award-winning five star Sydney hotel has created an intimate lounge bar complete with an open fireplace that's providing a touch of 'home' for the guests.

 Read more about this case study at ecosmartfire.com



Pepe Calderin Design, USA
Model: BK5 x 3

For Miami-based architect Pepe Calderin, discovering EcoSmart Fire was a defining moment, both for him and his high-end clients.





Private Residence, USA
Model: BK5

Vintage fireplaces are seeing a resurgence in popularity within the design community and lending their classic shape to clean burning conversions.



Read more about this case study at ecosmartfire.com



Private Residence, Sydney Australia
Model: BK5

The combination of fire and water makes a dramatic entrance statement for an inner city Sydney home.



Read more about this case study at ecosmartfire.com



Mandarin Oriental Hyde Park, UK
Model: BK5 x 3

Dive in and enjoy the fitness facilities of this 5-star luxurious hotel. A haven of wellbeing has been created by Denton Corker Marshall and features calming fire elements to help nurture physical and spiritual harmony.

“The EcoSmart Fire solution has delivered the ambience of a real open fire without the mess or hassle.”

ANGELIKA LUIBLE-GARBOLDI,
BAU+DESIGN



Allianz Arena, Munich Germany
Model: BK5 x 3

The Allianz Arena in Munich is the location of an amazing new Cooking Lounge - and it's not just the clients' appliances and technology that are making a statement.

 Read more about this case study at ecosmartfire.com



Private Residence, Germany
Model: BK5 x 2

Two EcoSmart Burners perfectly enhance the ambiance of the living area, creating an intriguing fire feature that also provides a subtle separation between adjoining spaces.

Chikusenso Mt Zao Onsen Resort & Spa, Japan
Model: AB8

Situated underneath an impressive bronze Buddhist bell, known as a Bonshō, is EcoSmart's largest round burner, whose dancing flame contrasts beautifully with the solid structure suspended above.





Hamton's Haven Development, Australia
Model: AB3 (Featuring: Loft 3 Fire Screen accessory)

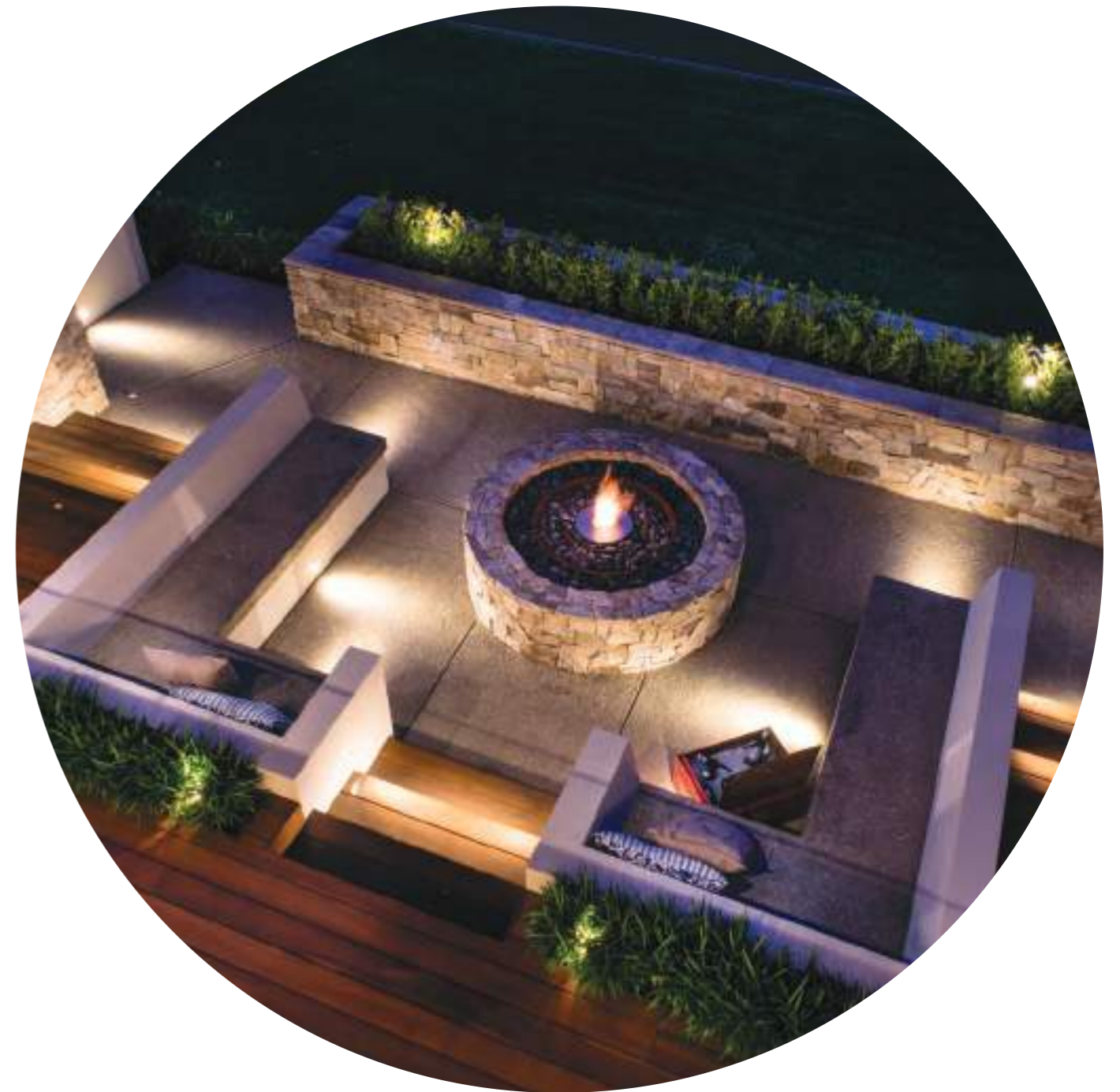


Hamton's Haven Development, Australia
Model: AB3 (Featuring: Loft 3 Fire Screen accessory)

Something old, something new - whilst this installation looks quite traditional, the flue is purely there for form not function. After all, there's nothing to flue when you use clean burning e-NRG bioethanol.

Oswald Down South Home, Perth Australia
Model: AB8

Build a traditional firepit with stone or brick and you've got an instant gathering space.



“ When it came to setting a scene and drawing people in and making them feel comfortable, The EcoSmart Fire was the one and only choice.”

JASON HODGES
GREENART GARDENS, AUSTRALIA



2010 Melbourne International Flower & Garden Show, Melbourne Australia
Model: AB3 (Featuring: Loft 3 Fire Screen accessory)

Australian TV personality and celebrity gardener Jason Hodges fondly remembers sitting around an open fire as a child. Today Jason loves working with EcoSmart Fire to set the scene for many of his landscape designs.



Read more about this case study at ecosmartfire.com



2015 Melbourne International Flower & Garden Show, Melbourne Australia
Model: AB8

Winner of the 2015 Landscaping Victoria Boutique Award, 'Pipe Dream' by Alison Douglas Design used an EcoSmart outdoor fire feature to create a low maintenance sanctuary for small suburban sites.

“It allowed us to use fire within close proximity to water. The clean, modern shapes created flexibility when designing and allowed us to incorporate the piece within an individual garden feature.”



MICHAEL REED
FABRIC TEN, UK

Fabric Ten, UK
Model: AB8

Where water and fire meet: UK design team Fabric Ten showcase a stunning water feature incorporating the EcoSmart AB8 Burner.



Read more about this case study at ecosmartfire.com



The Farmer's Daughter, USA
Model: AB8

EcoSmart's circular burner generates a beautiful large-scale flame at this "fork to farm" restaurant located in Los Angeles, California. The rustic installation complements the bucolic décor while providing an unobtrusive smoke-free flame for patrons.



Commercial Showroom, Sydney Australia
Model: VB2

Regardless of whether it's an Edwardian, Federation, Art Deco or Art Nouveau fireplace, EcoSmart's VB2 Burner will seamlessly slot in – instantly transforming an environmentally polluting wood-burning design into an eco-friendly fire solution.



BUILT-IN

FIREPLACE INSERTS



Scott Salisbury Homes, Australia
Model: 1200DB
Photo: Scott Salisbury Homes



Albert Park, Victoria Australia
Model: 650SS

The flexibility of a flue-less fireplace is very appealing when it comes to designing a space.



Read more about this case study at ecosmartfire.com



Thalassa, Burleigh Heads, Australia
Model: 450SS x2

The EcoSmart 450SS Fireplace is ideal for customised settings – whether indoor or outdoor – with its zero-clearance construction easily integrated within bespoke cabinetry.



Nagoya Showroom, Japan
Model: 450SS

With their flue-less construction and smoke-free design, EcoSmart Fireplace Inserts provide exhibition spaces and furniture showrooms with the warmth and intimacy customers are instantly drawn to.





Southern Ocean Lodge, Kangaroo Island Australia
Model: 650SS

The ability to integrate the streamlined design of the Fireplace 650SS into a contemporary space was the key factor in choosing EcoSmart Fire for the award-winning Southern Ocean Lodge.



Read more about this case study at ecosmartfire.com



Private Residence, Sydney Australia
Model: 650SS

The vibrancy of colour and flame combine perfectly to enhance existing interiors.

“ We used to work mainly with traditional fireplaces, but the flexibility of a flue-less fireplace is very appealing when it comes to designing a space.”



NICHOLAS MURRAY,
NICHOLAS MURRAY ARCHITECTS

Celebrity Chef's Kitchen, Australia
Model: 650SS
A stainless steel EcoSmart Fireplace cleverly incorporated into a Corian island bench in celebrity chef Guy Grossi's kitchen provides ambiance to both the kitchen and adjoining living and dining spaces.

 Read more about this case study at ecosmartfire.com



Kitchens, Sydney Australia
Model: 650SS
A new way of looking at kitchens. This takes capitalising on space to a whole new level.



Nagoya B's Hotel, Japan
Model: 800SS

A hotel with an enviable location in the manufacturing hub of Nagoya. This 4-star establishment boasts a number of inviting features, including EcoSmart's built-in 800SS Fireplace.

Fuorisalone Milan 2010, Italy
Model: 900SS

Savvy furniture designers are using EcoSmart's indoor fire solutions to help create an atmosphere of intimacy within the chaotic and often cavernous warehouse style exhibition spaces.





Private Residence, Sydney Australia
Model: 900SS

Interior designer Lynn Malone took advantage of EcoSmart's renowned installation flexibility to create an integrated solution with custom cabinetry and open fire at its core.



“The fire delivers on the sexiness without the fuss and mess of a traditional fireplace.”

PEGGY LEUNG,
PEGGY LEUNG DESIGN

1 Union Square, Manhattan USA
Model: 900SS

A private lounge in a centrally located New York apartment block is the epitome of style and elegance, with EcoSmart's flue-less, ventless fireplace the ideal solution for high-rise installations.



Read more about this case study at
ecosmartfire.com



Private Residence, Japan
Model: 1000SS

Framed by a stunning, stacked stone feature wall, this single-sided EcoSmart Fireplace includes a purpose-designed baffle insert that allows you to stabilise the flame while simultaneously increasing fuel efficiency.



Vapiano, UK
Model: 1200SS (Featuring: Echo Fixing accessory)


EcoSmart's famous flickering flame creates an inviting atmosphere in this world-renowned Vapiano restaurant, which is recognised for its delicious wood fired pizzas and casual dining style.



“It’s a well-thought-out, contemporary heating solution.”

DIRK VAN NELLESTIJN,
URBAN LANDSCAPES, AUSTRALIA

Private Residence, Western Australia
Model: 1200SS
A 1200SS Fireplace has transformed the outdoor entertaining areas of one Western Australian home, providing warmth, flexibility, and an amazing aesthetic.

 Read more about this case study at ecosmartfire.com



Beachfront Penthouse, Newcastle Australia
Model: 1200SS

Achieving understated elegance inside this beachfront penthouse apartment in Newcastle was the prime objective for Coco Republic's Interior Design Team.

 [Read more about this case study at ecosmartfire.com](http://ecosmartfire.com)



W Residences, Hollywood USA
Model: 1200SS

The W hotels are known across the world for their contemporary architecture and modern chic decor, which in this case is enhanced by a clean-burning EcoSmart Fire.



Private Residence, USA
Model: 1200SS

EcoSmart's zero clearance fireplace designs can be placed directly against combustible materials like wood, walls or panelling – including the television.



Park Lane, London UK
Model: 1200SS

EcoSmart's design simplicity and visual appeal can suit the most intimate of spaces.



“ While our decision was primarily driven by the need for a flueless fireplace, the environmental aspect was definitely a plus.”

SEBASTIAN GIANFERMI
PRIVATE CLIENT, UK

Private Residence, London UK
Model: 1200SS

The slick design of a refurbished London apartment has been perfectly complemented by an EcoSmart Fireplace.

 Read more about this case study at ecosmartfire.com





Chalet Courchevel, France
Model: 1700SS

An EcoSmart Fire solution provides warmth and atmosphere to guests staying at this luxury ski resort in the French Alps.



Fuorisalone 2010, Italy
Model: 1800SS

A series of flames create a dramatic wall of fire at an interior design exhibition in Italy.

“Our EcoSmart Fire was the only source of heating we could use during [Superstorm Sandy] to ensure patients were able to keep warm – and the e-NRG bioethanol was delivered to us reliably throughout this emergency.”

DR LEONARD FARBER
FOUNDER

Farber Centre, New York USA
Model: 1800SS

Creating a sense of warmth and comfort within a state-of-the-art cancer treatment center in New York was a key focus for architect Jeffrey Berman – and the inclusion of an EcoSmart Fire provides the requisite soothing environment.



Read more about this case study at
ecosmartfire.com



Merkmal Showroom, Japan
Model: 650DB

Cleverly designed with versatility and space in mind, the Fireplace 650DB features a double opening that allows you to see the golden flame from two different outlooks.



W Residence, Hollywood USA
Model: 650DB

Creating a stylish segue between two different living spaces, EcoSmart's 650DB Fireplace has a full glass panel on the rear and a partial screen and a front Wind Screen Static on the front.



Equilibrium Bar, Sydney Australia
Model: 650DB

The Equilibrium Bar in Sydney's World Square features cosy, traditionally-inspired lounge areas with see-through open fireplaces.

“Many companies make functional items and many companies can conceptualise cutting-edge design: marrying the two in a way that makes sense, however, is rare. EcoSmart Fire definitely shares that same sensibility.”

FRANK CARFARO,
DESIRON



New York Loft, USA
Model: 900DB

New York designer Frank Carfaro has always had a passion for beautiful design and craftsmanship. When he discovered EcoSmart Fire, he knew his creative values were very much aligned.



Read more about this case study at
ecosmartfire.com



“The fireplace is an important component in the design of the bar. It builds the visual focus when you approach the room and is the centre of attention.”

ANNE MARIA JAGDFELD,
DESIGNER

Shochu Bar, Berlin Germany
Model: 900DB

A see-through EcoSmart Fireplace has helped define the warmth and ambience - and personality - of one of Berlin's top 10 cocktail venues, Shochu Bar.



Read more about this case study at
ecosmartfire.com



Nozomi Views, Japan
Model: 800DB

Providing welcoming warmth for ski resort guests, EcoSmart's double-sided fireplace creates an energy efficient heating solution for eco-conscious accommodation providers.



Private Residence, Japan
Model: 1000DB

Offering unprecedented design and installation flexibility, this rectangular EcoSmart Fireplace can be front or back fitted within custom cabinetry where viewing a fire from both sides enhances two adjacent environments.

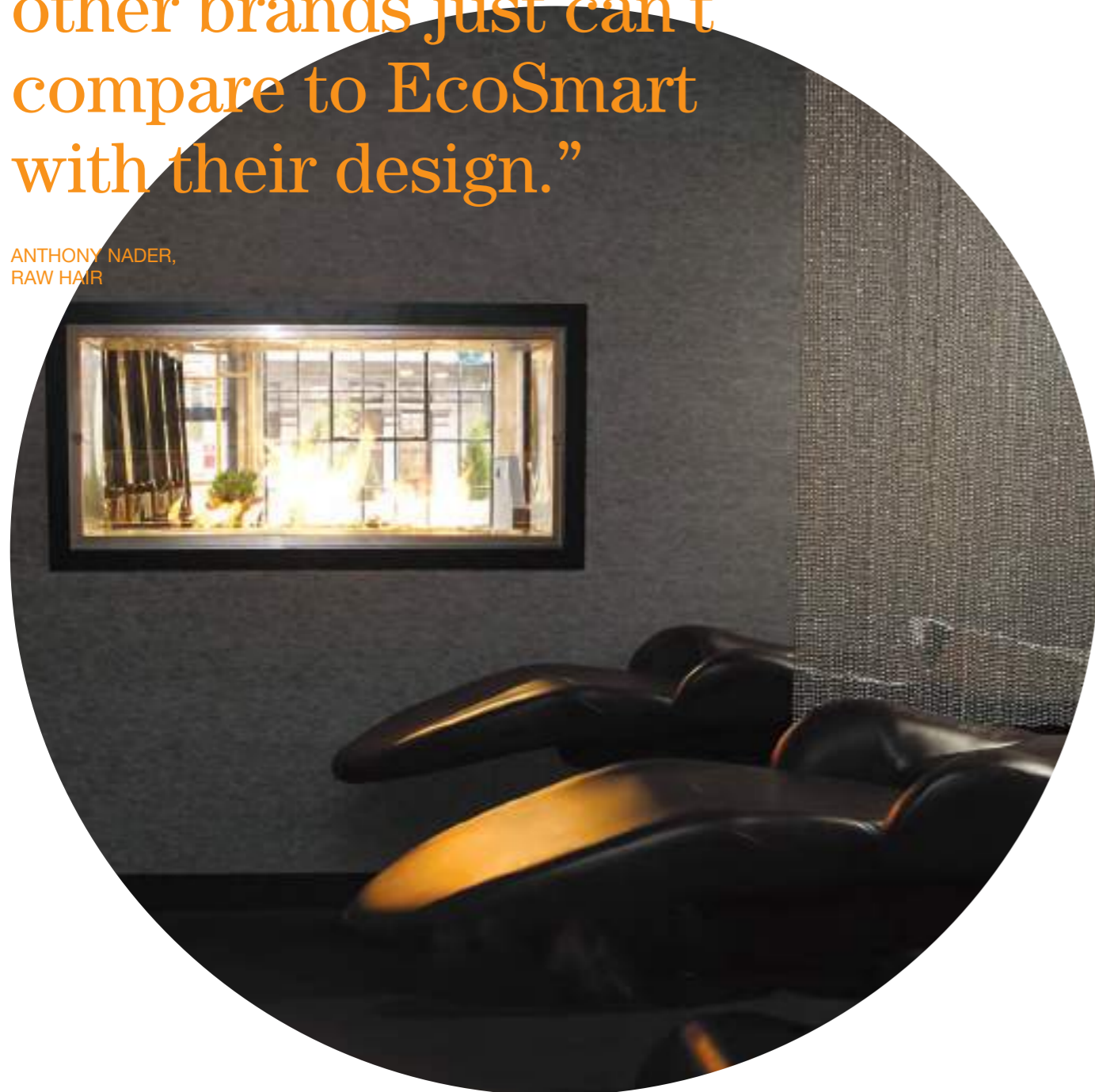


Scott Salisbury Homes, Australia
Model: 1200DB

A great example of connecting the indoor and outdoor spaces. This two-way Fireplace can be seen and experienced from the lounge and outdoor areas simultaneously.
Photo: Scott Salisbury Homes

“ You pay for the quality of the product, and other brands just can’t compare to EcoSmart with their design.”

ANTHONY NADER,
RAW HAIR



Raw Hair, Sydney Australia
Model: 1200DB

Opulent, with raw details and industrial design features, this new Sydney salon, owned by celebrity hair stylist Anthony Nader, needed a fiery focal point that encapsulated quality, contemporary style and a polished, raw finish.

 Read more about this case study at ecosmartfire.com





St. Peter's Renaissance Vinoy, USA
Model: 1200DB

A double-sided Fireplace introduces sound separation for guests at the same time as creating a window that visually connects the spaces.



Oral Roberts University, USA
Model: 1800DB

Oral Roberts University has created a perfect spot for reading a book or gathering with friends on campus.
Photo: © Melissa Lukenbaugh



Crowne Plaza Hotel, Terrigal Australia
Model: 1800DB

An impressive see-through stone and stainless steel fireplace with a trio of EcoSmart Burners create a sense of warmth and style in this resort hotel on the NSW coast.



Private Residence, Japan
Model: 1100CV





CHOCOLATE BY THE BALD MAN.
MAX BRENNER

Max Brenner Head Office, Australia
Model: 1100CV

Max Brenner is renowned for yummy chocolate and feeling good, which is the perfect match for the warm welcome guests receive when visiting their new corporate headquarters.



Model: FLEX68PN.BXR
(Featuring: Decorative Steel Logs)

With three transparent sides our Peninsula fireplaces provide the perfect solution to heat multiple rooms.





Model: FLEX158DB

Flex Double Sided Fireplace's see-through design injects warmth and ambiance in two adjacent rooms.



Model: FLEX68LC.BXL

(Featuring: Decorative Steel Logs)

Create a striking addition to a feature wall in any space, indoor/outdoor/residential or commercial.



Model: FLEX86DB.BX1
(Featuring: Decorative Steel Logs)

Accessorised with brass metal logs this double sided firebox with additional decorative is a classy way of connecting two living spaces.



Model: FLEX68BY.BXL
(Featuring: Decorative Steel Logs)

Bay Fireplaces provide an alluring focal point when viewed from multiple vantage points.

Model: FLEX158SS.BX2
(Featuring: Decorative Steel Logs)

Decorative side boxes are a unique feature of the Flex Series.





Model: FLEX50RC

Make better use of an available corner setting in your floorplan with an easy to install Corner Fireplace.



Model: FLEX50SS

Add value to your home with an open fireplace. All of the fuel is housed within Flex's self-contained burner so you don't have to run a gas line or electric wires through your walls. And because e-NRG bioethanol is clean-burning you don't need a flue or a chimney.

BUILT-IN GRATE INSERTS





Private Residence, Sydney Australia
Model: Scope 700

Converting an old Federation fireplace into a modern, eco-friendly fire feature has never been easier thanks to EcoSmart's Scope 700 Grate.



Read more about this case study at
ecosmartfire.com



Private Residence, Australia
Model: Scope 700

EcoSmart's clean-burning bioethanol fuel ensures valuable artworks are free from the damaging effects of soot, smoke and ash.




Private Residence, Japan
Model: Scope 700

Sharp, clean lines and seamless integration are the hallmarks of modern architecture – and EcoSmart Fire.

“I wanted to breathe new life into the fireplace and convert it in a way that was eco-friendly.”

PRIVATE CLIENT

Private Residence, Sydney Australia
Model: Scope 700

 Read more about this case study at ecosmartfire.com



BlackStump, Sydney Australia
Model: Custom Grate

A customised grate inserted into a specially made plinth creates a distinctive focal point in an Australian steakhouse restaurant.



Amangiri Resort, Utah USA
Model: Custom Grate

EcoSmart's Custom Grate seamlessly installed in a bench at the Amangiri Resort in Utah doesn't detract from the magnificent canyon views.



Casa Bianca Cafe, Japan
Model: Scope 340

EcoSmart's Scope 340 is a compact grate ideal for installations where space is at a premium.

FREESTANDING
**CENTRE
PIECES**





Commercial Space, Japan
Model: Base
(Featuring: Square Fire Screen S530)

This multi-function table gives you the best of both worlds – a coffee table combined with an environmentally-friendly fire pit.



The Grounds, Alexandria
Model: Stix

Stix consists of varying-sized tubular stainless steel 'sticks', creating a visually striking and practical fire for indoor and alfresco environments.



“The EcoSmart Stix fires are very visually effective on their own, but they are even more so when placed together in a group.”

REBECCA OTTO
SIMEONE DEARY DESIGN GROUP

Allegro Hotel, Chicago USA
Model: Stix x 3

Drama, glamour, music and movement – these are just some of the theatrical elements the award-winning Simeone Deary Design Group captured in their re-design of the boutique Allegro Hotel in the heart of downtown Chicago.



Read more about this case study at
ecosmartfire.com



Stilhof Showroom, Germany
Model: Stix

Creating a cosy living space to showcase the design benefits of the EcoSmart Stix is the premise behind the Stilhof Showroom in Munich.




Private Residence, Japan
Model: Stix

What looks like stacked campfire sticks is actually a sophisticated piece of fire furniture.



New American Home, USA
Model: Stix x 2

Making a distinctive architectural statement can be as simple as adding a freestanding fire.

 Read more about this case study at ecosmartfire.com



Commercial Space, Japan
Model: Cyl

With an AB3 ethanol burner at its core, Cyl delivers up to 11 hours of burning time - perfect for illuminating an event or just enhancing the ambiance.





Private Residence, Japan
Model: Wharf

Blending the simplicity of an outdoor fire pit with the functionality of a standalone table, EcoSmart's Wharf fire table adds style and practicality to any architectural environment.





Private Residence, Japan
Model: Wharf

Ideal for courtyards, patios, pool decks and terraces, Wharf's all-weather, earthy design evokes the atmosphere of an open flame minus the by-products associated with a wood-burning fireplace.



Private Residence, Japan
Model: Mini T

Small in stature at just 462mm [18in] high, the freestanding, portable Mini T is the robust solution for illuminating spaces and creating warmth and ambience.





KimberModern Hotel, Austin Texas USA
Model: Mini T

EcoSmart's signature clean lines perfectly complement the design style of this outdoor bar, with Mini T fires providing a chic enhancement to the contemporary aesthetics.



Private Residence, Sydney Australia
Model: Mini T x 2

EcoSmart's Mini T is a stainless steel and glass fire feature perfect for outdoor entertaining, used either as accents for garden landscapes or as functional lighting along pathways and step areas.



Private Residence, Japan
Model: Tower

Standing elegantly at just under one metre, Tower creates an instant talking point when entertaining outdoors. 360° height-adjustable articulating feet help you achieve a perfectly level and stable position before operating.

Commercial Space, Japan
Model: Lighthouse Series

Grouping fire features of differing heights add a sculptural element to outdoor spaces, and creates a stunning entrance for restaurant guests and bar patrons.



Private Residence, Sydney Australia
Model: Lighthouse Series

As the name evokes, EcoSmart's Lighthouse Series provides a clear and commanding light – perfect for illuminating outdoor areas and providing an impressive focal point for any alfresco location.





Commercial Space, Japan
Model: Lighthouse 150 x 3

Made with weatherproof materials including toughened glass and classic concrete composite, EcoSmart's Lighthouse fire furniture features an efficient AB3 ethanol burner, which burns for up to 11 hours.



Private Residence, USA
Model: Ayre

The shallow dish that surrounds Ayre's low profile EcoSmart burner can be filled with decorative stones or other fire-rated materials.





Okinawa Resort, Japan
Model: Ayre

Private Residence, USA
Model: Ayre

Fashioned from handcrafted concrete composite, the Ayre outdoor fire has the strength and durability of traditional cement at only a fraction of the weight.





Chelsea Flower Show, UK
Model: Glow

EcoSmart Fire's signature clean lines are designed to fit within a modern architectural space, while enhancing the contemporary aesthetics of today's living environments.



Private Residence, Japan
Model: Glow (featuring Cyl)

Sitting side by side in this outdoor patio the large Glow and small Cyl models are a great combination. The absence of restrictive cables or gas connections means these full portable models can be enjoyed virtually anywhere.



Private Residence, Japan
Model: Glow

Elegantly understated and able to fit into a variety of settings, Glow's soft curves and industrial materials create a modern centrepiece for outdoor entertaining.





The Grounds, Sydney Australia
Models: MIX Fire Bowls

MIX's simple, elegant shape combined with entrancing flame delivers generous amounts of warmth and ambience.



New American Home, USA
Model: MIX 850

The elements of fire and earth create a simple yet captivating atmosphere.





Private Residence, Japan
Model: Ark
(Featuring: Round Fire Screen R650)

A curvaceous conversation pit that brings friendship and fire together in one slick mix.





Commercial Space, Japan
Model: Ark x 3

With a wide lip to perch a drink on, and an unobtrusive shape that suits all types of décors and settings, EcoSmart's Ark fire furniture creates an instant gathering space.

FREESTANDING WALL FEATURES





Private Residence, Western Australia
Model: Aspect

Quiet, clean, warm and intriguing - EcoSmart Fire makes for the perfect house guest.





Private Residence, Japan
Model: Aspect

Clean lines define Aspect's simple and stylish rectangular-shaped fireplace, with a clear focus on enhancing the minimalist decor and earthy tones.



Private Residence, USA
Model: Aspect

Powered by clean burning e-NRG bioethanol fuel, EcoSmart's indoor fire solutions provide a beautifully vibrant orange flame that's free from the mess and soot associated with traditional fireplaces.



Merkmal Showroom, Japan
Model: Cube

The classically shaped Cube fireplace fits effortlessly into a range of architectural environments adding instant warmth and ambiance.



Private Residence, Japan
Model: Cube

Custom upholstered in leather the Cube is transformed in this residential home.



Milan Fair 2008, Italy
Model: Cube

Bespoke Swarovski crystal-embellished fireplace takes pride of place within various settings at Milan Fair.



Private Residence, Seattle USA
Model: Fusion

EcoSmart Fire brings an organic element to spaces dominated by man-made materials such as concrete, glass, plastic and stainless steel.



Private Residence, Japan
Model: Fusion

Fusion's geometric design creates a striking centrepiece in this Japanese home while its see-through effect makes it a functional focal point between room elements.



Private Residence, Japan
Model: Ghost



Private Residence, Japan
Model: Ghost



Private Residence, Japan
Model: Ghost
The EcoSmart Ghost is designed with a futuristic appeal to enhance contemporary décors.



Private Residence, Japan
Model: Ghost

No need for cabling, gas connecting, chimneys or flues provides creative freedom for homeowners and interior designers.



Private Residence, Japan
Model: Ghost

Glass surrounds create a disappearing effect when EcoSmart's Ghost fireplace is placed in front of windows, doors and feature walls.



“Fire was incorporated in the interior to add prominence and warmth to the contemporary design. This created a focal point while creating a more welcoming space.”

LYNDSAY JANSEEN
BLUE HERON INTERIOR DESIGN



New American Home, USA
Model: Ghost

The reflective glass panels of EcoSmart's Ghost fireplace provides 360-degree views of the dancing flame.



Read more about this case study at
ecosmartfire.com



Lumiere, Sydney Australia
Model: Igloo

Made entirely of glass and stainless steel, EcoSmart's Igloo fire feature is a sleek and modern update to the traditional fireplace.



“For our home the particular design constraints did not allow for a flued fireplace system. [The EcoSmart Fire] was the perfect complement to my vision.”

LUGI PREZIUO,
BDA BUILDING SOLUTIONS, AUSTRALIA



Private Residence, Sydney Australia
Model: Igloo

Renowned Australian builder and designer Luigi Prezioso explains why he chose an EcoSmart Fire to heat his own home on Sydney's Northern Beaches.



Read more about this case study at
ecosmartfire.com



Commercial Space, Japan
Model: Igloo



Private Residence, Japan
Model: Igloo
Taking fire design to new heights. The Igloo works perfectly with this dazzling city skyline.



Milan Fair 2008, Milan Italy
Model: Vision

Setting the scene with style at the famed Milan
Furniture Fair.





Merkmal Showroom, Japan
Model: Vision

One of EcoSmart's bigger models, Vision is a fantastic portable fireplace for large-scale residential and commercial spaces.



Cottage Lösch für Freunde, Germany
Model: Vision

Contemporary elegance within the music room of a boutique German hotel.
Photo: © Lösch für Freunde



Private Residence, Australia
Model: Vision

EcoSmart's double-sided fireplace designs create a small and subtle room partition, giving homeowners the flexibility to relocate them when they redecorate.



Private Residence, Sydney Australia
Model: Vision

Like all EcoSmart models, environmentally friendly e-NRG bioethanol powers this contemporary fireplace feature.



Private Residence, Japan
Model: Vision

The Vision, custom upholstered in leather, perfectly complements the views from this high rise apartment.



Commercial Space, Japan
Model: Oxygen (featuring optional Stone Base)

Epitomising elegance and modernity, EcoSmart's Oxygen designer fireplace combines smooth stainless steel with a low-line Caesarstone® shelf.

OPTIONAL

SCREENS & ACCESSORIES



The C Fire, Australia
Accessories: Twin Feet Fixings & Custom Fireplace
Model: BK5



2015 Melbourne International Flower & Garden Show, Melbourne Australia
Accessory: Twin Feet Fixings
Burner: XL900

Used to stabilise the flame in windy conditions and add further safety and comfort, EcoSmart's Firescreen accessories are made with toughened glass, stainless steel fittings and frosted polycarbonate connectors.



Commercial Space, Japan
Accessories: Plasma Fire Screen & Stone Base
Model: Oxygen

Featuring elegant circular handles and classic stainless steel feet, the Plasma Fire Screen provides additional safety and stability to your EcoSmart fireplace.



Accessory: Decorative Steel Logs
Model: FLEX68DB.BX1

Made from stainless steel with a patina finish, add a finishing touch to your installation with these stunning decorative logs. Available in Brass or Copper.



Commercial Space, Japan
Accessory: Ghost Fire Screen
Model: Ghost

The Ghost Fire Screen attaches seamlessly to the front face of the Ghost Portable Fireplace.



Commercial Space, Japan
Accessories: Station (left), Base with Fire Screen (middle) & Grid (right)

Showcasing the broad spectrum of accessories available, this setting features side table, coffee table and wind screens that perfectly complement EcoSmart's fire designs.



The C Fire, Australia
Accessories: Twin Feet Fixings & Custom Fireplace
Model: BK5

Available in a variety of shapes and sizes, EcoSmart's stylish Fire Screens reduce fuel consumption by minimising the impact of wind on the flame.





Moama Bowling Club, Australia
Accessory: Loft 8
Model: AB8

The sumptuous setting in this popular community hotspot is complemented by EcoSmart's stainless steel indoor fire feature, which works beautifully with the circular conversation pit.
(Image indicative only)



Merkmal Showroom, Japan
Accessory: Loft 3
Model: AB3

This minimalist table top installation was achieved through the use of a Top Tray, which provides a compulsory barrier between the burner itself and the timber of the table. The Loft Fire Screen adds to the reflective beauty of the flame at the same time as enhancing flame stability.
(Image indicative only)

WHY e-NRG FUEL?



BEST FLAME CLEAN BURNING LOWEST ODOUR LONGEST BURN TIME ORDER ONLINE

Achieving a beautiful, vibrant flame in your ethanol fireplace is easy when you use the right fuel.

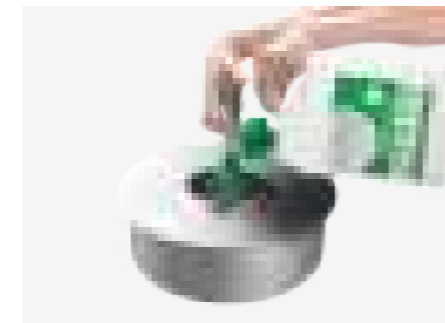
Bioethanol is pure alcohol. The combustion of bioethanol is clean, which makes it an efficient and effective source of heat because there is no soot, ash or harmful emissions that need to be extracted through a flue - meaning all the heat stays in your room.

Specifically packaged and labelled for use in liquid ethanol fireplaces, e-NRG Bioethanol is formulated with the perfect blend of ingredients to give you a brilliant orange flame in your flue-less fireplace.

Fire up your bioethanol fire with the highest quality, cleanest burning bioethanol available, visit e-NRG.com



Clean Burning
e-NRG produces no harmful emissions - just heat, steam and carbon dioxide, which is reabsorbed by plants.



Fast Refilling
e-NRG bottles pour 8 times faster than the competition.

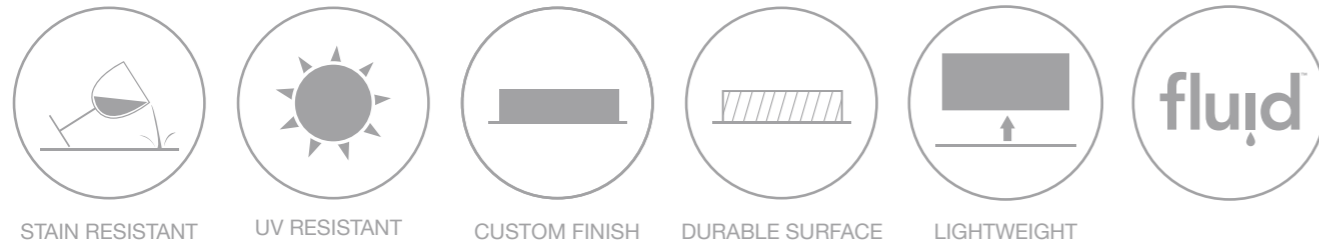
Packaged to Perform
e-NRG offers the safest and most efficient fueling process on the market.



Flame Arrester
The bottles are fitted with a flame arrester for safe refilling.

e-NRG is supported by an operational procedure to ensure it's used in the safest way.

FLUID™ CONCRETE TECHNOLOGY



Timeless Pieces from EcoSmart Fire

EcoSmart fire features are synonymous with quality, substance and enduring style and now those same qualities can be applied to our extensive concrete collection.

Incredibly strong yet relatively lightweight, EcoSmart's concrete products incorporate revolutionary Fluid™ Concrete Technology, which is eight times the tensile strength of common Portland concrete. Fluid features a stain and impact-resistant barrier that protects the concrete from environmental weathering – even under extreme conditions and long UV exposure.

Fluid's customised curing process allows each EcoSmart piece to rest and set in quality controlled conditions, producing a consistently beautiful indoor and outdoor collection of designer concrete that last longer than traditional composites.

Visit fluidconcrete.com



AROUND THE WORLD

EcoSmart Fire is represented by an extensive network of distributors, resellers and agents around the world. If you can't find who you are looking for, or someone close to you, contact EcoSmart Fire Head Office and we will personally assist you with your enquiry.

Head Office

Showrooms 3 & 4, 40-42 O'Riordan Street
Alexandria NSW 2015 Australia
T: +61 2 9997 3050
E: info@ecosmartfire.com

ECOSMART FIRE IS DESIGNED AND MANUFACTURED BY THE FIRE COMPANY.

Visit ecosmartfire.com

Interested in representing or retailing EcoSmart Fire in your country?
Contact your local distributor or our Head Office today.

Reproduction of this catalogue in any manner, in any language, in whole or in part without prior written permission is prohibited. The Fire Company Pty Ltd reserves the right to correct any errors or misprints. All product specifications and data are subject to change without notice and believed to be correct at the time of publication. The Fire Company Pty Ltd, its affiliates, agents, and employees, and all persons acting on its or their behalf (collectively, "The Fire Company"), disclaim any and all liability for any errors, inaccuracies or incompleteness contained herein or in any other disclosure relating to any product. The Fire Company disclaims any and all liability arising out of the use or application of any product described herein or of any information provided herein to the maximum extent permitted by law. The product specifications do not expand or otherwise modify The Fire Company P/L's terms and conditions of purchase, including but not limited to the warranty expressed therein, which apply to these products. No license, express or implied, by estoppel or otherwise, to any intellectual property rights is granted by this document or by any conduct of The Fire Company. Customers using or selling The Fire Company products not expressly indicated for use in such applications do so entirely at their own risk and agree to fully indemnify The Fire Company for any damages arising or resulting from such use or sale. Please contact authorised personnel from The Fire Company to obtain written terms and conditions regarding products designed for such applications. International Patent Pending - Trademarks Pending - All Designs Registered. V0917

ECO
SMART
FIRE
.COM

ecosmart[™]
Fire