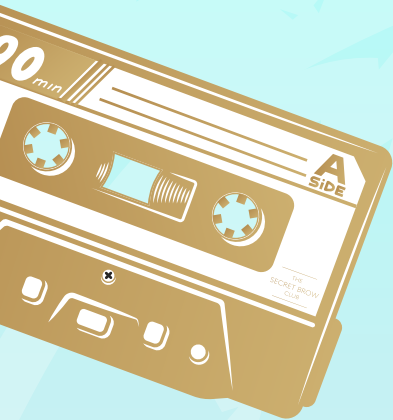


CANDY Freeze



“
The best investment is
in the tools
of one's own trade.
”

LET'S TALK DETAILS!

THE
SECRET BROW
CLUB



@thesecretbrowclub

What is the product?

We are so proud to be Introducing our NEW ground breaking product
CANDY FREEZE BROW FREEZING GEL
INTENSE HOLD
CANDY FLOSS SCENT

This Brow Gel not only smells like a dream, with our carefully selected Candy Floss Scent, But our intense, pinky coloured Brow Gel will keep your brows in place with that sought after lamination effect, without the chemicals, for up to 24 hours.

What's more, NO water is required, our Gel is ready to go straight from the pot,
Perfect for brows on the go!

The most intense holding brow gel you will find on the market, Your Clients will be begging you for more.

This is why we want to offer you the chance to retail this hot off the press Brow Gel in your salons and stores with optional discount packages available.

Let's talk benefits

- ✂ NO WHITE CAST OR RESIDUE
- ✂ INTENSE 24 HOUR HOLD
- ✂ SUBTLE CANDY FLOSS SCENT
- ✂ CLEAR GEL - SUITABLE FOR ALL SKIN TONES
- ✂ NO WATER ACTIVATION REQUIRED

Candy Freeze can be used to replicate the results of a brow lamination treatment, or can be used as a natural brow hold that will keep those unruly, flyaway brow hairs in place all day long giving a more neater, structured effect with no movement. Our intense brow gel is so versatile, It will allow you to style your brows into any style that is best suited for you.



Directions of use:

DIP YOUR BROW GROOMER INTO THE BROW GEL LIGHTLY COATING THE BRISTLES WITH THE PRODUCT, BRUSH THROUGH YOUR BROWS APPLYING PRESSURE FLICKING UPWARDS AND OUT TO CREATE YOUR DESIRES LOOK.

CANDY FREEZE CAN BE WORN ALONE OR WITH YOUR FAVOURITE BROW POWDER, PENCIL OR POMADE. APPLY CANDY FREEZE BEFORE MAKEUP FOR BEST RESULTS.

INTENSE HOLD, CANDY FREEZE WILL LAST UP TO 24 HOURS IF YOU AVOID CONTACT WITH STEAM/WATER.

TO REMOVE, RINSE WITH WARM SOAPY WATER.

