

Y98

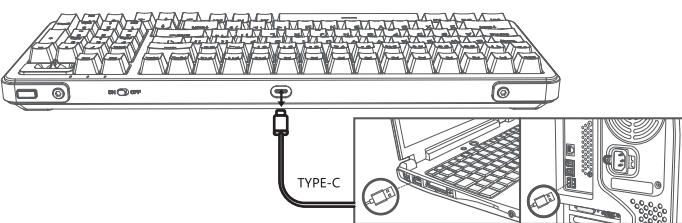
BT 3.0/BT 5.0/2.4G/Wired Three Mode Mechanical Gaming Keyboard
Co-created by ProtoArc x RoyalAxe

USER MANUAL

Charging Guide



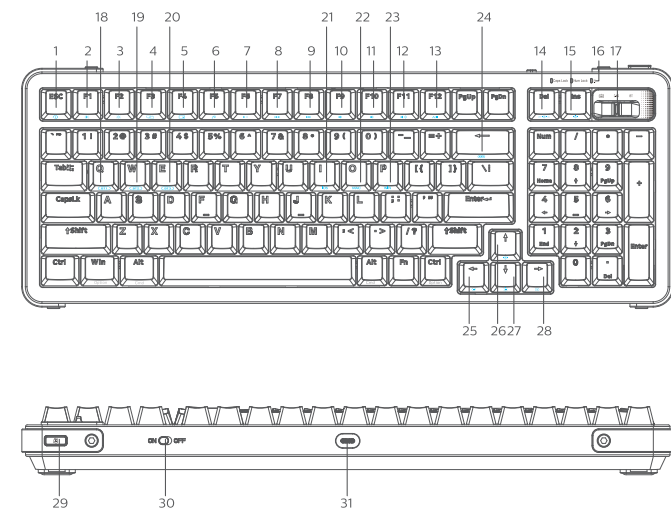
1. Low voltage indicated by red flashing light.



2. Insert Type-C into keyboard, USB into computer to charge, red light stays on during charging.
3. Green light indicates charging is complete.

Notice:
During charging, "ON/OFF" switch has no control, power comes directly from charging cable.

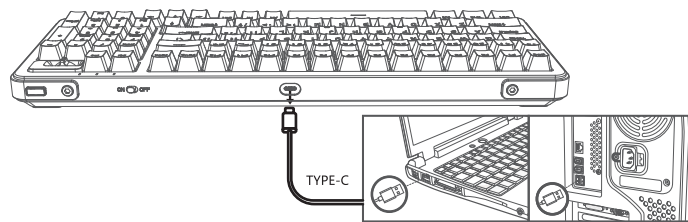
English:



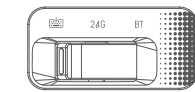
Function overview of the keyboard

- Fn + : Reset
- Fn + : Screen brightness -
- Fn + : Screen brightness +
- Fn + : Multi screen display
- Fn + : Back to the desktop
- Fn + : Media Player
- Fn + : Play/Pause
- Fn + : Prev song
- Fn + : Next song
- Fn + : Mute
- Fn + : Volume -
- Fn + : Volume +
- Fn + : Input method switching
- Fn + : Light switch
- Fn + : Switch the backlight mode
- Cap Lock / Num Lock indicator
- Num Lock / Num Lock indicator
- Low battery indicator
- Wired mode / 2.4G wireless mode / BT Bluetooth mode
- Fn + : Bluetooth mode 1
- Fn + : Bluetooth mode 2
- Fn + : Bluetooth mode 3
- Fn + : Switch to IOS system
- Fn + : Switch to MAC system
- Fn + : Switch to WIN system
- Fn + : Monochromatic light switching
- Fn + : Backlight frequency slows down
- Fn + : Backlight brightness increase
- Fn + : Backlight frequency slows down
- Fn + : Increased backlight frequency
- 2.4G receiver
- ON/OFF power switch
- Type-C charging/wired interface

Wired Connection



1. Connect the TYPE-C end of the charging cable to the keyboard and the USB end to your computer.



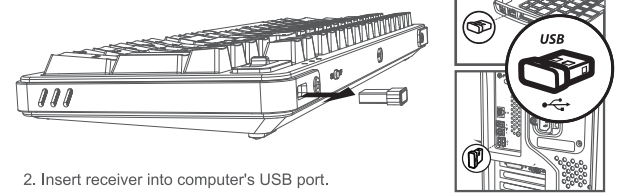
2. Rotate to Wired Mode, indicator will flash for successful connection.

Note: "ON/OFF" switch has no function in Type-C wired mode.

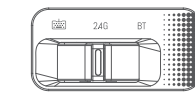
2.4G Connection



1. Turn power switch ON.

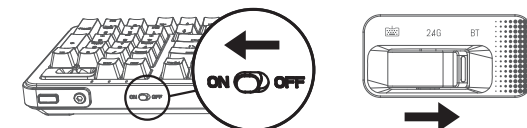


2. Insert receiver into computer's USB port.



3. Rotate knob to 2.4G mode, indicator flashes twice for successful connection.

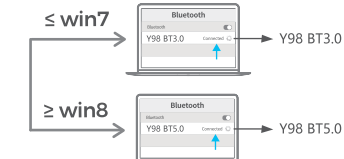
Bluetooth Connection



1. Turn power switch ON, rotate knob to BT mode, indicator flashes 3 times for successful setup.



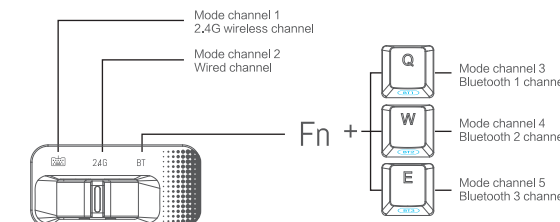
2. Press Fn + Q for 3-5 secs to enter Bluetooth pairing mode, quick flashing indicator.



3. Turn on computer's Bluetooth, search and select "Y98 BT3.0" or "Y98 BT5.0", pair until connection complete.

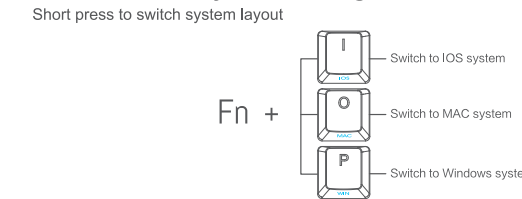
Notice:
• Windows 7 and below do not support Bluetooth 5.0.
• Device number for BT 3.0 is "L98 BT3.0" for BT 5.0 is "L98 BT5.0."

Mode Switching Method of The Keyboard



1. Mode Channel: The keyboard has 5 channels (BT2, BT3, 2.4G, wired), and can connect up to 5 devices simultaneously.
2. Mode Rotary Knob: To switch between modes, turn the mode rotary knob between Wired/2.4G/BT. To switch between BT1, BT2, and BT3 Bluetooth channels, press Fn + Q, W, or E.

IOS / Mac / Win layout switching



Note: the default setting is Windows layout.

Custom Drive

For custom mode please go to the following URL to download official driver.
<https://www.protoarc.com>

Note: Driver only supports customization and 2.4G mode.

Technical Specifications

Connection methods: Wired, 2.4GHz, Bluetooth 3.0, Bluetooth 5.0
Wireless range: 2.4GHz (15 meters), Bluetooth (10 meters)
Current and voltage: 5V, 500mA (max)
Keys: 98
Keycap material: PBT
Mechanical switch lifespan: 100 million times
Lithium Battery: 4000mAh
Keyboard size: 392x145x41mm
Weight: 1465g ± 20g

System Requirements

- 1x USB port
 - Bluetooth 3.0 or 5.0
 - Compatible with Windows 7/8/10, Android 3.2 or later, Mac OS 10.5 or later.
- Note: Multimedia functions are partially invalid in different OS versions.

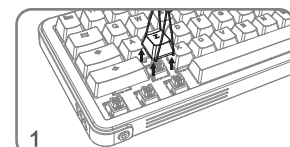
Troubleshooting

1. Check that the USB wireless receiver is properly connected to the computer's USB port.
2. Ensure the computer meets the minimum system requirements.
3. If the product is too far from the receiver, bring them closer for better performance.

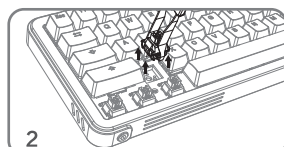
Attention

1. Clean product with dry and soft cloth.
2. Do not disassemble by force.
3. Avoid exposure to rain, sun, and fire.
4. Do not rinse with water.
5. Charge keyboard only using USB interface of computer, not with charger.
6. Keep liquid away from product to prevent short circuit.

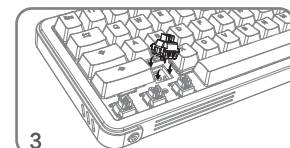
Shaft Replacement



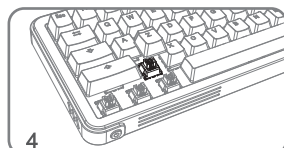
1 Use a keycap puller to remove the key.



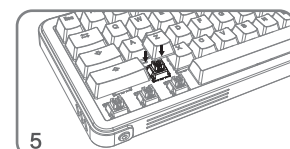
2 Use a switch puller to remove the switch.



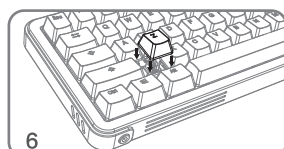
3 Align the holes of the replacement switch with the installation position.



4 Insert the new switch into the slot.



5 Firmly press the new switch to secure it.



6 Reinstall the keycap and use as normal.

Important safety and compliance information

Disposal of product and packing material
Waste Electrical and Electronic Equipment-WEEE
This product must not be thrown away with household waste. Instead, dispose of it properly by taking it to a designated collection point for waste electrical and electronic equipment (WEEE) recycling. This helps conserve natural resources and ensures proper recycling that protects health and the environment. For recycling location information, please reach out to your local city office, household waste disposal service, or the store where you purchased the product.

CE Declaration of Conformity
This device complies with Electromagnetic Compatibility Directive (2014/53/EU), RoHS Directive (2011/65/EU), and Radio Equipment Directive (2014/53/EU). Testing shows compliance with harmonized standards for Information Technology Equipment as outlined in the EU Official Journal.

Federal Communications Commission (FCC) Notice
This equipment has been tested and complies with Class B digital device limits under Part 15 of the FCC Rules. It is designed to provide reasonable protection against interference in a residential setting. If not installed and used as instructed, it may cause radio interference.

If the equipment interferes with radio or TV reception, the user should try to resolve it by:
• Reorienting or relocating the receiving antenna.
• Increasing the distance between the equipment and receiver.
• Plugging the equipment into a different circuit than the receiver.
• Consulting the dealer or a radio/TV technician.

Unauthorized changes or modifications may render the user unable to operate the equipment.

THIS CLASS B DIGITAL DEVICE COMPLIES WITH CANADIAN INTERFERENCE-CAUSING EQUIPMENT REGULATIONS.

FCC Compliance Statement
This device complies with Part 15 of the FCC Rules and operates within the following two conditions:
1. This device must not cause harmful interference.
2. This device must accept all interference received, including any that may cause undesired operation.

Commission Fédérale de la Communication
Cet équipement a été testé et déclaré conforme aux limites numériques de classe B aux termes de l'article 15 des règles de la FCC. Ces limites sont conçues de façon à fournir une protection raisonnable contre les interférences nuisibles dans le cadre d'une installation résidentielle.

CET appareil produit, utilise et peut émettre des hyperfréquences qui, si l'appareil n'est pas installé et utilisé selon les consignes données, peuvent causer des interférences nuisibles aux communications radio. Cependant, rien ne peut garantir l'absence d'interférences dans le cadre d'une installation particulière. Si cet appareil est la cause d'interférences nuisibles pour la réception des signaux de radio ou de télévision, ce qui peut être détecté en fermant l'équipement, puis en le remettant en fonction, l'utilisateur pourrait essayer de corriger la situation en prenant les mesures suivantes:
• Reorienter ou déplacer l'antenne de réception.
• Augmenter la distance entre l'équipement et le récepteur.
• Brancher l'équipement sur un autre circuit que celui utilisé par le récepteur.
• Demander l'aide du marchand ou d'un technicien chevronné en radio/télévision.

Toutes modifications n'ayant pas reçu l'approbation des services compétents en matière de conformité est susceptible d'entraîner à l'utilisateur l'usage du présent équipement.

CET APPAREIL NUMÉRIQUE DE LA CLASSE B RESPECTE TOUTES LES EXIGENCES DU RÈGLEMENT SUR LE MATÉRIEL BROUILLÉUR DU CANADA.



Dear customer,
Thank you for purchasing a ROYALAXE product. To ensure a reliable after-sales service, please carefully read the following instructions. This product warranty is valid for one year from the date of purchase (as indicated on the return receipt and invoice).

- The following are not covered by this product's after-sales service:
(1) Invalid warranty card/invoice or altered warranty without authorization.
(2) Inconsistency between warranty card/product model & serial number, or absence of distributor seal.
(3) Altered, removed or made illegible model, serial number or production date code.
(4) Excessive use outside intended purpose (e.g. commercial non-stop use).
(5) Damage from not using the product according to instructions.
(6) Damage from using pirated software or computer virus.
(7) Damage from accident, abuse, or unauthorized repair.
(8) Force majeure damage.
(9) Improper operation due to accidental disconnection, signal interference, or other external factors.
(10) Normal wear and tear or consumable parts.
(11) Improper function due to use in a country where product wasn't designed, manufactured or approved.

For defective or non-functioning products, please contact your local retailer. The warranty card with the matching serial number is required for after-sales service and technical support. Keep the warranty card safe. Professional and quality services will be provided upon presentation of the card.

Commodity Information	Name	
	Place of origin	
	Model No.	
User info.	Serial No.	
	Name	
	Address	
	Tel.	
Sales info.	Postcode	
	Retailer	
	Address	
	Tel.	
	Postcode	
Maintenance info.	Date	
	Invoice No.	
	Stamp & Signature	
	Signature	

Dear customer, the above information is to be filled in by the seller. Please cooperate with us. Thank you!
The following information shall be filled in by the maintenance agency and returned to the customer.



Customer Support :
Email: support@protoarc.com

Co-created by ProtoArc x RoyalAxe
Manufacturer: Dongguan Lingjie Electronics & Technology Co., Ltd
Address: No. 23 Zhenxing North Road, Xiegang Town, Dongguan, Guangdong, China
Web: <https://www.protoarc.com>



Made in China