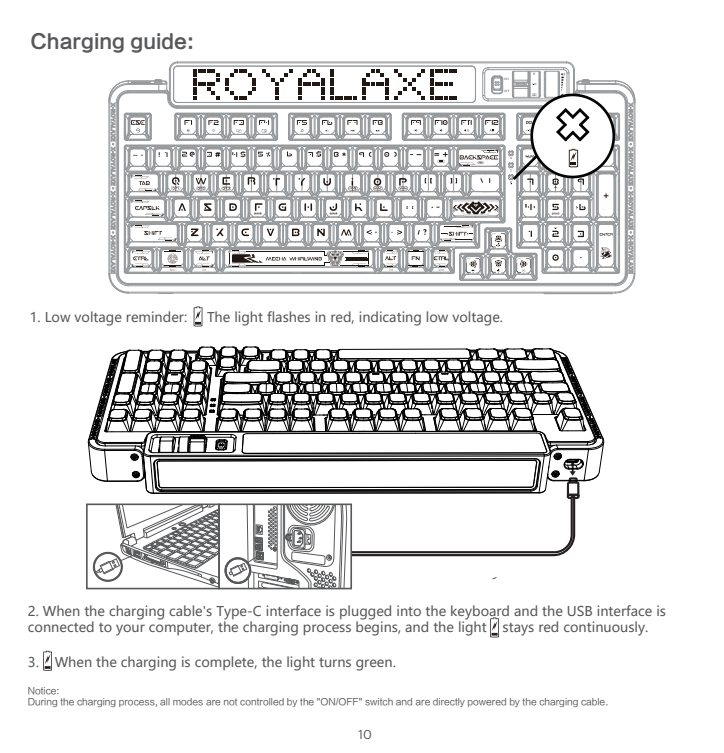
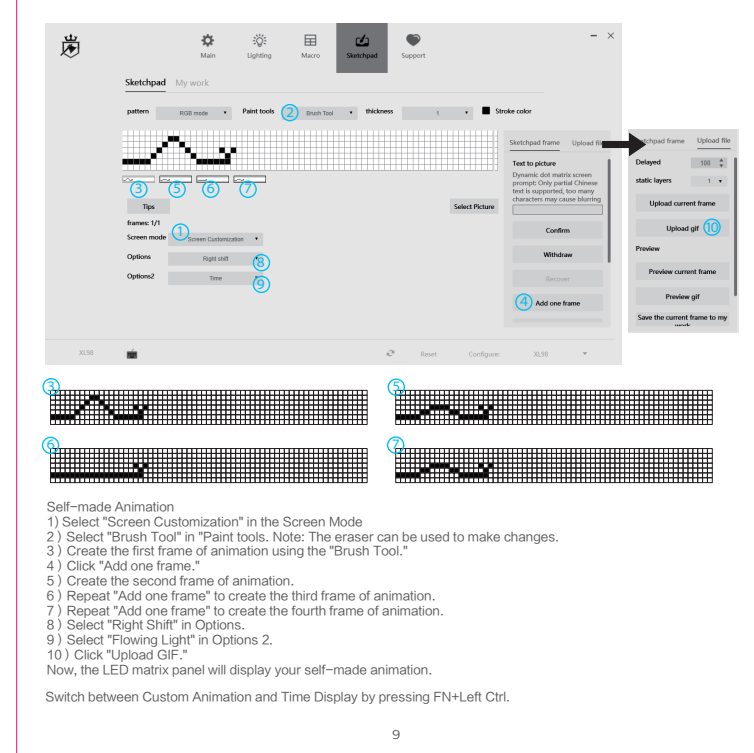
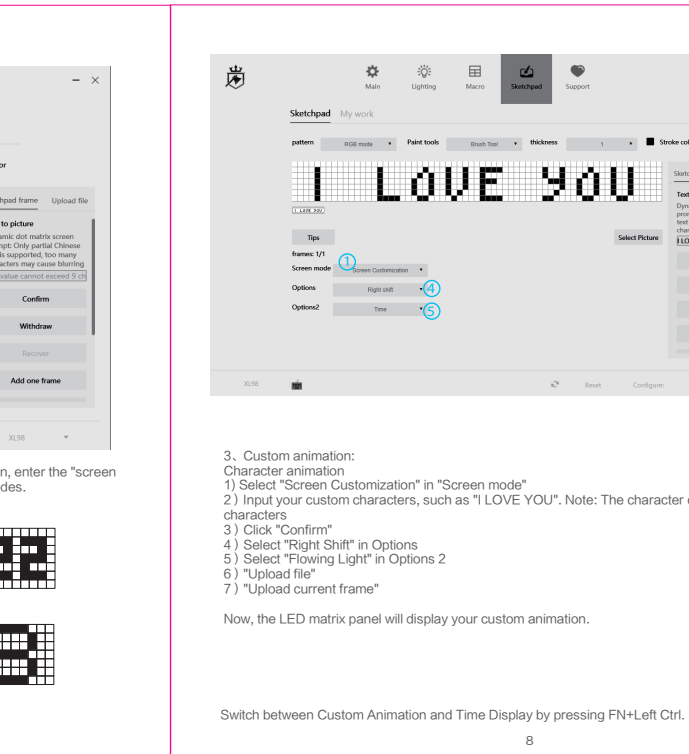
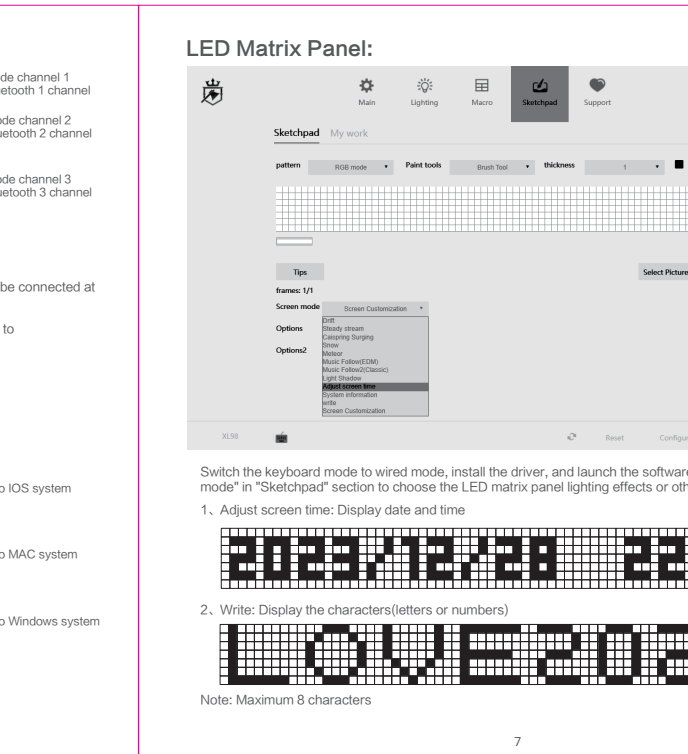
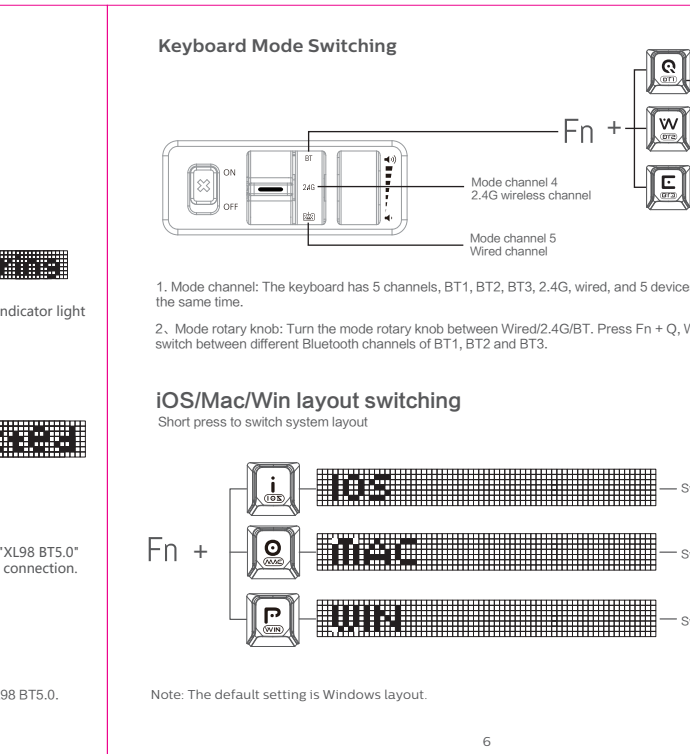
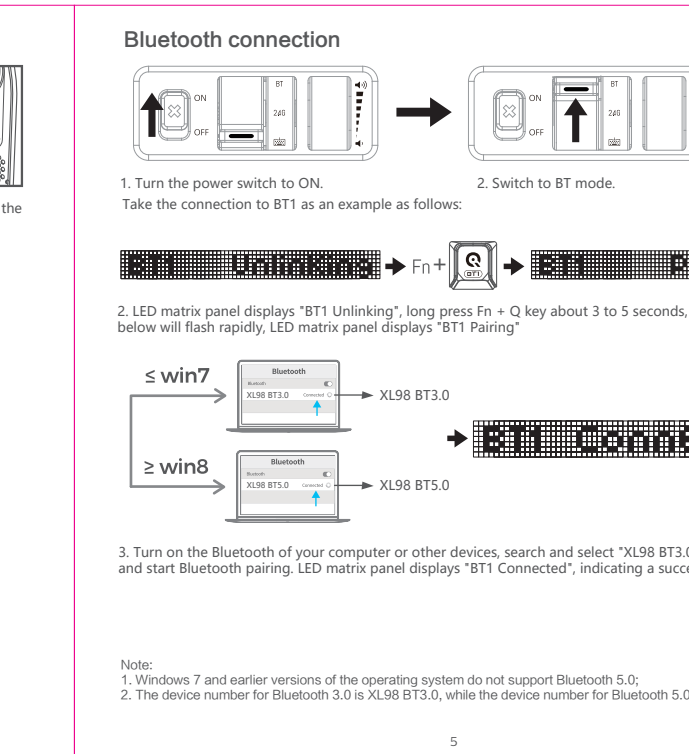
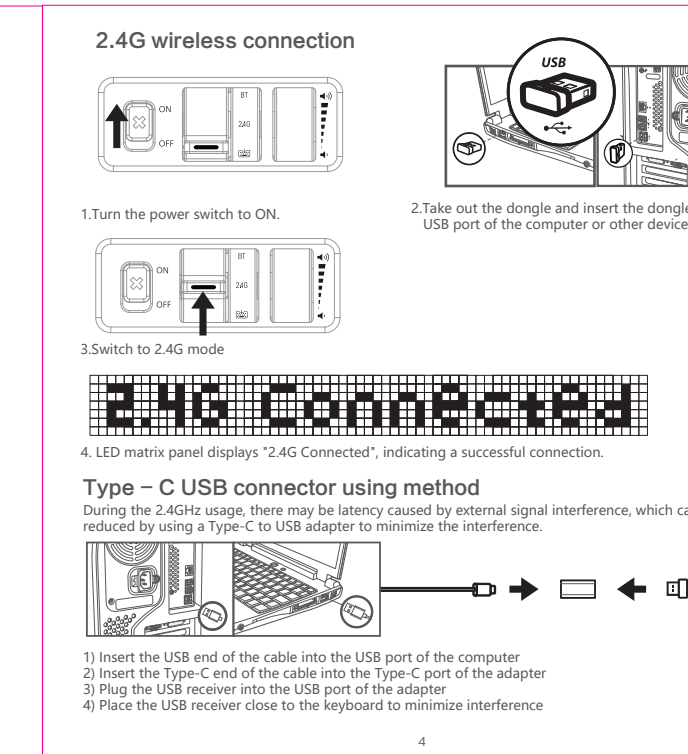
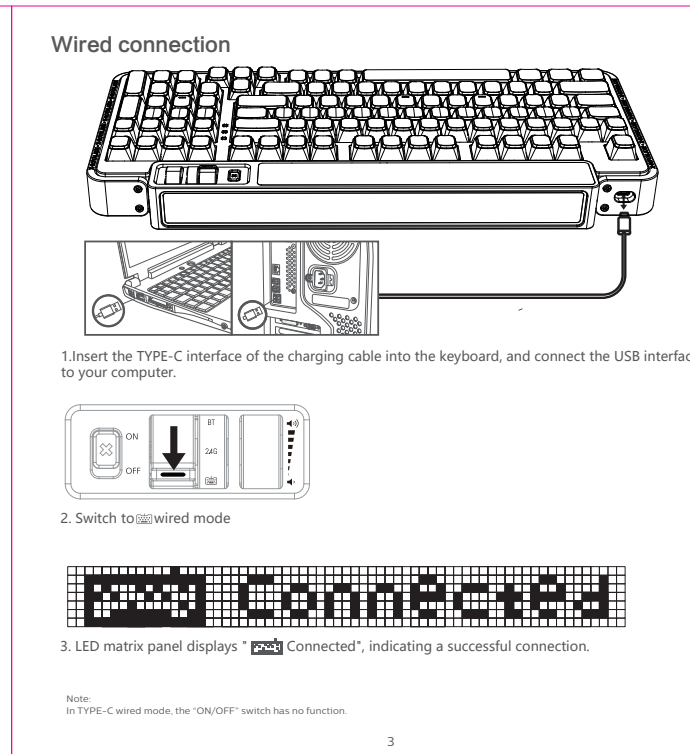


- ### Function overview of the keyboard
- Fn + : Reset
  - Fn + : Screen brightness +
  - Fn + : Screen brightness -
  - Fn + : Multi screen display
  - Fn + : Back to the desktop
  - Fn + : Media Player
  - Fn + : Play/Pause
  - Fn + : Prev song
  - Fn + : Next song
  - Fn + : Mute
  - Fn + : Volume +
  - Fn + : Volume -
  - Fn + : Input method switching
  - Fn + : RGB light switch
  - Fn + : Switch the LED matrix panel lighting effect
  - Fn + : LED matrix panel On/Off switch
  - RGB LED matrix panel
  - Fn + : Battery indicator
  - Fn + : Monochromatic light switching
  - ON/OFF power switch
  - A : Caps lock indicator
  - Num lock indicator
  - Low battery indicator
  - Wired mode
  - 2.4G wireless mode
  - BT Bluetooth mode
  - Volume wheel



### Custom driver

For custom mode please go to the following URL to download official driver.  
<https://www.protoarc.com>

Note: The driver can only be used in wired and 2.4G mode.

### Technical specifications

- Connection methods: Wired / 2.4GHz / Bluetooth 3.0 / Bluetooth 5.0
- Wireless range: 2.4GHz(90-15 meters), Bluetooth(330-10 meters)
- Current and voltage: 5V = 500mA(max)
- Keyboard keys: 98
- Keyboard material: PBT
- Mechanical switch lifespan: 100 million times
- Lithium battery capacity: 800mAh
- Keyboard size: 15.6" x 6.8" x 1.4"
- Weight: 3.96lbs

### System requirement

- 1 x USB port
- Bluetooth 3.0/Bluetooth 5.0
- Windows: 7/Windows 8/Windows 10 or later.
- Android: 3.2 and above; Mac: OS 10.5 or later

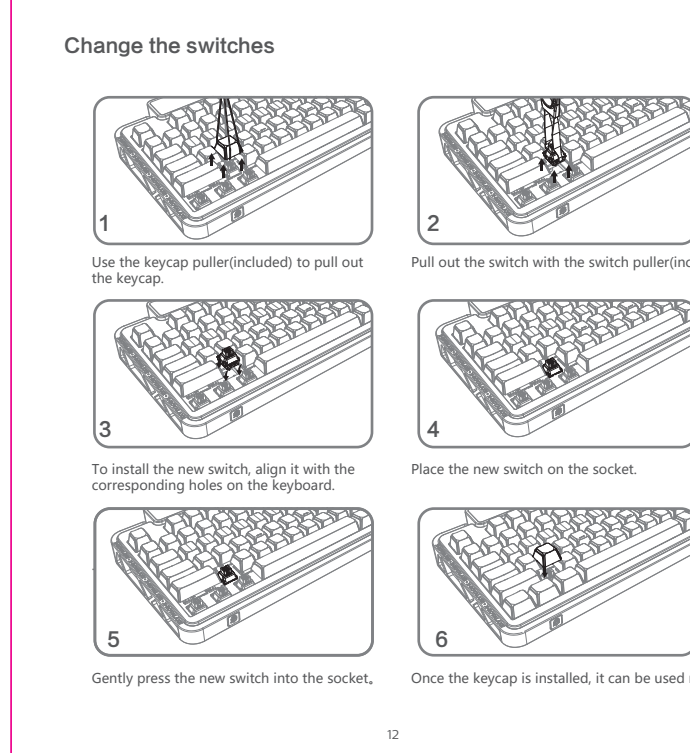
Note: Multimedia functions are partially invalid in different OS versions.

### Trouble shooting

- Ensure that the product's USB wireless receiver is properly inserted into the computer's USB port.
- Ensure that your computer meets the minimum system requirements.
- If the product and the wireless receiver are beyond the effective connection distance, please reduce the distance between the product and the receiver.

### Attention

- For cleaning, please use dry, soft cotton fabric, etc.
- Do not fold or bend the product.
- Do not forcefully disassemble the product.
- Avoid getting the product wet, exposed to direct sunlight, or near open flames.
- Do not directly rinse with water.
- The keyboard is designed to be charged with a rated voltage of 5V based on the USB protocol. Please use the computer's USB interface for charging and avoid using a charger to charge the keyboard.
- During use, prevent liquids from entering the internal components, as this may cause short circuits and electrical malfunctions.



### Important safety and compliance information

Disposal of product and packing material

Waste Electrical and Electronic Equipment (WEEE)

This symbol on the product or on its packaging indicates that this product must not be disposed of with your household waste. Instead, it is your responsibility to dispose of your waste responsibly by handing it over to a designated collection point for the recycling of waste electrical and electronic equipment. The separate collection and recycling of your waste contribute to the protection of the environment. For more information about where you can drop off your waste equipment for recycling, please contact the local city office, the household waste disposal service or the shop where you purchased the product.

CE Declaration of Conformity

This device complies with the requirements set out in the Council Directive on the Approximation of the Laws of the Member States relating to Electromagnetic Compatibility Directive (2004/108/EC), Radio directive (2014/53/EU) and Radio Equipment Directive (2014/53/EU) for Radio Equipment.

This product has been tested and found to comply with the harmonized standards for Information Technology Equipment, these harmonized standards published under Directive of Official Journal of the European Union.

Federal Communications Commission (FCC) Notice

This equipment has been tested and found to comply with the limits for a Class B digital device, pursuant to Part 15 of the FCC Rules. These limits are designed to provide reasonable protection against harmful interference in a residential installation. This equipment generates, uses and can radiate radio frequency energy and, if not installed and used in accordance with the instructions, may cause harmful interference to radio communications.

However, there is no guarantee that interference will not occur in a particular installation. If this equipment does cause harmful interference to radio or television reception, which can be determined by turning the equipment off and on, the user is encouraged to try to correct the interference by one or more of the following measures:

- Reorient or relocate the receiving antenna.
- Increase the separation between the equipment and receiver.
- Connect the equipment into a circuit different from that to which the receiver is connected.
- Consult the dealer or an experienced radio/TV technician for help.

Changes or modifications not expressly approved by the party responsible for compliance could void the user's authority to operate the equipment.

THIS CLASS B DIGITAL APPARATUS MEETS ALL REQUIREMENTS OF THE CANADIAN INTERFERENCE - CAUSING EQUIPMENT REGULATIONS.

FCC Compliance Statement

This device complies with Part 15 of the FCC Rules. Operation is subject to the following two conditions: (1) this device may not cause harmful interference, and (2) this device must accept any interference received, including interference that may cause undesired operation.

Commissio Federale de Communication

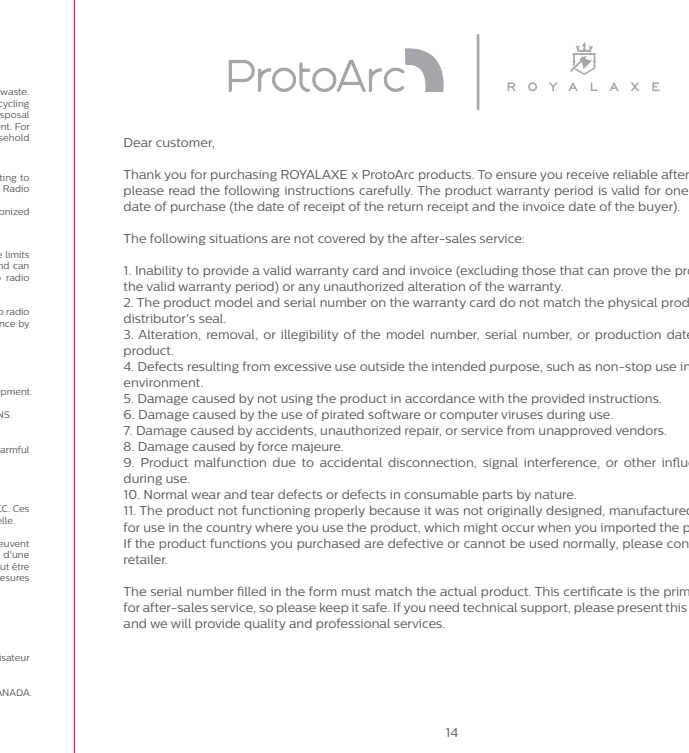
Cet équipement a été testé et déclaré conforme aux limites des appareils numériques de classe B, aux termes de l'article 15 Des règles de la FCC. Ces limites sont conçues de façon à fournir une protection raisonnable contre les interférences radioélectriques dans le cadre d'une installation résidentielle.

CET appareil produit, utilise et peut émettre des hyperfréquences qui, si l'appareil n'est pas installé ou utilisé selon les consignes données, peuvent causer des interférences nuisibles aux communications radio. Cependant, rien ne peut garantir l'absence d'interférence dans le cadre d'une installation particulière. Si cet appareil est la cause d'interférences radioélectriques pour la réception des signaux de radio ou de télévision, on doit essayer les mesures suivantes:

- Reorienter ou déplacer l'antenne de réception.
- Augmenter la distance entre l'équipement et le récepteur.
- Brancher l'équipement sur un circuit différent de celui auquel le récepteur est branché.
- Demander à l'électronicien ou au technicien chevronné en radio/ télévision.

Toutes modifications rigoureuses qui ne respectent pas les exigences des services compétents en matière de conformité et susceptible d'entraîner à l'utilisateur l'absence de respect des règlements.

CEI APPAREIL NUMÉRIQUE DE LA CLASSE B RESPECTE TOUTES LES EXIGENCES DU RÈGLEMENT SUR LE MATÉRIEL BRUIILLANT OU CANADA.



Commodity information	Name	
	Place of origin	
	Model No.	
User info.	Name	
	Address	
	Tel.	
Sales info.	Postcode	
	Sale date	
	Invoice No.	
Dear customer, the above information is to be filled in by the seller. Please cooperate with us. Thank you!	Stamp & Signature	
	The following information shall be filed in by the maintenance agency and returned to the customer.	
	Maintenance company name	
Maintenance info.	Address	
	Tel.	
	Postcode	
	Model No.	
	Date	
Signature		

