

R68

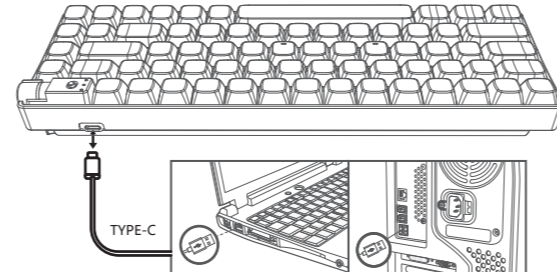
BT 3.0/BT 5.0/2.4G/Wired Three Mode Mechanical Gaming Keyboard

USER MANUAL

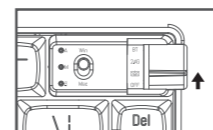
Function Overview

- +↵ : Enter or press Shift at the same time to enter-
+↵ : Reset
- +F1 : F1 function key
+☀ : Screen brightness -
- +F2 : F2 function key
+☀ : Screen brightness +
- +F3 : F3 function key
+⌨ : Multi screen display
- +F4 : F4 function key
+⏪ : Back to the desktop
- +F5 : F5 function key
+▶ : Media Player
- +F6 : F6 function key
+⏮ : Play/Pause
- +F7 : F7 function key
+⏮ : Prev song
- +F8 : F8 function key
+⏭ : Next song
- +F9 : F9 function key
+⏮ : Mute
- +F10 : F10 function key
+⏮ : Volume -
- +F11 : F11 function key
+⏮ : Volume +
- +F12 : F12 function key
+⌨ : Input method switching
- +☀ : Monochromatic light switching
- ⏻ : Caps lock indicator
M : Mode switch
⚡ : Low battery indicator
Win/Mac System switch
- OFF switch
Wired mode
2.4G wireless mode
BT Bluetooth mode
- +⌨ : Bluetooth mode 1
- +⌨ : Bluetooth mode 2
- +⌨ : Bluetooth mode 3
- +⌨ : Switch the RGB light mode
- +⌨ : Decrease the RGB light frequency
- +⌨ : Increase the RGB light frequency
- +⌨ : Increase the RGB light brightness
- +⌨ : Decrease the RGB light brightness
- +⌨ : RGB Light switch
- +⌨ : Insert
- +⌨ : Fn key (orange)
- +⌨ : PgUp :PgUp
- +⌨ : Sck :SckLk
- +⌨ : End :End
- +⌨ : Fn key (blue)
- +⌨ : Home :Home
- +⌨ : PgDn :PgDn
- 2.4G receiver
- Type-C charging/wired interface

Wired Connection



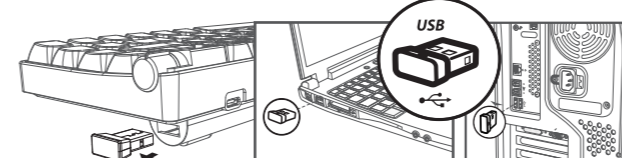
- Insert the TYPE-C interface of the charging cable into the keyboard, and connect the USB interface to your computer.



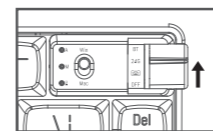
- Switch to Wired mode, 1 indicator will flash once and then go out, indicating a successful connection.

Note:
In TYPE-C wired mode, the "OFF" switch has no function.

2.4G Connection



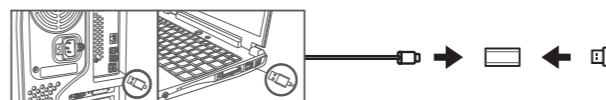
- Take out the receiver and insert the receiver into the USB port of the computer.



- Switch to 2.4G mode, the 1 indicator will flash twice and then go off, indicating a successful connection.

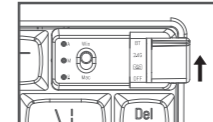
Type - C USB connector using method

During the 2.4GHz usage, there may be latency caused by external signal interference, which can be reduced by using a Type-C to USB adapter to minimize the interference.



- Insert the USB end of the cable into the USB port of the computer
- Insert the Type-C end of the cable into the Type-C port of the adapter
- Plug the USB receiver into the USB port of the adapter
- Place the USB receiver close to the keyboard to minimize interference

Bluetooth Connection

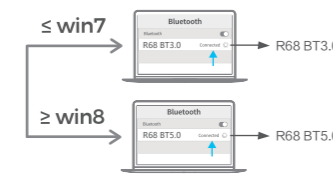


- Switch to BT mode, the 1 indicator will flash three times and then go out.



Take the connection to BT1 as an example as follows:

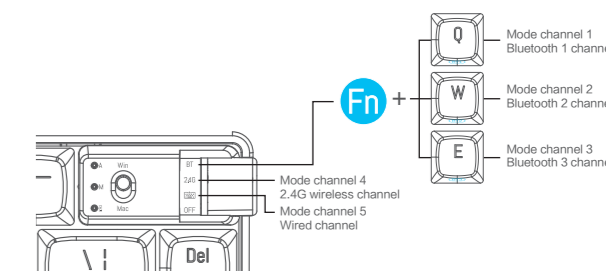
- Long press the Fn + Q key about 3 to 5 seconds, the corresponding indicator light will flash quickly, and then enter the Bluetooth pairing mode.



- Turn on the Bluetooth of your computer or other device, search and select "R100 BT3.0" or "R100 BT5.0" and start Bluetooth pairing until the connection is completed.

Note:
1. Windows 7 and below system versions do not support Bluetooth 5.0;
2. The device number corresponding to Bluetooths 3.0 is R68 BT3.0, and the device number corresponding to Bluetooth 5.0 is R68 BT5.0

Mode Switching



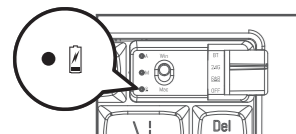
- Mode channel: The keyboard has 5 channels, BT1, BT2, BT3, 2.4G, wired, and 5 devices can be connected at the same time.
- Mode rotary knob: Turn the mode rotary knob between OFF/Wired/2.4G/BT. Press Fn (blue) + Q, W or E to switch between different Bluetooth channels of BT1, BT2 and BT3.

iOS/Mac/Win layout switching

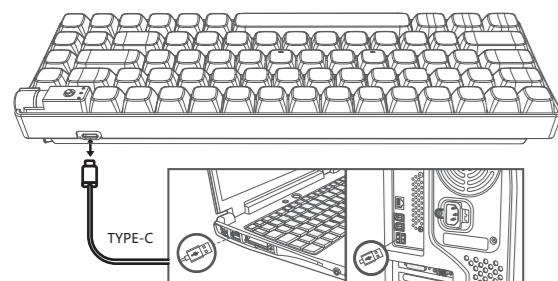


Note: the default setting is Windows layout.

Charging Guide



- Low voltage reminder: The light flashes in red, indicating low voltage.



- When the charging cable's Type-C interface is plugged into the keyboard and the USB interface is connected to your computer, the charging process begins, and the light stays red continuously.

- When the charging is complete, the light turns green.

Notice:
During the charging process, all modes are not controlled by the "ON/OFF" switch and are directly powered by the charging cable.

Custom Driver

For custom mode please go to the following URL to download official driver:
<https://www.protoarc.com>
Find "Support" from the Header Menu > "Driver Downloads"
Note: The driver can only be used in wired and 2.4G mode.

Technical Specifications

- Connection method: wired / 2.4GHz / Bluetooth 3.0 / Bluetooth 5.0
- Wireless range: 2.4GHz(49ft/15 meters), Bluetooth(33ft/10 meters)
- Working current and voltage: 5V, 500mA(max)
- Keyboard keys: 67
- Keycap material: PBT
- Mechanical switch lifespan: 100 million times
- Lithium battery capacity: 2100mAh
- Keyboard product size: 12.2" x 4" x 1.6"
- Weight: 1.56 lbs

System Requirement

- 1 x USB port
- Bluetooth 3.0/Bluetooth 5.0
- Windows: 7, Windows 8, Windows 10 or later, Android 3.2 and above; Mac OS 10.5 or later

Note: Multimedia functions are partially invalid in different OS versions.

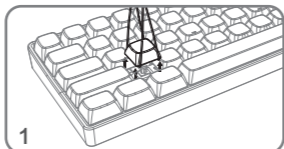
Troubleshooting

- Ensure that the product's USB wireless receiver is properly inserted into the computer's USB port.
- Ensure that your computer meets the minimum system requirements.
- If the product and the wireless receiver are beyond the effective connection distance, please reduce the distance between the product and the receiver.

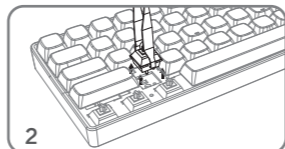
Attention

- For cleaning, please use dry, soft cotton fabric, etc.
- Do not fold or bend the product.
- Do not forcefully disassemble the product.
- Avoid getting the product wet, exposed to direct sunlight, or near open flames.
- Do not directly rinse with water.
- The keyboard is designed to be charged with a rated voltage of 5V based on the USB protocol. Please use the computer's USB interface for charging and avoid using a charger to charge the keyboard.
- During use, prevent liquids from entering the internal components, as this may cause short circuits and electrical malfunctions.

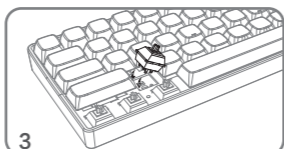
Switch Replacement



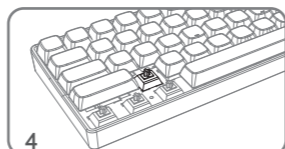
- Use the keycap puller (included) to pull out the keycap.



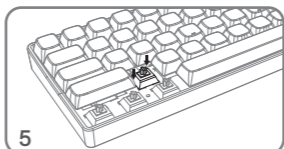
- Pull out the switch with the switch puller (included).



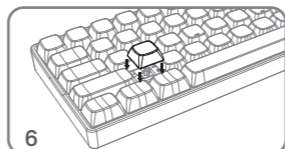
- To install the new switch, align it with the corresponding holes on the keyboard.



- Place the new switch on the socket.



- Gently press the new switch into the socket.



- Once the keycap is installed, it can be used normally.

Important Safety and Compliance Information

Disposal of product and packing material
Waste Electrical and Electronic Equipment- WEEE
This symbol on the product or on its packaging indicates that this product must not be disposed of with your household waste. Instead, it is your responsibility to dispose of your waste equipment by handing it over to a designated collection point for the recycling of waste electrical and electronic equipment. The separate collection and recycling of your waste equipment at the time of disposal will help to conserve natural resource and ensure that it is recycled in a manner that protects human health and the environment. For more information about where you can drop off your waste equipment for recycling, please contact the local city office, the household waste disposal service or the shop where you purchased the product.

CE Declaration of Conformity
This device complies with the requirements set out in the Council Directive on the Approximation of the Laws of the Member States relating to Electromagnetic Compatibility Directive (2014/30/EU), RoHS directive (2011/65/EU) and Radio Equipment Directive (2014/53/EU), for Radio Equipment.
This product has been tested and found to comply with the harmonized standards for Information Technology Equipment, these harmonized standards published under Directives of Official Journal of the European Union.

Federal Communications Commission (FCC) Notice
This equipment has been tested and found to comply with the limits for a Class B digital device, pursuant to Part 15 of the FCC Rules. These limits are designed to provide reasonable protection against harmful interference in a residential installation. This equipment generates, uses and can radiate radio frequency energy and, if not installed and used in accordance with the instructions, may cause harmful interference to radio communications.
However, there is no guarantee that interference will not occur in a particular installation. If this equipment does cause harmful interference to radio or television reception, which can be determined by turning the equipment off and on, the user is encouraged to try to correct the interference by one or more of the following measures:
- Reorient or relocate the receiving antenna.
- Increase the separation between the equipment and receiver.
- Connect the equipment into an outlet on a circuit different from that to which the receiver is connected.
- Consult the dealer or an experienced radio/TV technician for help.
Changes or modifications not expressly approved by the party responsible for compliance could void the user's authority to operate the equipment.

THIS CLASS B DIGITAL APPARATUS MEETS ALL REQUIREMENTS OF THE CANADIAN INTERFERENCE - CAUSING EQUIPMENT REGULATIONS.

FCC Compliance Statement
This device complies with Part 15 of the FCC Rules. Operation is subject to the following two conditions: (1) this device may not cause harmful interference, and (2) this device must accept any interference received, including interference that may cause undesired operation.
Commission Federale de la Communication
Cet équipement a été testé et il est conforme aux limites des appareils numériques de classe B aux termes de l'article 15 Des r 6 de la FCC. Ces limites sont conçues de façon à fournir une protection raisonnable contre les interférences nuisables dans le cadre d'une installation résidentielle.

CET appareil produit, utilisé et peut émettre des hyperfréquences qui, si l'appareil n'est pas installé et utilisé selon les consignes données, peuvent causer des interférences nuisables aux communications radio. Cependant, rien ne peut garantir l'absence d'interférences nuisables dans le cadre d'une installation particulière. Si cet appareil est la cause d'interférences nuisables pour la réception de signaux de radio ou de télévision, ce qui peut être évité, en fermant l'équipement, puis en le remettant en fonction, l'utilisateur pourrait essayer de corriger la situation en prenant les mesures suivantes:
- Réorienter ou réinstaller l'antenne de réception.
- Augmenter la distance entre l'équipement et le récepteur.
- Brancher l'équipement sur un autre circuit que celui utilisé par le récepteur.
- Consulter le détaillant ou un technicien chevronné en radio/télévision.

Toutes modifications n'ayant pas reçu l'approbation des services compétents en matière de conformité est susceptible d'entraîner l'utilisateur l'usage du présent équipement.

CET APPAREIL NUMÉRIQUE DE LA CLASSE B RESPECTE TOUTES LES EXIGENCES DU RÈGLEMENT SUR LE MATÉRIEL BROUILLÉUR DU CANADA.

Dear customer,

Thank you for purchasing ROYALAXE x ProtoArc products. To ensure you receive reliable after-sales service, please read the following instructions carefully. The product warranty period is valid for one year from the date of purchase (the date of receipt of the return receipt and the invoice date of the buyer).

The following situations are not covered by the after-sales service:

- Inability to provide a valid warranty card and invoice (excluding those that can prove the product is within the valid warranty period) or any unauthorized alteration of the warranty.
- The product model and serial number on the warranty card do not match the physical product or lack the distributor's seal.
- Alteration, removal, or illegibility of the model number, serial number, or production date code on the product.
- Defects resulting from excessive use outside the intended purpose, such as non-stop use in a commercial environment.
- Damage caused by not using the product in accordance with the provided instructions.
- Damage caused by the use of pirated software or computer viruses during use.
- Damage caused by accidents, unauthorized repair, or service from unapproved vendors.
- Damage caused by force majeure.
- Product malfunction due to accidental disconnection, signal interference, or other influencing factors during use.
- Normal wear and tear defects or defects in consumable parts by nature.
- The product not functioning properly because it was not originally designed, manufactured, or approved for use in the country where you use the product, which might occur when you imported the product. If the product functions you purchased are defective or cannot be used normally, please contact your local retailer.

The serial number filled in the form must match the actual product. This certificate is the primary document for after-sales service, so please keep it safe. If you need technical support, please present this warranty card, and we will provide quality and professional services.

Commodity Information	Name	
	Place of origin	
	Model No.	
User info.	Serial No.	
	Name	
	Address	
Sales info.	Tel.	
	Postcode	
	Retailer	
	Address	
	Tel.	
Maintenance info.	Postcode	
	Sale date	
	Invoice No.	
	Stamp & Signature	
	Signature	

Dear customer, the above information is to be filled in by the seller. Please cooperate with us. Thank you!
The following information shall be filled by the maintenance agency and returned to the customer.

Customer Support :
Email: support@protoarc.com

Co-created by ProtoArc x RoyalAxe
Manufacturer: Dongguan Lingjie Electronics & Technology Co., Ltd
Address: No. 23 Zhenxing North Road, Xiegang Town, Dongguan, Guangdong, China
Web: <https://www.protoarc.com>

