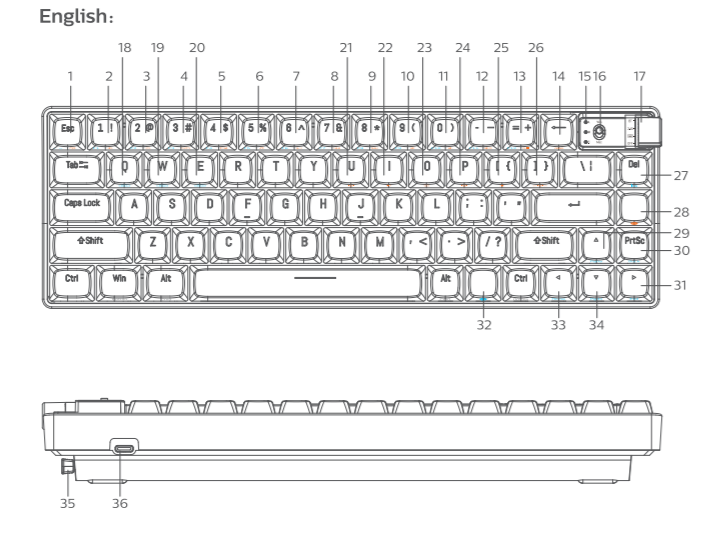


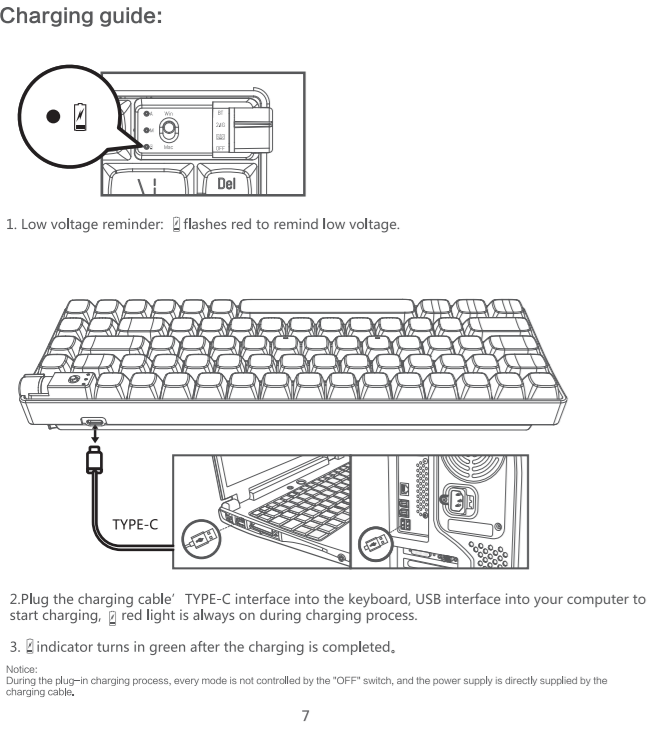
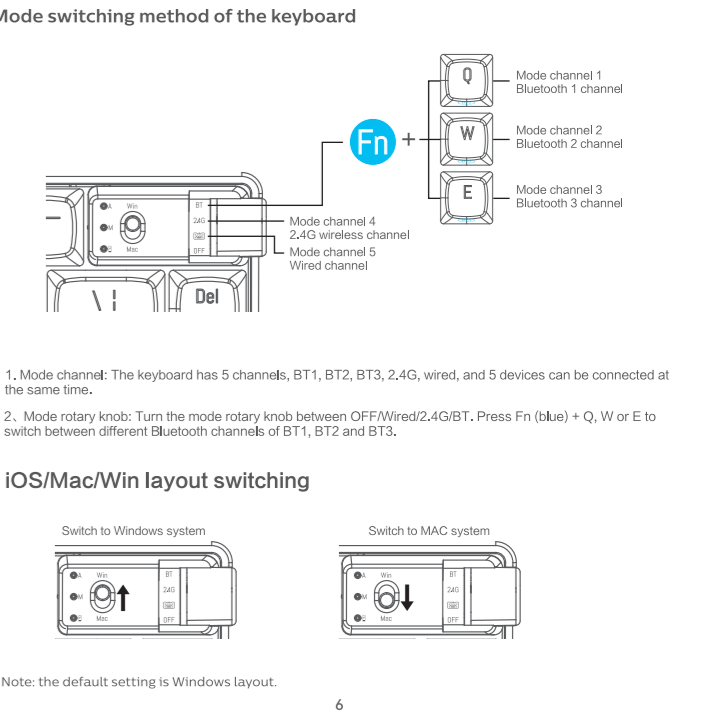
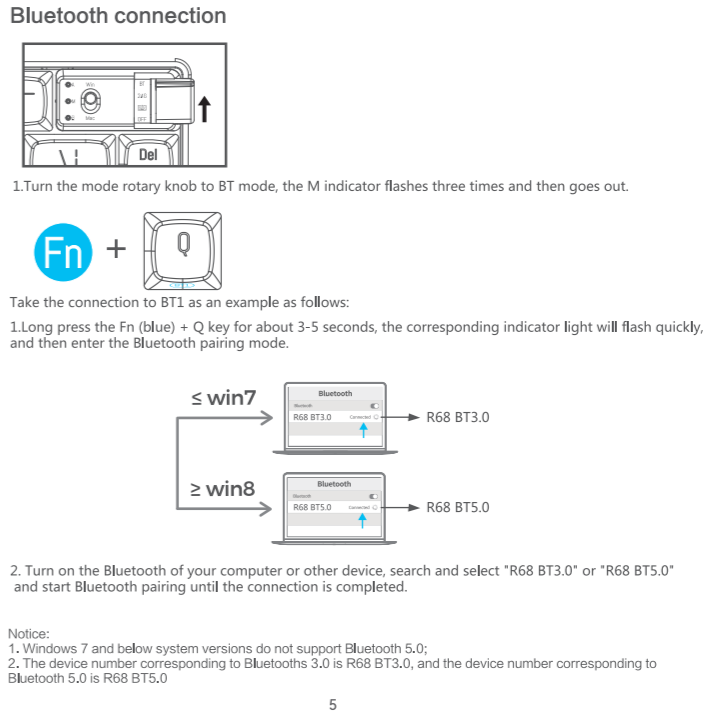
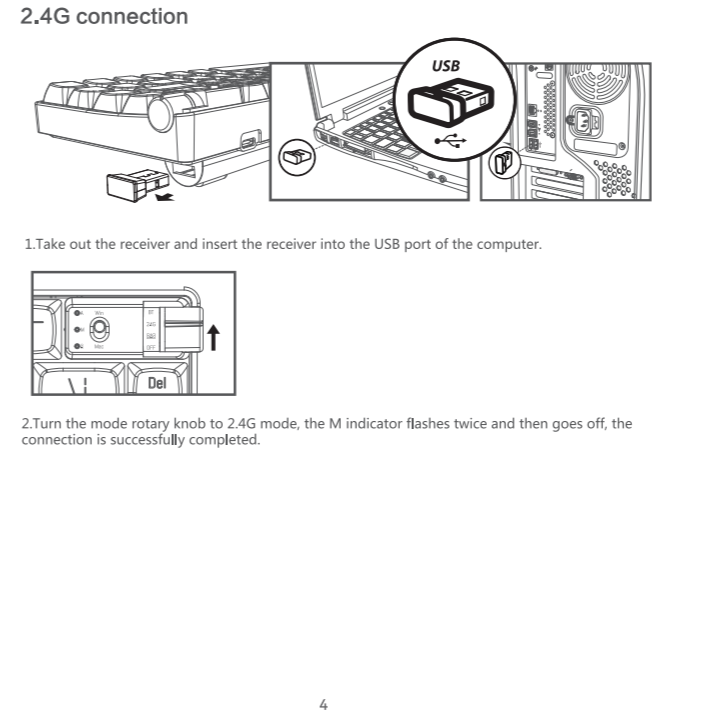
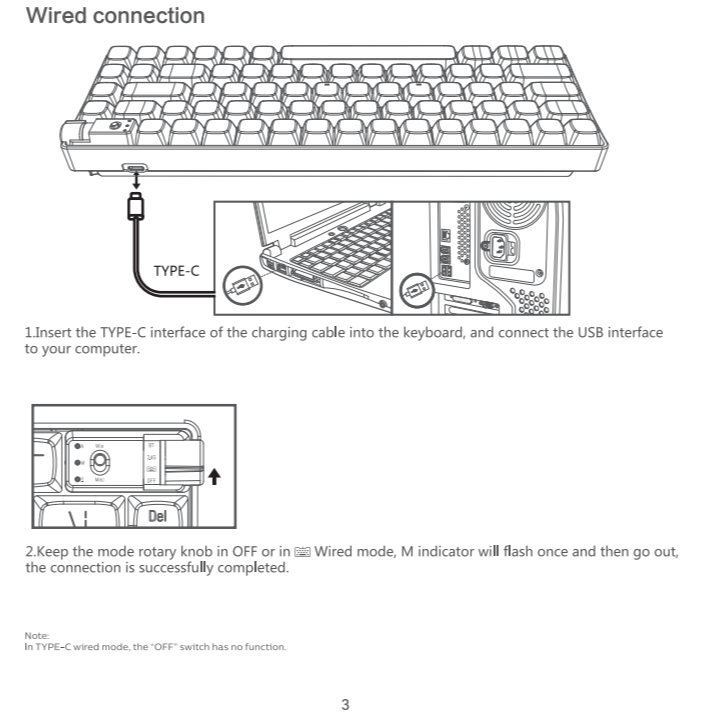
正面



**R68**  
 BT 3.0/BT 5.0/2.4G/Wired Three Mode Mechanical Gaming Keyboard  
 Co-created by ProtoArc x RoyalAxe  
**USER MANUAL**



- Function overview of the keyboard**
1. **Enter** or press Shift at the same time to enter-  
 2. **Reset**
  3. **F1** function key  
 4. **F2** function key  
 5. **F3** function key  
 6. **F4** function key  
 7. **F5** function key  
 8. **F6** function key  
 9. **F7** function key  
 10. **F8** function key  
 11. **F9** function key  
 12. **F10** function key  
 13. **F11** function key  
 14. **F12** function key
  14. **Monochromatic light switching**
  15. **A Caps lock indicator**
  16. **Win/Mac System switch**
  17. **OFF switch**
  18. **Bluetooth mode 1**
  19. **Bluetooth mode 2**
  20. **Bluetooth mode 3**
  21. **Switch the backlight mode**
  22. **Backlight frequency slows down**
  23. **Increased backlight frequency**
  24. **Backlight brightness increase**
  25. **Backlight frequency slows down**
  26. **Light switch**
  27. **Insert**
  28. **Fn key (orange)**
  29. **PgUp**
  30. **SCLK**
  31. **End**
  32. **Fn key (blue)**
  33. **Home/Home**
  34. **PgDn**
  35. **2.4G receiver**
  36. **Type-C charging/wired interface**



**Custom drive**

For custom mode, please scan the code to download the official driver:  
<https://www.protoarc.com>  
 Find "Support" from Header Menu > "Download"  
 Reminder: The driver only supports customization in wired and 2.4G mode.

**Technical specifications**

- Connection method: wired / 2.4GHz / Bluetooth 3.0 / Bluetooth 5.0
- Wireless effective distance: 2.4GHz about 15 meters / Bluetooth about 10 meters
- Working current and voltage: 5V = 500mA(max)
- Keyboard keys: 67
- Keycap material: PBT
- Mechanical switch lifespan: 100 million times
- Lithium battery: 2100mAh
- Keyboard product size: 311.5x101.5x40.3mm
- Weight: 710g ± 20g

**System requirement**

1. x USB port
2. Bluetooth 3.0/Bluetooth 5.0
3. Windows® 7, Windows® 8, Windows® 10 or later, Android 3.2 and above, Mac OS 10.5 or later

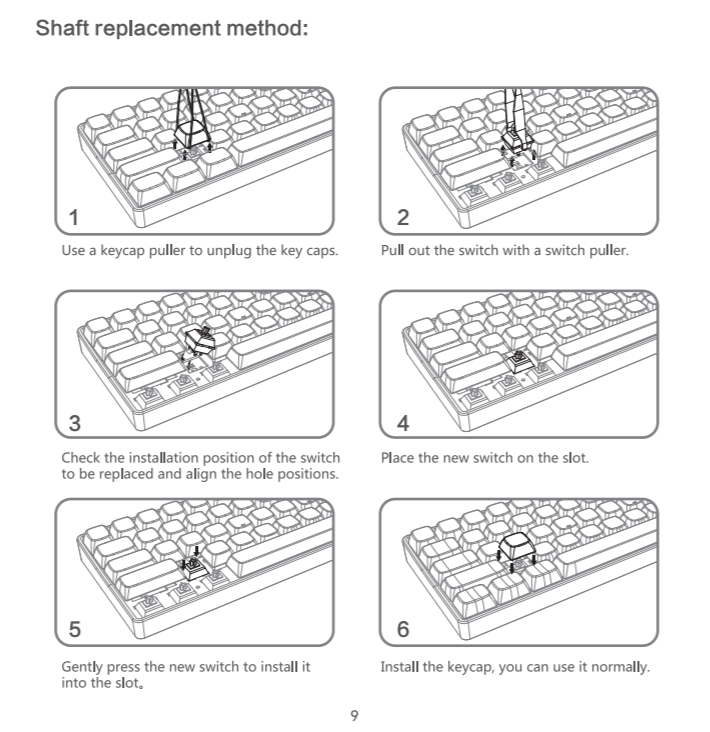
Note: Multimedia functions are partially invalid in different OS versions.

**Trouble shooting**

1. Make sure that the USB wireless receiver of the product is correctly plugged into the USB port of the computer.
2. Make sure the computer meets the minimum system requirement.
3. If the distance between the product and the receiver exceeds an effective range, please reduce the distance for better performance.

**Attention**

1. Please use dry and soft cloth to clean the product.
2. Do not disassemble the product by force.
3. Do not get in the rain or in the sun or fire.
4. Do not flush directly with water.



**Important safety and compliance information**

Disposal of product and packing material  
 Waste Electrical and Electronic Equipment-WEEE  
 This symbol on the product or on its packaging indicates that this product must not be disposed of with your household waste. Instead, it is your responsibility to dispose of your waste equipment by handing it over to a designated collection point for the recycling or waste electrical and electronic equipment. The separate collection and recycling of your waste equipment at the time of disposal will help to conserve natural resources and ensure that it is recycled in a manner that protects human health and the environment. For more information about where you can drop off your waste equipment for recycling, please contact the local city office, the household waste disposal service or the shop where you purchased the product.

**CE Declaration of Conformity**  
 This device complies with the requirements set out in the Council Directive on the Approximation of the Laws of the Member States relating to Electromagnetic Compatibility Directive (2004/108/EC), RoHS directive (2002/95/EC) and Radio Equipment Directive (2014/53/EU for Radio Equipment). This product has been tested and found to comply with the harmonized standards for Information Technology Equipment, these harmonized standards published under Directives of Official Journal of the European Union.

**Federal Communications Commission (FCC) Notice**  
 This equipment has been tested and found to comply with the limits for a Class B digital device, pursuant to Part 15 of the FCC Rules. These limits are designed to provide reasonable protection against harmful interference in a residential installation. This equipment generates, uses and can radiate radio frequency energy and, if not installed and used in accordance with the instructions, may cause harmful interference to radio communications.

However, there is no guarantee that interference will not occur in a particular installation. If this equipment does cause harmful interference to radio or television reception, which can be determined by turning the equipment off and on, the user is encouraged to try to correct the interference by one or more of the following measures:  
 - Reorient or relocate the receiving antenna.  
 - Increase the separation between the equipment and receiver.  
 - Connect the equipment into an outlet on a circuit different from that to which the receiver is connected.  
 - Consult the dealer or an experienced radio/TV technician for help.  
 Changes or modifications not expressly approved by the party responsible for compliance could void the user's authority to operate the equipment.

**THIS CLASS B DIGITAL APPARATUS MEETS ALL REQUIREMENTS OF THE CANADIAN INTERFERENCE - CAUSING EQUIPMENT REGULATIONS.**

**FCC Compliance Statement**  
 This equipment complies with Part 15 of the FCC Rules. Operation is subject to the following two conditions: (1) this device may not cause harmful interference, and (2) this device must accept any interference received, including interference that may cause undesired operation.

**Commission Fédérale de la Communication**  
 Cet équipement a été testé et déclaré conforme aux limites des appareils numériques de classe B aux termes de l'article 15 Des règles de la FCC. Ces limites sont conçues de façon à fournir une protection raisonnable contre les interférences nuisibles dans le cadre d'une installation résidentielle.

CET appareil produit, utilise et peut émettre des hyperfréquences qui, si l'appareil n'est pas installé et utilisé selon les consignes données, peuvent causer des interférences nuisibles aux communications radio. Cependant, rien ne peut garantir l'absence d'interférences dans le cadre d'une installation particulière. Si cet appareil est la cause d'interférences nuisibles pour la réception des signaux de radio ou de télévision, ce qui peut être détecté en fermant l'équipement, puis en le remettant en fonction, l'utilisateur pourrait essayer de corriger la situation en prenant les mesures suivantes:  
 - Réorienter ou déplacer l'antenne de réception.  
 - Augmenter la distance entre l'équipement et le récepteur.  
 - Brancher l'équipement sur un autre circuit que celui utilisé par le récepteur.  
 - Demander l'aide du marchand ou d'un technicien cherché en radio/ télévision.

Toutes modifications n'ayant pas reçu l'approbation des services compétents en matière de conformité est susceptible d'être interdite à l'utilisateur l'usage du présent équipement.

CET APPAREIL NUMÉRIQUE DE LA CLASSE B RESPECTE TOUTES LES EXIGENCES DU RÈGLEMENT SUR LE MATÉRIEL BROUILLEUR DU CANADA.

**Dear customer,**  
 Thank you for purchasing a ROYALAXE accessory product. To ensure you a reliable after-sales service, please read the following instructions carefully. This product warranty period is valid for one year from the date of purchase (the date of receipt of the return receipt and the invoice date of the buyer).

The following situations are not covered by after-sales service:  
 1. Unable to provide a valid warranty card and invoice (not including those that can prove the products is within the valid warranty period) or the alteration of the warranty without authorization.  
 2. The product model and serial number on the warranty card are not in conformity with the physical product or without the distributor seal.  
 3. The model number, serial number or production date code on the product has been altered, removed or made illegible.  
 4. The defect is the result of excessive use outside the intended purpose, e.g. non-stop use in a commercial environment.  
 5. Damage due to not used in accordance with product instructions.  
 6. Damage caused by the use of pirated software or computer virus during use.  
 7. Damage caused by accident, damage, or repair from unauthorized service vendors.  
 8. Damage caused by force majeure.  
 9. The product does not work properly due to missing connection caused by accident, signal interference or other influential factors during use.  
 10. For normal wear and tear defects, or by their nature consumable parts.  
 11. The product does not function properly because it was not originally designed, manufactured or approved for use in the country where you use the product, which might occur when you imported the product.

If the functions of the product which you had purchased are defected or can not be used normally, please contact your local retailer.

The serial number of the product filled in the form must be consistent with the actual product. This certificate the primary instrument for the after-sales service, please safe keep it. If you need technical support, please show this warranty card, and we will provide quality and professional services.

Commodity Information	Name	
	Place of origin	
	Model No.	
User info.	Serial No.	
	Name	
	Address	
	Tel.	
Sales info.	Postcode	
	Retailer	
	Address	
	Tel.	
	Postcode	
Maintenance info.	Sale date	
	Invoice No.	
	Stamp & Signature	
	Signature	

Dear customer, the above information is to be filled in by the seller. Please cooperate with us. Thank you!  
 The following information shall be filled in by the maintenance agency and returned to the customer.

**Customer Support :**  
 Email: support@protoarc.com

Co-created by ProtoArc x RoyalAxe  
 Manufacturer: Dongguan Lingjie Electronics & Technology Co., Ltd  
 Address: No. 23 Zhenxing North Road, Xiegang Town, Dongguan, Guangdong, China  
 Web: https://www.protoarc.com

UKA, RoHS, REACH, CE, FCC, Made in China

背面