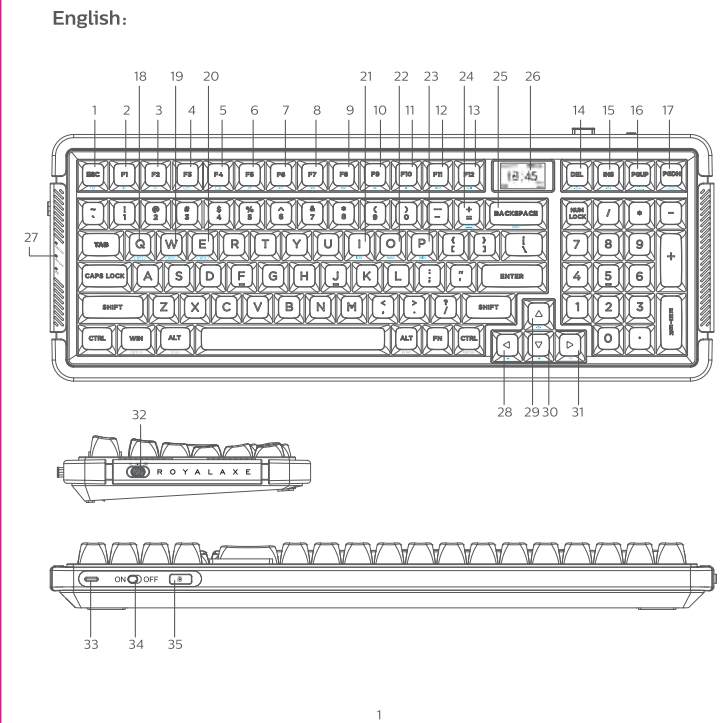
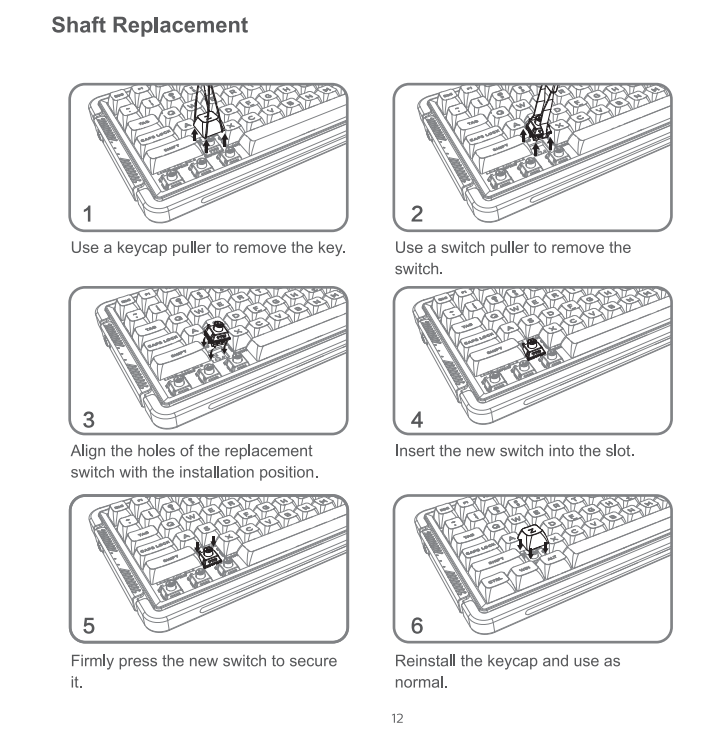
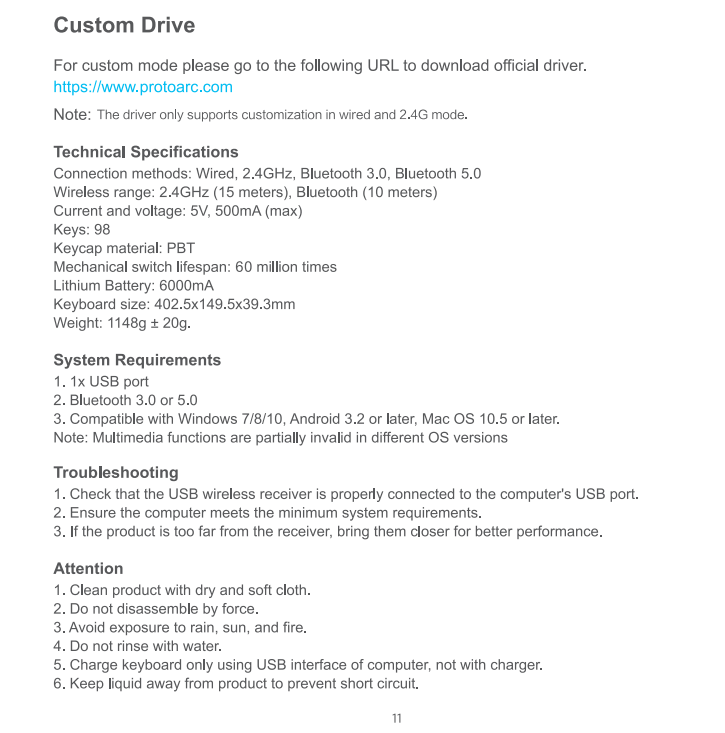
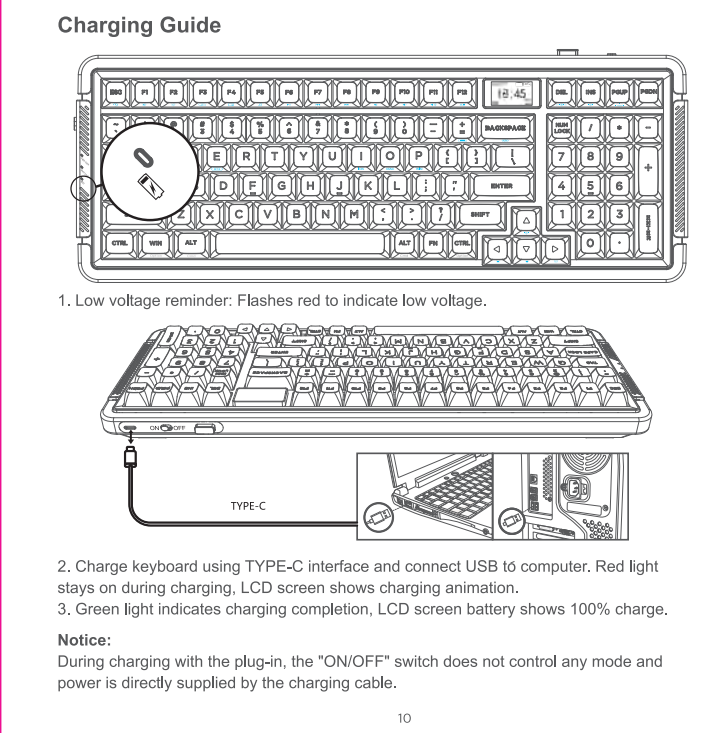
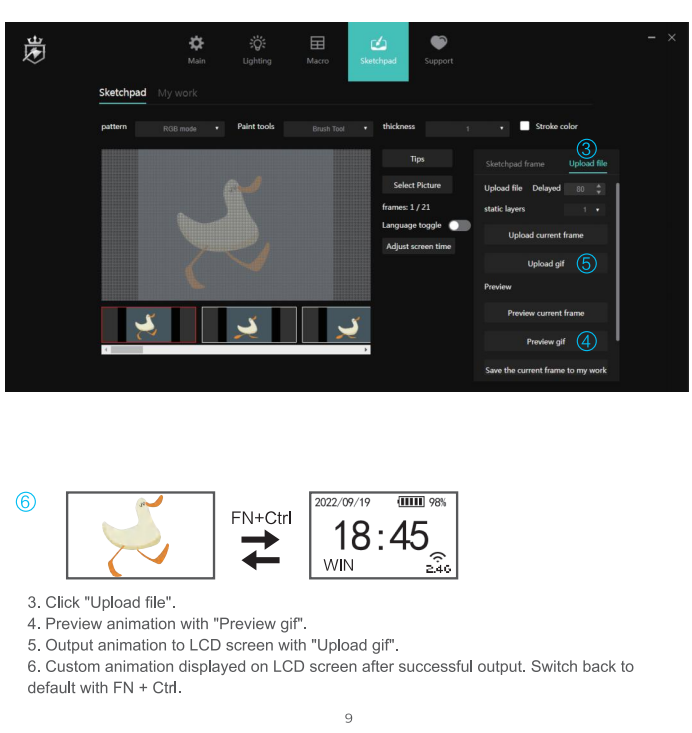
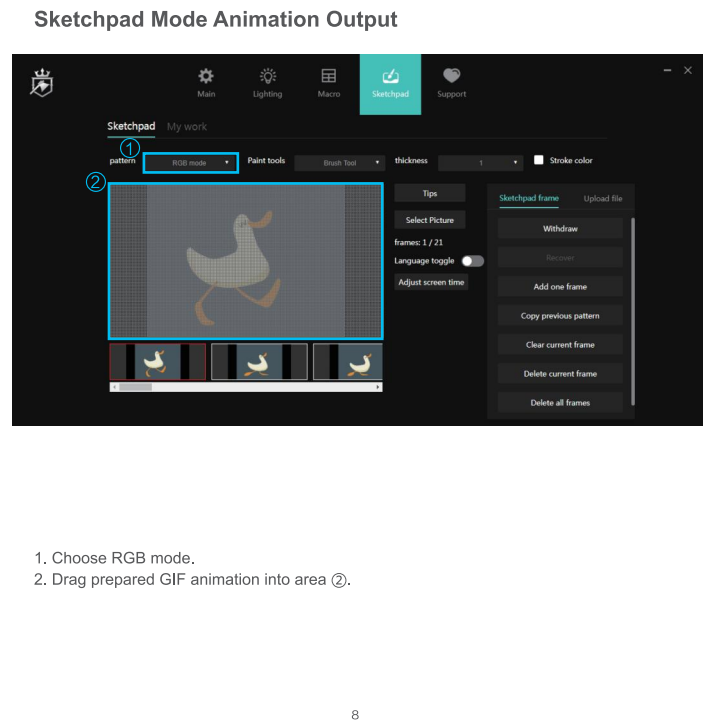
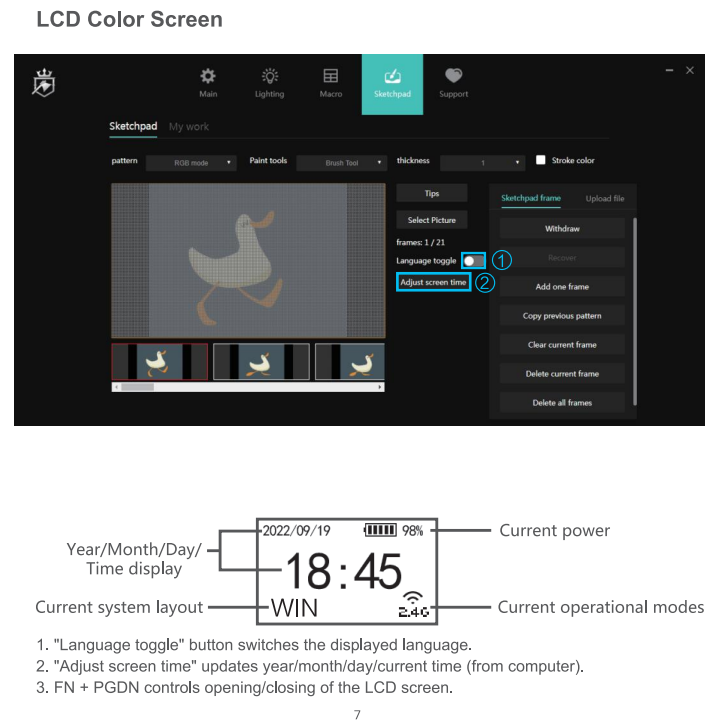
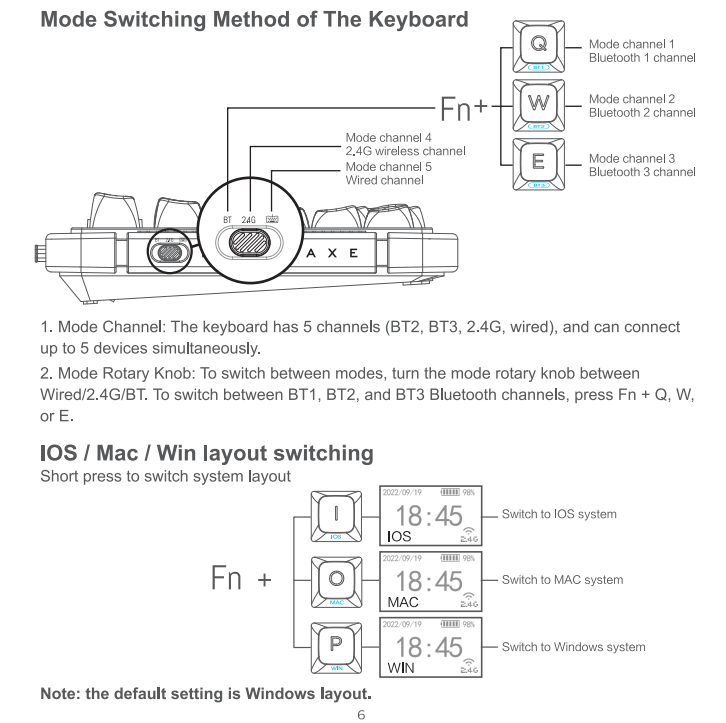
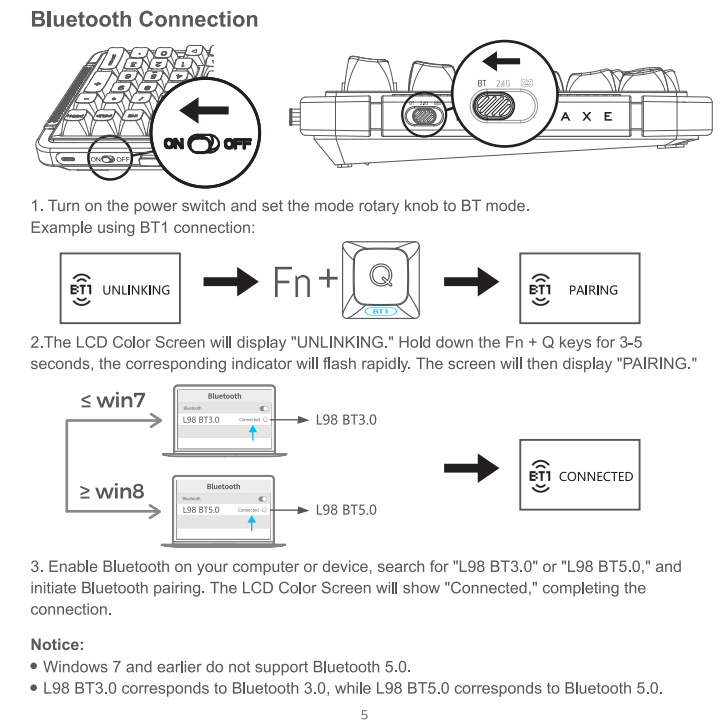
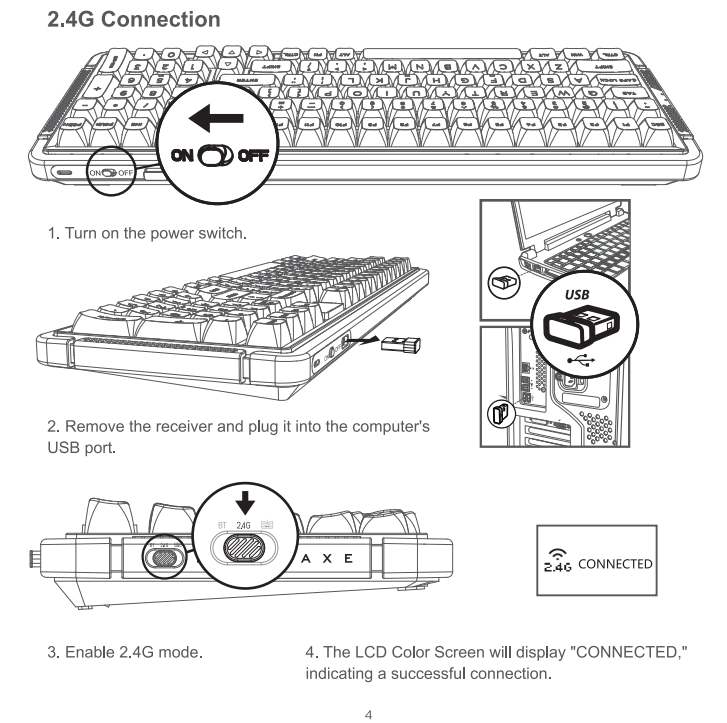
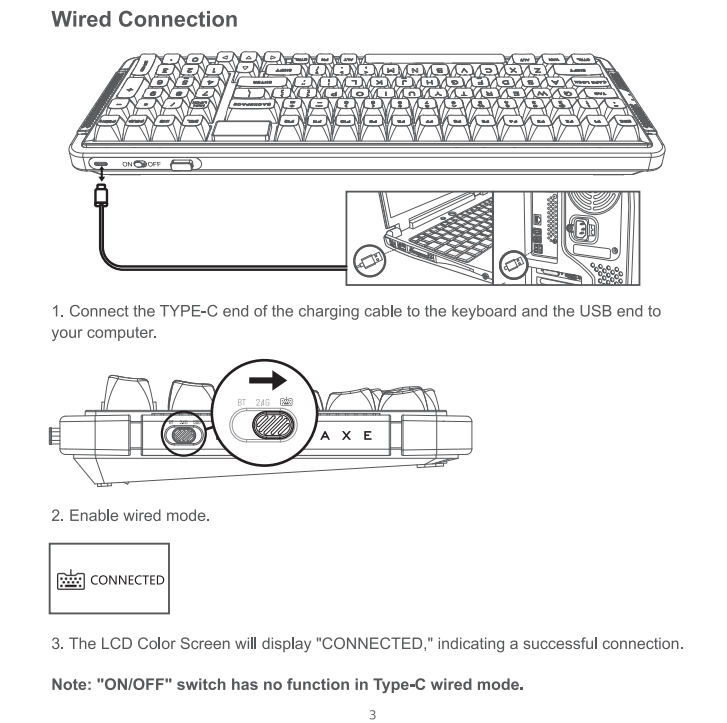


L98
BT 3.0/BT 5.0/2.4G/Wired Three Mode Mechanical Gaming Keyboard
Co-created by ProtoArc x RoyalAxe

USER MANUAL



- Function overview of the keyboard**
- Fn+↻ : Reset
 - Fn+☀ : Screen brightness -
 - Fn+☀ : Screen brightness +
 - Fn+🖥 : Multi screen display
 - Fn+⏪ : Back to the desktop
 - Fn+🎵 : Media Player
 - Fn+▶ : Play/Pause
 - Fn+⏮ : Prev song
 - Fn+⏭ : Next song
 - Fn+🔇 : Mute
 - Fn+🔊 : Volume -
 - Fn+🔊 : Volume +
 - Fn+⌨ : Input method switching
 - Fn+💡 : Light switch
 - Fn+🔆 : Switch the backlight mode
 - Fn+🔆 : Switch the side backlight led strip
 - Fn+🖥 : LCD color screen switch
 - Fn+📶 : Bluetooth mode 1
 - Fn+📶 : Bluetooth mode 2
 - Fn+📶 : Bluetooth mode 3
 - Fn+⌘ : Switch to IOS system
 - Fn+⌘ : Switch to MAC system
 - Fn+⌘ : Switch to WIN system
 - Fn+🔋 : Battery indicator
 - Fn+🔆 : Monochromatic light switching
 - LCD Color Screen
 - Cap Lock / Caps lock indicator
 - Num Lock / Num lock indicator
 - Low battery indicator
 - Fn+🔆 : Backlight frequency slows down
 - Fn+🔆 : Backlight brightness increase
 - Fn+🔆 : Backlight frequency slows down
 - Fn+🔆 : Increased backlight frequency
 - Wired mode
 - 2.4G wireless mode
 - BT Bluetooth mode
 - Type-C charging/wired interface
 - ON/OFF power switch
 - 2.4G receiver



Important safety and compliance information

Disposal of product and packing material

Waste Electrical and Electronic Equipment-WEEE
This product must not be thrown away with household waste. Instead, dispose of it properly by taking it to a designated collection point for waste electrical and electronic equipment (WEEE) recycling. This helps conserve natural resources and ensures proper recycling that protects health and the environment. For recycling location information, please reach out to your local city office, household waste disposal service, or the store where you purchased the product.

CE Declaration of Conformity
This device complies with Electromagnetic Compatibility Directive (2014/30/EU), ROHS Directive (2011/65/EU), and Radio Equipment Directive (2014/53/EU). Testing shows compliance with harmonized standards for Information Technology Equipment as outlined in the EU Official Journal.

Federal Communications Commission (FCC) Notice
This equipment has been tested and complies with Class B digital device limits under Part 15 of the FCC Rules. It is designed to provide reasonable protection against interference in a residential setting. If not installed and used as instructed, it may cause radio interference.

If the equipment interferes with radio or TV reception, the user should try to resolve it by:

- Reorienting or relocating the receiving antenna.
- Increasing the distance between the equipment and receiver.
- Plugging the equipment into a different circuit than the receiver.
- Consulting the dealer or a radio/TV technician.

Unauthorized changes or modifications may render the user unable to operate the equipment.

THIS CLASS B DIGITAL DEVICE COMPLIES WITH CANADIAN INTERFERENCE-CAUSING EQUIPMENT REGULATIONS.

FCC Compliance Statement
This device complies with Part 15 of the FCC Rules and operates within the following two conditions:
1. This device must not cause harmful interference.
2. This device must accept all interference received, including any that may cause undesired operation.

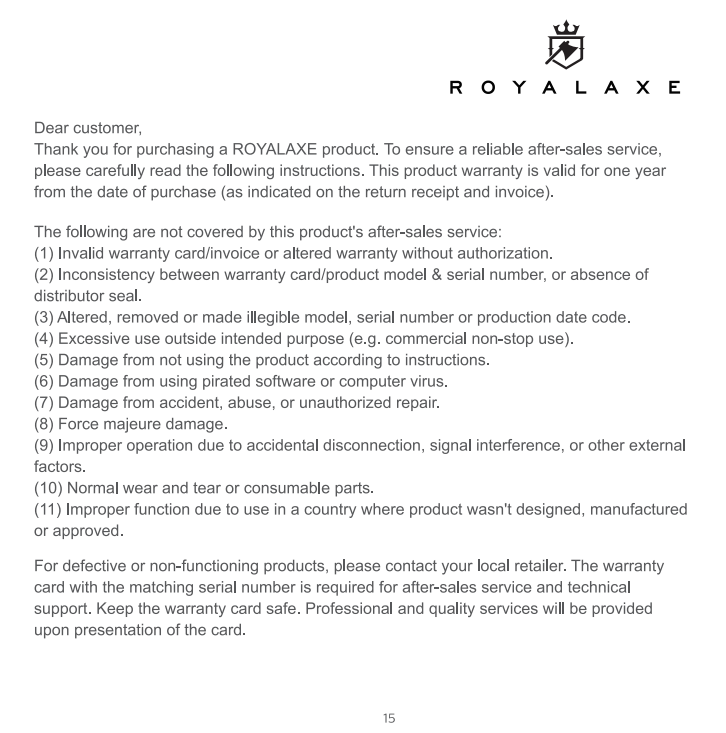
Commission Federale de La Communication
Cet équipement a été testé et déclaré conforme aux limites des appareils numériques de classe B. Cet appareil est conçu de manière à fournir une protection raisonnable contre les interférences nuisibles dans le cadre d'une installation résidentielle.

CET appareil produit, utilise et peut émettre des hyperfréquences qui, si l'appareil n'est pas installé et utilisé selon les consignes données, peuvent causer des interférences nuisibles aux communications radio. Cependant, rien ne peut garantir l'absence d'interférences dans le cadre d'une installation particulière. Si cet appareil est la cause d'interférences nuisibles pour la réception des signaux de radio ou de télévision, ce qui peut être détecté en fermant l'équipement, puis en le remettant en fonction, l'utilisateur pourrait essayer de corriger la situation en prenant les mesures suivantes:

- Reorienter ou déplacer l'antenne de réception.
- Augmenter la distance entre l'équipement et le récepteur.
- Brancher l'équipement sur un autre circuit que celui utilisé par le récepteur.
- Demander l'aide du marchand ou d'un technicien chevronné en radio/ télévision.

Toutes modifications n'ayant pas reçu l'approbation des services compétents en matière de conformité est susceptible d'interdire à l'utilisateur l'usage du présent équipement.

CET APPAREIL NUMERIQUE DE LA CLASSE B RESPECTE TOUTES LES EXIGENCES DU REGLEMENT SUR LE MATERIEL BROUILLEUR DU CANADA.



Commodity Information	Name	
	Place of origin	
	Model No.	
User info.	Serial No.	
	Name	
	Address	
	Tel.	
	Postcode	
Sales info.	Retailer	
	Address	
	Tel.	
	Postcode	
	Date	
Maintenance info.	Invoice No.	
	Store & Signature	
	Dear customer, the above information is to be filled in by the seller. Please cooperate with us. Thank you!	
	The following information shall be filled in by the maintenance agency and returned to the customer.	
	Maintenance company name	
Address		
Tel.		
Postcode		
Document No.		
Date		
Signature		

ProtoArc | **ROYALAXE**

Customer Support :
Email: support@protoarc.com

Co-created by ProtoArc x RoyalAxe
Manufacturer: Dongguan Lingjie Electronics & Technology Co., Ltd
Address: No. 23 Zhenxing North Road, Xiegang Town, Dongguan, Guangdong, China
Web: <https://www.protoarc.com>