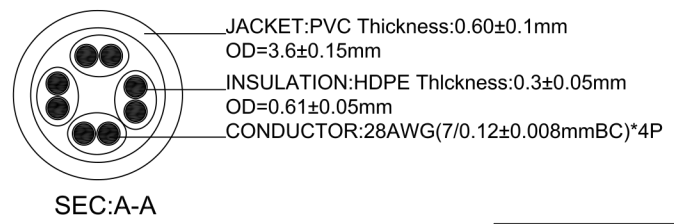
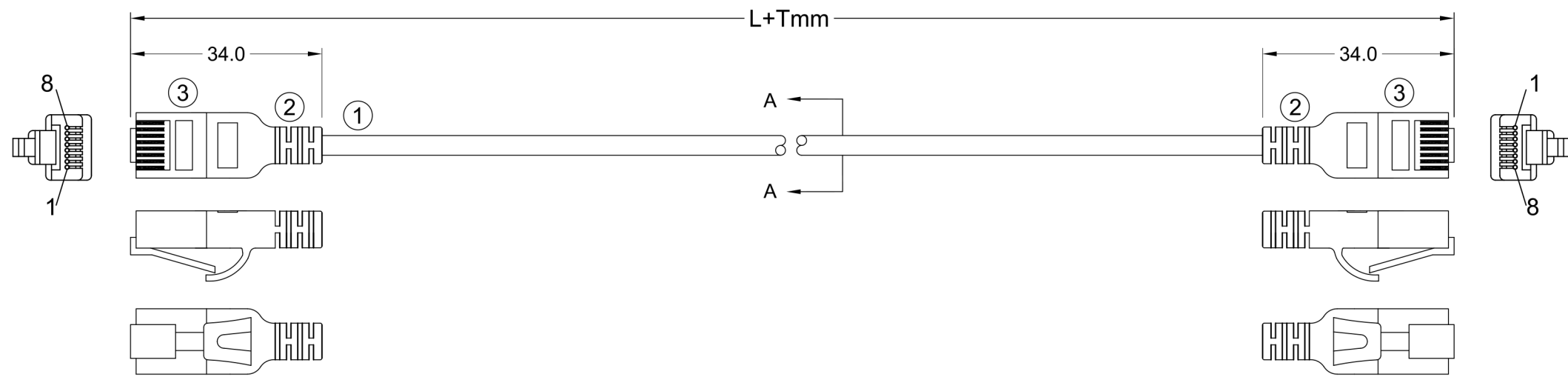


NOTE: ALL MATERIAL COMPLIANT ROHS STANDARD


REVISION INFORMATION			
Rev.	Rev. Date	Modified By	Brief Description



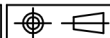
orange 1 white/orange	green 2 white/orange
blue 3 white/blue	brown 4 white/brown

PINOUT		
P1	WIRE	P2
1	WHITE/ORANGE	1
2	ORANGE	2
3	WHITE/GREEN	3
6	GREEN	6
5	WHITE/BLUE	5
4	BLUE	4
7	WHITE/BROWN	7
8	BROWN	8

	LENGTH(FT)	TOLERANCE
	0.5	± 15mm
	1	± 15mm
	1.5	± 15mm
	2	± 15mm
	3	± 15mm
	5	± 20mm
	7	± 30mm
	10	± 30mm
	15	± 30mm
	20	± 60mm
	30	± 60mm
	50	± 80mm



BigCatCables

DRAWN BY	DATE: 2018/11/06	DESCRIPTION: UTP Cat 6A PATCH CORD
CHECKED BY	SHEET 1 of 1	ITEM NO. BC-028-xx
APPROVED BY	SCALE 1:1	REV. 00 UNIT: mm 

NO.	PART NAME	SPECIFICATION DESCRIPTION	QTY	UNIT
③	RJ45 PLUG	8P8C 50U" GOLD PLATED TWO-PIECE PLUG.		
②	MOLDED	PVC SHORT MOLDED BOOT		
①	CABLE	CAT6A UTP 4P/28AWG(7/0.12±0.008MM BC) OD=3.6±0.15mm		