

Adventure Pack



USER GUIDE

The Drankful Adventure Pack is known as the Holy Grail of Hydration Packs. It was designed to take the slosh and bounce out of the typical hydration pack experience and replace it with a smooth, comfortable experience in motion with fluids. This pack is unisex in nature and comes equipped with a hydration reservoir and drinking tube for lightning fast and hands-free hydration on the move.



First things first; thank you so much for purchasing the Drankful Adventure Pack. Your purchase supports clean and safe drinking water to those in need.

Please read this guide for best practices regarding product set-up, use, and cleaning.



1. Reflective Strip
2. Elastic Pass Through
3. Adjustable Sternum Strap
4. Tunnel System
5. Reflective Strip
6. Elastic Pass Through
7. Adjustable Sternum Strap
8. Tunnel System



1. Pull Tab
2. Weather Resistant Zipper
3. Gusseted Expandable Pocket
4. Magnetic Closure
5. Cinch Strap
6. Gusseted Expandable Pocket





1. Key Clip in Pocket
2. Soft Flask Pocket
3. Dump Pocket
4. Zipper Pocket
5. Slidings Rails
6. Safety Whistle in Pocket
7. Soft Flask Pocket
8. Dump Pocket
9. Sliding Rails
10. Zipper Pocket



1. Foam Protective Paneling
2. Hidden Pocket with Bungee
3. Attachment Point
4. Reflective Binding
5. Attachment Point
6. Hidden Pocket with Bungee
7. Attachment Point
8. Reflective Binding
9. Attachment Point
10. Hidden Zipper

Content Page

Technical Details	5
Sizing	6
Setting Up your Drankful Adventure Pack	7
Fastening your Pack	13
Hydration	14
Using your Adventure Pack	20
Cleaning Instructions	23
Exchange Policy	24
Frequently Asked Questions	25
Every Sip's a Gift	26
Contact	27



Technical Details

Sizing available:

Small, Medium, Large, X-Large

Hydration bladder (Included):

1.5L

Cinch straps:

Included

SMALL

Spec	Weight	Volume
14"H x 10.5"W x 13"D	0.51 kg	8 Liters

MEDIUM

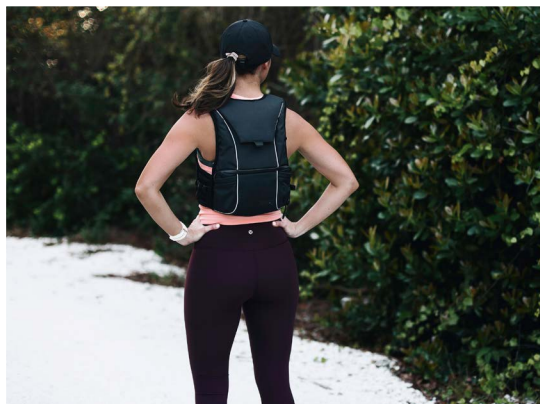
Spec	Weight	Volume
14.5"H x 11.5"W x 13.5"D	0.52 kg	8 Liters

LARGE

Spec	Weight	Volume
15"H x 12.5"W x 14"D	0.55 kg	9 Liters

X-LARGE

Spec	Weight	Volume
15"H x 12.5"W x 14"D	0.57 kg	9 Liters



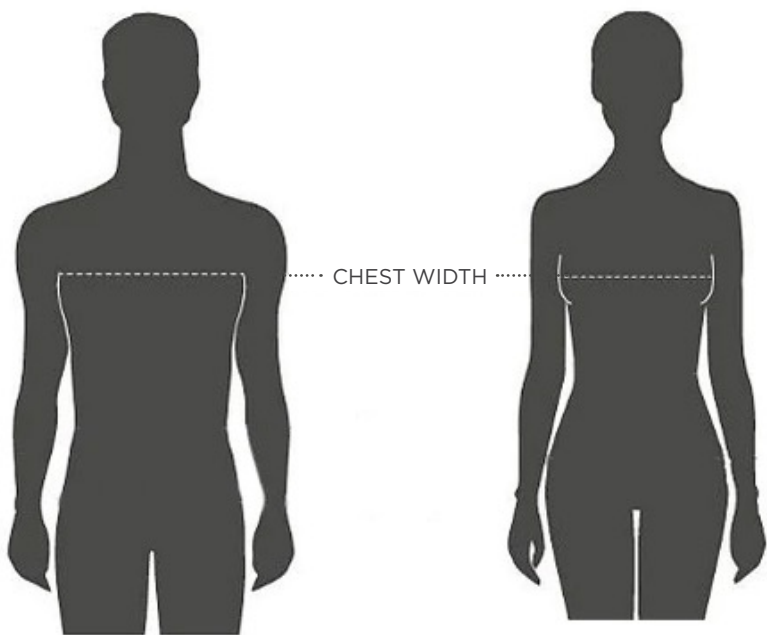
Sizing

To get the most accurate sizing of which pack will fit you the best, measure the circumference around your chest at its largest point. Once that number is found, please refer to the Sizing Chart to find which size Adventure Pack to choose.

Sizing Chart: Drankful Adventure Pack

Size	Chest (in)
Small	31" - 35"
Medium	36" - 40"
Large	41" - 45"
X-Large	45" + chest

How to Measure



Setting up your Drankful Adventure Pack

The Drankful Adventure Pack is designed to be minimal and stealthy in appearance, but packed rich with features and benefits. In order to achieve maximum performance for smooth hydration, please follow the steps below for proper set-up.

STEP 1



Fill bladder up with water

STEP 2



Open bottom zipper of the vest

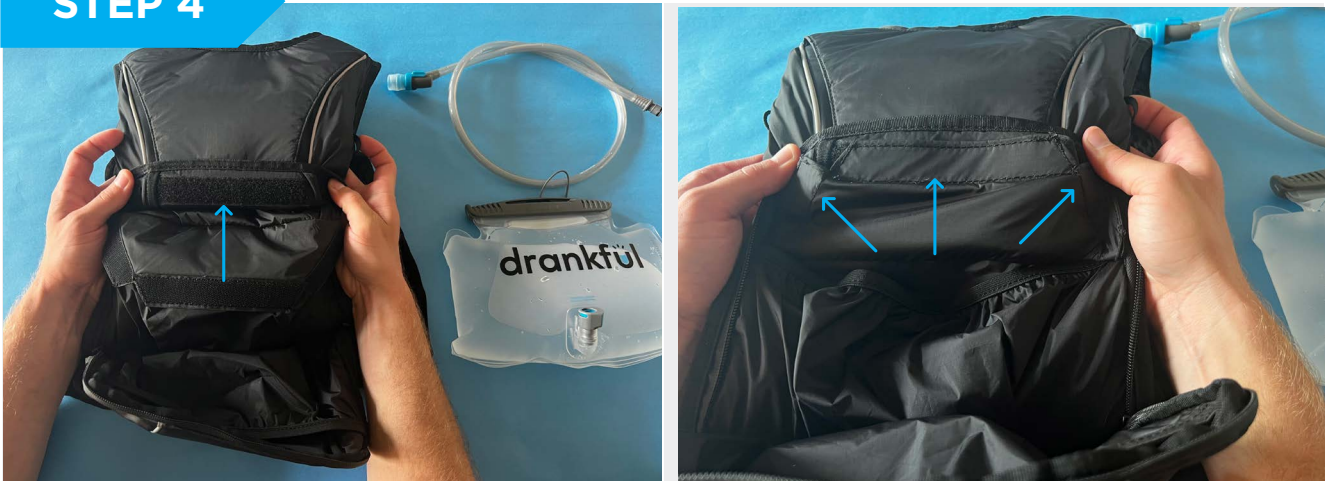


STEP 3



Detach divider from the velcro on back lining and pull down

STEP 4



Reattach divider to the velcro that's located right above the zipper (all 3 tabs)



STEP 5



Flip vest over

STEP 6



Slide the bottom end of the hydration tube into the tunnel system

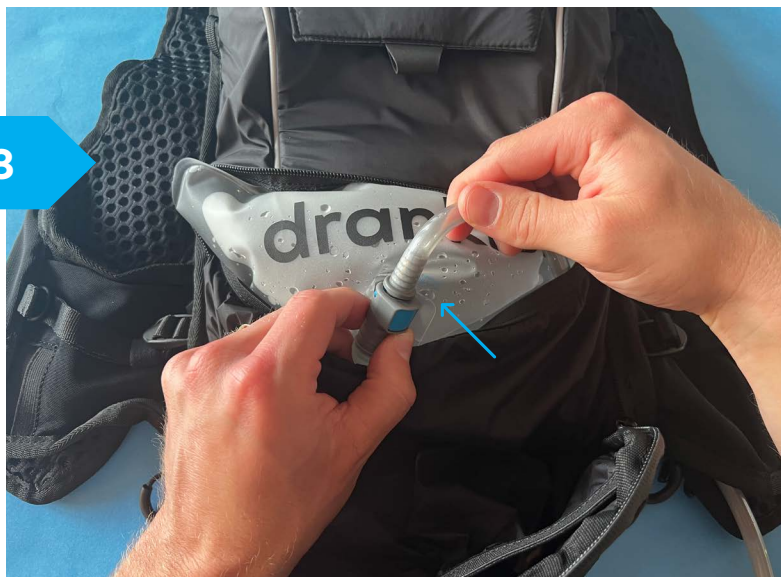


STEP 7



Flip vest back over and insert bladder into hydration sleeve

STEP 8



Attach the tube to the bladder

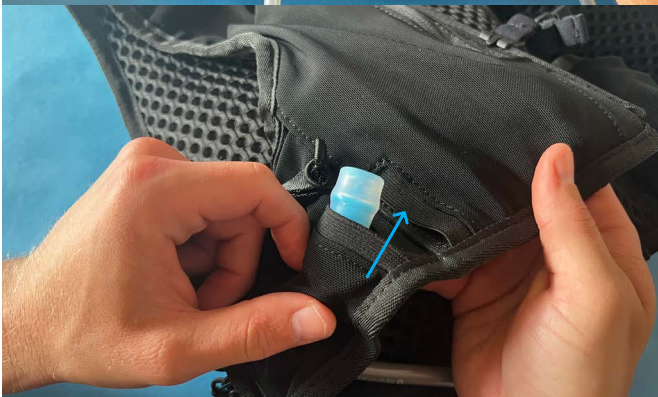


STEP 9



Zip the bottom compartment back up

STEP 10



**Feed the tube through the tunnel system until it breaches through the front side of the vest.
*Make sure there are no kinks in the tube.***



STEP 11



Slide tube through either side of the elastic tube holders



Fastening your Pack

The Drankful Adventure Pack comes equipped with multiple fastening systems and straps that are easily adjustable to adapt to your individual body shape.

The following 4 areas can be tightened and/or loosened to achieve your perfect fit.



Hydration

Drankful prioritizes smooth and quick hydration on the move. This is accomplished by creating stabilized water carrying solutions that reduce the slosh and bounce out of your athletic movement.



Each Drankful Adventure Pack comes with one 1.5L hydration reservoir. This is to be inserted into the hydration sleeve located on the bottom shelf of the pack.



The Drankful Adventure Pack can also hold two 500mL soft flask bottles in the front pockets of the vest. These are not included and can be purchased separately.



Opening the hydration bladder for the first time

Brand new reservoirs may take more effort to open on the first use. After the reservoir is open for the first time, it will be much easier to open for the rest of the life of the product.

Here's how to do it.



Grasp the grey slider seal and pull until it slides off of the top of the reservoir.



Flip the flap up.





Located towards the top of the flap, pull the thin TPU material away from the top in opposite directions.

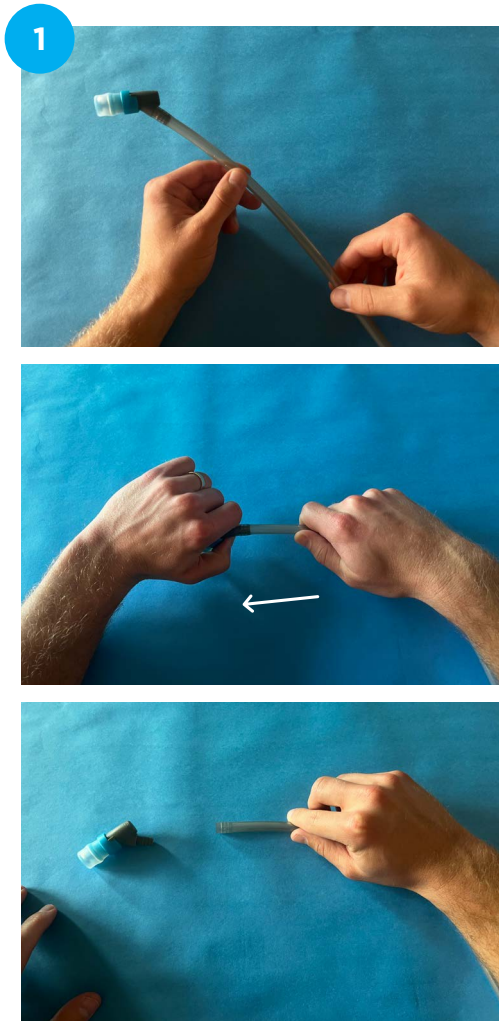


This will open your reservoir and you'll be ready to fill it up.



The hydration tube can be shortened

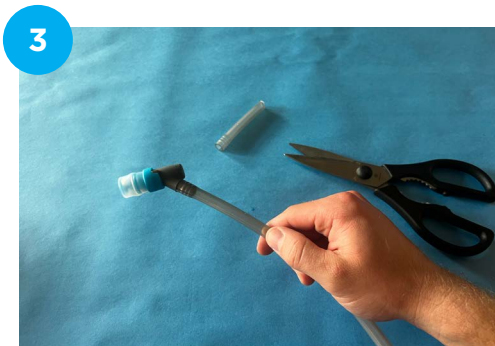
Everyone's body structure is different. If the tube feels too long, it can be shortened down to fit your desired length. Here's how.



Pull the bite valve off



Cut with a sharp pair of scissors or blade to your desired length



Press the bite valve back on

P.S. please double check your measurements before you cut!



How to use the bite valve



Bite down on the soft portion of the valve and suck at the same time. This will start the flow of water to your mouth. When you're finished drinking, the valve will self-seal when not in use.

To further protect against accidental spilling, you can also rotate the (blue) body of the valve 90 degrees until it is positioned on the mark with an "X". This will shut off any flow of liquids. To take another sip, the valve will have to be positioned back to the mark with an "O."



Using your Adventure Pack

The Drankful Adventure Pack has an intuitive design that can be customized to your unique needs. Every detail was made to enhance your hydration-carrying experience for both short and far distances.

Drawbridge Divider

To separate your fluids from your gear, a drawbridge divider organizes the pack into 2 compartments. This creates compact, shelved space to keep your hydration bladder secure, and your personal items neat and tidy.

If more space is desired and the hydration bladder is not being used, the drawbridge divider can be securely moved out of the way altogether. Simply detach the velcro tabs from the velcro strips (above the zipper) and attach them back to the velcro strip located on the back lining of the pack. This opens the pack up for larger, longer, and bulkier items to fit inside.



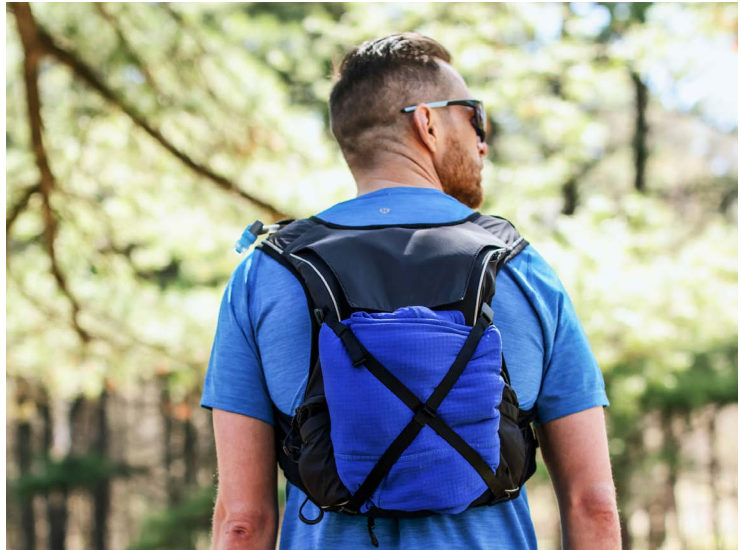
Tunnel System

Throughout the pack is a strategically placed tunnel system. This creates a practical and sleek route for the hydration tube to pass through. It can also become a spot to tuck in any dangling, swinging straps.



Cinch Straps

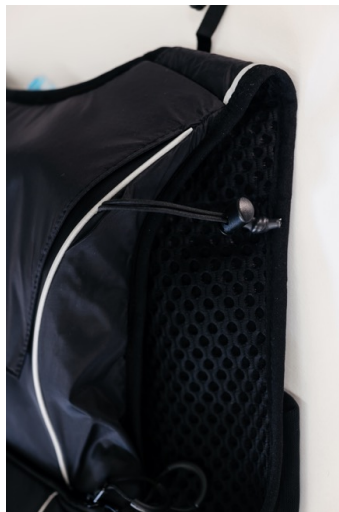
The Drankful Adventure Pack comes with 2 cinch straps located in the bottom shelf of the pack. These straps quickly and easily connect to the hidden attachment points so you can lock down any extra, bulkier gear that may not fit in the confines of the pack.



Pole Carrying System

Trekking poles can help you maneuver up and down hills with more efficiency and power. The Drankful Adventure Pack carries trekking poles intelligently and securely. Here's how they fit.

1. Deploy the hidden bungees from the top of the pack.
2. Slide each pole into the gusseted rear pockets
3. Cinch down the top of the poles with the bungees



Magnetic Lid

Opening and closing the pack with a magnetic assist makes accessing your gear fast, effortless, and fun. To open, simply pull down on the pull tab and the magnet will release from its connection. To close, hover the pull tab near the magnet and the magnetic connection will reconnect and self-seal the lid.



Cleaning Instructions

Drankful's packs and bladders are designed to take the abuse from trail runners, mountain bikers, hikers, and serious outdoor enthusiasts. With that comes sweat, dirt, and grime. It is important to clean your packs and bladders regularly so they remain in top shape for many adventures ahead.

How to clean the Drankful Adventure Pack

All packs are hand wash only using soap and water. Then air dry. Do not put them in the washing machine or dryer.

How to clean the bladder

The reservoir is fully reversible, making both cleaning and drying easy and efficient. First, place your hand inside the reservoir, grab the bottom, and turn the reservoir inside-out (like a sock). Then, you can either place it on the top-shelf of the dishwasher or rinse by hand with mild soap and water. Dry completely before reusing.

How to clean the tube and bite valve

All components are removable to make your cleaning experience a breeze. Disconnect the drinking tube from the reservoir and pull the bite valve off to remove the valve from the tube. Clean both tube and valve with mild soap and water. Dry completely before reinserting the components back together.



Exchange Policy

Drankful makes size exchanges quick and easy. Once you receive your pack, try it on to see how it fits. If you'd like a different size, we can do an exchange just as long as the following conditions are met.

1. It's in brand new condition (never been worn for any type of exercise/activity yet)
2. All the original tags are still on it
3. It's within 30 days from the date of delivery

If all 3 conditions are met, please email hello@drankful.com and we'll be happy to begin the exchange process.



Frequently Asked Questions

Are the reservoirs BPA free?

Yes, they are BPA and PVC free.

What can I put in my reservoir?

The recommended liquids and nutrition products for the reservoir are as follows:

- Water
- Electrolyte drinks
- Nutritional gels
- Powdered protein
- Cleaning tablets

We advise not putting the following liquids in your reservoir, as they can leave a lasting taste in the film, cause the film to change color, and in some cases may degrade the material:

- Coffee
- Tea
- Juice
- Cooking oil
- Milk
- Any liquid above 140 °F (60 °C)

We also recommend that you do not put any of the following liquids into your reservoir:

- Alcoholic beverages
- Anything highly acidic, such as vinegar
- Anything highly basic, such as ammonia
- Fuel
- Motor/Machine oil

Can I freeze my reservoir?

Yes, but please don't fill it all the way up before you put it in the freezer. Ice expands and it could split open the film if it's completely full. As soon as you remove the reservoir from the freezer, we recommend adding a little bit of cold water to the frozen liquids to break up any potential sharp ice shards that could potentially puncture the film.

What temperature can my reservoir handle?

The reservoir was designed to carry both cold and warm water. It can be completely frozen and reach a maximum temperature of 140°F.

Is the reservoir dishwasher safe?

Yes, it is. Please use the top-shelf of the dishwasher.



Every Sip's A Gift

Drankful's mission is to accelerate clean and safe drinking water for everyone. We believe that everybody deserves quick access to clean and safe drinking water. That's why when you purchase a Drankful pack, you're also giving the gift of clean drinking water to someone in need.

Now go out there and enjoy the ride.

The Drankful Adventure Pack is as comfortable as it is sleek, and as smooth as it is fast. So whether you're running, biking, hiking, or going on some type of epic adventure, we're here to make sure you stay effortlessly hydrated every step of the way.





CONTACT

Email:
hello@drankful.com

Additional information and resources:
www.drankful.com