



# ELECTRIC MINI FOOD CHOPPER

Product operating instructions



Please refer to the actual item in the package.  
The image is for informational purposes only.  
Please read the operating instructions carefully  
before using the product and store it properly!



Follow us on Instagram



# CONTENTS

Safety precautions	-----	1
Names of components	-----	3
How to assemble	-----	4
Food handling directions	-----	6
Failure analysis	-----	7
Cleaning and maintenance	-----	8
Statement of food contact materials	-----	9
Environmental protection and safety	-----	9
Technical specification	-----	11

# Safety precautions

1. This product is suitable for kitchen use only. It should not be used for any other purpose.
2. Be sure to turn off the switch before adjusting any part of the product.
3. This product has a built-in lithium battery. It is strictly forbidden to open the sealed parts of the product without the express approval of the manufacturer to avoid battery damage or other hazards.
4. Before adding ingredients, please make sure the blades are installed in the correct position and working smoothly; it is forbidden to run the blades with the food container empty. When finished processing, please wait for the motor and blades to stop spinning before removing the main unit.
5. This product cannot be used to process food ingredients that are too hard, such as coffee beans, soybeans, rice, or frozen meat.
6. Please operate strictly according to the rated working time: it is recommended not to use it for more than 30 seconds at a time. If you don't get the desired result, cool the product for 2 minutes before using it again. Every 30 seconds of use stop for 2 minutes and continue for 3 cycles. After that, stop for 30 minutes and wait for the motor to cool down before repeating this procedure. This method will help extend the life of the product.

7. If the product stops working during usage, it may be caused by the protection program. In this, please release the trigger button and let it cool down for 2 minutes before using the product again.

8. Please note that after using to perform cleaning, it is necessary to be careful in grasping the top end with the blades when opening the food chopper.

9. Except the part with the motor; all parts of this food chopper can be washed in dishwasher.

10. The product must be stored out of the reach of children. Please do not allow people who are not physically healthy, have emotional or mental problems, or lack the necessary experience to use or play with this product.

11. This product has a built-in lithium battery. Please pay attention to the following:

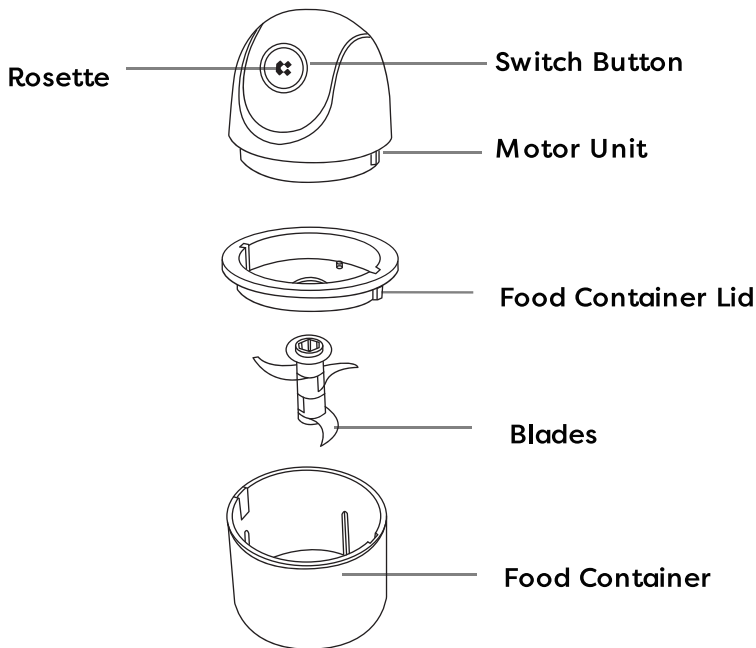
A. When the power is insufficient, the indicator LED will turn red. Please recharge the unit in time.

B. Please use and store the product at 0-40 °C.

C. If you don't use the food chopper for a long time, please recharge it every three months to avoid battery damage.

12. If you decide to throw away the product, please handle it properly. Remove the battery and seal the positive and negative ends separately. Please do not throw the battery into the waste bin.

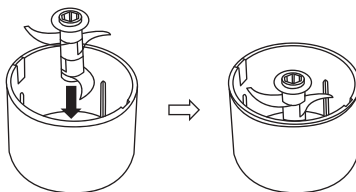
# Names of components



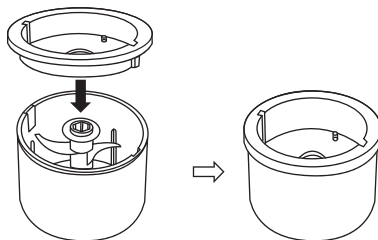
Note: Product includes two optional food containers  
(200ml container + 3-layer blades)

# How to assemble

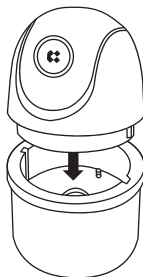
1. Open the food container lid and insert the blades.



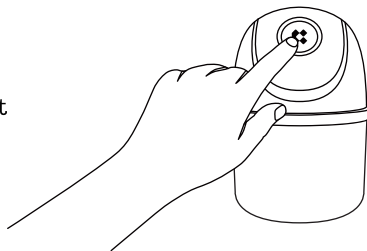
2. Insert the proper number of ingredients and close the container lid.



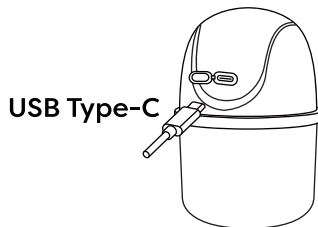
3. Install the main unit by interlocking the two guide recesses as shown in the picture.



4. Press and hold the button to start chopping the ingredients.



5. When there is insufficient power, open the silicone protector covering the power jack and connect the cord for charging.



Note:

Due to the restrictions of some commercially available USB power supplies, some power supplies may not be able to provide the necessary power to charge the food chopper (DC 5V 1 A). This causes the charging LED to not light up. Please use only cell phone power supplies that support the 5V 1A standard.



# Food handling directions

Food name	Suggested size	Maximum capacity (200ML cup)	Recommended operating time
Garlic	15*15*15mm	80g	5 seconds
Pepper	15*15*15mm	60g	15 seconds
Carrot	15*15*15mm	60g	8 seconds
Green Chinese onion	15*15*15mm	25g	5 seconds
Ginger	15*15*15mm	70g	10 seconds
Pumpkin	15*15*15mm	90g	8 seconds
Onion	15*15*15mm	60g	5 seconds
Lean meat	15*15*15mm	80g	25 seconds

# Failure analysis

Symptom	Problem analysis	Troubleshooting
Fully charged, key pressed on, the product does not work	The main body of the food chopper is not installed properly with the container.	Align the main body the food chopper with the two slots in the container so that they fit properly.
Unpleasant odor	1. The product is new, so the phenomenon is normal.	1. Please contact the after-sales service if the product keeps emitting this odor after repeated use.
	2. The amount of ingredients placed in the container is too high, or the time of use is too long.	2. Reduce the amount of food being processed and wait for the food chopper to cool for 30 minutes before using it again.
Shutdown during use	1. The battery is low.	1. Fully charge the product before use.
	2. Prolonged and continuous use causes excessive temperature rise	2. Pause for 30 minutes before use.
Vibrations or abnormal noises	1. The blades are not installed in place.	1. Remove the ingredients and install the blades again.
	2. The product is unstably positioned.	2. The product is stably positioned.
	3. Excessive amount of ingredients	3. Take out the ingredients and cut them into small pieces.
Blades are locked	Blades are caught or stuck due to food	Extract the ingredients and cut them into small pieces.

Note:

The above is a common failure analysis and troubleshooting methods. For different malfunctions, please contact customer service. Do not disassemble and repair by yourself.

# Cleaning and maintenance

1. Please clean the cup, blades and container lid immediately after use.
2. When cleaning, please rinse the food container and food contact accessories with clean water and then dry them. The blades are very sharp. When cleaning the blades, do not touch them directly with your hands. It is recommended to clean them with a brush.
3. The container lid, blades and food container should be cleaned with an appropriate amount of detergent. Finally, rinse with water.
4. With the exception of the main unit, the other parts of this product can be cleaned in the dishwasher, but cannot be placed in other high temperature cleaning equipment.
5. Please store the product in a dry and ventilated place after use. Make sure the product is clean and dry so as not to affect the safety of electrical appliances.

# Statement of food contact materials

Part name	Material	Note
Cup cover	PP	/
Knife carrier	POM	/
Cup	AS	/
Cutter blade	SUS420	/
Arbor screw	SUS304	/
Host machine	ABS	/
Note: 1. This product and its food contact parts comply with food safety standards.		
2. Executive standard: EN55014-LEN55014-2,EN61000-32EN61000-33		

## Environmental protection and safety

In order to meet the requirements of the "Administrative Measures on the Restriction of the Use of Hazardous Substances in Electrical and Electronic Products", the following provides the names of the electrical product components and information on the hazardous substances that may contain.

Part	Content of toxic and harmful substances					
	Lead (Pb)	Mercury	Cadmium	Hexavalent chromium (Cr6 +)	Polybrominated biphenyl (PBB)	Polybrominated diphenyl ether (PBDE)
		(Hg)	(Cd)			
Cup	0	0	0	0	0	0
Knife assembly	0	0	0	0	0	0
Electric machine assembly	0	0	0	X	0	0
Frame	0	0	0	0	0	0
Interior line	X	0	0	0	0	0
Charging cable	X	0	0	0	0	0
Other (screw)	0	0	0	X	0	0
PCB board assembly	X	0	0	0	0	0
Battery	0	0	0	0	0	0

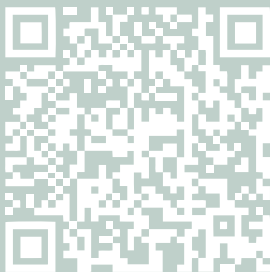
# Technical specification

Product name	Product model	Operating voltage	Rated voltage	Operating power	Rated current
Ciarra Portable Mini Food Chopper	CP-4401	DC 3.7V	5V	45W	1A

Product executive standard:

EN55014-LEN550142EN61000-32EN61000-3-3





Follow us on Instagram

