



Installation Manual

- APB Big Brake Kit fitment is 100% bolt on, no additional washer needed, easy & fast installation.
- Forged calipers with the largest pistons that provide the strongest stopping force. Firm pedal feel with precise brake feedback provides driver with safety & confidence.
- 2-Piece slotted rotors, with the hardest structure, provide better stopping performance than factory rotors.
- APB kit comes with the largest off the shelf pads, easily to get when you need pads replacement.
- Contact us if you have any questions about installation at info@apbrake.com

You will receive package as below



Caliper	2 pc
Rotor	2 pc
Brake pad	1 set
Caliper bracket	2 pc
Bolt	4 pc

After dismount factory brake parts, please follow below instructions

1

Clear hub mounting surfaces with wire brush and sandpaper to remove rust and debris.



Before



After

2

Use sandpaper to grind the rotor to remove black anti rust coating from both sides.

(Squeaking issue might occur if rotor didn't get grinded, need to replace pads immediately to avoid further damage on rotors. APB is not responsible for warranty claim in this circumstances)

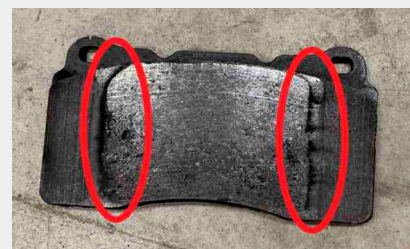


Before



After

Rotors without grinded will transfer anti rust coating to the pad that cause squeaking sound



3

Bolts on caliper bracket is required to torque 60 ft-lbs. (If over torqued, will cause damage on bolts and void warranty)

Bolts on caliper brake line is required to torque 18 ft-lbs.(If over torqued, will cause damage on bolts and void warranty)

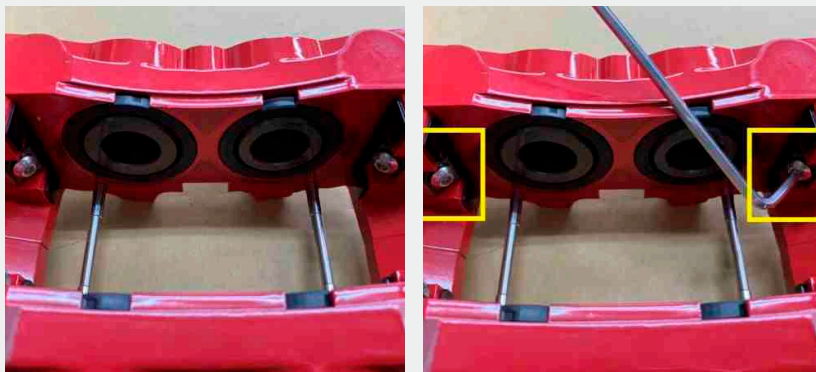
4

Caliper brake metal line is always face to the ground.



5

When mounting brake pad, please adjust the bolt with allen wrench inside caliper for better fitment of brake pad. (For 4 piston calipers only)



6

Make sure brake pad is well placed & fitted in caliper.

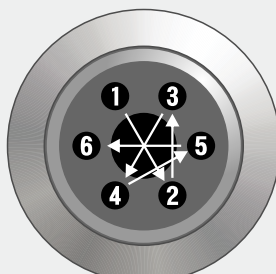


7

Please follow below instruction for lug nut tightening pattern.



5 Lug Nut



6 Lug Nut



8 Lug Nut