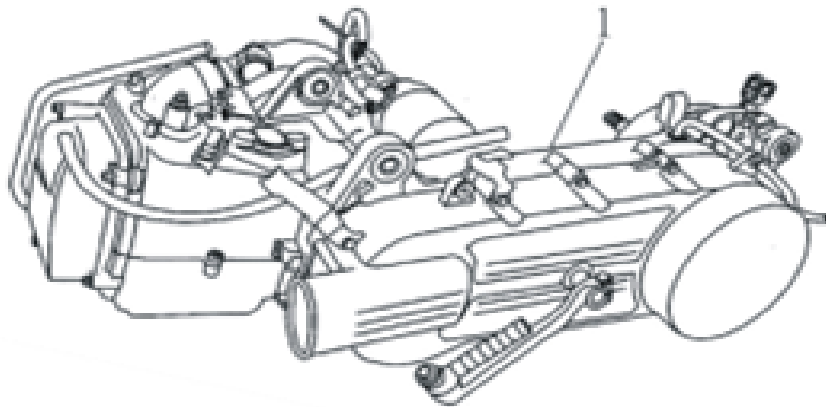


LISTA RICAMBI EAGLE 125CC EFI MOTORE

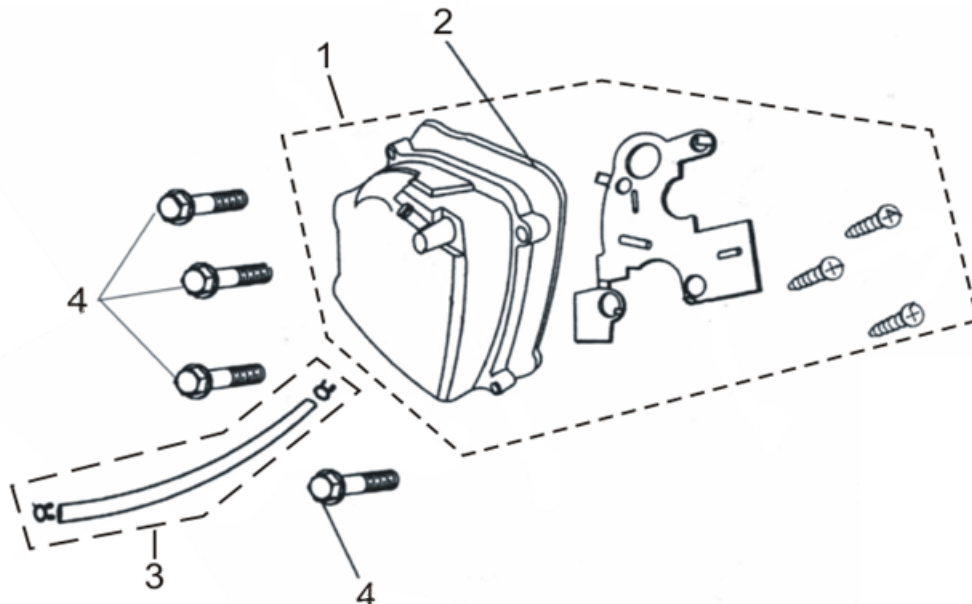
ENGINE



NO.	PART CODE	DESCRIPTION	QTY	NOTE
1	10100-GY57-0001	ENGINE ASSEMBLY	1	

24

CYLINDER HEAD COVER

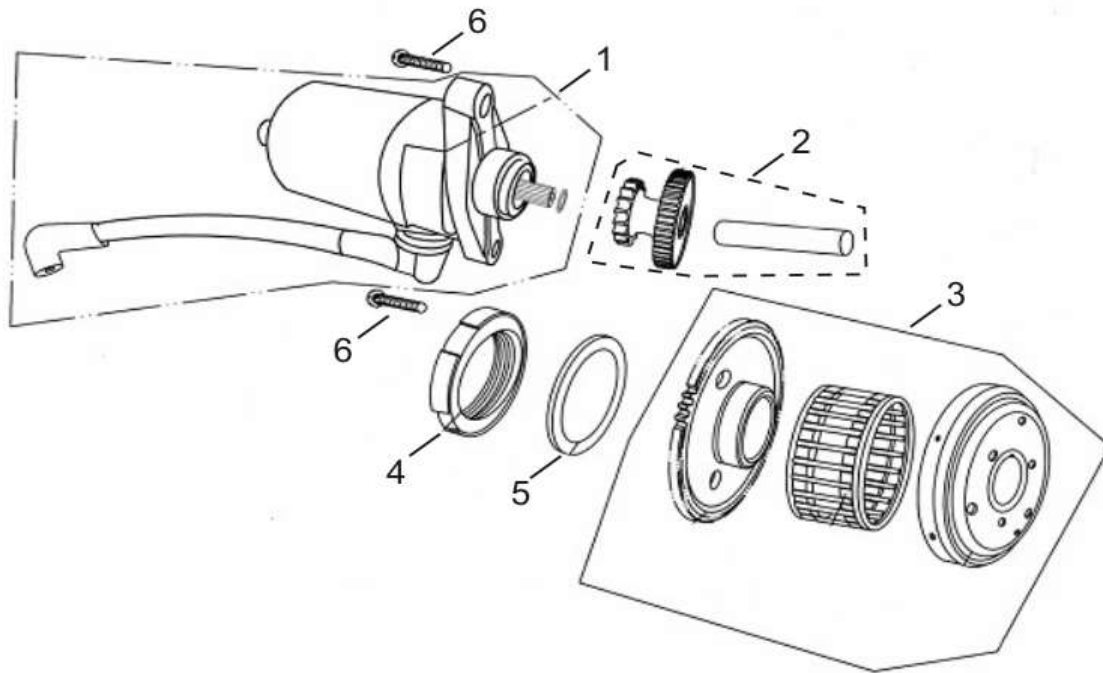


NO.	PART CODE	DESCRIPTION	QTY	NOTE
1	12310-GY57-0000	CYLINDER HEAD COVER	1	
2	12391-GY57-0000	WASHER,CYLINDER HEAD COVER	1	
3	11211-GY57-0000	VENT PIPE	1	

4	95701-06025-080	FLANGE BOLT M6*25(CHROME)	4	

25

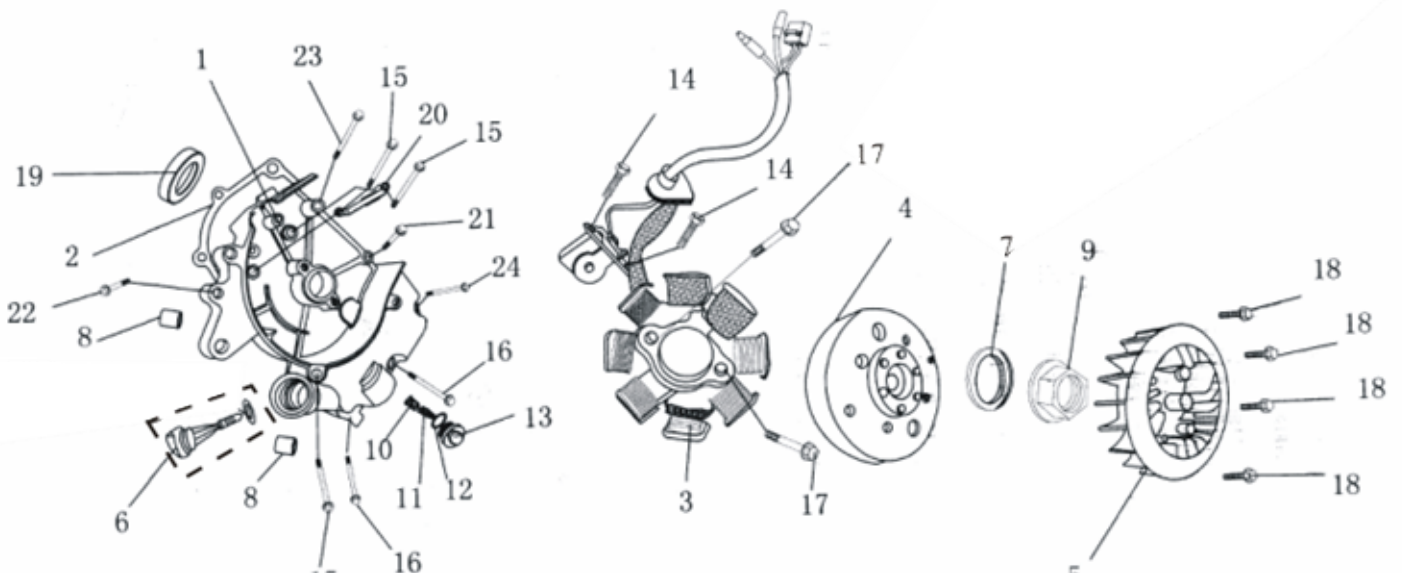
START MOTOR



NO.	PART CODE	DESCRIPTION	QTY	NOTE
1	31210-GY57-0000	STARTER MOTOR ASSY	1	
2	28101-GY57-0000	GEAR,STARTER REDUCTION	1	
3	2810A-GY57-0000	STARTER CLUTCH ASSY	1	
4	90201-GY57-0220	LOCKNUT M22	1	
5	90403-GY57-0000	WASHER 22(BLACK)	1	
6	96001-06016-000	FLANGE BOLT M6*16(CHROME)	2	

26

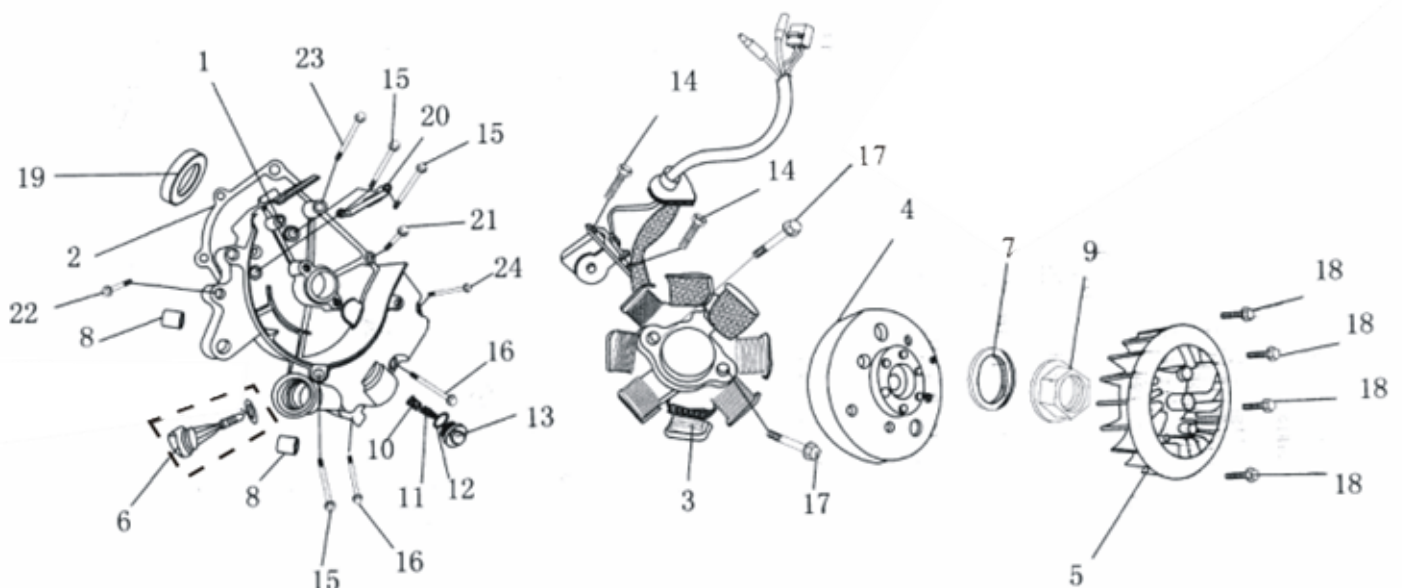
MAGNETO



NO.	PART CODE	DESCRIPTION	QTY	NOTE
1	11331-GY57-0000	R.CRANKCASE COVER	1	
2	11394-GY57-0000	GASKET,R.CRANKCASE COVER	1	
3	31120-GY57-0018	COIL ASSY	1	
4	31110-GY57-0018	FLY WHEEL ASSY	1	
5	19510-GY57-0000	FAN	1	
6	1565A-GY57-0000	OIL RULE(WITH O-RING)	1	
7	90440-GY57-0000	WASHER 12(BLACK)	1	
8	94301-08014-000	LOCATING DEWEL 8*14	2	
9	94050-12080-000	FLANGE NUT M12	1	
10	15421-GY57-0000	OIL FILTER	1	
11	15426-GY57-0000	SPRING,OIL FILTER	1	
12	91302-GY57-0000	O-RING 30.8*3	1	
13	12361-GY57-0000	OIL DRAIN CAP	1	
14	90101-05012-000	HEX.FLANGE BOLT M5*12	2	
15	96001-06095-080	FLANGE BOLT M6*95	3	
16	96001-06110-080	FLANGE BOLT M6*110(CHROME)	2	
17	96001-06022-080	FLANGE BOLT M6*22	2	
18	96001-06018-080	FLANGE BOLT M6*18	4	
19	91201-19830-050	OIL SEAL 19.8*30*5	1	
20	32961-GY57-0000	LINE CLAMP,MAGNETO	1	

27

MAGNETO

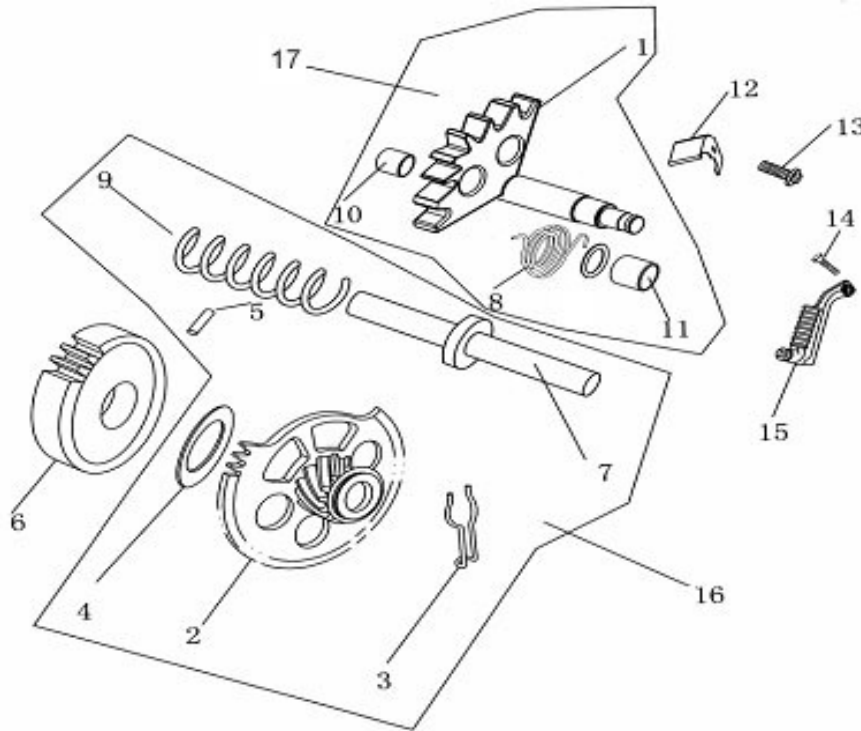


NO.	PART CODE	DESCRIPTION	QTY	NOTE
-----	-----------	-------------	-----	------

21	96001-06032-080	FLANGE BOLT M6*32(CHROME)	1	
22	96101-06035-000	HEX.FLANGE BOLT M6*35	1	
23	96001-06100-080	FLANGE BOLT M6*100	1	
24	96001-06095-080	FLANGE BOLT M6*95(CHROME)	1	

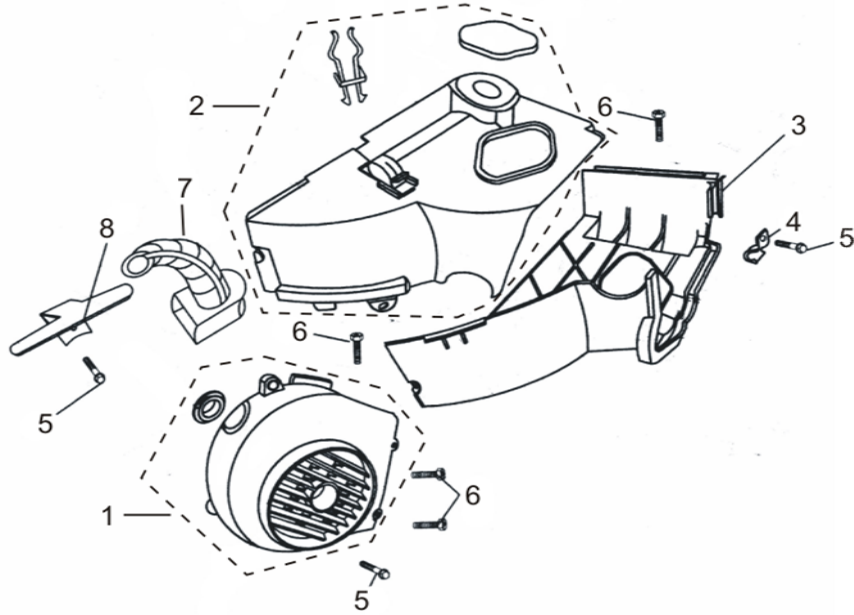
28

KICK STARTER ASSY



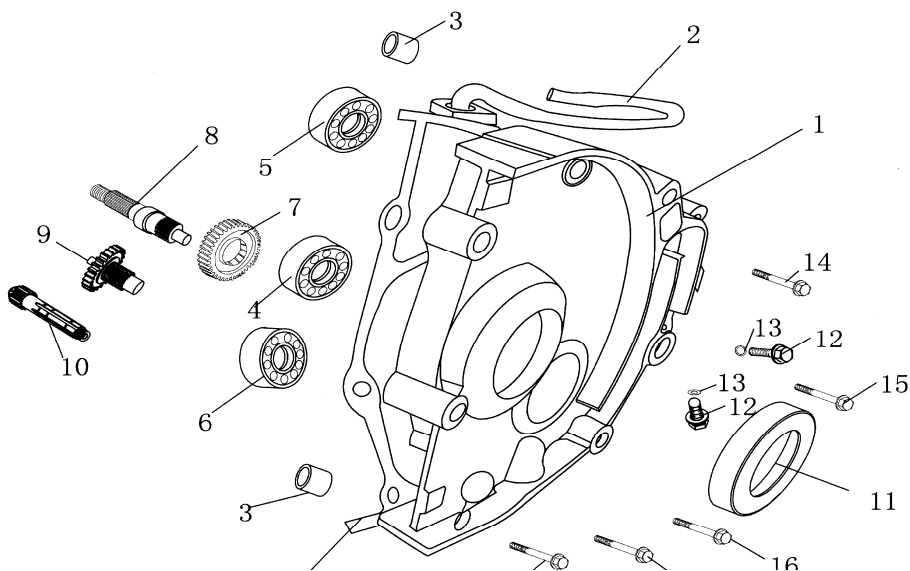
NO.	PART CODE	DESCRIPTION	QTY	NOTE
1	28250-GY57-0000	STARTER AXLE	1	
2	28231-GY57-0000	IDLER WHEEL GEAR	1	
3	28232-GY57-0000	ATTRITION SPRING	1	
4	28233-12022-160	PLASTIC WASHER 12*22*1.6	1	
5	94301-03085-000	CYLINDRICAL PIN3*8.5	1	
6	28220-GY57-0000	DRIVEN GEAR	1	
7	28234-GY57-0000	IDLER WHEEL AXLE	1	
8	28251-GY57-0000	RETURN SPRING,STARTER AXLE	1	
9	28235-GY57-0000	SPRING,IDLER WHEEL AXLE	1	
10	28252-GY57-0000	BUSH 1,STARTER AXLE	1	
11	28253-GY57-0000	BUSH 2,STARTER AXLE	1	
12	28254-GY57-0000	LOCK PLATE	1	
13	96001-06014-000	FLANGE BOLT M6*14(WHITE)	1	
14	95701-06022-000	HEX.BOLT M6*22(BLACK)	1	
15	28300-GY57-0000	START BAR(BEND)	1	
16	2820B-GY57-0000	IDLER WHEEL AXLE ASSY	1	
17	2820A-GY57-0000	STARTER AXLE ASSY.	1	

FAN COVER



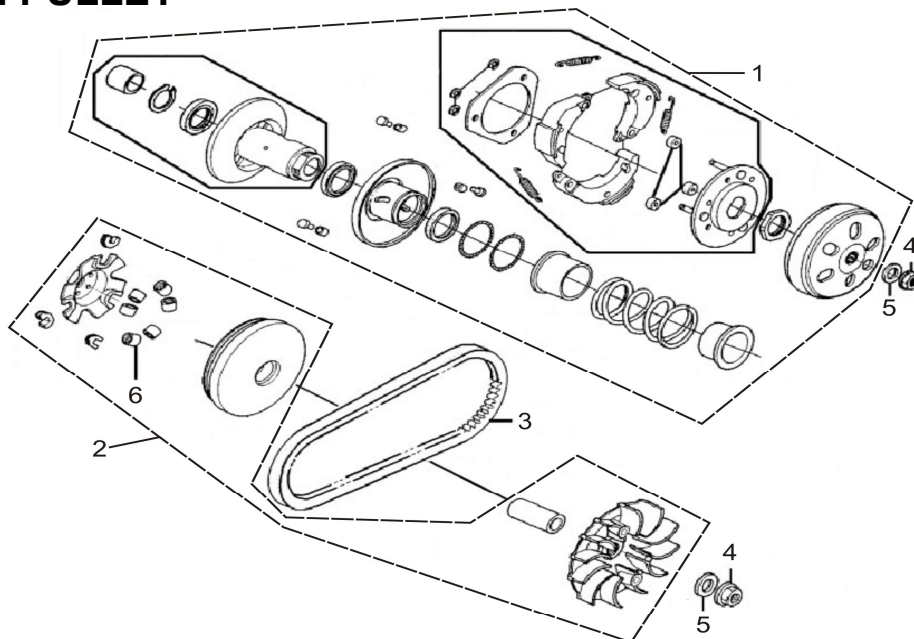
NO.	PART CODE	DESCRIPTION	QTY	NOTE
1	1961A-GY57-0000	COOLING FAN COVER(WITH RUBBER PLUG)	1	
2	1963A-GY57-0000	UPPER COVER(WITH GASKET)	1	
3	1962A-GY57-0000	LOWER COVER(WITH GASKET)	1	
4	19621-GY57-0000	CLAMP,OIL HEADER	1	
5	96001-06025-080	FLANGE BOLT M6*25(WHITE)	3	
6	19635-GY57-0000	CROSS HEAD,HEX.SCREW M5*16(BLACK)	4	
7	19611-GY57-0000	COOLING TUBE,CARBURETOR	1	
8	19634-GY57-0000	CLAMP,MOTOR LINE	1	

REAR GEAR BOX



NO.	PART CODE	DESCRIPTION	QTY	NOTE
1	21200-GY57-0000	GEARBOX COVER	1	
2	11221-GY57-0000	VENT PIPE,GEARBOX	1	
3	94301-08140-000	LOCATING DEWEL 8*14	2	
4	96100-62040-000	BEARING 6204	1	
5	96100-62020-000	BEARING 6202	1	
6	96100-62030-000	BEARING 6203	1	
7	23432-GY57-0000	FINAL GEAR	1	
8	23431-GY57-0000	FINAL SHAFT(LONG)	1	
9	23420-GY57-0000	COUNTERSHAFT	1	
10	23411-GY57-0000	DRIVE SHAFT	1	
11	91202-GY57-0000	OIL SEAL 20*32*6	1	
12	95701-08012-000	FLANGE BOLT M8*12(CHROME)	2	
13	90474-GY57-0000	GASKET 8(REDF)	2	
14	96001-06028-000	FLANGE BOLT M6*28(CHROME)	1	
15	96001-06035-000	FLANGE BOLT M6*35(CHROME)	1	
16	96001-06035-000	FLANGE BOLT M6*35(WHITE)	2	
17	96001-06035-000	FLANGE BOLT M6*28(WHITE)	2	
18	21395-GY57-0000	GASKET,GEARBOX COVER	1	

31

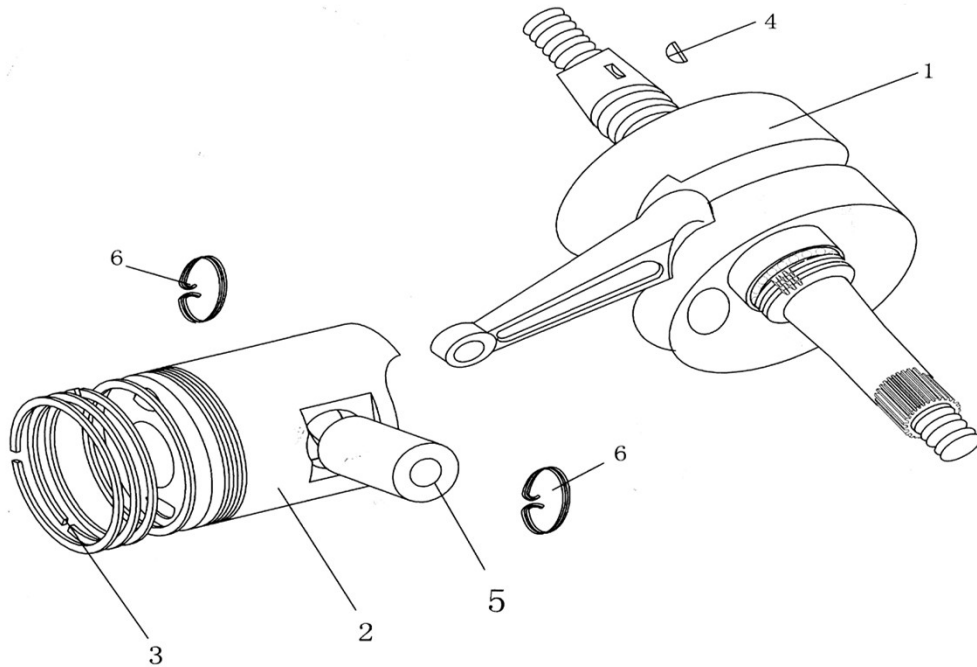
DRIVEN PULLEY

NO.	PART CODE	DESCRIPTION	QTY	NOTE
1	2301A-GY57-0000	DRIVING WHEEL ASSY	1	
2	2210A-GY57-0000	DRIVING DISK ASSY	1	
3	23100-GY57-0000	DRIVING BELT	1	

4	94050-12080-000	FLANGE NUT 12	2	
5	90441-GY57-0000	WASHER 12	2	
6	22121-GY57-0000	ROLLER COMP WEIGHT	6	

32

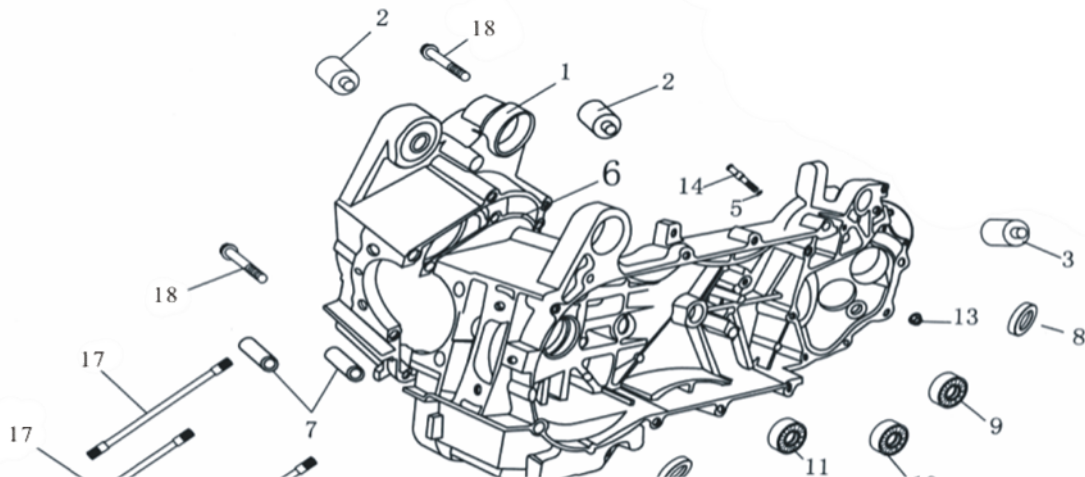
CRANKSHAFT & CONNECT ROD

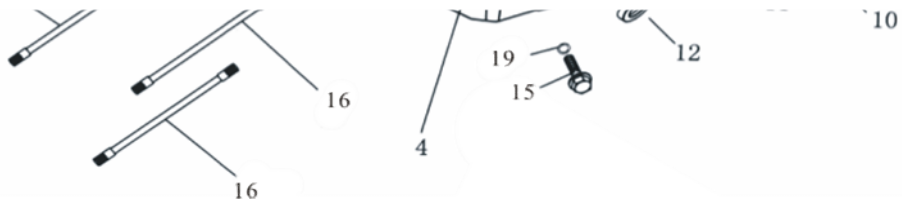


NO.	PART CODE	DESCRIPTION	QTY	NOTE
1	13000-GY57-0000	CRANKSHAFT&CONNECT ROD ASSEMBLY.	1	
2	13101-GY57-0000	PISTON	1	
3	13011-GY57-0000	PISTON RING COMP.	1	
4	90701-GY57-0000	WOODRUFF KEY	2	
5	13111-GY57-0000	PISTON PIN	1	
6	94601-GY57-0000	CLOSING RING,PISTON PIN	2	

33

CRANKCASE

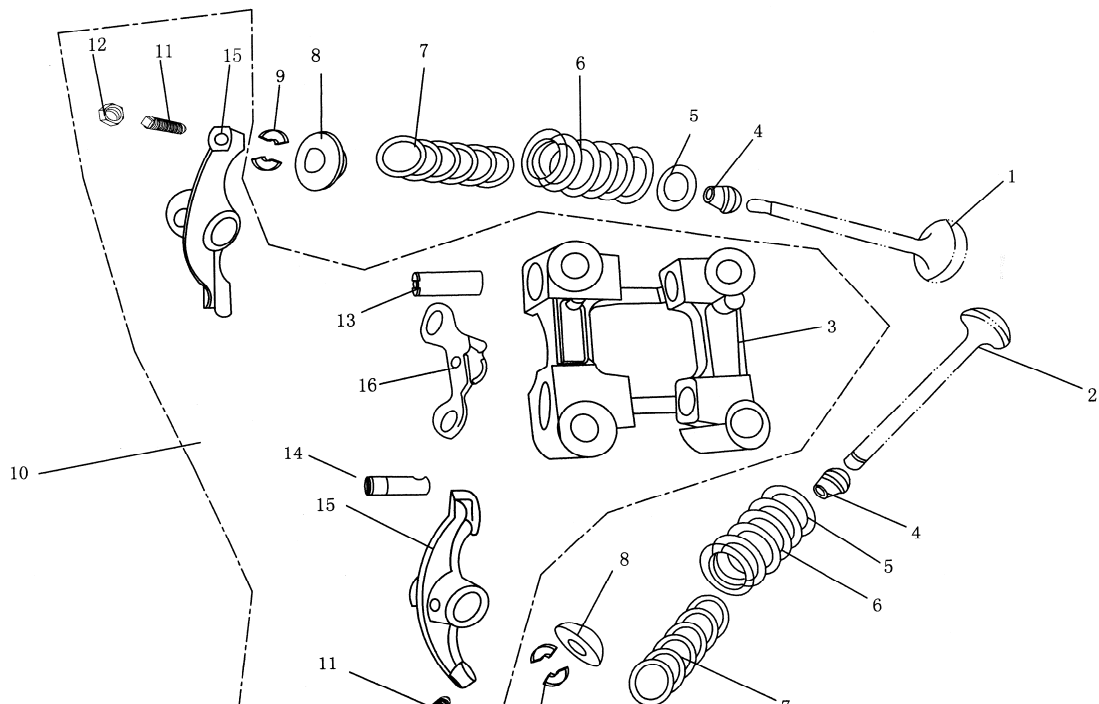


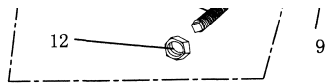


NO.	PART CODE	DESCRIPTION	QTY	NOTE
1	11100-GY57-0000	R.CRANKCASE BODY	1	
2	11102-GY57-0000	BUSH,ENGINE HANGER	2	
3	11203-GY57-0000	BUSH,LOWER SHOCK ABSORBER,RR	1	
4	11200-GY57-0000	L.CARKCASE BODY(LONGER)	1	
5	91301-GY57-0000	O-RING 7.5*1.5	1	
6	11392-GY57-0000	GASKET,CRANKCASE	1	
7	94301-08140-000	LOCATING DEWEL 8*14	2	
8	91255-GY57-0000	OIL SEAL 27*42*7	1	
9	91009-GY57-0000	BEARING 6004	1	
10	91003-GY57-0000	BEARING 6301	1	
11	96100-60020-000	BEARING 6002	1	
12	91202-GY57-0000	OIL SEAL 19.8*30*5	1	
13	90309-GY57-0000	LOCKNUT M8	1	
14	11204-GY57-0000	LOCATING DEWEL BRAKE BLOCK	1	
15	9052A-GY57-0000	OIL DRAIN BOLT(CHROE)	1	
16	90032-GY57-0000	STUD BOLT M8*195.5(COLOR)	2	
17	90031-GY57-0000	STUD BOLT M8*187.5(COLOR)	2	
18	96001-06050-000	FLANGE BOLT M6*50(WHITE)	2	
19	90521-GY57-0000	WASHER 12	1	

34

AIR MACHINE

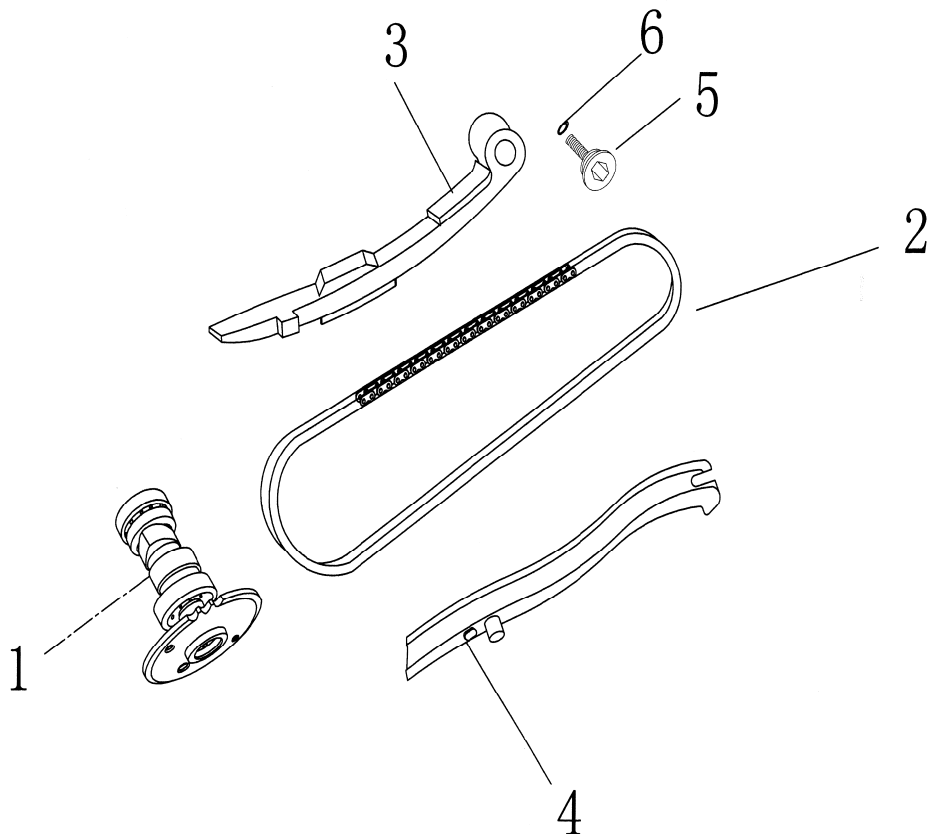




NO.	PART CODE	DESCRIPTION	QTY	NOTE
1	14711-GY57-0000	INLET VALVE	1	
2	14721-GY57-0000	EXHAUSE VALVE	1	
3	12211-GY57-0000	HOLDER OF ROCKER	1	
4	12209-GY57-0000	VALVE OIL SEAL	2	
5	14775-GY57-0000	VALVE SPRING SEAT	2	
6	14751-GY57-0000	VALVE OUTER SPRING	2	
7	14761-GY57-0000	VALVE INNER SPRING	2	
8	14771-GY57-0000	VALVE SPRING TRAY	2	
9	14781-GY57-0000	VALVE LOCK CLAMP	4	
10	1220A-GY57-0000	VALVE ROCKER SEAT ASSY.	2	
11	90012-GY57-0000	ADJUSTING SCREW, VALVE	2	
12	90206-GY57-0000	ADJUSTING LOCKNUT, VALVE	2	
13	14450-GY57-0000	ROCKER SHAFT, EXHAUST VALVE	1	
14	14452-GY57-0000	ROCKER SHAFT, INLET VALVE	1	
15	14431-GY57-0000	ROCKER	2	
16	14460-GY57-0000	DECOMPRESSION LOCK PLATE COMP.	1	

35

TIMING CHAIN, TENSIONER

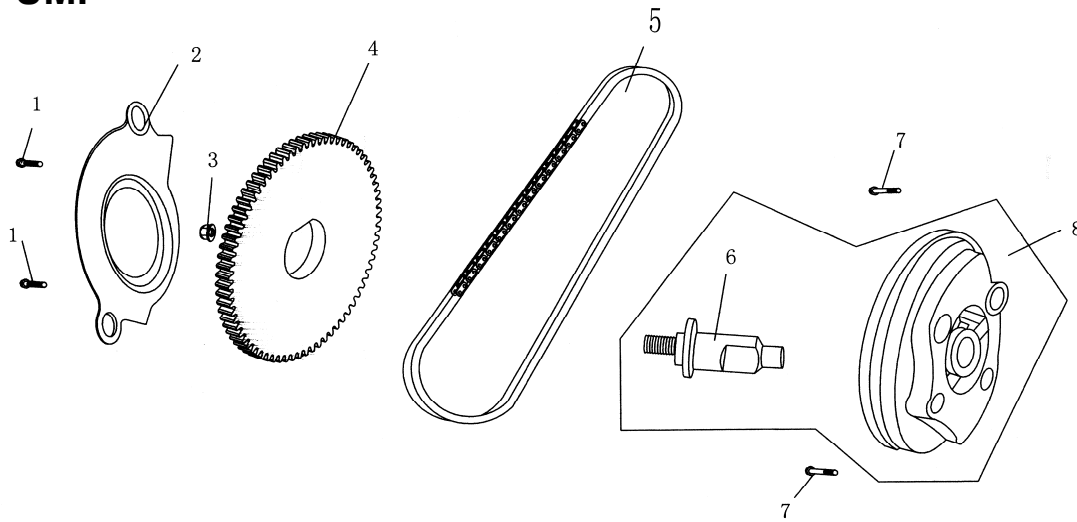


NO.	PART CODE	DESCRIPTION	QTY	NOTE
-----	-----------	-------------	-----	------

1	14100-GY57-0000	CAM GEAR COMP.	1	
2	14401-GY57-0000	TIMING CHAIN	1	
3	14510-GY57-0000	CHAIN TENSION STUD	1	
4	14610-GY57-0000	CHAIN GUIDED ROD	1	
5	14531-GY57-0000	SCERW,CHAIN TENSION STUD(WITH O-RING)	1	
6	90308-GY57-0000	O-SEAL 15*1.5	1	

36

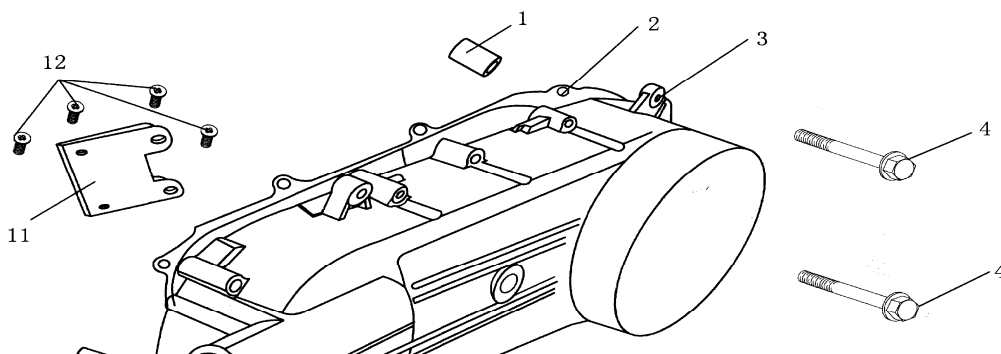
OIL PUMP

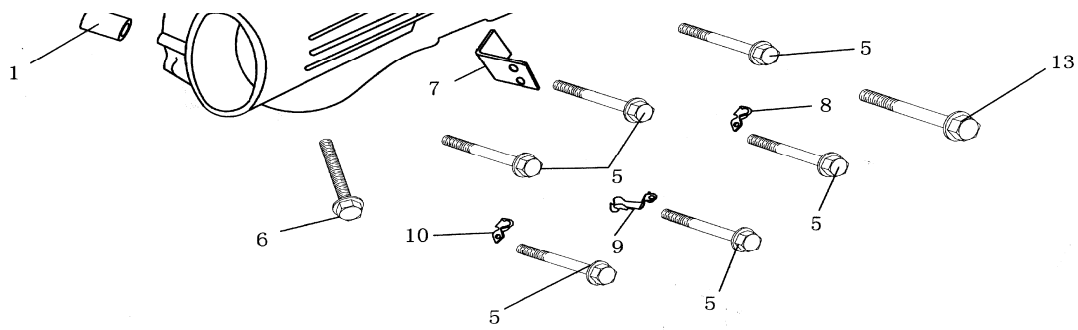


NO.	PART CODE	DESCRIPTION	QTY	NOTE
1	96001-06012-080	FLANGE BOLT M6*12	2	
2	15711-GY57-0000	OIL DIVISION PLATE	1	
3	94050-06080-000	FLANGE BOLT M6(WHITE)	1	
4	15133-GY57-0000	DRIVING GEAR,OIL PUMP	1	
5	15141-GY57-0000	DRIVING CHAIN,OIL PUMP	1	
6	15101-GY57-0000	OIL PUMP SHAFT	1	
7	96001-06025-080	FLANGE BOLT M6*25(WHITE)	2	
8	15100-GY57-0000	OIL PUMP ASSY	1	

37

LEFT COVER

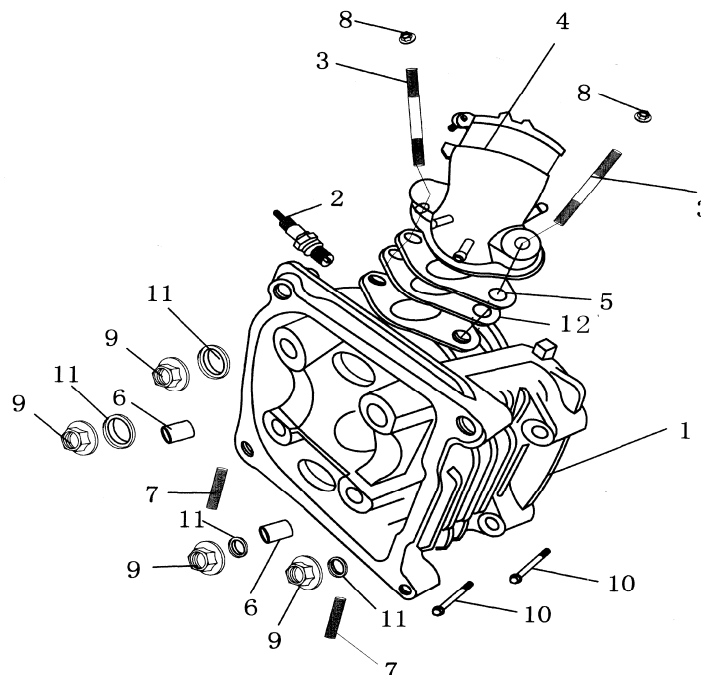




NO.	PART CODE	DESCRIPTION	QTY	NOTE
1	94301-08140-000	LOCATING DEWEL 8*14	2	
2	11395-GY57-0000	GASKET,L.CRANKCASE	1	
3	11341-GY57-0000	L.CRANKCASE COVER(BLACK)	1	
4	96001-06065-080	FLANGE BOLT M6*65(CHROME)	2	
5	96001-06040-080	FLANGE BOLT M6*40(CHROME)	7	
6	96001-06012-080	FLANGE BOLT M6*12	1	
7	11382-GY57-0000	MAIN STAND PLATE	1	
8	11384-GY57-0000	BRAKE CABLE CLAMP	1	
9	11385-GY57-0000	THROTTLE CABLE CLAMP	1	
10	11381-GY57-0000	CLAMP	1	
11	11386-GY57-0000	VENT GUIDE BOARD	1	
12	11387-GY57-0000	TAPPING SCREW M4*8(COLOR)	4	

38

CYLINDER HEAD

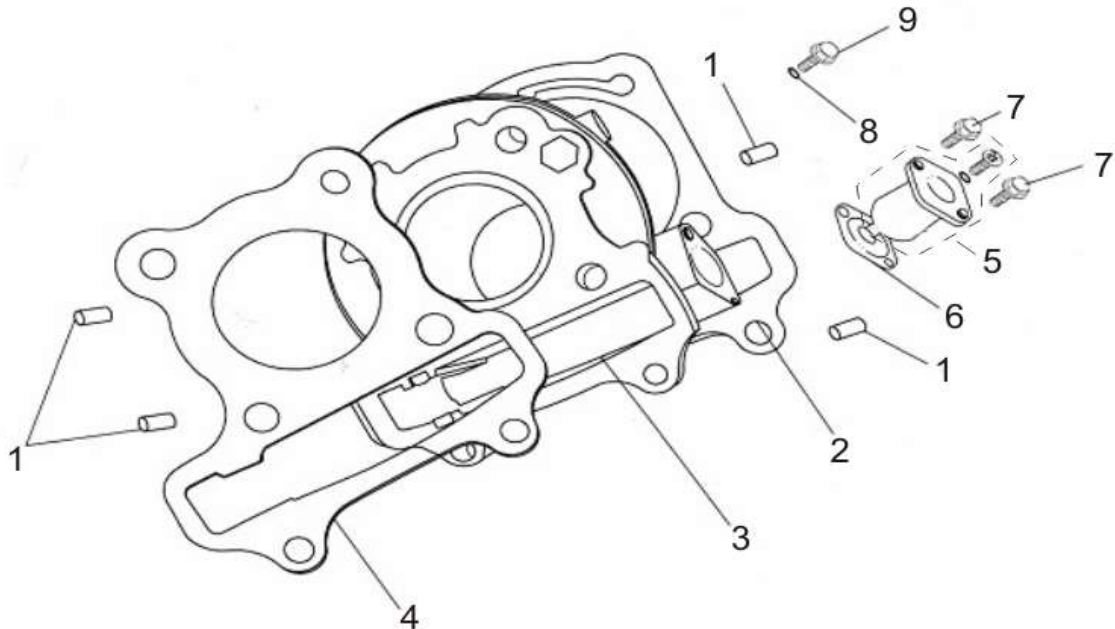


NO.	PART CODE	DESCRIPTION	QTY	NOTE
1	12200-GY57-0001	CYLINDER HEAD COMP.	1	
2	98056-GY57-0000	SPARK PLUG	1	
3	90033-GY57-0001	STUD BOLT M6*53	2	

4	17110-GY57-0000	INLET PIPE	1	
5	16211-GY57-0000	INSULATING BOARD	1	
6	94301-10160-000	LOCATING DEWEL 10*16	2	
7	92900-GY57-0000	STUD BOLT M6*32	2	
8	94050-06080-000	FLANGE BOLT M6	2	
9	94050-08080-000	FLANGE BOLT M8	4	
10	96001-06100-080	FLANGE BOLT M6*100	2	
11	90465-GY57-0000	WASHER 8(COLOR)	4	
12	16201-GY57-0000	SHIM,INSULATING BOARD	1	

39

CYLINDER



NO.	PART CODE	DESCRIPTION	QTY	NOTE
1	94301-10160-000	LOCATING DEWEL 10*16	4	
2	12191-GY57-0000	GASKET,CYLINDER	1	
3	12100-GY57-0000	CYLINDER BODY	1	
4	12251-GY57-000	GASKET,CYLINDER HEAD	1	
5	14520-GY57-0000	CHAIN ADJUSTOR ASSY	1	
6	14523-GY57-0000	GASKET,CHAIN ADJUSTOR	1	
7	96001-06025-000	FLANGE BOLT M6*25(CHROME)	2	
8	12102-GY57-0000	GASKET 6	1	
9	96001-06014-000	FLANGE BOLT M6*14(WHITE)	1	

40