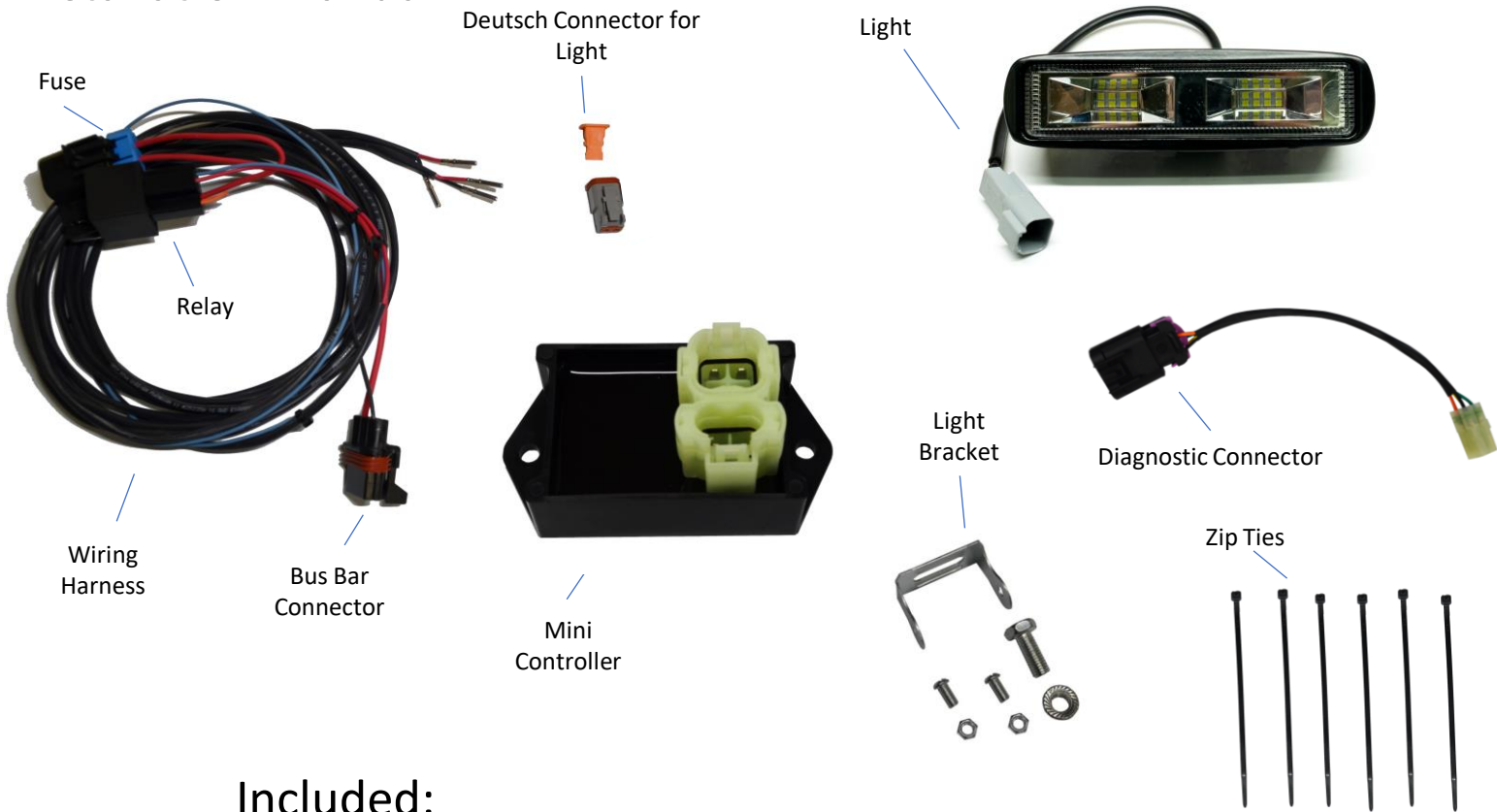


# Polaris Xpedition Reverse Light Kit

## Installation Manual



### Included:

Description	Quantity
Wiring harness	1
Relay	1
Lights	1
Zip Ties	6
Christmas Tree Zip Ties	3
Deutsch Connectors	1

### Required Tools:

Torx Bit Set
Metric Wrench Set
Flat Screwdriver (push rivets)
Wire Cutter (trimming zip ties)
Philips Screwdriver
Utility Knife

Read entire manual before beginning the installation process.

Disclaimer: Sam's Backup Lights is not responsible for any damage due to improper installation.

## Step 1: Remove Seat, Hood, and Grill

- 1) Remove two screws from the front of the driver's seat and tilt seat backward to remove; this will make installation easier.
- 2) Loosen grill by turning the locks one-quarter turn.
- 3) Lift to remove grill.
- 4) Remove hood straps and lift to remove hood.

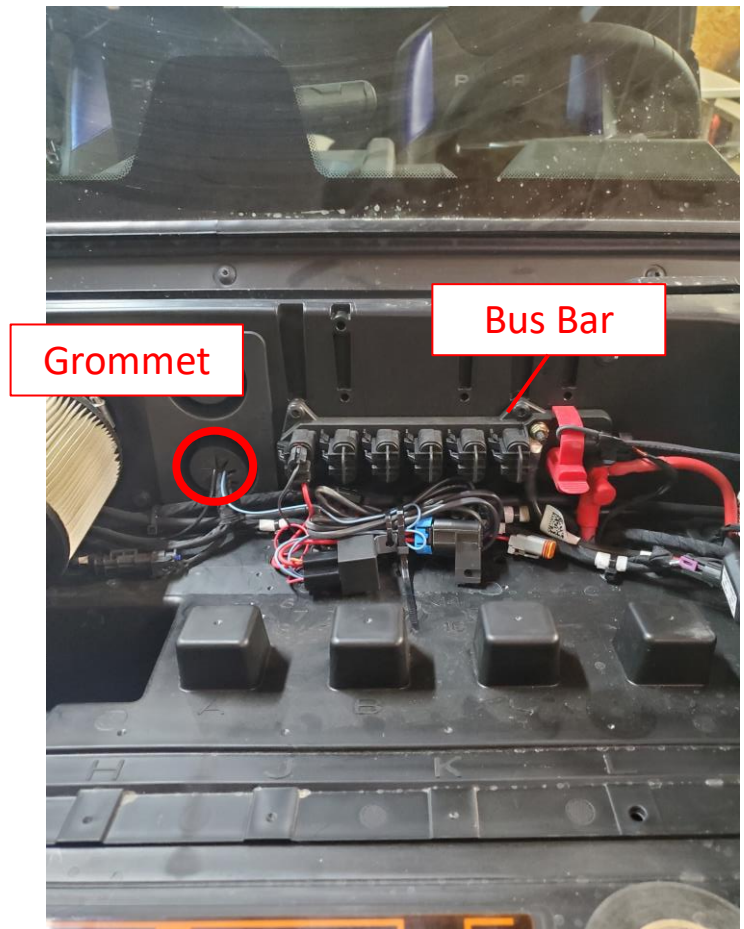


## Step 2: Remove Optional Plastics

- 1) If applicable, remove any plastics under dash to access the diagnostic connector and OEM wiring harness.

## Step 3: Install Controller, Relay, and Fuse

- 1) Plug supplied diagnostic connector into mini-controller and factory diagnostic connector. Located under the dash on the drivers-side under the steering wheel
- 2) Zip tie to OEM wiring harness.
- 3) Using the factory holes, zip tie relay, fuse, and related wires using supplied Christmas tree zip ties.
- 5) Plug bus bar connector on harness into bus bar.
- 6) Feed the Light Blue wire thru the grommet to underside of dash and connect into the mini-controller



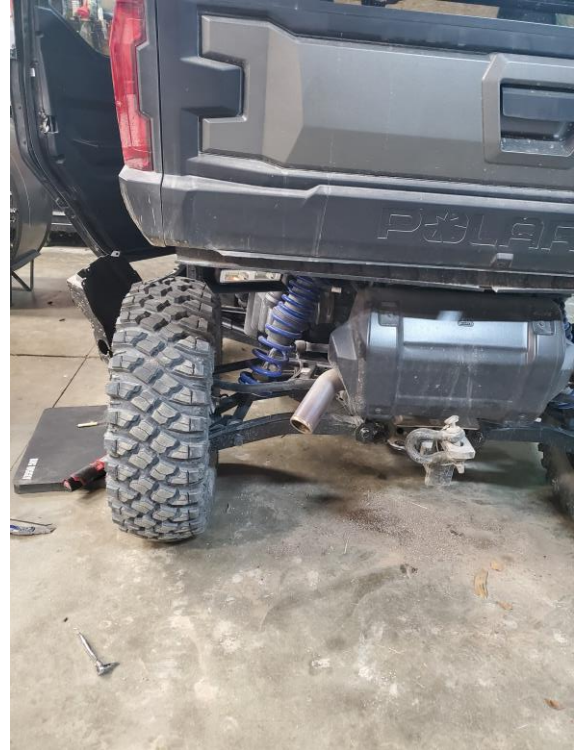
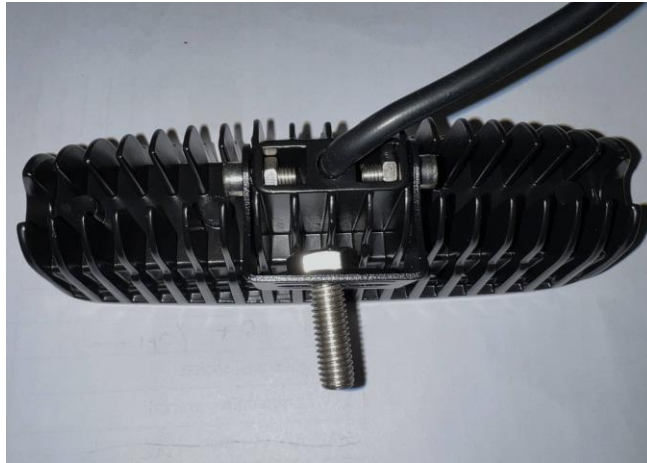
## Step 4: Remove Side Plastic

1) Remove the screws and push rivets holding the side plastics on.



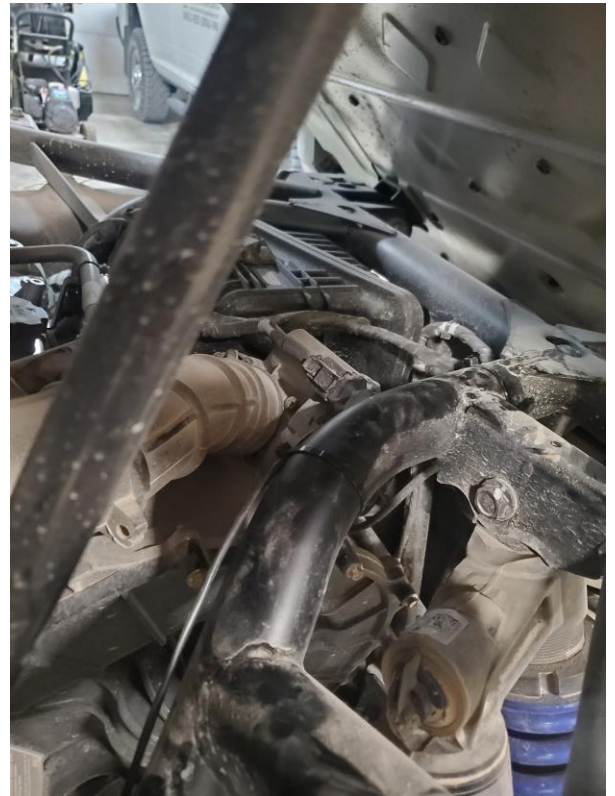
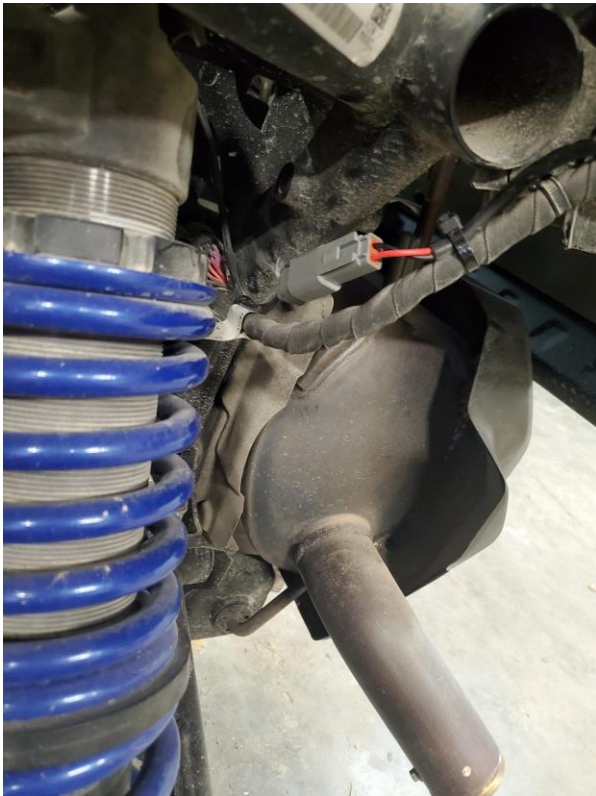
## Step 5: Mount Light

- 1) Attach the light to its bracket. Be sure to slide the bolt through the bracket before bracket is attached to light.
- 2) Depending on model and options mounting location will change.



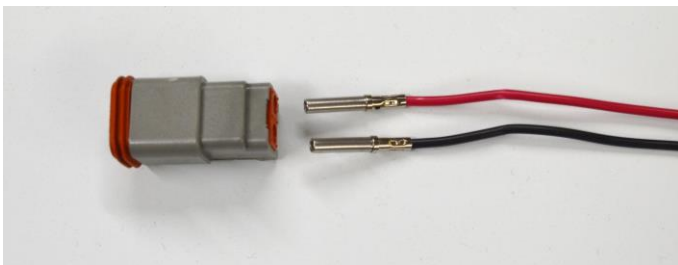
## Step 6: Run Wire To Light

- 1) Run harness from battery to the LED Light.
- 2) Follow the factory wiring harness and secure the light wiring keeping away from heat and moving parts.

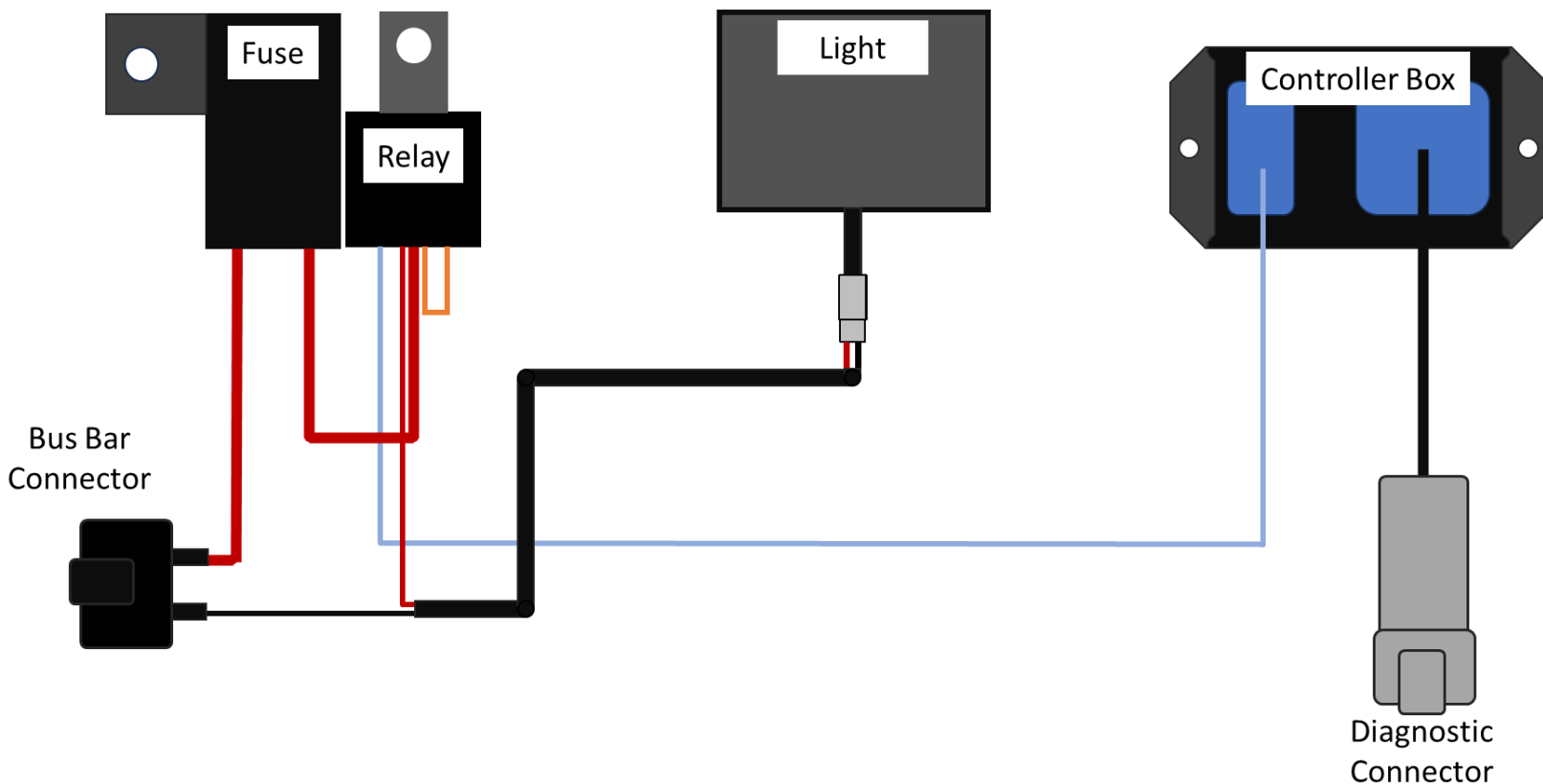


# Step 7: Assemble Connectors

- 1) Assemble the connector by pushing the red wire into the hole marked 1 and the black into hole 2. Push the wires in until they click into place and lock into the connector. Then push the cap onto the top.
- 2) Plug the connector into the light and secure the wire using zip ties.



## Automatic Reverse Light





## Operation of Reverse Lights

Our controllers have been programmed with a manual override feature. Back-up lights may be turned on without the vehicle in reverse.

- **Fully Automatic when shifted to Reverse Gear**

- 1) No programming required

- **Manual Override Function**

- 1) Shift the vehicle into Neutral

- 2) Press and hold the brake pedal for up to 2 seconds. The reverse light will automatically turn on and stay on.

**\*To turn the light off repeat this procedure.**

**Note:** If the ignition is turned off while the vehicle is in reverse, or the manual override function is enabled the lights will remain ON until the ECU enters sleep mode (approximately 30 secs to 2 minutes depending on vehicle and ECU type).