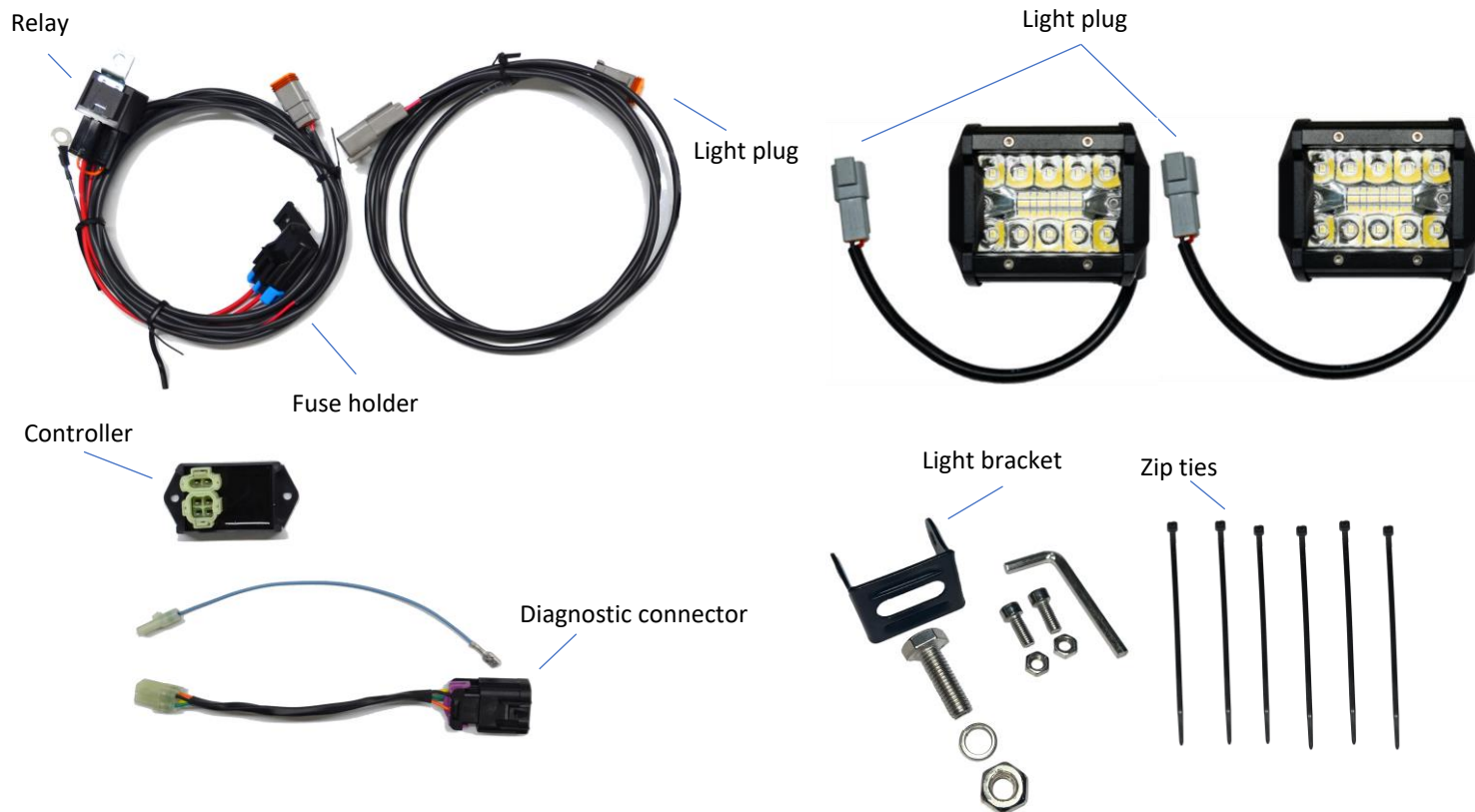


Polaris 2024+ RZR Two Light Reverse Light Kit Installation Manual



Included:

Description	Quantity
Wiring Harness	1
Relay	1
Light	1
Zip Ties (Medium)	4
Zip Ties (Large)	4

Required Tools:

Torx T-30
5/16" Allen Wrench
Philips Screwdriver
Utility Knife
3/8" Socket

Read the entire manual before beginning the installation process.

Disclaimer: Sam's Backup Lights is not responsible for any damage due to improper installation.

Step 1: Remove Seats & Shifter

- 1) Remove seats by pulling up on the red release at the rear of the seat.
- 2) Remove the shifter top by removing the T-25 screw and removing the cover.
- 3) Remove the T-25 screw uncovered by the cover. Pull up to remove the shifter.



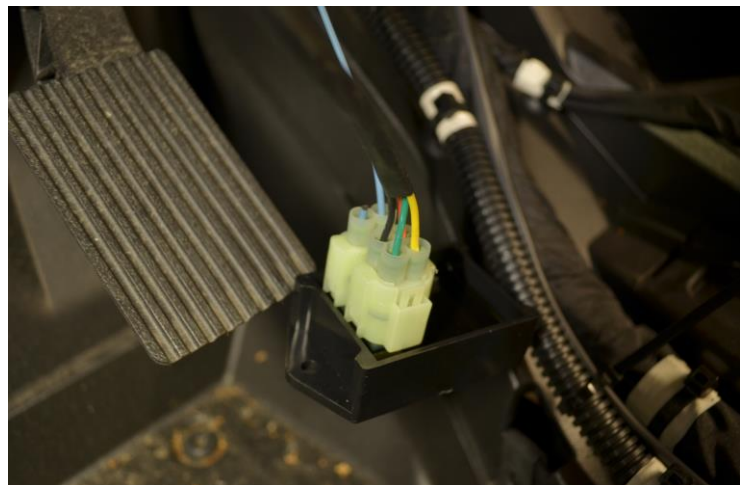
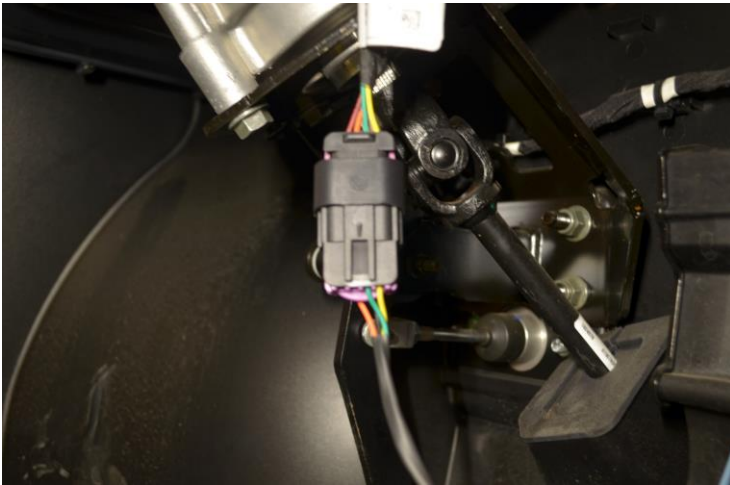
Step 2: Remove Center Console

- 1) Remove the front center console by removing 7 T-40 screws and the three push-rivets. Remove the center console.
- 2) To remove the rear cup holders, unscrew the 4 T-40 screws and remove the three push rivets. (Watch out for the wires for the 12V Plug). Note: this is only for a 4-seater
- 3) Remove the rear cover by turning the four push locks and pulling on the cover.



Step 2: Secure & Plug in Controller

- 1) Remove the diagnostic connector cover and plug in the connector included with the reverse light wiring harness.
- 2) Secure controller, relay, and fuse using zip-ties.
- 3) Remove the cover for the bus bar and plug in the power and ground.
- 4) Plug in the control box.



Step 3: Mounting the Light

- 1) Mount the two included bar clamps to each side of the roll cage, using a 5/32" allen wrench to tighten the bolts.
- 2) Attach lights to their brackets. Be sure to slide the bolt through the bracket before attaching to the light. Use 5/32" allen wrench to tighten allen bolts.
- 3) Bolt lights to the bar clamps. Tighten bolts with 1/2" wrench.



Step 4: Route Power to Light

- 1) Route reverse light harness down from the control box position into the cab, and, following the OEM harness, run straight through cab.
- 2) route the wiring harness up the roll bar to the lights.
- 3) Plug wiring harness connector into light connector.
- 4) Zip tie as needed.

Note: If installing kit on 2-seater, coil excess wire either by control box or directly behind seat.

Step 5: Reinstall Plastics





Operation of Reverse Lights

Our controllers have been programmed with a manual override feature. Back-up lights may be turned on without the vehicle in reverse.

- **Fully Automatic when shifted to Reverse Gear**

- 1) No programming required

- **Manual Override Function**

- 1) Shift the vehicle into Neutral
- 2) Press and hold the brake pedal for up to 2 seconds. The reverse light will automatically turn on and stay on.

***To turn the light off repeat this procedure.**

Note: If the ignition is turned off while the vehicle is in reverse, or the manual override function is enabled the lights will remain ON until the ECU enters sleep mode (approximately 30 secs to 2 minutes depending on vehicle and ECU type).