



**Safety Step**  
CANADA

**ARCHITECTURAL STAIR NOSINGS**

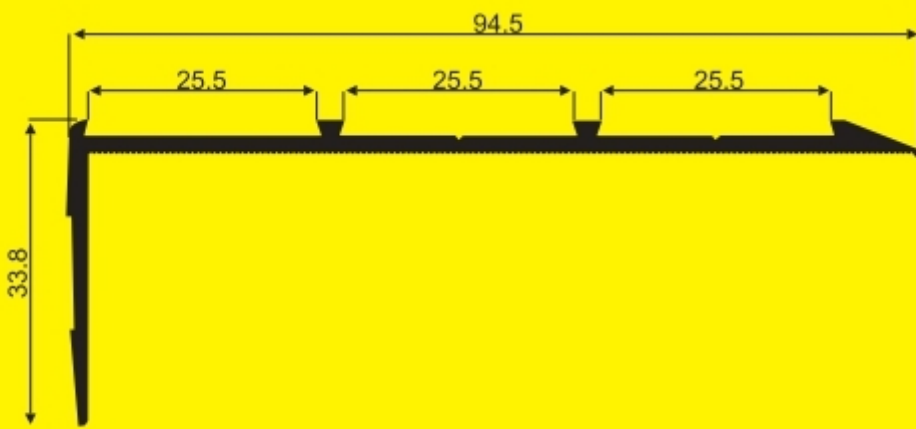
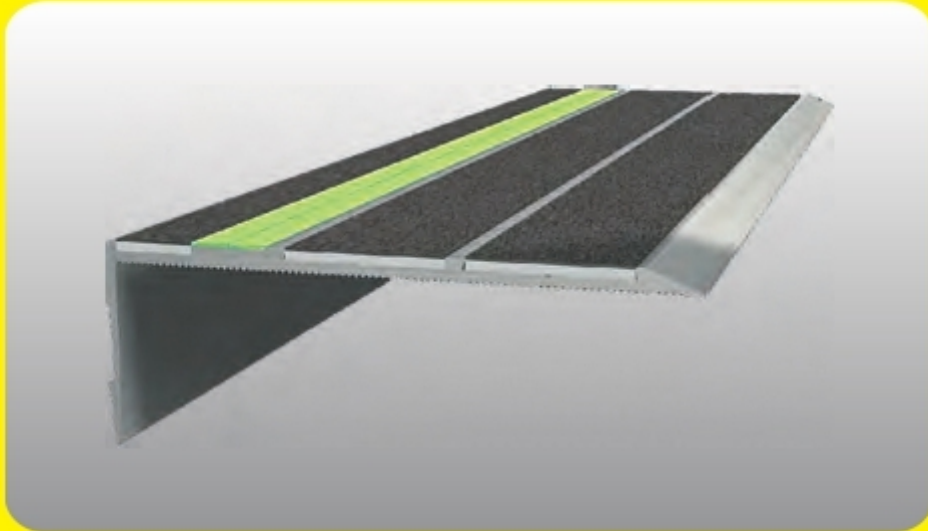
- ▲ Integrate reliable non-slip surfacing with luminescent escape routing
- ▲ Super high performance capability to integrate with emergency escape systems
- ▲ Performance exceeds all anti-slip standards for stairs
- ▲ Versatile mix and match colour variations available
- ▲ Practical, universal-fitting profiles for both new and retrofit applications

[www.safetystep.ca](http://www.safetystep.ca)

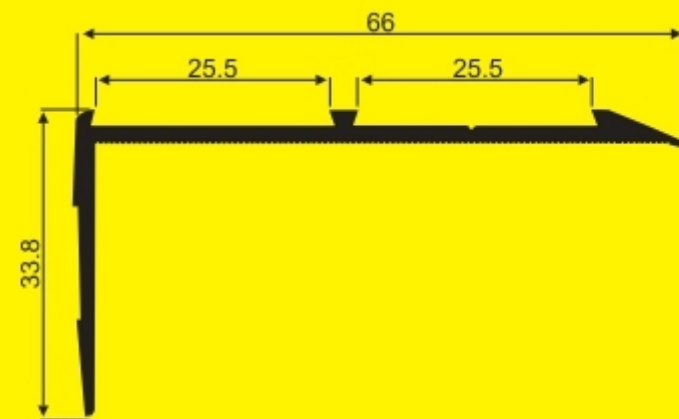
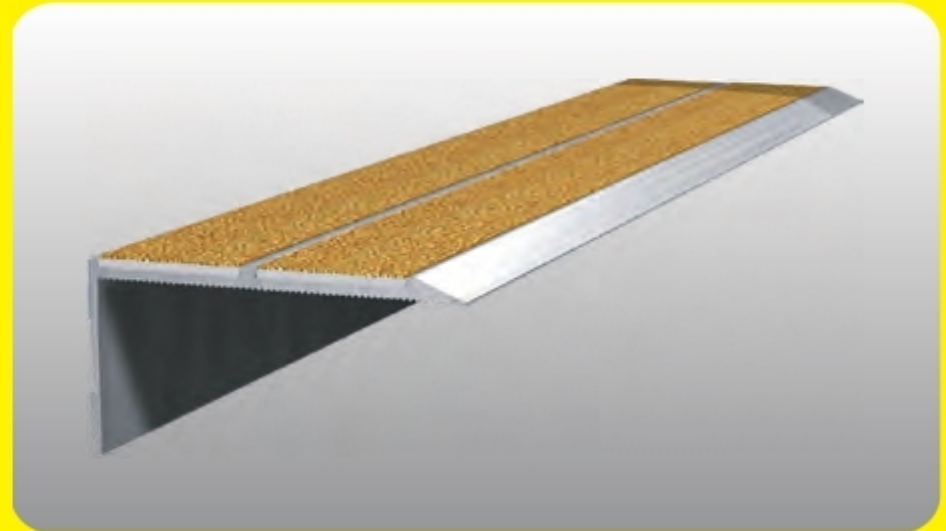
Truro, NS

[info@safetystep.ca](mailto:info@safetystep.ca)

**EDGE DEFINING - NON SLIP - GLOW IN THE DARK**



**DESIGN**



**DETAILS**

**PRODUCT CODE** ALN3

**APPLICATION** GENERAL USAGE  
ASMAT INSERTS & GLOWSTRIP  
CAPABLE (FRONT & TOP)

**BASE MATERIAL** 6060 T5 ALUMINIUM - ANODISED

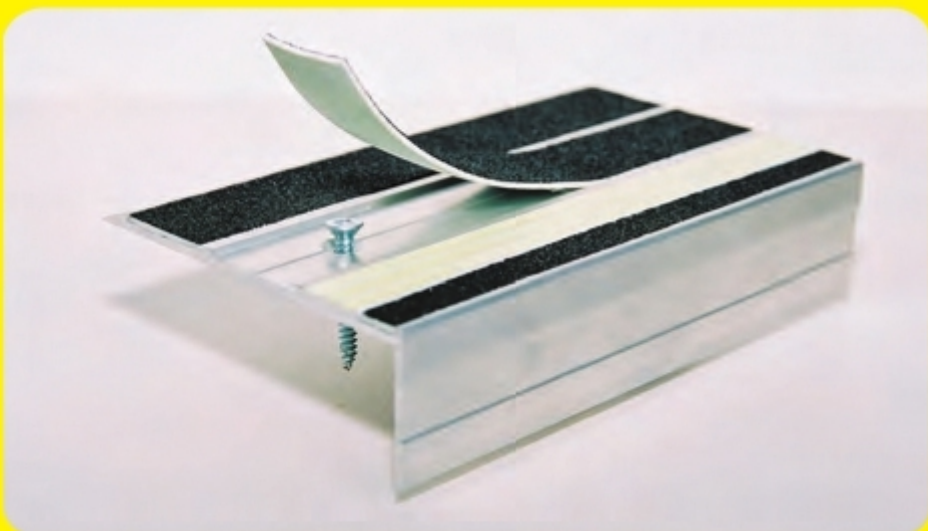
**MAXIMUM LENGTHS** EXTRUSION 5.0M/FRICTION INSERTS 2.4M  
GLOWSTRIPS 3M

**PRODUCT CODE** ALN2

**APPLICATION** GENERAL USAGE  
ASMAT INSERTS & GLOWSTRIP  
CAPABLE (FRONT & TOP)

**BASE MATERIAL** 6060 T5 ALUMINIUM - ANODISED

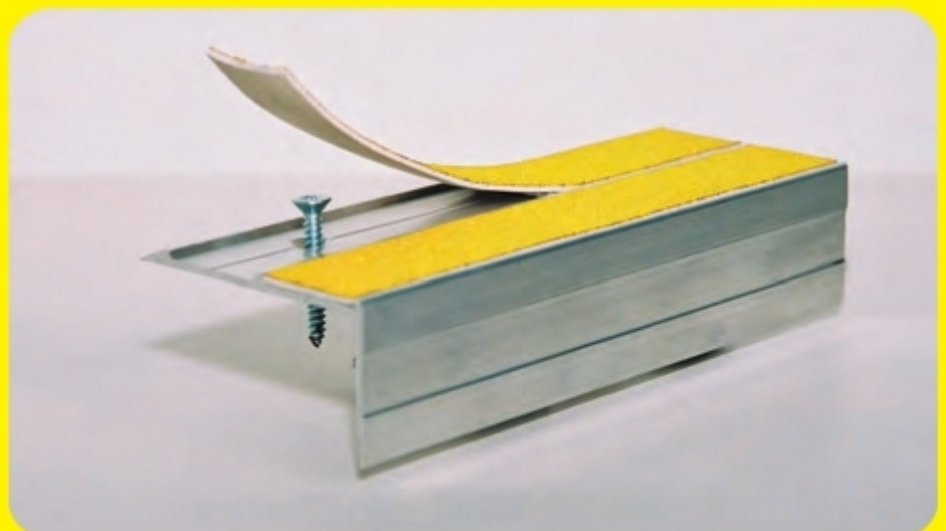
**MAXIMUM LENGTHS** EXTRUSION 5.0M/FRICTION INSERTS 2.4M  
GLOWSTRIPS 3M



**FIXING**

**SCREW FIXING** 8G x 25 (1") C/SUNK

**NYLON PLUG FOR CONCRETE** 5 X 25 (1")



**SCREW FIXING** 8G x 25 (1") C/SUNK

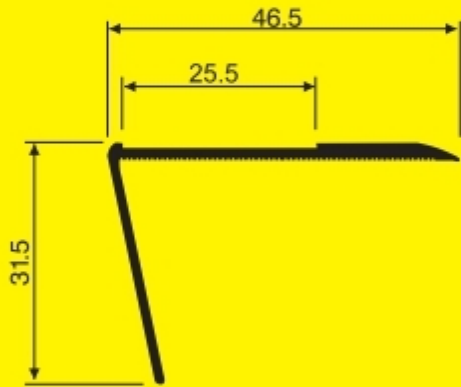
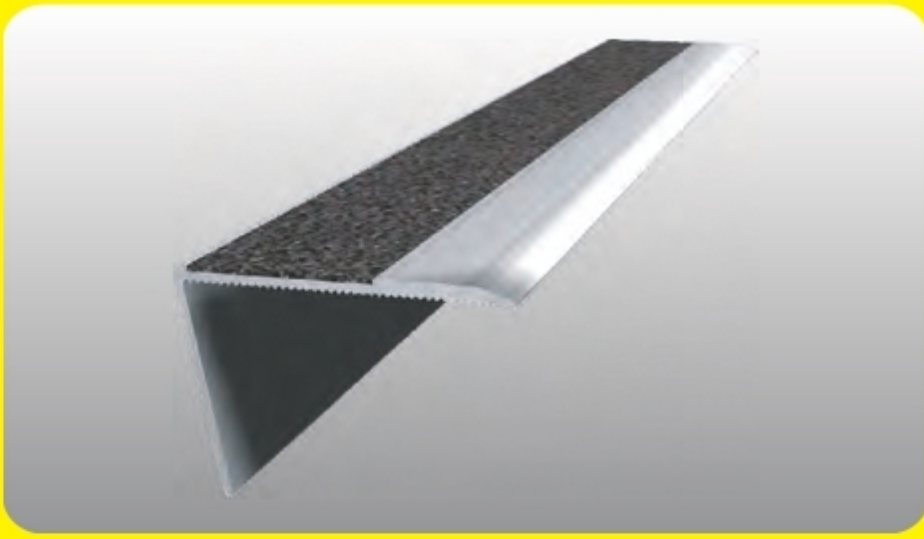
**NYLON PLUG FOR CONCRETE** 5 X 25 (1")

[www.safetystep.ca](http://www.safetystep.ca)

Truro, NS

[info@safetystep.ca](mailto:info@safetystep.ca)





**PRODUCT CODE** ALN1

**APPLICATION** EMERGENCY AND SERVICE STAIRS  
GRIP TAPE INSERTS - NOT GLOWSTRIP CAPABLE

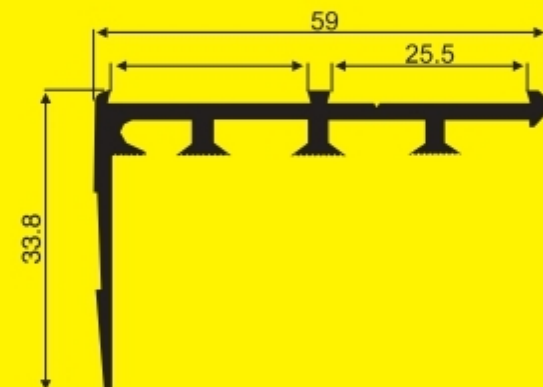
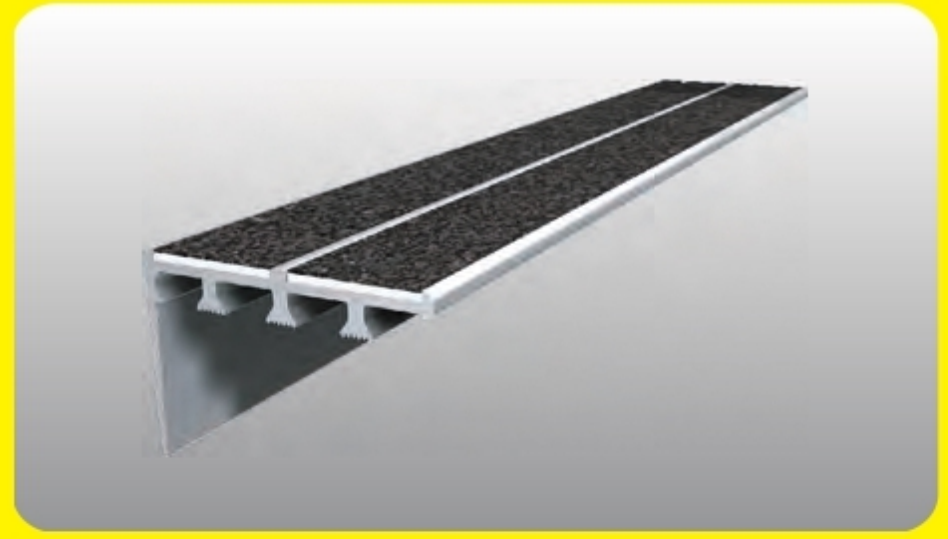
**BASE MATERIAL** 6060 T5 ALUMINIUM - MILL FINISH

**MAXIMUM LENGTHS** EXTRUSION 5.0M/INSERTS 1.8M



**ADHESIVE FIXING** URETHANE CARTRIDGE ADHESIVE/SEALANT

**DESIGN**



**PRODUCT CODE** ALNCP

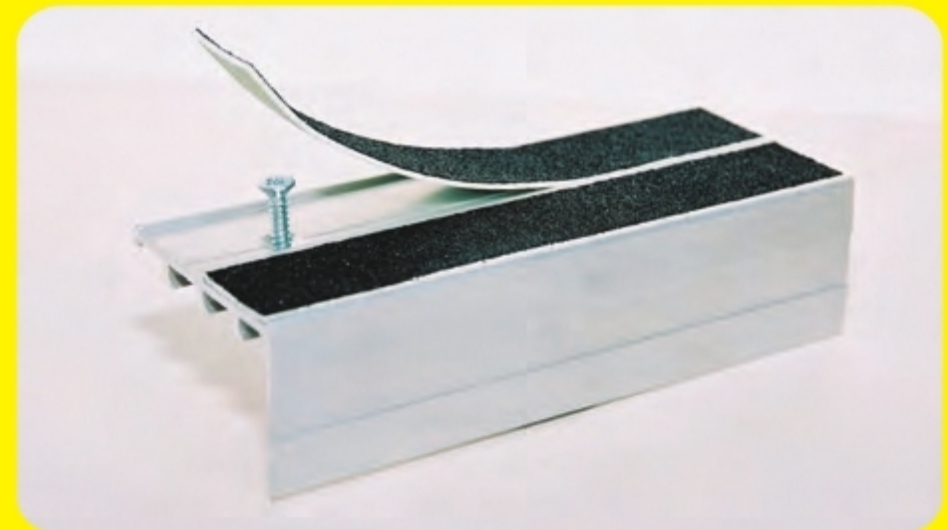
**APPLICATION** CARPET NOSING  
ASMAT INSERTS & GLOWSTRIP  
CAPABLE (FRONT & TOP)

**BASE MATERIAL** 6060 T5 ALUMINIUM - ANODISED

**MAXIMUM LENGTHS** EXTRUSION 5.0M/FRICTION INSERTS 2.4M

**DETAILS**

**FIXING**



**SCREW FIXING** 8G x 25 (1") C/SUNK

**NYLON PLUG FOR CONCRETE** 5 X 25 (1")



▲ GLOWSTRIP is a super high performance, self charging photoluminescent material set into a fine aluminium extrusion. In darkness or in times of emergency each stair nosing will glow brightly and clearly define the path to safety. No electrical connections required. 100% reliable performance. Hours of reliable luminance. Place one or more Architectural Stair Nosings in any of the rebates of the Architectural Nosings together with the non-slip ASMAT inserts.

▲ ASMAT anti-slip inserts are highly non-slip and extremely durable. This exclusive material is formed from permanently bonding diamond hard abrasive to a stable PVC base material that then inlays into the body of the ARCHITECTURAL NOSING.

▲ ASMAT exceeds all relevant standards with an extremely high coefficient of friction of 1.10. Colour range is available with custom colouring on request.