

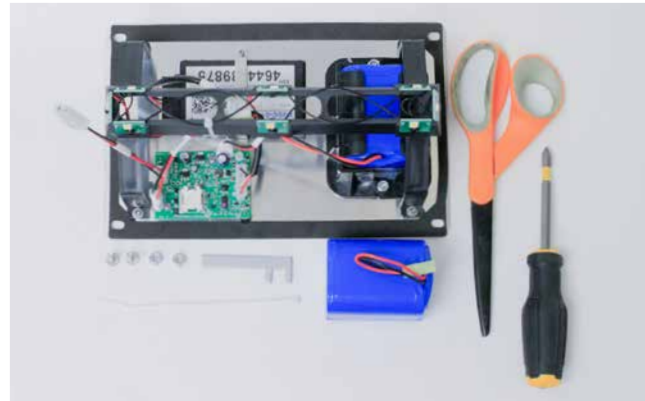
Sign Battery Replacement

Provided Materials:

- Battery
- (2) Bolts
- (2) Nuts
- Wrench
- Zip tie

Tools Required:

- Phillipshead Screwdriver
- Scissors

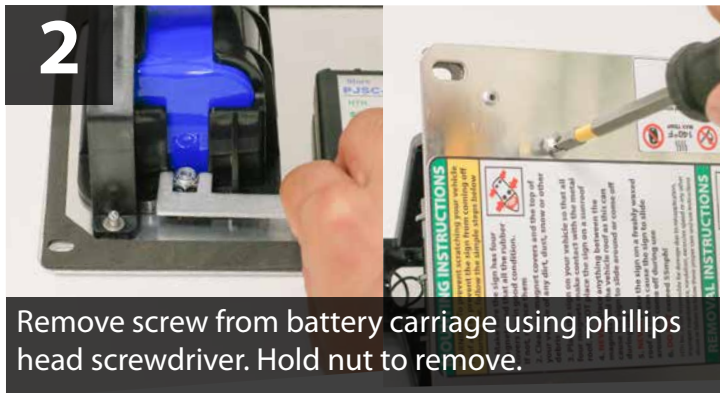


Before you begin:

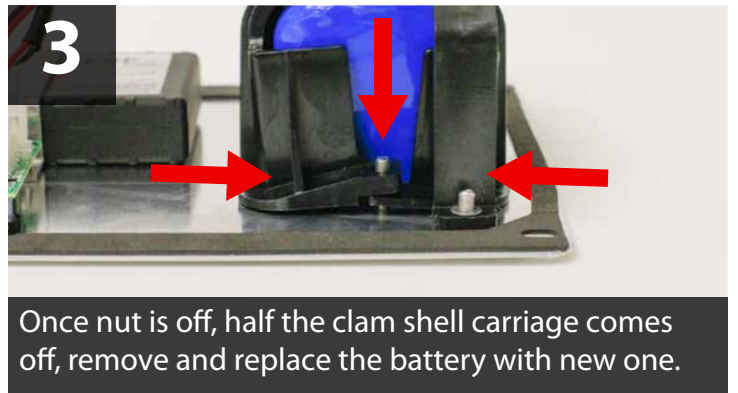
Make sure you're working in a clean dry environment



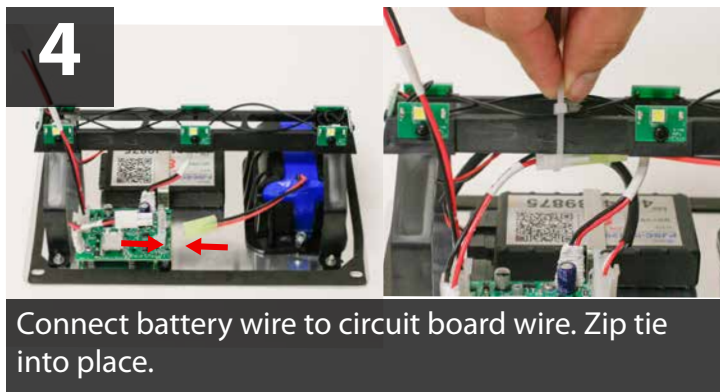
Cut existing zip ties and unplug old battery.



Remove screw from battery carriage using phillips head screwdriver. Hold nut to remove.



Once nut is off, half the clam shell carriage comes off, remove and replace the battery with new one.



Connect battery wire to circuit board wire. Zip tie into place.



Plug the whole lightsystem back to sign's pigtail that's inside the sign and replace the metal plate.