

*Super 808*

**Super808**

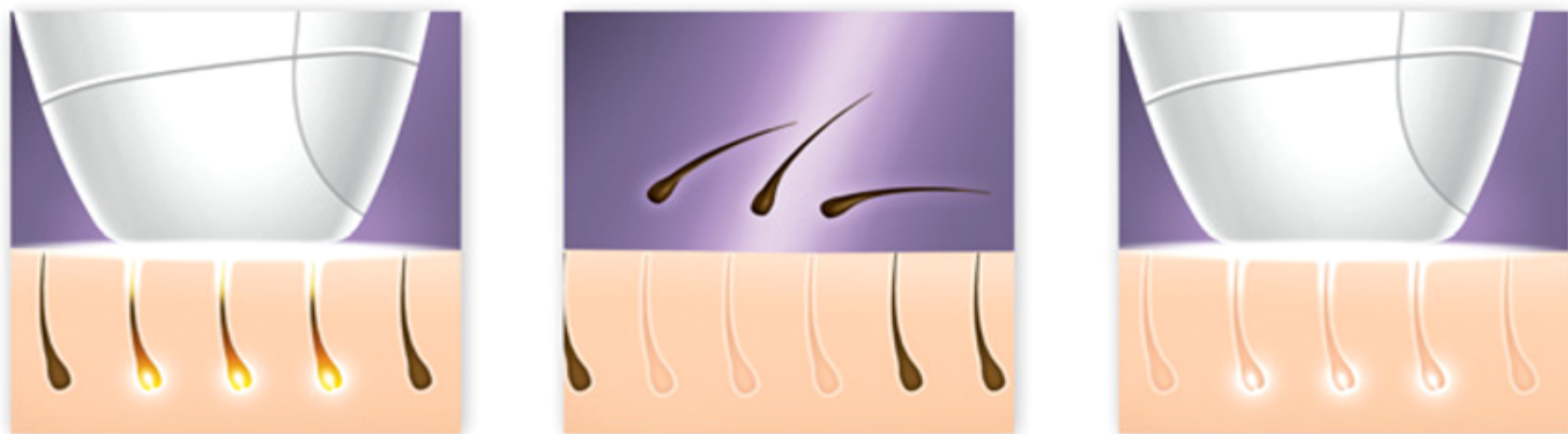
# Diode Laser Hair Removal Machine



## Super808



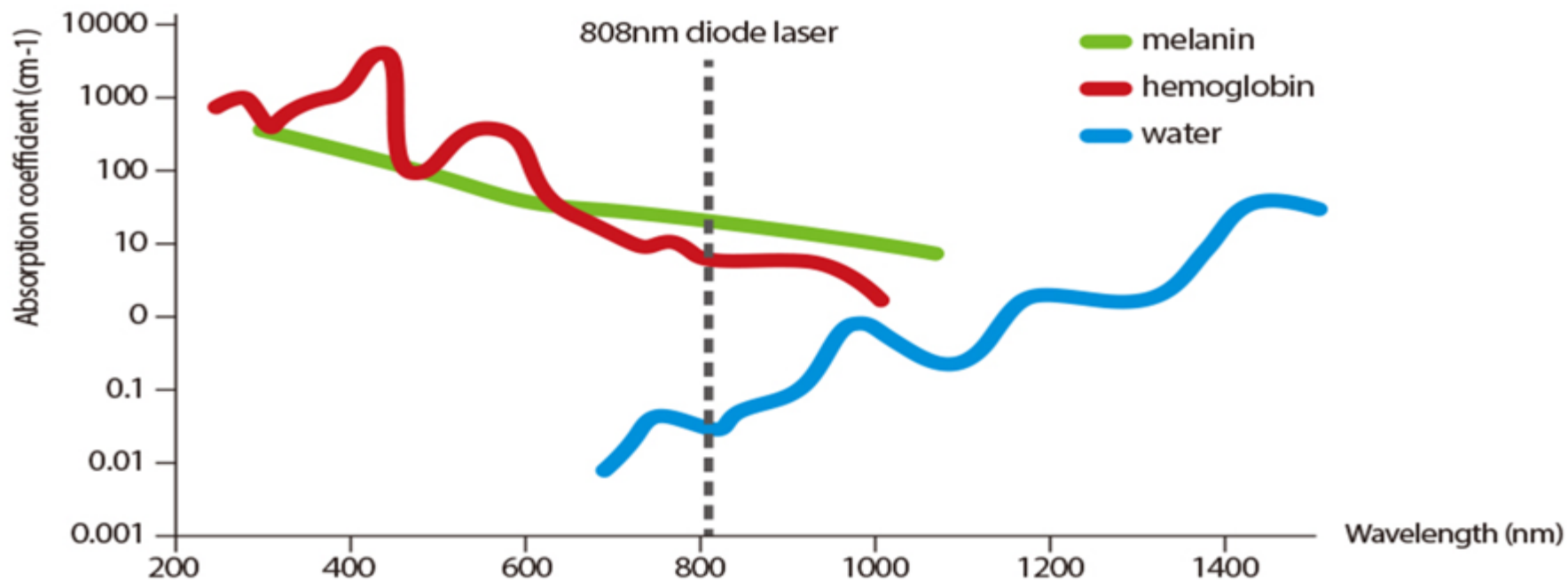
## Working Principle



The principle of selective photothermal action is irradiating a certain intensity of 808NM laser to the hair follicles. After the laser irradiation, the hair follicle stem cells are destroyed, and the hair follicles no longer grow hair or grow thin and soft villi, thereby achieving the purpose of hair removal. It also has the effect of skin rejuvenation while removing hair.

## Super808 Hair Removal Gold Standard

808NM Laser focus on **Penetration depth** and **absorption coefficient of melanin**





## Treatment Range

- Permanent hair removal
- Skin firming

(Underarm, forehead, chin, beard, chest, back, legs, arms, bikini etc.)



Lip hair



Underarm



Chest hair



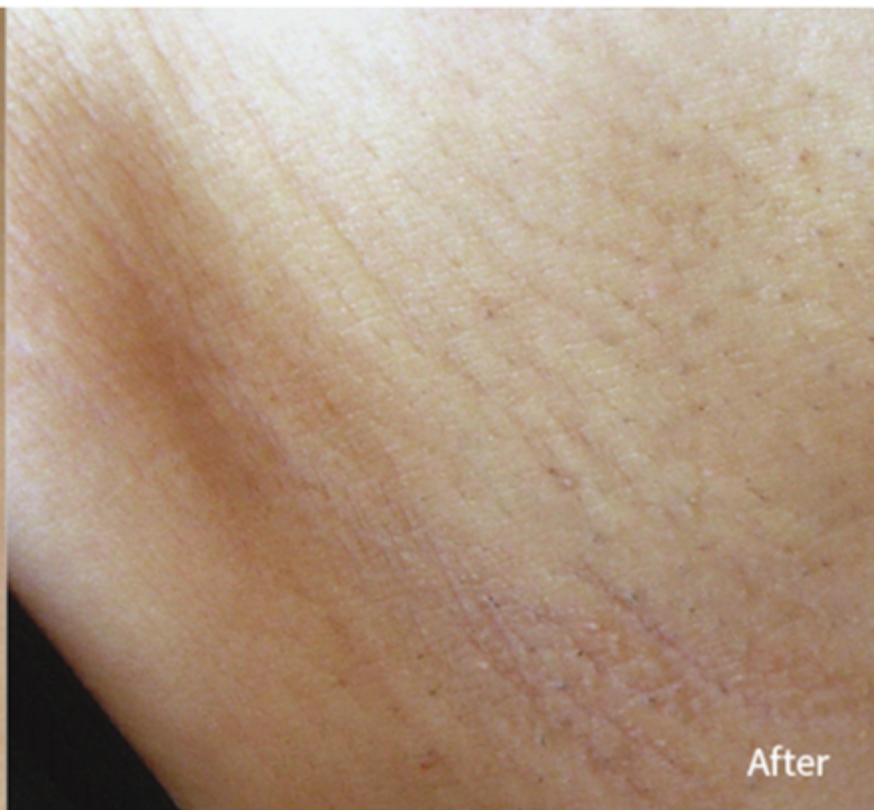
Leg hair



Bikini



## Before & After Photos









## Technical Parameters



Laser Type: Semiconductor Laser

Model: Super808

Handpiece pipe length: 1.8M

Wavelength: 808nm

Handpiece weight: 1.2KG

Spot area: 10 × 12mm

Energy density: 20-120J / cm<sup>2</sup>

Pulse frequency: 1-10Hz

Laser power: 600W

Pulse width: 30-400ms

Voltage: 220 / 110V 50 / 60Hz

Screen size: 12.4 inch

Machine size: 100\*42\*48cm

Package Weight: 72KG

Package size: 56 × 55 × 126cm

Machine Net Weight: 49KG

## Laser Handle



### High power handle

Ultra-high power laser and short pulse width greatly improve comfort and treatment effect, ensuring faster, more comfortable and more effective hair removal.

### Coherent laser

Imported coherent laser, effectively guarantee the service life.

America imported laser stack, high energy, and longer lifespan



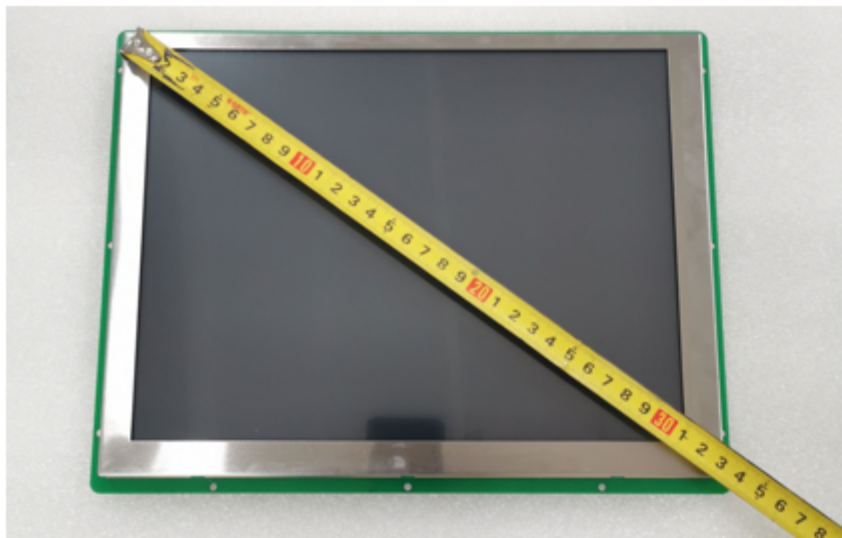


## Handle Connector



The hand piece connector is newest alma laser self-locking type, which can prevent the hand piece from falling down and leaking water. If there is looseness, the indicator light will be on.

## Operation Screen



Divene screen

The 12.4-inch Devine ultra-large luxury touch screen is anti-UV glare, stable and reliable.



## Filters

### PP filter

The first stage uses PP cotton

Filter out impurities to prevent corrosion.



### Ion filter

The second stage uses special Ion filter to filter out metal ions, avoid internal laser corrosion and extend system life.



## Cooling System

### Water tank

5L capacity,  
One piece Safe  
and durable

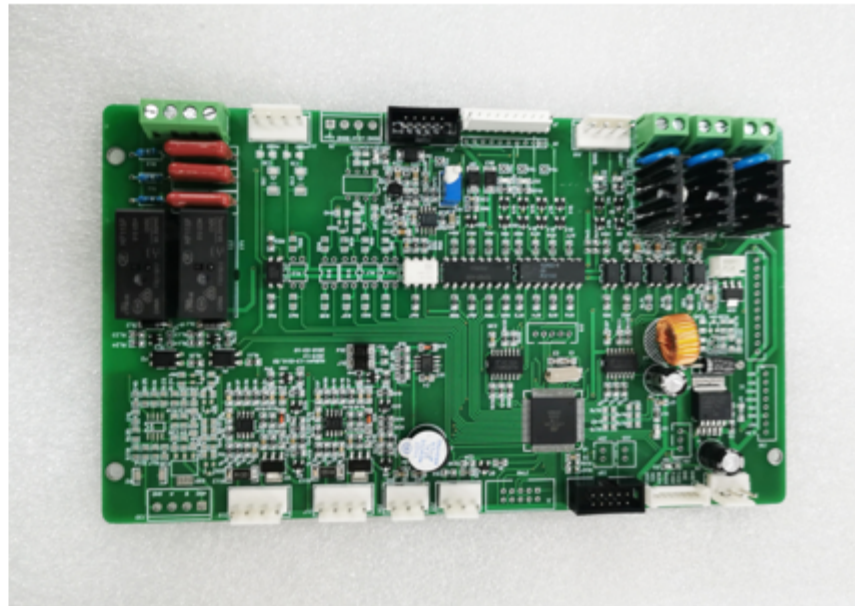


### Water pump

Stable performance  
Low noise  
long life



## TEC Cooling & Control Board



**cryogen**

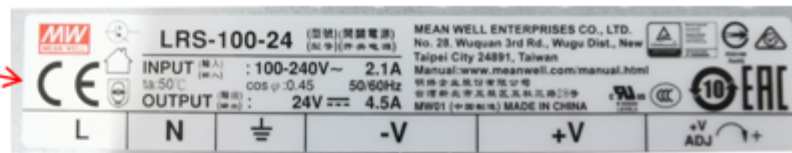
Newest TEC cooling guarantees machine 24hours working.

**Control board**

Independent research and development, system can be customized.



## Switch Power Supply

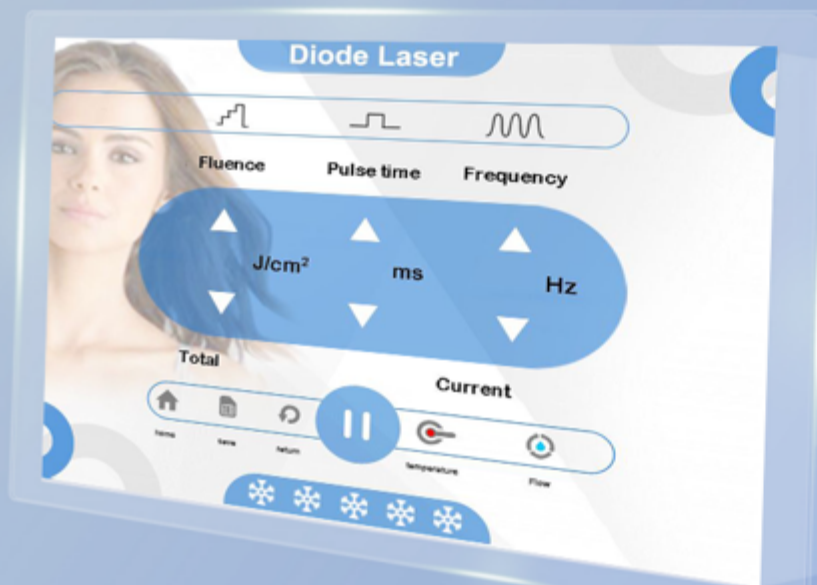


Switch power supply

Nice quality Meanwell power supply with CE mark.



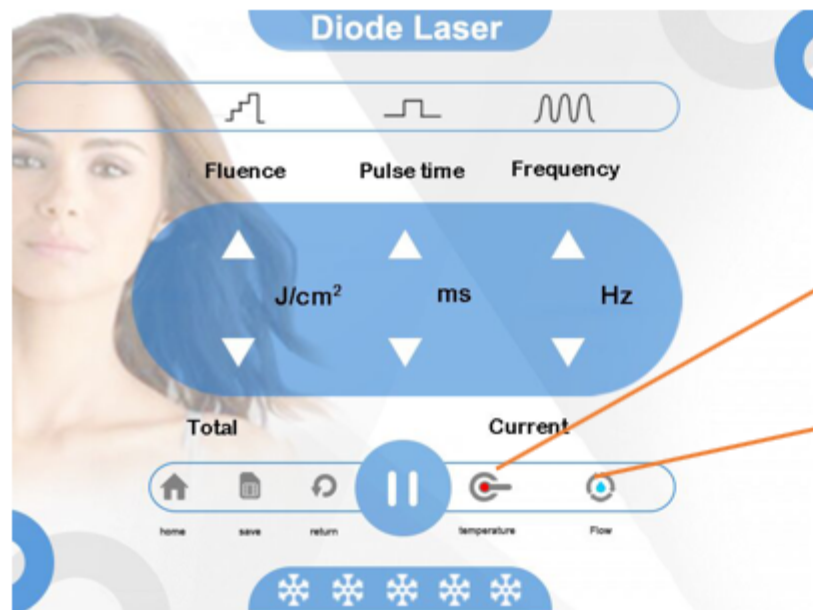
## Operation Interface



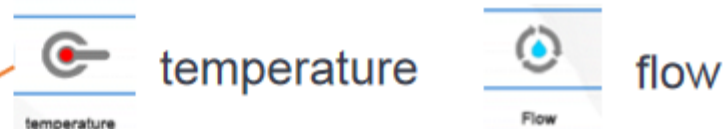
The user-friendly intelligent and simple operation interface only needs to select the gender and skin color, then you can start using the machine with the suggested parameters.



## Operation Interface



### Intelligent monitoring



Intelligently monitor water flow, water temperature, and machine operating conditions. When the machine runs abnormally, the screen automatically alarms to ensure that the machine is not damaged, and accurately reports the fault point of the machine. Accurate and convenient in the future use.



## Alive Images

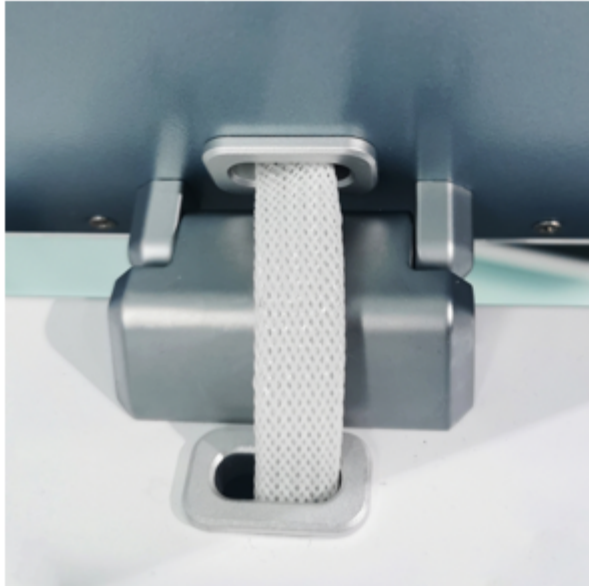


## Alive Images





## Machine Details



Imported damping shaft

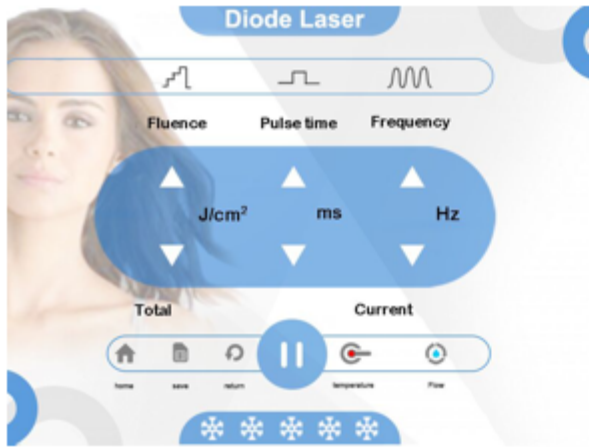


Handle bar



Handle connector

## Machine Details



Operation interface



Laser Handle



Silent Wheels



## Internal Details



Wiring process

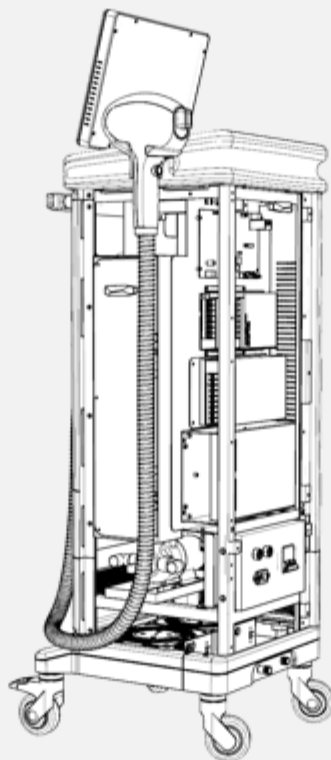


Circuit layout



Hydroelectric separation

## Design Concept



### Hydroelectric separation

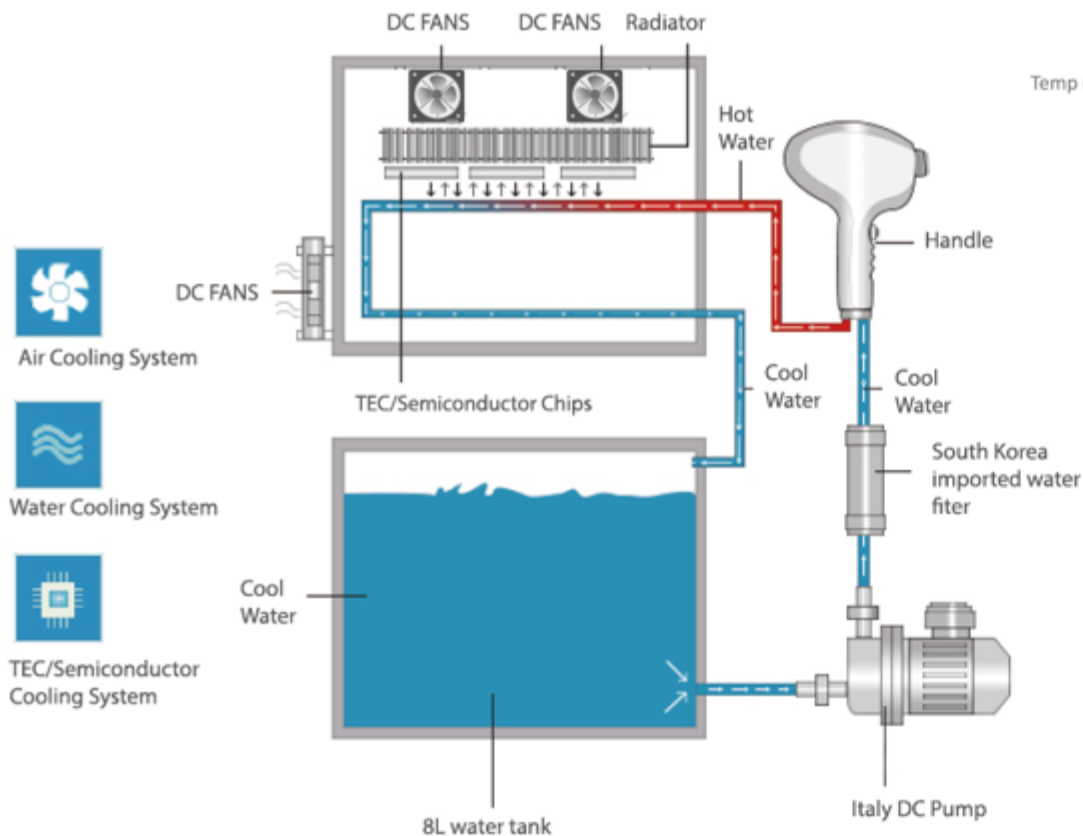
Water system and electricity system are separate, even if the machine leaks water, it will not damage the circuit.

### Easy maintenance

Remove the back cover of the machine, you can replace all electronic circuit boards inside. quite simple.



## TEC Cooling System



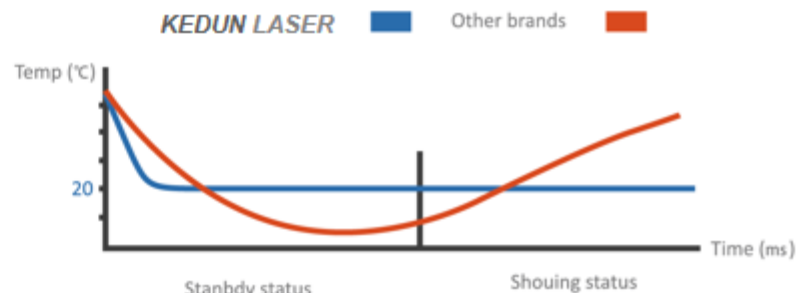
Air Cooling System



Water Cooling System



TEC/Semiconductor Cooling System



### Cooling System

Equipped with a TEC refrigeration system and an intelligent temperature monitoring sensor.

1. Make sure the instrument can run continuously for 24 hours.
2. Ensure that the temperature of handle surface is constant at 4 ° C to ensure the comfort of treatment.

## Packaging and Delivery

