

LULA

USER MANUAL

LULA Prefilled Pods
LULA Refillable Pods

Product Sponsor

BayPharma

info@baypharma.com.au
www.baypharma.com.au



SPECIFICATIONS

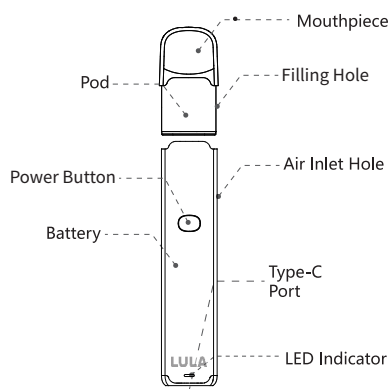
Size: 22*12*118.5mm
E-liquid Capacity:2.0mL
Resistance:1.4Ω
Output Wattage:8.5W
Battery Capacity: 580mAh
Charging: Type-C

PACKING LIST

- 1 x LULA Device
- 1 x Type-C Cable
- 1 x User Manual

****LULA Pods Sold Separately**

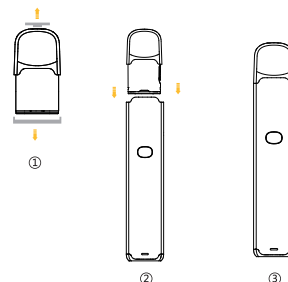
Exploded View



Operation Steps - Prefilled Pods

Step 1 Remove silicon seal

Remove the silicone seal from the mouth piece and bottom of LULA Pod. Place the LULA pod firmly into the LULA Device



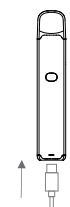
Step 2 Draw from device

Click to button 5 times to activate the device. Draw from the LULA device for 2-3 seconds and exhale



Step 3 Charging the Device

After connecting the Type-C cable the LED indicator will illuminate. Once the battery is fully charged the LED will turn off. **LULA device supports vaping while charging**



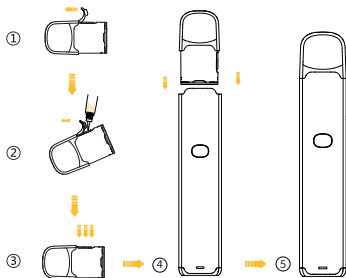
Operation Steps - Refillable Pods

Step 1 Fill LULA Pod with eLiquid

- Remove silicone gel plug at the side of the pod
- Insert nozzle of eLiquid bottle into pod and gently squeeze until the pod is filled
- Firmly replace the silicone gel plug

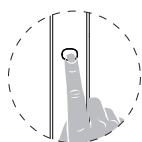
Wait 2-3 Minutes before vaping

Insert filled pod into the LULA device



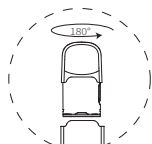
Step 2 Draw from device

Click to button 5 times to activate the device. Draw from the LULA device for 2-3 seconds and exhale



Step 3 Adjust Airflow

Rotate LULA pod 180° to adjust airflow - MTL / DTL



Battery Level

LED Color	Battery Status
Red	Low (0%-30%)
Blue	Medium (30%-70%)
Green	High (70%-100%)

PROTECTIONS

Protections	Situation	Indicator
Short-circuit Protection	The device detects a short-circuit.	Red, Blue, Green x 1 → Stop Output
No Load Protection	The device does not detect an atomizer when you press the button.	Red, Green x 2 → Stop Output
Low voltage Protection	The battery voltage drops too low.	LED flash 8 times → Stop Output
Auto-Shut off Protection	Constantly vape for 6 seconds.	LED flash 3 times → Stop Output
	Constantly vape for 8 seconds or more.	LED flash 5 times → Stop Output

Precautions

1. Turn off device when not in use
2. Do not leave charging unattended
3. Only use genuine LULA charger
4. Keep away from flammable liquids
5. Do not expose the device to direct sunlight, dust, moisture or mechanical shock
6. Do not expose device to extreme temperatures
7. Battery device should not be treated as household waste and should be disposed of in a dedicated battery recycling bins

Why use LULA

LULA vapourised nicotine device is designed to be used in treatment of smoking cessation and management of nicotine dependence. LULA should be used under medical supervision.

Considerations

1. Do not use LULA device if you are not a smoker or existing NVP user
2. Discuss with your doctor if you have high blood pressure, had a stroke, liver or kidney disease or a history of epilepsy.
3. Discuss with your doctor if you are pregnant or intend to become pregnant.

Common side effects from using LULA:

- Dizziness
- Throat irritation
- Cough

These symptoms should subside after a short period of use. If symptoms persist discuss with your healthcare provider