

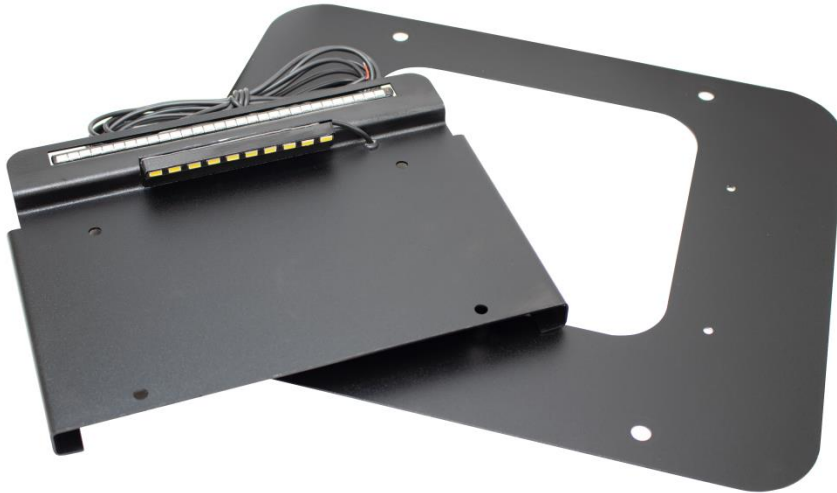


# INSTALLATION INSTRUCTIONS

**PART No.**

**80710**

**Jeep® TJ Wrangler  
Backside License Plate Mount w/ LED**



## REQUIRED TOOLS

Utility Knife  
Ratchet  
3/8" Socket  
Electrical Tape  
Wire Stripper  
3mm Allen  
4m Allen  
8mm Wrench  
11mm Wrench  
Screw Drivers  
String  
Drill  
1/16" Drill bit

## RECOMMENDED TOOLS

Solder & Solder Gun  
Electrical Wiring Kit  
Nylon Wiring Sleeve (or similar)

Lighter or Heat Source

## KIT CONTAINS

Backside Mounting Plate  
LED License Plate Mount  
M5 Stainless Steel Button Head Bolt  
M5 Stainless Steel Washer  
M5 Stainless Steel Nylock Nut  
¼-20 Stainless Steel Button Head Bolt – Black  
¼-20 Stainless Flange Nut  
Butt Splice Connectors  
½" Plastic Plug

## QTY

1  
1  
4  
8  
4  
4  
4  
4  
4  
1



# INSTALLATION INSTRUCTIONS

## PART No.

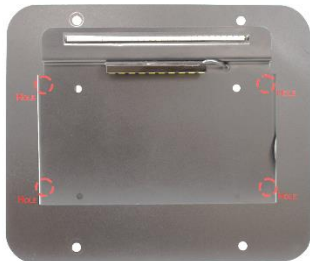
### 1) PREPARE

Prior to installation, remove your existing factory tire carrier or any aftermarket accessories that are using the tire carrier's bolt locations.

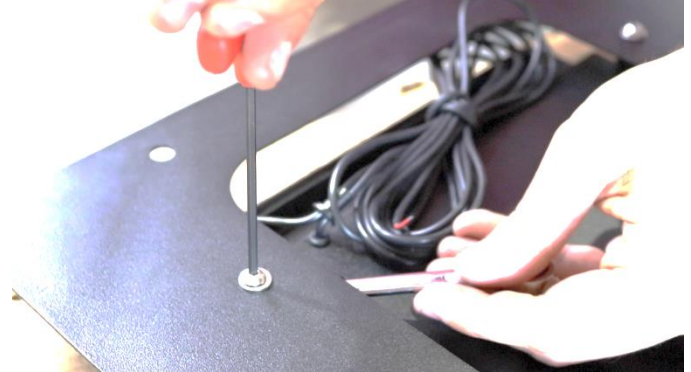


### 2) ASSEMBLE

Begin assembling your Backside. The larger mounting plate is directional, and its proper orientation is identified by the holes shown below. Placing the license plate mount over it should allow no large spaces to be seen.



Turn the pair over and with (4) M5 Bolts, Nylocs, and (8) Washers, and a 3mm Allen and 8mm wrench, secure the mounts together.



Next, install your license plate using the (4) ¼ -20 bolts and flange nuts with a 4mm Allen and 11mm wrench.



### 3) INSTALL THE BACKSIDE

Gently and evenly pull at your vehicle's air vent and remove it. Loosely install one bolt into the Backside using your factory tire carrier's hardware.





# INSTALLATION INSTRUCTIONS

## PART No.

Take the Backside's wires and push it through the front of the air vent, followed by pushing it through the tailgate and out the shown hole.



Reinstall the air vent and secure the rest of the Backside to the tailgate.

#### 4) WIRING PREP

Pull back the carpet from the passenger side until you locate the shown rubber plug.



Remove this plug, and with a utility knife, cut the point off until it is large enough to pass the Backside's wiring through



Run the wiring into this hole and reinsert the plug.

With a Philips screwdriver, remove the passenger side taillight cover. With a 3/8" socket, remove the 3 bolts within the housing, and pull the light away, exposing its wiring.



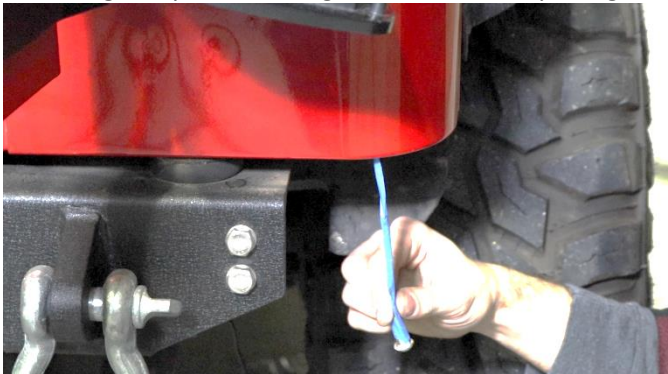
Reach under the tub, below the passenger taillight, and pull down the wire that was pushed through the interior. Open the tailgate completely to allow the wire to set its optimal length.



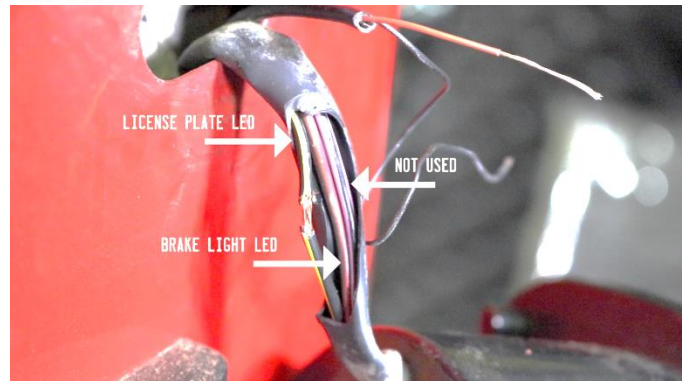
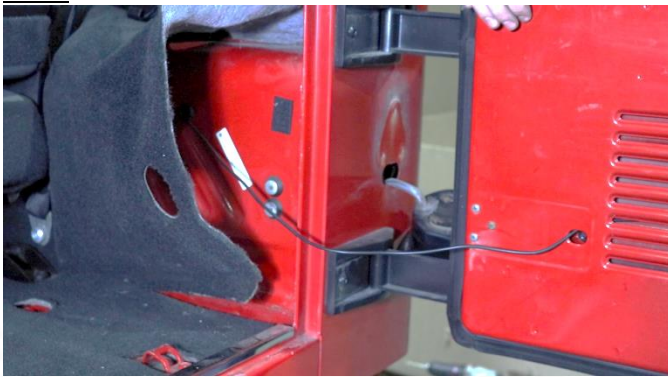
## INSTALLATION INSTRUCTIONS

### PART No.

With a piece of string that's weighted or similar, drop it through the taillight wire opening until it drops through the bottom of the tub. Attach the wire to the string and pull the string back out of the opening.



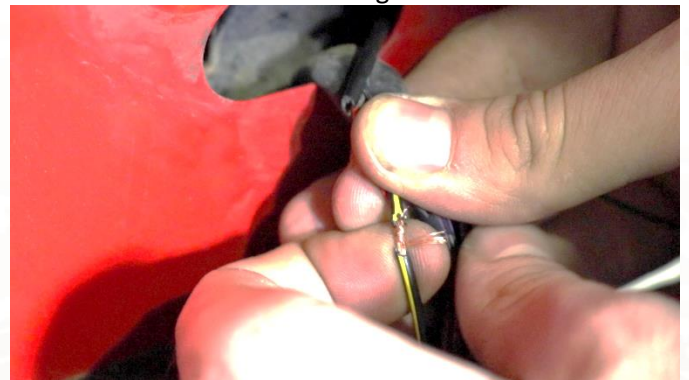
**Before cutting any wires, be sure there is enough slack in the wire for the tailgate to open and close comfortably, and without it getting pinched in the door.**



**The License Plate light red wire will connect to the Black & Yellow, and the Brake Light red wire will connect to the Brown & Red.**

**If you are unsure which wire leads to which LED, use a 9V battery to test which light works with each wire.**

With a pair of wire strippers, remove the rubber and expose both the ends of the Backside wires, and a small section into the two taillight wires.



#### 5) CONNECT THE WIRES

Begin connecting wires starting by carefully cutting into the taillight wiring harness, exposing 3 wires, (Black & Yellow, Brown & Red, and Black & Pink).

Wrap the Backside wires around their respective taillight wire, and secure them with electrical tape or your preferred method. Remember not to secure the black wires at this time.



# INSTALLATION INSTRUCTIONS

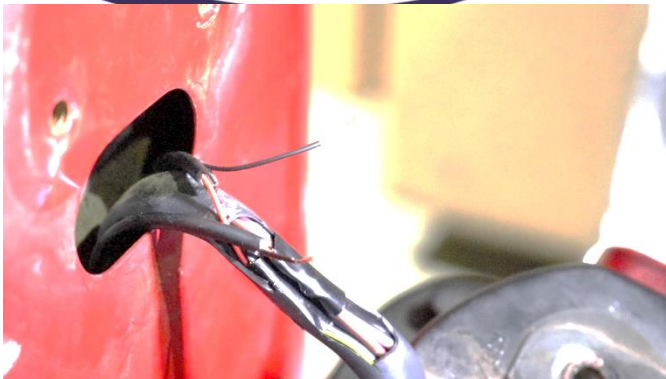
## PART No. REINSTALL

While the wires are still easily accessible, consider protecting them with a nylon sleeve or a spiral wire wrap to help prevent against them being pinched in the tailgate.

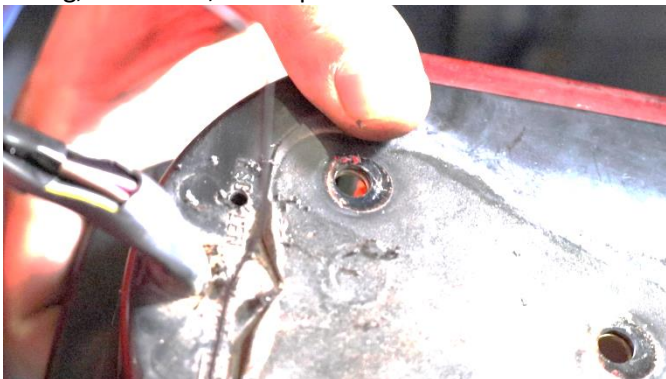
Reinstall your taillight completely, and resecure its cover.

Flatten your carpeting out.

With the supplied 1/2" Plastic Plug, push into place to install where denoted in the image below



Begin grounding the Backside wires by drilling into the back of the taillight case. With a 1/16" drill bit, drill a small hole just below either the left or right bolt hole, as shown. Be careful not damage the wiring, bolt holes, or lamps.



**ENJOY YOUR NEW KENTROL BACKSIDE LICENSE PLATE MOUNT!**

Push both ground wires through the hole, and begin reinstalling the taillight. Loosely secure the bolt nearest to the wires, and coil the wire around the stud. Secure them into place by tightening the bolt down onto the wires, creating a ground.

### 6) TEST

Before you seal everything up, test the LED lights by testing your brake and running lights.

Test to see if there is enough slack in the wire for the tailgate to open and close comfortably.