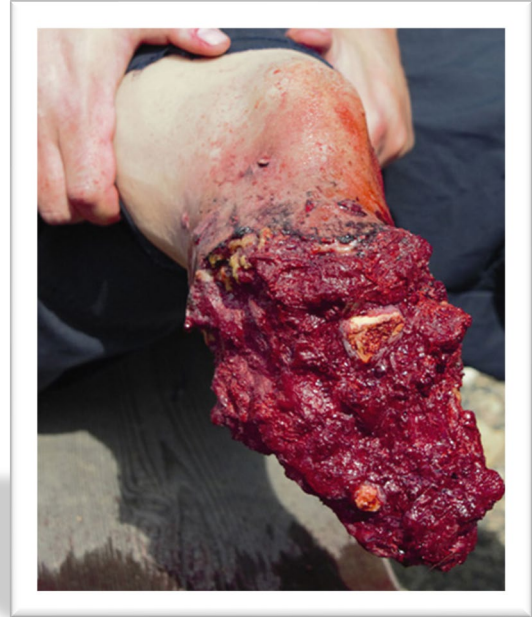




Techline Technologies, Inc.  
Device Specifications WW3-904  
Leg Amputation Hard Bone



# WW3-904

## Leg Amputation Hard Bone

Patent Nos. US8,221,129, US8,491,309

**TECHLINE®** Device Specifications  
November 4, 2021

**TECHLINETRAUMA.COM**

**Description-**

A wearable wound simulation that represents an amputation of the leg, exposing hard bone, muscle, fat, and tendons. The device attaches to the actor's thigh and is a realistic weight. It wraps around an actor or manikin and attaches with hook and loop fastening. Blood tubing is integrated into the construction to easily create simulated blood flow. It is supplied with a bleeding system. The PATENTED construction with the SOFTTECH® and ROCKTECH® materials, provides realism for your training scenario.

The WW3-904 operates with the included WW3-BRP Blood Supply Pump and is also compatible with SKEDCO® brand bleeding simulation equipment (sold separately).

**Construction-**

The representative skin and tissue of the WW3-904 is constructed of high quality silicone rubber, with layers of coloration that provide a depth and realism to the product. In addition, the SOFTTECH® and ROCKTECH® material has a realistic feel, is very durable and UV resistant. The skin also contains a reinforcing fabric that provides strength, and resistance to tear propagation should the skin be punctured or cut. Blood flow is simulated through the integrated tubing with supply connector.

**Operation-**

The hook and loop fastener is snugged to fit the actor or manikin, and the flaps are fastened together in an overlapping fashion. The blood supply line has a male fitting that is connected to the corresponding female fitting of the blood supply pump with a click-fit. The pump is utilized to provide simulated blood flow to the simulation.

**Maintenance-**

The simulation should be flushed with clean water at the end of use to clean out the simulated blood lines. The device should be rinsed in clean, warm water and allowed to dry before storage. The device may be washed with mild detergents like dish soap or cleaned with a disinfecting agent like isopropyl alcohol or a diluted bleach solution, as it is durable, and chemically resistant. Allow the device to dry fully before storage to prevent mold or mildew growth.



WW3-904 Leg Amputation Hard Bone  
Light, Medium, and Dark Skin Tones Available