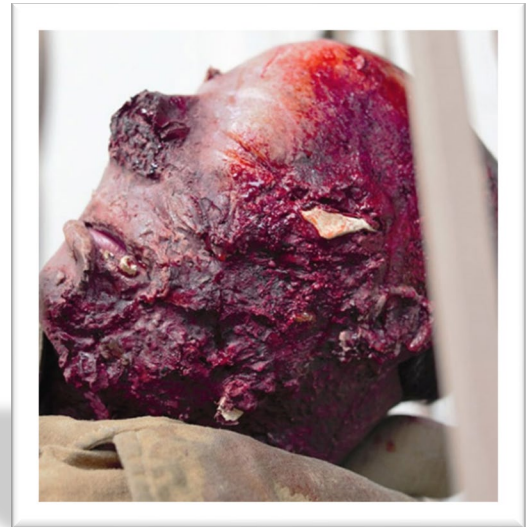




Techline Technologies, Inc.  
Device Specifications WW3-903  
Blast Face Hard Bone



# WW3-903

## Blast Face Hard Bone

Patent Nos. US8,221,129, US8,491,309

**TECHLINE®** Device Specifications  
November 4, 2021

**NSN 6910-01-703-0654**  
**TECHLINETRAUMA.COM**

**Description-**

A wearable wound simulation that represents a face with third degree burns exposing bone and teeth fragments and swelling. It wraps around the actor or manikin and attaches with hook and loop fastening to give the realistic appearance of a face with third degree burns. The PATENTED construction with SOFTTECH® and ROCKTECH® materials, provides realism for your training scenario.

The WW3-903 operates with the included WW3-BRP Blood Supply Pump and is also compatible with SKEDCO® brand bleeding simulation equipment (sold separately).

**Construction-**

The representative skin and tissue of the WW3-903 is constructed of high quality silicone rubber, with layers of coloration that provide a depth and realism to the product. In addition, the SOFTTECH® material has a realistic feel, and is very durable and UV resistant. The skin also contains a reinforcing fabric that provides strength, and resistance to tear propagation should the skin be punctured or cut. Blood flow is simulated through the integrated tubing with supply connector.

**Operation-**

The hook and loop fastener is snugged to fit the actor or manikin, and the flaps are fastened together in an overlapping fashion. The blood supply line has a male fitting that is connected to the corresponding female fitting of the blood supply pump with a click-fit. The pump is utilized to provide simulated blood flow to the simulation.

**Maintenance-**

The simulation should be flushed with clean water at the end of use to clean out the simulated blood lines. The device should be rinsed in clean, warm water and allowed to dry before storage. The device may be washed with mild detergents like dish soap or cleaned with a disinfecting agent like isopropyl alcohol or a diluted bleach solution, as it is durable, and chemically resistant. Allow the device to dry fully before storage to prevent mold or mildew growth.



WW3-903 Blast Face Hard Bone  
Light, Medium, and Dark Skin Tones Available