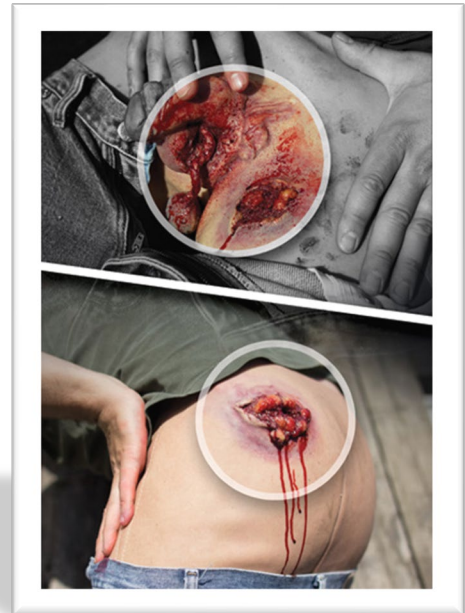




Techline Technologies, Inc.
Device Specifications WW3-055
GSW To Groin (Male)



WW3-055

GSW To Groin (Male)

Patent Nos. US8,221,129, US8,491,309

TECHLINE® Device Specifications
November 4, 2021

NSN 6910-01-681-5395
TECHLINETRAUMA.COM

Description-

A wearable wound simulations® that represents a gunshot wound to a male groin, showing an exposed testicle, muscle, fat, and artery. Bleeding can be stopped with hemostats, junctional tourniquets or packed with QuickClot Combat Gauze or similar product. The exit wound also bleeds and is packable. The tubing within the device is designed to work with SKEDCO® Field Expedient Bleeding Simulator. The PATENTED construction with SOFTTECH® materials, provides realism for your training scenario.

The WW3-055 operates with the included WW3-BRP Blood Supply Pump and is also compatible with SKEDCO® brand bleeding simulation equipment (sold separately).

Construction-

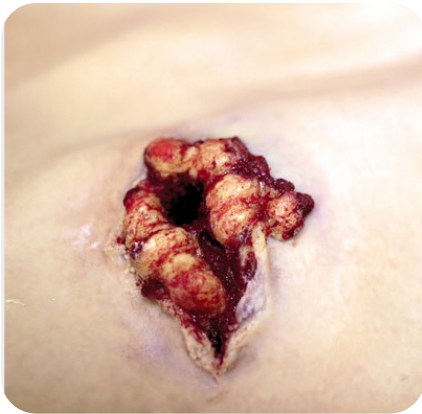
The representative skin and tissue of the WW3-055 is constructed of high quality silicone rubber, with layers of coloration that provide a depth and realism to the product. In addition, the SOFTTECH® material has a realistic feel, and is very durable and UV resistant. The skin also contains a reinforcing fabric that provides strength, and resistance to tear propagation should the skin be punctured or cut. Blood flow is simulated through the integrated tubing with supply connector.

Operation-

The device is worn like a diaper. The hook and loop fastener is snugged to fit the actor or manikin, and the flaps are fastened together in an overlapping fashion. The blood supply line has a male fitting that is connected to the corresponding female fitting of the blood supply pump with a click-fit. The pump is utilized to provide simulated blood flow to the simulation.

Maintenance-

The simulation should be flushed with clean water at the end of use to clean out the simulated blood lines. The device should be rinsed in clean, warm water and allowed to dry before storage. The device may be washed with mild detergents like dish soap or cleaned with a disinfecting agent like isopropyl alcohol or a diluted bleach solution, as it is durable, and chemically resistant. Allow the device to dry fully before storage to prevent mold or mildew growth.



WW3-055 GSW To Groin (Male)
Light, Medium, and Dark Skin Tones Available