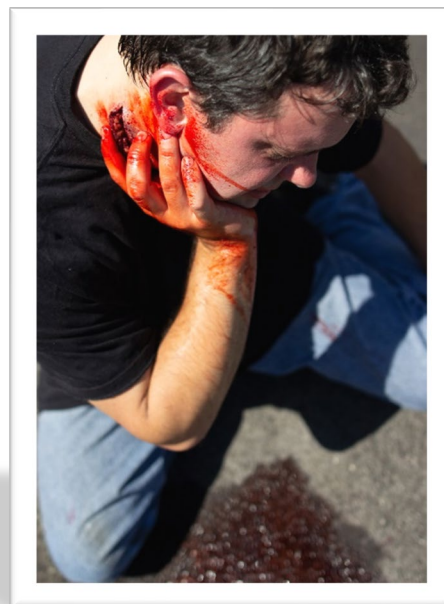




Techline Technologies, Inc.  
Device Specifications WW3-014  
Neck Laceration Wound



# WW3-014

## Neck Wound

Patent Nos. US8,221,129, US8,491,309

**TECHLINE®** Device Specifications  
November 4, 2021

**NSN 6910-01-681-5362**  
**TECHLINETRAUMA.COM**

**Description-**

A wearable wound simulation® that represents a neck injury exposing fat and muscle. Supplied with bleeding system. It wraps around an actor or manikin and attaches with hook and loop fastening. Blood tubing is integrated into the construction to easily create simulated blood flow. The PATENTED construction with SOFTTECH® materials provides realism for your training scenario.

The WW3-014 operates with the included WW3-BRP Blood Supply Pump and is also compatible with SKEDCO® brand bleeding simulation equipment (sold separately).

**Construction-**

The representative skin and tissue of the WW3-014 is constructed of high quality silicone rubber, with layers of coloration that provide a depth and realism to the product. In addition, the SOFTTECH® material has a realistic feel, and is very durable and UV resistant. The skin also contains a reinforcing fabric that provides strength, and resistance to tear propagation should the skin be punctured or cut. Blood flow is simulated through the integrated tubing with supply connector.

**Operation-**

The hook and loop fastener is snugged to fit the actor or manikin, and the flaps are fastened together in an overlapping fashion. The blood supply line has a male fitting that is connected to the corresponding female fitting of the blood supply pump with a click-fit. The pump is utilized to provide simulated blood flow to the simulation.

**Maintenance-**

The simulation should be flushed with clean water at the end of use to clean out the simulated blood lines. The device should be rinsed in clean, warm water and allowed to dry before storage. The device may be washed with mild detergents like dish soap or cleaned with a disinfecting agent like isopropyl alcohol or a diluted bleach solution, as it is durable, and chemically resistant. Allow the device to dry fully before storage to prevent mold or mildew growth.



**WW3-014 Neck Wound**  
Light, Medium, and Dark Skin Tones Available