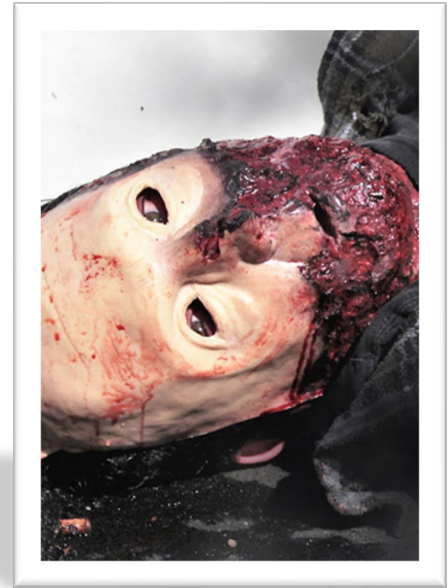




Techline Technologies, Inc.
Device Specifications WW3-011
Burned Face – Full Mask



WW3-011

Burned Face – Full Mask

Patent Nos. US8,221,129, US8,491,309

TECHLINE® Device Specifications
November 4, 2021

TECHLINETRAUMA.COM

Description-

A wearable wound simulation that represents a face with third degree burns. It wraps around an actor or manikin and attaches with hook and loop fastening to give the realistic appearance of a face with third degree burns. The PATENTED construction with SOFTTECH® materials, provides realism for your training scenario.

This wearable wound comes without a bleeding system.

Construction-

The representative skin and tissue of the WW3-011 is constructed of high quality silicone rubber, with layers of coloration that provide a depth and realism to the product. In addition, the SOFTTECH® material has a realistic feel, and is very durable and UV resistant. The skin also contains a reinforcing fabric that provides strength, and resistance to tear propagation should the skin be punctured or cut.

Operation-

The hook and loop fastener is snugged to fit the actor or manikin, and the flaps are fastened together in an overlapping fashion.

Maintenance-

The device should be rinsed in clean, warm water and allowed to dry before storage. The device may be washed with mild detergents like dish soap or cleaned with a disinfecting agent like isopropyl alcohol or a diluted bleach solution, as it is durable, and chemically resistant. Allow the device to dry fully before storage to prevent mold or mildew growth.



WW3-011 Burned Face – Full Mask
Light, Medium, and Dark Skin Tones Available