



# Wounds in a Box<sup>®</sup>

## TECHLINE<sup>®</sup> PTT Product Line

Patent No. US10,217,380, US10,535,282, US10,586,470,  
US11,195,434, US11,195,435, Patents Pending

Device Specifications

October 22, 2021

## PTT-B01 Gunshot in a Box™



A part task trainer that represents a gunshot wound (GSW) exposing fat and muscle tissue. It is a self-contained device that is designed to train wound-packing. With simulated blood flow, the device allows the packing of the wound channel with gauze or hemostatic gauze, providing internal pressure to stem the bleeding. The device blood tubing is fitted with a male connector that fastens easily to a simulated blood pump. The PATENTED construction with SOFTTECH® materials, provides realism for your training scenario. The PTT-B01 operates with the WW3-BRP Blood Supply Pump and is also compatible with SKEDCO® brand bleeding simulation equipment. Bleeding pumps sold separately.

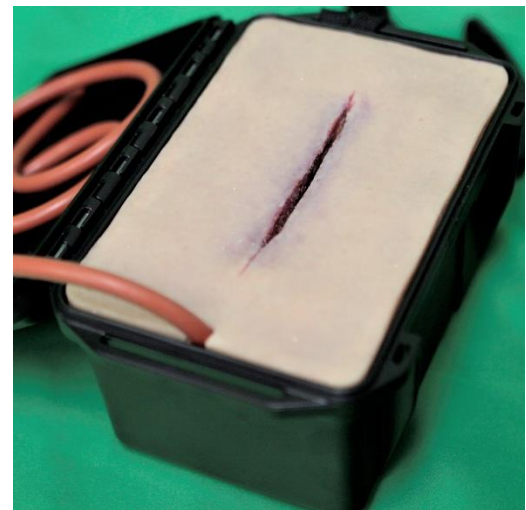
### Construction-

- The representative skin and tissue of the PTT-B01 is constructed of high quality silicone rubber, with layers of coloration that provide a depth and realism to the product. In addition, the SOFTTECH® material has a realistic feel, and is very durable and UV resistant. Blood flow is simulated through the integrated tubing with supply connector.
- The device comes in the integrated storage container. Although, the simulation may be removed from the box for cleaning and drying.

---

## PTT-B02 Laceration in a Box™

A part task trainer that represents a laceration exposing fat and muscle tissue. It is a self-contained device that is designed to train wound-packing. With simulated blood flow, the device allows the packing of the wound channel with gauze or hemostatic gauze, providing internal pressure to stem the bleeding. The device blood tubing is fitted with a male connector that fastens easily to a simulated blood pump. The PATENTED construction with SOFTTECH® materials, provides realism for your training scenario. The PTT-B02 operates with the WW3-BRP Blood Supply Pump and is also compatible with SKEDCO® brand bleeding simulation equipment. Bleeding pumps sold separately.



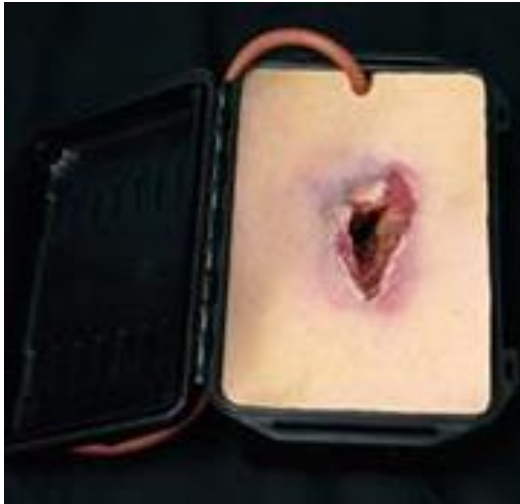
### Construction-

- The representative skin and tissue of the PTT-B02 is constructed of high quality silicone rubber, with layers of coloration that provide a depth and realism to the product. In addition, the SOFTTECH® material has a realistic feel, and is very durable and UV resistant. Blood flow is simulated through the integrated tubing with supply connector.
- The device comes in the integrated storage container. Although, the simulation may be removed from the box for cleaning and drying.

### **Techline Technologies, Inc. Proprietary**

Data contained on all pages of this document shall not be disclosed outside the government or be duplicated, used, or disclosed in whole or in part for any other purpose than evaluation.

## PTT-B03 Shrapnel Wound in a Box™



A part task trainer that represents a shrapnel wound exposing fat and muscle tissue, with bone fragments in the wound channel. It is a self-contained device that is designed to train wound-packing. With simulated blood flow, the device allows the packing of the wound channel with gauze or hemostatic gauze, providing internal pressure to stem the bleeding. The operator must navigate around the bone fragments to properly pack the point of bleeding. The device blood tubing is fitted with a male connector that fastens easily to a simulated blood pump. The PATENTED construction with SOFTTECH® and ROCKTECH® materials, provides realism for your training scenario. The PTT-B03 operates with the WW3-BRP Blood Supply Pump and is also compatible with SKEDCO® brand bleeding simulation equipment. Bleeding pumps sold separately.

### Construction-

- The representative skin and tissue of the PTT-B03 is constructed of high quality silicone rubber, with layers of coloration that provide a depth and realism to the product. In addition, the SOFTTECH® and ROCKTECH® materials have a realistic feel, and is very durable and UV resistant. Blood flow is simulated through the integrated tubing with supply connector.
- The device comes in the integrated storage container. Although, the simulation may be removed from the box for cleaning and drying.

---

### WW3-BRP BLOOD SUPPLY PUMP

This simulated blood supply reservoir with manual pump is designed to attach to any TECHLINE® Trauma bleeding wearable wound simulation, Wound in a Box®, or part task trainer.

The blood flow is controlled by the operator by squeezing the hand-bulb attached to the supply line. This allows the operator to stop the blood flow when the proper medical intervention has been taken.



### Construction-

- 2 liter hydration reservoir bag with screw top opening.
- Hand-bulb pump with check valve to prevent open flow.
- 30 inches of blood flow tubing with standard TECHLINE® female locking connector.

### **Techline Technologies, Inc. Proprietary**

Data contained on all pages of this document shall not be disclosed outside the government or be duplicated, used, or disclosed in whole or in part for any other purpose than evaluation.



WOUNDS-IN-A-BOX®

# ***BIG Performance***

***...little package***

***EASY TO TRANSPORT, YET RUGGED ENOUGH FOR CLASSROOM OR FIELD USE.***

The *Wounds-in-a-Box®* series offers cost effective, compact solutions for skills training. Easily integrated into existing training, driving the students to practice life saving interventions on wounds that look and feel real. Bleeding can be supplied by hand pumps or a *SKEDCO Field Expedient Bleeding Simulation System (FEBSS) Hydrasim®* (Not included) for realistic training.



[P] 855.426.0321 • [F] 215.657.4430

**Techline Technologies, Inc. Proprietary**

Data contained on all pages of this document shall not be disclosed outside the government or be duplicated, used, or disclosed in whole or in part for any other purpose than evaluation.