



Wearable Wound Simulations

WW3 Product Line

Patent No. US8,221,129, US8,491,30 & other Patents
Pending

Device Specifications

January 17, 2022



WW3-001 THIGH LACERATION

A wearable wound simulation® that represents a deep laceration exposing fat and muscle tissue. It wraps around an actor or manikin and attaches with hook and loop fastening. Blood tubing is integrated into the construction to easily create simulated blood flow. The PATENTED construction with SOFTTECH® materials, provides realism for your training scenario.

The WW3-001 operates with the included WW3-BRP Blood Supply Pump and is also compatible with SKEDCO® brand bleeding simulation equipment (sold separately).

Construction-

- The representative skin and tissue of the WW3-001 is constructed of high quality silicone rubber, with layers of coloration that provide a depth and realism to the product. In addition, the SOFTTECH® material has a realistic feel, and is very durable and UV resistant. The skin also contains a reinforcing fabric that provides strength, and resistance to tear propagation should the skin be punctured or cut. Blood flow is simulated through the integrated tubing with supply connector.



WW3-002 GSW THROUGH HAND (RIGHT)

A wearable wound simulation® that represents through-and-through gunshot to the right palm exposing fat, muscle, bone, and tendons. It bleeds from both the entry and exit wounds. It wraps around an actor or manikin and attaches with hook and loop fastening. Blood tubing is integrated into the construction to easily create simulated blood flow. The PATENTED construction with SOFTTECH® materials, provides realism for your training scenario.

The WW3-002 operates with the included WW3-BRP Blood Supply Pump and is also compatible with SKEDCO® brand bleeding simulation equipment (sold separately).

Construction-

- The representative skin and tissue of the WW3-002 is constructed of high quality silicone rubber, with layers of coloration that provide a depth and realism to the product. In addition, the SOFTTECH® material has a realistic feel, and is very durable and UV resistant. The skin also contains a reinforcing fabric that provides strength, and resistance to tear propagation should the skin be punctured or cut. Blood flow is simulated through the integrated tubing with supply connector.

Techline Technologies, Inc. Proprietary

Data contained on all pages of this document shall not be disclosed outside the government or be duplicated, used, or disclosed in whole or in part for any other purpose than evaluation.



WW3-003 IMPALED OBJECT

A wearable wound simulation® that represents a piece of rebar impaled into the flesh. It wraps around an actor or manikin and attaches with hook and loop fastening. The PATENTED construction with SOFTTECH® and ROCKTECH® materials, provides realism for your training scenario.

The WW3-003 is constructed in two pieces. The main simulation that represents the flesh wound, and a removable piece of replica re-bar that inserts through the wound site.

Construction-

- The representative skin and tissue of the WW3-003 is constructed of high quality silicone rubber, with layers of coloration that provide a depth and realism to the product. In addition, the SOFTTECH® and ROCKTECH® materials have a realistic feel and are very durable and UV resistant. The skin also contains a reinforcing fabric that provides strength, and resistance to tear propagation should the skin be punctured or cut. Blood flow is simulated through the integrated tubing with supply connector.



WW3-004 SEVERE BURN FOREARM (RIGHT)

A wearable wound simulation® that represents a third degree burn to the right forearm showing charred skin, and exposed burned flesh. The device is constructed as a half-mask which allows for unobstructed breathing through the nose. It wraps around an actor or manikin and attaches with hook and loop fastening. The PATENTED construction with SOFTTECH® materials, provides realism for your training scenario.

Construction-

- The representative skin and tissue of the WW3-004 is constructed of high quality silicone rubber, with layers of coloration that provide a depth and realism to the product. In addition, the SOFTTECH® material has a realistic feel, and is very durable and UV resistant. The skin also contains a reinforcing fabric that provides strength, and resistance to tear propagation should the skin be punctured or cut.

Techline Technologies, Inc. Proprietary

Data contained on all pages of this document shall not be disclosed outside the government or be duplicated, used, or disclosed in whole or in part for any other purpose than evaluation.



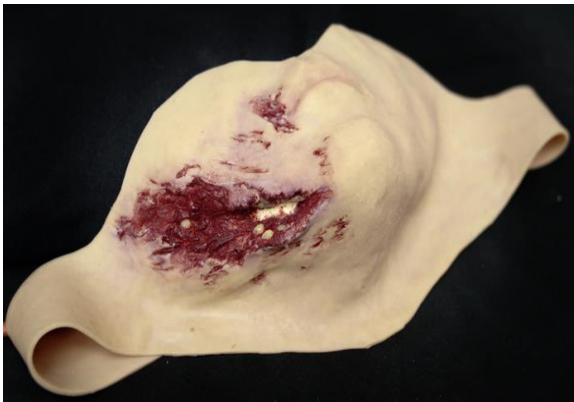
WW3-005 Evisceration

A wearable wound simulation® that represents a deep laceration with exposed bowel and fat tissue. It wraps around an actor or manikin and attaches with hook and loop fastening. Blood tubing is integrated into the construction to easily create simulated blood flow. Supplied with bleeding system. The PATENTED construction with SOFTTECH® materials, provides realism for your training scenario.

The WW3-005 operates with the included WW3-BRP Blood Supply Pump and is also compatible with SKEDCO® brand bleeding simulation equipment (sold separately).

Construction-

- The representative skin and tissue of the WW3-005 is constructed of high quality silicone rubber, with layers of coloration that provide a depth and realism to the product. In addition, the SOFTTECH® material has a realistic feel, and is very durable and UV resistant. The skin also contains a reinforcing fabric that provides strength, and resistance to tear propagation should the skin be punctured or cut. Blood flow is simulated through the integrated tubing with supply connector.



WW3-006 BROKEN JAW WITH LACERATION

A wearable wound simulation® that represents a broken jaw with open wound showing bone, muscle, and fat tissues. The device is constructed as a half-mask which allows for unobstructed breathing through the nose. It wraps around an actor or manikin and attaches with hook and loop fastening. The PATENTED construction with SOFTTECH® materials, provides realism for your training scenario.

Construction-

- The representative skin and tissue of the WW3-006 is constructed of high quality silicone rubber, with layers of coloration that provide a depth and realism to the product. In addition, the SOFTTECH® material has a realistic feel, and is very durable and UV resistant. The skin also contains a reinforcing fabric that provides strength, and resistance to tear propagation should the skin be punctured or cut.

Techline Technologies, Inc. Proprietary

Data contained on all pages of this document shall not be disclosed outside the government or be duplicated, used, or disclosed in whole or in part for any other purpose than evaluation.

WW3-007 OPEN WOUND SCALP



A wearable wound simulation® that represents a laceration to the scalp with exposed bone. The device is constructed as one-piece wig with a friction fit. Blood tubing is integrated into the construction to easily create simulated blood flow. The PATENTED construction with SOFTTECH® materials, provides realism for your training scenario.

The WW3-007 operates with the included WW3-BRP Blood Supply Pump and is also compatible with SKEDCO® brand bleeding simulation equipment (sold separately).

Construction-

- The representative skin and tissue of the WW3-007 is constructed of high quality silicone rubber, with layers of coloration that provide a depth and realism to the product. In addition, the SOFTTECH® material has a realistic feel, and is very durable and UV resistant. The skin also contains a reinforcing fabric that provides strength, and resistance to tear propagation should the skin be punctured or cut. Blood flow is simulated through the integrated tubing with supply connector.

WW3-008 COMPOUND FRACTURE (ARM)



A wearable wound simulation® that represents a compound fracture to the wrist exposing fat, muscle, and bone. It wraps around an actor or manikin and attaches with hook and loop fastening. Blood tubing is integrated into the construction to easily create simulated blood flow. The PATENTED construction with SOFTTECH® materials, provides realism for your training scenario.

The WW3-008 operates with the included WW3-BRP Blood Supply Pump and is also compatible with SKEDCO® brand bleeding simulation equipment (sold separately).

Construction-

- The representative skin and tissue of the WW3-008 is constructed of high quality silicone rubber, with layers of coloration that provide a depth and realism to the product. In addition, the SOFTTECH® material has a realistic feel, and is very durable and UV resistant. The skin also contains a reinforcing fabric that provides strength, and resistance to tear propagation should the skin be punctured or cut. Blood flow is simulated through the integrated tubing with supply connector.

Techline Technologies, Inc. Proprietary

Data contained on all pages of this document shall not be disclosed outside the government or be duplicated, used, or disclosed in whole or in part for any other purpose than evaluation.



WW3-009 AVULSION TO CALF

A wearable wound simulation® that represents a severe avulsion with torn flesh to the calf exposing fat and muscle. It wraps around an actor or manikin and attaches with hook and loop fastening. Blood tubing is integrated into the construction to easily create simulated blood flow. The PATENTED construction with SOFTTECH® materials, provides realism for your training scenario.

The WW3-009 operates with the included WW3-BRP Blood Supply Pump and is also compatible with SKEDCO® brand bleeding simulation equipment (sold separately).

Construction-

- The representative skin and tissue of the WW3-009 is constructed of high quality silicone rubber, with layers of coloration that provide a depth and realism to the product. In addition, the SOFTTECH® material has a realistic feel, and is very durable and UV resistant. The skin also contains a reinforcing fabric that provides strength, and resistance to tear propagation should the skin be punctured or cut. Blood flow is simulated through the integrated tubing with supply connector.



WW3-010 GSW TO LEG

A wearable wound simulation® that represents through-and-through gunshot to the thigh exposing fat and muscle. The device has a channel connecting the entrance and exit wounds to allow the packing of the wound with gauze. It wraps around an actor or manikin and attaches with hook and loop fastening. Blood tubing is integrated into the construction to easily create simulated blood flow. The PATENTED construction with SOFTTECH® materials, provides realism for your training scenario.

The WW3-010 operates with the included WW3-BRP Blood Supply Pump and is also compatible with SKEDCO® brand bleeding simulation equipment (sold separately).

Construction-

- The representative skin and tissue of the WW3-010 is constructed of high quality silicone rubber, with layers of coloration that provide a depth and realism to the product. In addition, the SOFTTECH® material has a realistic feel, and is very durable and UV resistant. The skin also contains a reinforcing fabric that provides strength, and resistance to tear propagation should the skin be punctured or cut. Blood flow is simulated through the integrated tubing with supply connector.

Techline Technologies, Inc. Proprietary

Data contained on all pages of this document shall not be disclosed outside the government or be duplicated, used, or disclosed in whole or in part for any other purpose than evaluation.



WW3-011 Burned Face (Full Mask)

A wearable wound simulation® that represents a face with third degree burns. It wraps around an actor or manikin and attaches with hook and loop fastening to give the realistic appearance of a face with third degree burns. The PATENTED construction with SOFTTECH® materials, provides realism for your training scenario.

Construction-

- The representative skin and tissue of the WW3-011 is constructed of high quality silicone rubber, with layers of coloration that provide a depth and realism to the product. In addition, the SOFTTECH® material has a realistic feel, and is very durable and UV resistant. The skin also contains a

reinforcing fabric that provides strength, and resistance to tear propagation should the skin be punctured or cut.



WW3-012 Wound Extender

A wearable wound that extends the wound to fit around different sized actors and role players. The Wound Extender allows wounds with hook and loop closures to be used on a variety of actors. Also allows wounds designed for use on arms and legs to be used multiple locations on the actor. It wraps around an actor or manikin and attaches with hook and loop fastening. The PATENTED construction with SOFTTECH® materials, provides realism for your training scenario.

The WW3-012 can be used for any WW3 wearable wound product (sold separately).

Construction-

- The representative skin and tissue of the WW3-012 is constructed of high quality silicone rubber, with layers of coloration that provide a depth and realism to the product. In addition, the SOFTTECH® material has a realistic feel, and is very durable and UV resistant. The skin also contains a reinforcing fabric that provides strength, and resistance to tear propagation should the skin be punctured or cut.

Techline Technologies, Inc. Proprietary

Data contained on all pages of this document shall not be disclosed outside the government or be duplicated, used, or disclosed in whole or in part for any other purpose than evaluation.



WW3-014 Neck Wound

A wearable wound simulation® that represents a neck injury exposing fat and muscle. Supplied with bleeding system. Wrap-around device with hook and loop fasteners. The device has a channel connecting the entrance and exit wounds to allow the packing of the wound with gauze. It wraps around an actor or manikin and attaches with hook and loop fastening. Blood tubing is integrated into the construction to easily create simulated blood flow. The PATENTED construction with SOFTTECH® materials, provides realism for your training scenario.

The WW3-014 operates with the included WW3-BRP Blood Supply Pump and is also compatible with SKEDCO® brand bleeding simulation equipment (sold separately).

Construction-

- The representative skin and tissue of the WW3-014 is constructed of high quality silicone rubber, with layers of coloration that provide a depth and realism to the product. In addition, the SOFTTECH® material has a realistic feel, and is very durable and UV resistant. The skin also contains a reinforcing fabric that provides strength, and resistance to tear propagation should the skin be punctured or cut. Blood flow is simulated through the integrated tubing with supply connector.



WW3-051 Partial Arm Amputation (Right)

A wearable wound simulation® that shows exposed bone, muscle, fat, and tendons. The wound is a realistic weight to allow for the most realistic simulation possible. It wraps around an actor or manikin and attaches with hook and loop fastening. Blood tubing is integrated into the construction to easily create simulated blood flow. The PATENTED construction with SOFTTECH® materials, provides realism for your training scenario.

The WW3-051 operates with the included WW3-BRP Blood Supply Pump and is also compatible with SKEDCO® brand bleeding simulation equipment (sold separately).

Construction-

- The representative skin and tissue of the WW3-051 is constructed of high quality silicone rubber, with layers of coloration that provide a depth and realism to the product. In addition, the SOFTTECH® material has a realistic feel, and is very durable and UV resistant. The

Techline Technologies, Inc. Proprietary

Data contained on all pages of this document shall not be disclosed outside the government or be duplicated, used, or disclosed in whole or in part for any other purpose than evaluation.

skin also contains a reinforcing fabric that provides strength, and resistance to tear propagation should the skin be punctured or cut. Blood flow is simulated through the integrated tubing with supply connector.



WW3-052 Partial Leg Amputation (Right)

A wearable wound simulation® that shows exposed bone, muscle, fat, and tendons. The device attaches to the actor's thigh. The wound is a realistic weight to allow for the most realistic simulation possible. It wraps around an actor or manikin and attaches with hook and loop fastening. Blood tubing is integrated into the construction to easily create simulated blood flow. The PATENTED construction with SOFTTECH® materials, provides realism for your training scenario.

The WW3-052 operates with the included WW3-BRP Blood Supply Pump and is also compatible with SKEDCO® brand bleeding simulation equipment (sold separately).

Construction-

- The representative skin and tissue of the WW3-052 is constructed of high quality silicone rubber, with layers of coloration that provide a depth and realism to the product. In addition, the SOFTTECH® material has a realistic feel, and is very durable and UV resistant. The skin also contains a reinforcing fabric that provides strength, and resistance to tear propagation should the skin be punctured or cut. Blood flow is simulated through the integrated tubing with supply connector.



WW3-054 Shrapnel-Full Arm (Right)

A wearable wound simulation® that represents shrapnel hitting a full right arm. Device shows superficial shrapnel wounds. Bleeding system designed to ooze from multiple locations. Supplied with bleeding system. Wrap-around hook and loop closure. The device has a channel connecting the entrance and exit wounds to allow the packing of the wound with gauze. It wraps around an actor or manikin and attaches with hook and loop fastening. Blood tubing is integrated into the construction to easily create simulated blood flow. The PATENTED construction with SOFTTECH® materials, provides realism for your training scenario.

The WW3-054 operates with the included WW3-BRP Blood Supply Pump and is also compatible with SKEDCO® brand bleeding simulation equipment (sold separately).

Techline Technologies, Inc. Proprietary

Data contained on all pages of this document shall not be disclosed outside the government or be duplicated, used, or disclosed in whole or in part for any other purpose than evaluation.

Construction-

- The representative skin and tissue of the WW3-054 is constructed of high quality silicone rubber, with layers of coloration that provide a depth and realism to the product. In addition, the SOFTTECH® material has a realistic feel, and is very durable and UV resistant. The skin also contains a reinforcing fabric that provides strength, and resistance to tear propagation should the skin be punctured or cut. Blood flow is simulated through the integrated tubing with supply connector.

WW3-055 GSW To Groin (Male)



A wearable wound simulation® that represents a gunshot wound to a male groin, showing an exposed testicle, muscle, fat, and artery. Bleeding can be stopped with hemostats, junctional tourniquets or packed with QuickClot Combat Gauze or similar product. The exit wound also bleeds and is packable. The tubing within the device is designed to work with SKEDCO Field Expedient Bleeding Simulator. The PATENTED construction with SOFTTECH® materials, provides realism for your training scenario.

The WW3-055 operates with the included WW3-BRP Blood Supply Pump and is also compatible with SKEDCO® brand bleeding simulation equipment (sold separately). with SKEDCO® brand bleeding simulation equipment (sold separately).

Construction-

- The representative skin and tissue of the WW3-055 is constructed of high quality silicone rubber, with layers of coloration that provide a depth and realism to the product. In addition, the SOFTTECH® material has a realistic feel, and is very durable and UV resistant. The skin also contains a reinforcing fabric that provides strength, and resistance to tear propagation should the skin be punctured or cut. Blood flow is simulated through the integrated tubing with supply connector.

Techline Technologies, Inc. Proprietary

Data contained on all pages of this document shall not be disclosed outside the government or be duplicated, used, or disclosed in whole or in part for any other purpose than evaluation.

WW3-071 Arm Amputation



A wearable wound simulation® that represents an arm amputation on the arm. The simulation shows exposed bone, muscle, fat, and tendons. deep laceration exposing fat and muscle tissue. It wraps around an actor or manikin and attaches with hook and loop fastening. Blood tubing is integrated into the construction to easily create simulated blood flow. Supplied with bleeding system. The PATENTED construction with SOFTTECH® materials, provides realism for your training scenario.

The WW3-071 operates with the included WW3-BRP Blood Supply Pump and is also compatible with SKEDCO® brand bleeding simulation equipment (sold separately).

Construction-

- The representative skin and tissue of the WW3-071 is constructed of high quality silicone rubber, with layers of coloration that provide a depth and realism to the product. In addition, the SOFTTECH® material has a realistic feel, and is very durable and UV resistant. The skin also contains a reinforcing fabric that provides strength, and resistance to tear propagation should the skin be punctured or cut. Blood flow is simulated through the integrated tubing with supply connector.

WW3-072 Leg Amputation



A wearable wound simulation that represents a partial leg amputation on the left leg. The wound shows exposed bone, muscle, fat, and tendons. It wraps around an actor or manikin and attaches with hook and loop fastening. Blood tubing is integrated into the construction to easily create simulated blood flow. Supplied with bleeding system. The PATENTED construction with SOFTTECH® materials, provides realism for your training scenario.

The WW3-072 operates with the included WW3-BRP Blood Supply Pump and is also compatible with SKEDCO® brand bleeding simulation equipment (sold separately).

Construction-

- The representative skin and tissue of the WW3-072 is constructed of high quality silicone rubber, with layers of coloration that provide a depth and realism to the product. In addition, the SOFTTECH® material has a realistic feel, and is very durable and UV resistant. The skin also contains a reinforcing fabric that provides strength, and resistance to tear propagation should the skin be punctured or cut. Blood flow is simulated through the integrated tubing with supply connector.

Techline Technologies, Inc. Proprietary

Data contained on all pages of this document shall not be disclosed outside the government or be duplicated, used, or disclosed in whole or in part for any other purpose than evaluation.

WW3-702 GSW Through Hand (Left)



A wearable wound simulation® that represents a gunshot wound to the left hand. The simulation shows a through and through gunshot wound exposing fat, muscle, bone, and tendons. It bleeds from entry and exit. It snugly slips onto the actor's left hand. Blood tubing is integrated into the construction to easily create simulated blood flow. Supplied with bleeding system. The PATENTED construction with SOFTTECH® materials, provides realism for your training scenario.

The WW3-702 operates with the included WW3-BRP Blood Supply Pump and is also compatible with SKEDCO® brand bleeding simulation equipment (sold separately).

Construction-

- The representative skin and tissue of the WW3-702 is constructed of high quality silicone rubber, with layers of coloration that provide a depth and realism to the product. In addition, the SOFTTECH® material has a realistic feel, and is very durable and UV resistant. The skin also contains a reinforcing fabric that provides strength, and resistance to tear propagation should the skin be punctured or cut. Blood flow is simulated through the integrated tubing with supply connector.

WW3-704 Severe Burn-Forearm (Left)



A wearable wound simulation® that represents third degree burns on the right forearm in the form of a slip on device. This wearable wound comes without a bleeding system. The PATENTED construction with SOFTTECH® materials, provides realism for your training scenario.

Construction-

- The representative skin and tissue of the WW3-704 is constructed of high quality silicone rubber, with layers of coloration that provide a depth and realism to the product. In addition, the SOFTTECH® material has a realistic feel, and is very durable and UV resistant. The skin also contains a reinforcing fabric that provides strength, and resistance to tear propagation should the skin be punctured or cut.

Techline Technologies, Inc. Proprietary

Data contained on all pages of this document shall not be disclosed outside the government or be duplicated, used, or disclosed in whole or in part for any other purpose than evaluation.



WW3-751 Partial Arm Amputation (Left)

A wearable wound simulation® that represents a partial arm amputation on the left arm. The simulation shows exposed bone, muscle, fat, and tendons. deep laceration exposing fat and muscle tissue. It wraps around an actor or manikin and attaches with hook and loop fastening. Blood tubing is integrated into the construction to easily create simulated blood flow. Supplied with bleeding system. The PATENTED construction with SOFTTECH® materials, provides realism for your training scenario.

The WW3-751 operates with the included WW3-BRP Blood Supply Pump and is also compatible with SKEDCO® brand bleeding simulation equipment (sold separately).

Construction-

- The representative skin and tissue of the WW3-751 is constructed of high quality silicone rubber, with layers of coloration that provide a depth and realism to the product. In addition, the SOFTTECH® material has a realistic feel, and is very durable and UV resistant. The skin also contains a reinforcing fabric that provides strength, and resistance to tear propagation should the skin be punctured or cut. Blood flow is simulated through the integrated tubing with supply connector.



WW3-752 Partial Leg Amputation (Left)

A wearable wound simulation® that represents a partial leg amputation on the left leg. The wound shows exposed bone, muscle, fat, and tendons. It wraps around an actor or manikin and attaches with hook and loop fastening. Blood tubing is integrated into the construction to easily create simulated blood flow. Supplied with bleeding system. The PATENTED construction with SOFTTECH® materials, provides realism for your training scenario.

The WW3-752 operates with the included WW3-BRP Blood Supply Pump and is also compatible with SKEDCO® brand bleeding simulation equipment (sold separately).

Construction-

- The representative skin and tissue of the WW3-752 is constructed of high quality silicone rubber, with layers of coloration that provide a depth and realism to the product. In addition, the SOFTTECH® material has a realistic feel, and is very durable and UV resistant. The skin also contains a reinforcing fabric that provides strength, and resistance to tear propagation should the skin be punctured or cut. Blood flow is simulated through the integrated tubing with supply connector.

Techline Technologies, Inc. Proprietary

Data contained on all pages of this document shall not be disclosed outside the government or be duplicated, used, or disclosed in whole or in part for any other purpose than evaluation.



WW3-754 Shrapnel-Full Arm (Left)

A wearable wound simulation® that represents shrapnel hitting a full left arm. Device shows superficial shrapnel wounds. Bleeding system designed to ooze from multiple locations. Supplied with bleeding system. Wrap-around hook and loop closure. The device has a channel connecting the entrance and exit wounds to allow the packing of the wound with gauze. It wraps around an actor or manikin and attaches with hook and loop fastening. Blood tubing is integrated into the construction to easily create simulated blood flow. The PATENTED construction with SOFTTECH® materials, provides realism for your training scenario.

The WW3-754 operates with the included WW3-BRP Blood Supply Pump and is also compatible with SKEDCO® brand bleeding simulation equipment (sold separately).

Construction-

- The representative skin and tissue of the WW3-754 is constructed of high quality silicone rubber, with layers of coloration that provide a depth and realism to the product. In addition, the SOFTTECH® material has a realistic feel, and is very durable and UV resistant. The skin also contains a reinforcing fabric that provides strength, and resistance to tear propagation should the skin be punctured or cut. Blood flow is simulated through the integrated tubing with supply connector.



WW3-755 GSW To Groin (Female)

A wearable wound simulation® that represents a gunshot wound to a female groin, showing muscle, fat, and an artery. Bleeding can be stopped with hemostats, junctional tourniquets or packed with QuickClot Combat Gauze or similar product. The exit wound also bleeds and is packable. The tubing within the device is designed to work with SKEDCO Field Expedient Bleeding Simulator. The PATENTED construction with SOFTTECH® materials, provides realism for your training scenario.

The WW3-755 operates with the included WW3-BRP Blood Supply Pump and is also compatible with SKEDCO® brand bleeding simulation equipment (sold separately).

Construction-

- The representative skin and tissue of the WW3-755 is constructed of high quality silicone rubber, with layers of coloration that provide a depth and realism to the product. In addition, the SOFTTECH® material has a realistic feel, and is very durable and UV resistant. The skin also contains a reinforcing fabric that provides strength, and resistance to tear propagation

Techline Technologies, Inc. Proprietary

Data contained on all pages of this document shall not be disclosed outside the government or be duplicated, used, or disclosed in whole or in part for any other purpose than evaluation.

should the skin be punctured or cut. Blood flow is simulated through the integrated tubing with supply connector.



WW3-901 Multiple Gunshot Abdomen

A wearable wound simulation® that represents a through and through gunshot wound exposing fat and muscle. All exit wounds are packable, one entry and exit can be packed through and through. Bleeds from all entry and exits. Supplied with bleeding system. Blood tubing is integrated into the construction to easily create simulated blood flow. The wearable wound wraps around the actor with a hook and loop fastener. The PATENTED construction with SOFTTECH® materials, provides realism for your training scenario.

The WW3-901 operates with the included WW3-BRP Blood Supply Pump and is also compatible with SKEDCO® brand bleeding simulation

equipment (sold separately).

Construction-

- The representative skin and tissue of the WW3-901 is constructed of high quality silicone rubber, with layers of coloration that provide a depth and realism to the product. In addition, the SOFTTECH® material has a realistic feel, and is very durable and UV resistant. The skin also contains a reinforcing fabric that provides strength, and resistance to tear propagation should the skin be punctured or cut. Blood flow is simulated through the integrated tubing with supply connector.



WW3-902 Packable Evisceration

A wearable wound simulation® that represents a packable evisceration exposing the bowels and fat tissue. It wraps around an actor or manikin and attaches with hook and loop fastening. Blood tubing is integrated into the construction to easily create simulated blood flow. Supplied with bleeding system. The PATENTED construction with SOFTTECH® materials, provides realism for your training scenario. fat and muscle tissue. It wraps around an actor or manikin and attaches with hook and loop fastening. Blood tubing is integrated into the construction to easily create simulated blood flow. The PATENTED construction with SOFTTECH® materials, provides realism for your training scenario.

The WW3-902 operates with the included WW3-BRP Blood Supply Pump and is also compatible with SKEDCO® brand bleeding simulation equipment (sold separately).

Construction-

- The representative skin and tissue of the WW3-902 is constructed of high quality silicone rubber, with layers of coloration that provide a depth and realism to the product. In

Techline Technologies, Inc. Proprietary

Data contained on all pages of this document shall not be disclosed outside the government or be duplicated, used, or disclosed in whole or in part for any other purpose than evaluation.

In addition, the SOFTTECH® material has a realistic feel, and is very durable and UV resistant. The skin also contains a reinforcing fabric that provides strength, and resistance to tear propagation should the skin be punctured or cut. Blood flow is simulated through the integrated tubing with supply



WW3-903 Blast Face Hard Bone (full mask)

A wearable wound simulation® that represents a face with third degree burns and swelling. It wraps around an actor or manikin and attaches with hook and loop fastening. Blood tubing is integrated into the construction to easily create simulated blood flow. The PATENTED construction with SOFTTECH® materials, provides realism for your training scenario.

The WW3-903 operates with the included WW3-BRP Blood Supply Pump and is also compatible with SKEDCO® brand bleeding simulation equipment (sold separately).

Construction-

- The representative skin and tissue of the WW3-903 is constructed of high quality silicone rubber, with layers of coloration that provide a depth and realism to the product. In addition, the SOFTTECH® material has a realistic feel, and is very durable and UV resistant. The skin also contains a reinforcing fabric that provides strength, and resistance to tear propagation should the skin be punctured or cut. Blood flow is simulated through the integrated tubing with supply connector.



WW3-904 Leg Amputation Hard Bone

A wearable wound simulation® that represents through-and-through gunshot to the thigh exposing fat and muscle. The device has a channel connecting the entrance and exit wounds to allow the packing of the wound with gauze. It wraps around an actor or manikin and attaches with hook and loop fastening. Blood tubing is integrated into the construction to easily create simulated blood flow. The PATENTED construction with SOFTTECH® materials, provides realism for your training scenario.

The WW3-904 operates with the included WW3-BRP Blood Supply Pump and is also compatible with SKEDCO® brand bleeding simulation equipment (sold separately).

Techline Technologies, Inc. Proprietary

Data contained on all pages of this document shall not be disclosed outside the government or be duplicated, used, or disclosed in whole or in part for any other purpose than evaluation.

Construction-

- The representative skin and tissue of the WW3-904 is constructed of high quality silicone rubber, with layers of coloration that provide a depth and realism to the product. In addition, the SOFTTECH® material has a realistic feel, and is very durable and UV resistant. The skin also contains a reinforcing fabric that provides strength, and resistance to tear propagation should the skin be punctured or cut. Blood flow is simulated through the integrated tubing with supply connector.



WW3-905 Partial Arm Amputation Hard Bone (Right)

A wearable wound simulation® that represents a partial arm amputation. The wound shows exposed bone, muscle fat and tendons. It wraps around an actor or manikin and attaches with hook and loop fastening. Blood tubing is integrated into the construction to easily create simulated blood flow. Supplied with bleeding system. The PATENTED construction with SOFTTECH® materials, provides realism for your training scenario.

The WW3-905 operates with the included WW3-BRP Blood Supply Pump and is also compatible with SKEDCO® brand bleeding simulation equipment (sold separately).

Construction-

- The representative skin and tissue of the WW3-905 is constructed of high quality silicone rubber, with layers of coloration that provide a depth and realism to the product. In addition, the SOFTTECH® material has a realistic feel, and is very durable and UV resistant. The skin also contains a reinforcing fabric that provides strength, and resistance to tear propagation should the skin be punctured or cut. Blood flow is simulated through the integrated tubing with supply connector.

Techline Technologies, Inc. Proprietary

Data contained on all pages of this document shall not be disclosed outside the government or be duplicated, used, or disclosed in whole or in part for any other purpose than evaluation.



WW3-906 Partial Leg Amputation Hard Bone (Right)

A wearable wound simulation® that represents a partial amputation of the right leg. The wound shows exposed bone, muscle, fat, and tendons. It wraps around an actor or manikin and attaches with hook and loop fastening. Supplied with bleeding system. Blood tubing is integrated into the construction to easily create simulated blood flow. The PATENTED construction with SOFTTECH® materials, provides realism for your training scenario.

The WW3-906 operates with the included WW3-BRP Blood Supply Pump and is also compatible with SKEDCO® brand bleeding simulation equipment (sold separately).

Construction-

- The representative skin and tissue of the WW3-906 is constructed of high quality silicone rubber, with layers of coloration that provide a depth and realism to the product. In addition, the SOFTTECH® material has a realistic feel, and is very durable and UV resistant. The skin also contains a reinforcing fabric that provides strength, and resistance to tear propagation should the skin be punctured or cut. Blood flow is simulated through the integrated tubing with supply connector.



WW3-907 Shrapnel Wound Axillary (Right)

A wearable wound simulation® that represents a shrapnel entry wound on top of the right shoulder, exiting in the arm pit. The wound is packable with hemostatic agent or gauze. The wound bleeds from both the entry and exit wounds. It wraps around an actor or manikin and attaches with hook and loop fastening. Blood tubing is integrated into the construction to easily create simulated blood flow. Supplied with bleeding system. The PATENTED construction with SOFTTECH® materials, provides realism for your training scenario.

The WW3-907 operates with the included WW3-BRP Blood Supply Pump and is also compatible with SKEDCO® brand bleeding simulation equipment (sold separately).

Construction-

- The representative skin and tissue of the WW3-907 is constructed of high quality silicone rubber, with layers of coloration that provide a depth and realism to the product. In addition, the SOFTTECH® material has a realistic feel, and is very durable and UV resistant. The

Techline Technologies, Inc. Proprietary

Data contained on all pages of this document shall not be disclosed outside the government or be duplicated, used, or disclosed in whole or in part for any other purpose than evaluation.

skin also contains a reinforcing fabric that provides strength, and resistance to tear propagation should the skin be punctured or cut. Blood flow is simulated through the integrated tubing with supply connector.

WW3-908 Gunshot Wound Bicep



A wearable wound simulation® that represents a high velocity gunshot wound exposing fat, muscle, hard bone, and tendons. It wraps around an actor or manikin and attaches with hook and loop fastening. Blood tubing is integrated into the construction to easily create simulated blood flow. The wound simulation bleeds from multiple locations. It is supplied with a bleeding system. The PATENTED construction with SOFTTECH® materials, provides realism for your training scenario.

The WW3-908 operates with the included WW3-BRP Blood Supply Pump and is also compatible with SKEDCO® brand bleeding simulation equipment (sold separately).

Construction-

- The representative skin and tissue of the WW3-908 is constructed of high quality silicone rubber, with layers of coloration that provide a depth and realism to the product. In addition, the SOFTTECH® material has a realistic feel, and is very durable and UV resistant. The skin also contains a reinforcing fabric that provides strength, and resistance to tear propagation should the skin be punctured or cut. Blood flow is simulated through the integrated tubing with supply connector.

WW3-909 Gunshot Wound Clavicle (Right)



A wearable wound simulation® that represents a through and through gunshot wound exposing fat, muscle, bone, and tendons. The hard bone allows students to feel crepitus. It wraps around an actor or manikin and attaches with hook and loop fastening and a chest strap. The wound is packable with hemostatic agent or gauze. Blood tubing is integrated into the construction to easily create simulated blood flow. It bleeds from the entry and exit wounds. It is supplied with bleeding system. The PATENTED construction with SOFTTECH® materials, provides realism for your training scenario. The WW3-909 operates with the included WW3-BRP Blood Supply Pump and is also compatible with SKEDCO® brand bleeding simulation equipment (sold separately).

Construction-

- The representative skin and tissue of the WW3-909 is constructed of high quality silicone rubber, with layers of coloration that provide a depth and realism to the product. In

Techline Technologies, Inc. Proprietary

Data contained on all pages of this document shall not be disclosed outside the government or be duplicated, used, or disclosed in whole or in part for any other purpose than evaluation.

addition, the SOFTTECH® material has a realistic feel, and is very durable and UV resistant. The skin also contains a reinforcing fabric that provides strength, and resistance to tear propagation should the skin be punctured or cut. Blood flow is simulated through the integrated tubing with supply connector.



WW3-BRP BLOOD SUPPLY PUMP

This simulated blood supply reservoir with manual pump is designed to attach to any Techline Trauma bleeding wearable wound simulation, Wound in a Box™, or part task trainer.

The blood flow is controlled by the operator by squeezing the hand-bulb attached to the supply line. This allows the operator to stop the blood flow when the proper medical intervention has been taken.

Construction-

- 2 liter hydration reservoir bag with screw top opening.
- Hand-bulb pump with check valve to prevent open flow.
- 30 inches of blood flow tubing with standard Techline male connector.

Techline Technologies, Inc. Proprietary

Data contained on all pages of this document shall not be disclosed outside the government or be duplicated, used, or disclosed in whole or in part for any other purpose than evaluation.

WEARABLE WOUNDS™



TRAIN MORE  **BLEED LESS®**

TECHLINE® TECHNOLOGIES, INC.

Techline Technologies, Inc. Proprietary

Data contained on all pages of this document shall not be disclosed outside the government or be duplicated, used, or disclosed in whole or in part for any other purpose than evaluation.