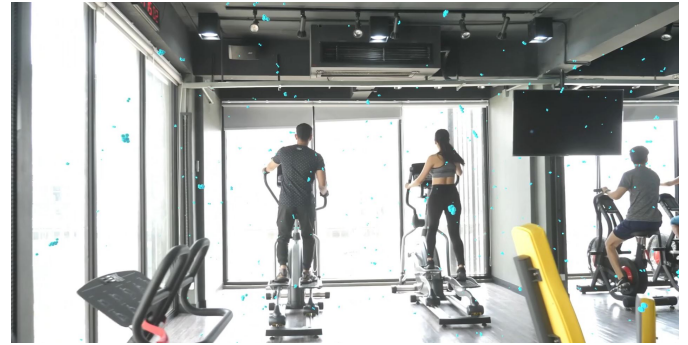


## Features & Specifications

- Active Air Purification; Easy to Install
- Distributes Purification Evenly Throughout the Environment Using Existing Duct System
- 24/7 Reduction of Odours and Particulates in the Air
- LED Function Indicator Lights Confirm Operation



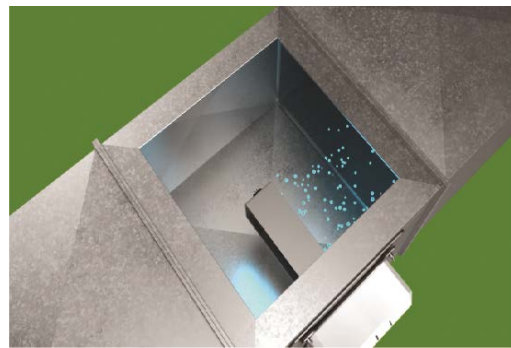
## Technology

- Active Radiant Catalysis, or ARC®, Our Proprietary Form of Photocatalytic Oxidation,
- Bi-Polar Ionization



## Applications

- Schools
- Homes
- Gymnasiums
- Veterinary Clinics
- Retirement Homes
- Apartment Buildings
- Hotels
- Grow Rooms



Molded Plastic Housing for 5", 9", 14" Models

2 Year Manufacturers Warranty

## Benefits of pureAir HVAC

Continuous Air Purification

Distributes Oxidation Evenly

No Touch Sanitization

Easy to Install

Minimal Maintenance

Ideal for All Indoor Spaces

## Active Oxidation Improves Air Quality



Our proprietary photocatalytic oxidation (PCO) technology uses energy to activate a catalyst, turning moisture into products that continuously clean your space.



Creating a plasma of electrical charges, ionization removes allergens and other harmful pathogens from the breathing space, either by pushing them away or causing them to clump together and fall to the floor.



AOPs are propelled out into your space to hunt down particulates, even the very small ones.

At the same time, negative ions go out and charge particles such as dust, pollen and pet dander, causing them to drop out of your breathing space.



With a reactive surface area 16x greater than the competition - ARC® continuously purifies your space. The result is the reduction of allergens from pets, pollen, and smoke, as well as odours from mold, mildew and more.



### To Use This Product Correctly

Read All Instructions Carefully in User Manual Before Operating Purifier.

| Model                            | 5" Cell                         | 9" Cell                     | 14" Cell                      |
|----------------------------------|---------------------------------|-----------------------------|-------------------------------|
| <b>Coverage</b> (Square Footage) | Less than 1,000 ft <sup>2</sup> | 750 - 2,500 ft <sup>2</sup> | 2,250 - 5,000 ft <sup>2</sup> |
| <b>Coverage</b> (Cubic Footage)  | 6,000 ft <sup>3</sup>           | 16,000 ft <sup>3</sup>      | 40,000 ft <sup>3</sup>        |
| <b>HVAC System</b>               | 2 - 2.5 Tons                    | 3 - 3.5 Tons                | 5+ Tons                       |
| <b>Electrical</b>                | 13 W                            | 17 W                        | 27 W                          |
| <b>Dimensions</b> (HxWxD)        | 9.75" x 9.75" x 8.75"           | 9.75" x 9.75" x 12.0"       | 9.75" x 9.75" x 17.75"        |
| <b>Weight</b>                    | 2.3 lb                          | 2.5 lb                      | 2.7 lb                        |