



# INSTRUCTIONS *Automotive*

Questions or concerns? We are glad to help. Contact info below.

If you are satisfied with your purchase, please leave us a review. Your feedback is important to us and our customers.

**Kit Includes:** Spray Bottle, Solution, Towel, Large Black Squeegee, Small Yellow Squeegee, Gasket Push Stick, Cutting Knife

**Before Application:** Fill spray bottle with filtered water almost to the top. Add solution and shake to mix.

\*Note: Please wait 48 hrs after installation before rolling down the windows.



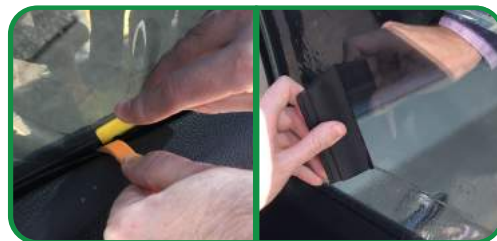
**01** Use premixed solution to clean the window. Then use yellow squeegee to remove any dirt/debris that could be on the window.



**02** Roll the window 1/3 of the way down. Spray the film & window. Apply either side of the film to the window. Then spray again.



**03** Squeegeeing from center to edge with the black squeegee, remove as much solution out from under the film as possible. Then use the yellow squeegee to gently insert the film into the left and right edges of the window.



**04** Roll up the window. Use gasket push stick and yellow squeegee to insert the bottom edge of the film into the window seal. To finish, spray then use black squeegee to remove bubbles and ensure all edges are flat.