

DC ELECTRIC AIR PUMP 12V

Note: The air pump has a memory of the pressure value used last time. The pressure value for the next use will display the pressure value set last time by default.

Note: When the air pump is powered on and does not operate for 2 minutes, it will enter standby mode. You can press any key to activate the system.

4.DEFLATION OPERATION

- 1.Remove the hose from the inflation port, then connect one end of the hose with the air pump outlet and tighten it clockwise, (FIG8). The other end is still connected to the airbag.
- 2.Press the power switch button of the air pump to start venting until all the gas is discharged, then the power can be turned off and the air venting can be stopped.



5.MAINTENANCE AND STORAGE

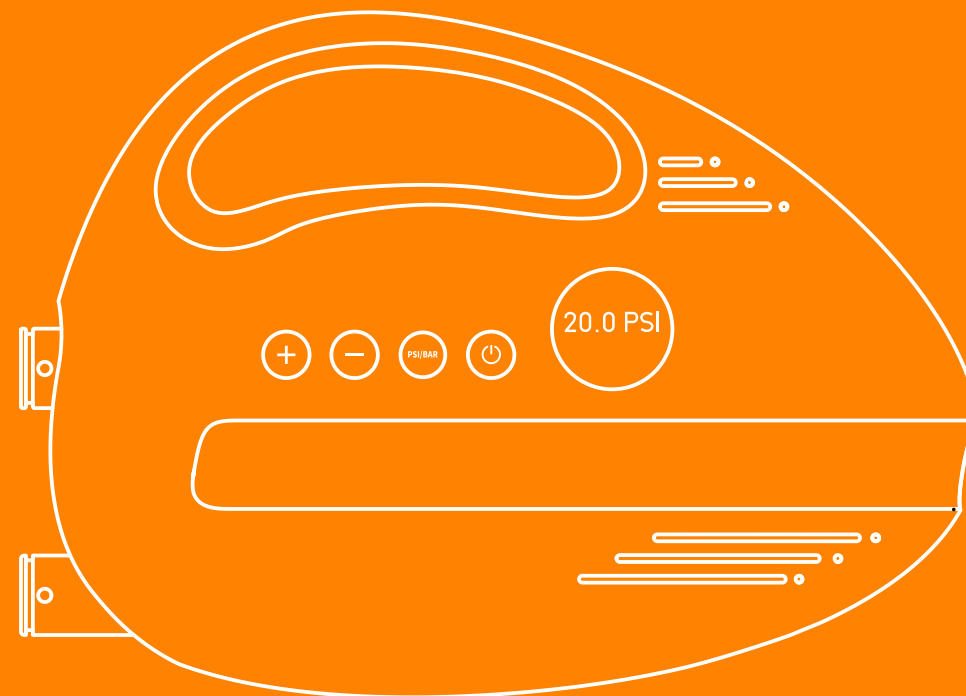
- After use, or before moving, repairing or adjusting the product, unplug it from the socket.
- When do not use, please cool it thoroughly and put it in the box.
- Please use indoors and do not be exposed to direct sunlight or rain.
- Please store in a dry and ventilated place.



6.TROUBLE SHOOTING

Fault	Inspection	Solution
The Air Pump cannot be started normally.	The power source is not plugged in properly.	Make sure that the power cable is plugged into the 12V DC socket.
	The fuse in the DC plug is faulty or worn out.	Change the fuse.
	Overheating or overload causes motor to cease.	Allow the motor to cool down and restart the Pump.
		If the problem persists, please contact the manufacturer or an authorised technician for immediate repair.
Slow or abnormal inflation.	Check whether the hose is blocked or damaged in any way.	Remove any blockages from the hose, or replace if damaged.
	The connection between the hose / Air Pump / inflation valve is not secure.	Pause the inflation, check all connections are secure and reinstall if necessary
		If the problem persists, please contact the manufacturer or an authorised technician for immediate repair.

DC ELECTRIC AIR PUMP INSTRUCTIONS

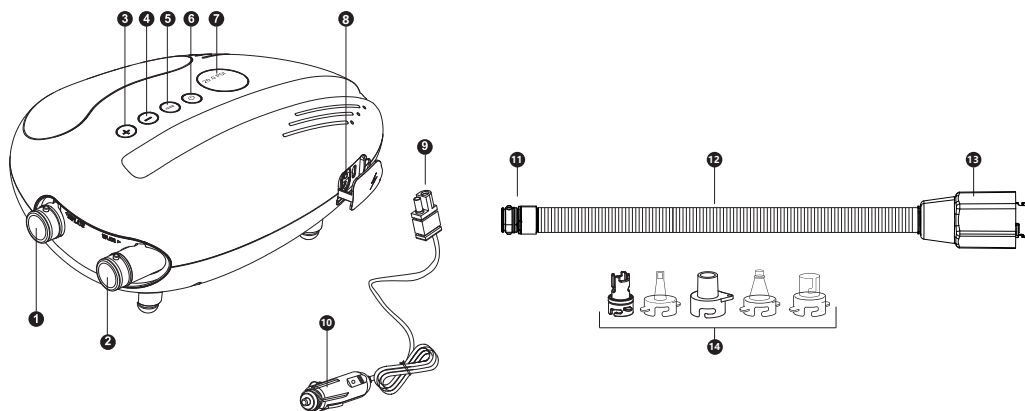


20PSI
INFLATES UP TO



DC ELECTRIC AIR PUMP 12V

DC ELECTRIC AIR PUMP is a smart DC electric air pump which can for SUP, tent, kayak and most other inflatable products, with a smart LED display and intelligent pressure control system to preset a target pressure value and auto shut off when the pressure reaches the preset target pressure value. The pump also provides air deflation function to empty the air for easy folding and storage of the inflatable products after use.



1. Deflation Port
2. Inflation Port
3. Pressure Pre-setting Up(+)
4. Pressure Pre-setting Down(-)
5. Unit Selection (PSI/BAR)

6. Power Switch (⏻)
7. Display Screen
8. Power socket
9. Power Plug
10. Cigarette Socket Plug

11. Hose to Pump Connection Side
12. Hose
13. Hose to Nozzle Connection side
14. Nozzles

1.WARNING

1. To reduce the risk of injury, do not allow children to use it. Always monitor children and those who are incapacitated. Children must stay away from the product and wires.
2. This product is not suitable for persons with physical, perceptual, or mental disabilities, or lack of skills or mental disabilities, unless their safety is protected by guardians and supervised and directed.
3. To remove, maintain, repair, or adjust this product, unplug it from the socket.
4. Do not bury the wires in the soil. Keep them in a safe place where they will not be damaged by lawn mowers or other equipment.
5. If the power cord is damaged, it must be replaced by the manufacturer or its service agent or similar authorized personnel to avoid danger.
6. Do not unplug if you are standing in water or your hands are wet.
7. Please check the maximum atmospheric pressure of the inflatable product before inflating. Exceeding the maximum allowable pressure can damage the airbag.
8. Please check the cigarette lighter socket before use, to ensure that there is no rust or residue inside, poor electrical conductivity cigarette lighter socket, may cause the product or power overheat, and damage the product.
9. The purpose of using the product is limited to those described in the instructions.

2.IMPORTANT

1. The power supply must be 12V DC power.
2. Do not block the inflation port and deflation port. Make sure the inflation port and deflation port are unobstructed at all times.
3. Comply with local garbage disposal regulations and do not dispose of air pumps at will. When the hose is damaged, do not operate this product, please replace the hose immediately.
4. Do not remove the hose while inflating. High air pressure may harm the body.
5. Do not keep the air pump working for more than 30 minutes.
6. Motor overheating may cause internal damage, please fully cool for 20-30 minutes after continuous operation for more than 30 minutes.
7. If any components are damaged, please do not use this pump. Please contact a professional for repair.
8. This product shall not be exposed to rain or water.
9. In order to avoid danger, the pump outlet or hose should not be aimed at the face or the body while the pump is working.
10. Please do not leave while inflating or deflating.
11. Please keep the vehicle ignition on while the product is in use to avoid unnecessary damage.

3.INFLATION OPERATION

1. Select a suitable nozzle and screw onto the hose (FIG1)
2. Place a suitable washer with the groove facing out (FIG2)
3. Put the end (13) of the hose into the air nozzle matching the air bag, turn clockwise and tighten it, then insert the air charging valve of the air bag, and fix it by turning clockwise (FIG3)
4. Connect the other end (11) of the hose to air pump inflation port and tighten it clockwise (FIG4)
5. Insert the car plug into a 12V DC socket (FIG5)
6. Press the pressure unit switch button "PSI / BAR" to select the unit you want.
7. Press the Pressurization button "+" or the pressure relieve button "-" to set the target pressure you want, which ranges from 0 to 20PSI (1PSI=0.0689BAR=6.89KPA). (FIG6)
8. After completing the above steps, press the power switch button to start inflating (FIG7)
9. During inflation, the target pressure value can be increased or decreased by pressing the pressurization button "+" or the pressure relieve button "-"; the pressure unit switch button "PSI / BAR" can be pressed to change the unit, but will cause the pump cease inflation to avoid over inflation by mis-operation. Press On/Off power switch to restart the inflation after your confirm the target pressure.
10. When the pressure reaches the pre-set value, the air pump will automatically stop working.
11. After inflating, pull the plug off from the 12V DC socket.
12. When not in use, remove the hose from the air pump and airbag and store it.
13. The pump will work in 2 stages. Stage 1 for fast air flow air pump unit for low pressure inflation, and when the smart pressure control system detects the pressure not increasing on stage 1 it will automatically switch to stage 2 with high pressure compressor till the pressure reaches the target value.

