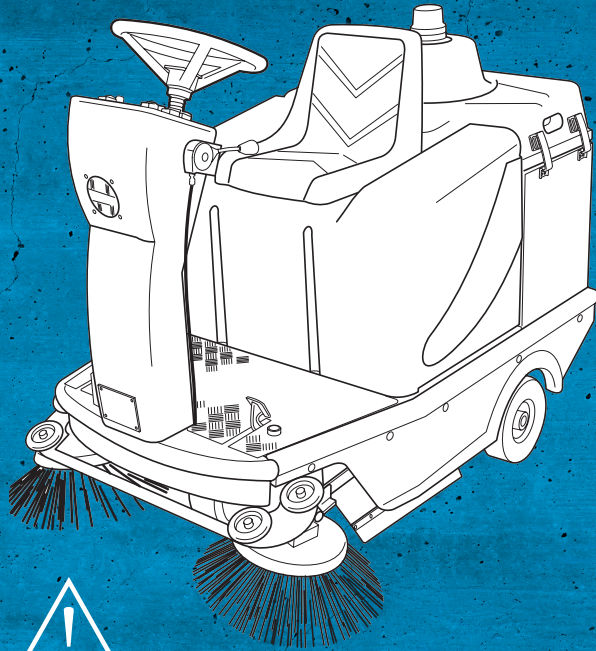




SWEeper
MV1200

MAXVAC



INSTRUCTION
MANUAL



SWEeper MV1200

Carefully read these instructions before use and keep them safely after reading for later reference.

INSTRUCTION MANUAL

SAFETY PRECAUTIONS	6
WARRANTY	7
SAFETY WARNING	8
SPARE PARTS, CLEANING & DEMOLITION	9
CONTROL PANEL	10
INSTRUCTIONS	11-12
BRUSH & BELT CHANGING	13-14
FILTER PANEL CLEANING	15
SPECIFICATIONS	16
MALFUNCTIONS	17
COMMON MAINTENANCE	17-19
EU DECLARATION OF CONFORMITY	20



Dear customer,

Thank you for choosing a MV1200 Sweeper made by MAXVAC.

The MV1200 from MAXVAC has been manufactured with the greatest care, and we hope that you will be happy with the MV1200 you have just purchased. However, if it does not fully comply with your expectations, please contact your supplier.

The MAXVAC brand was born in Switzerland to provide maximum performance equipment to deal with dust management and provide environmental cleaning solutions.

The MAXVAC team is passionate about providing the most environmentally and ecologically acceptable cleaning solutions to promote clean and healthy environments in the home town and workplace.

The MV1200 was specifically designed for the industry. This machine is suitable for domestic or collective use, e.g. in hotels, schools, hospitals, factories, shops, offices and in residences. Its functions are:

- Hoover
- Liquid vacuum cleaner
- Sweeper

We are committed to continuous effective improvement in the battle against fine dust.

For more information on our range, please visit www.max-vac.com



CONGRATULATIONS

Congratulations on your purchase, you have obtained a state-of-the-art steam vacuum system. We hope that you will enjoy your purchase for years to come.

Read ALL instructions carefully before using this product.

FOR YOUR RECORDS

Please record the model and serial number below, for easy reference, in case of loss or theft. These numbers are located on the back panel of your air purification unit. Space is also provided for other relevant information.

Model number

Serial Number

Date of Purchase

Purchased From



SAFETY PRECAUTIONS

The Manufacturer reserves the right to update and improve its production without the duty to modify the previously sold machines. Each machine is tested in our factory before being delivered.

The function of this machine is only "sweeper" therefore the Manufacturer refuses all responsibility inherent in a different use from the one set by the Manufacturer.

The user and other people are not allowed to modify, alterate, change, etc. Its products. The transgressor will be responsible for all the risks and damages caused by improper and dangerous tampering.

It's absolutely necessary to observe carefully the safety measures of UE directives and national laws which are in force to protect the safety and health of the workers.

They are the best prerogative for a better use and a warranty against injuries.

Don't use the sweeper without right safety devices (check always their functionality).

The opening of the battery cover, must be done with the motor/engine turned off and with the starting key removed. Don't touch the moving parts of the machine while it's operating. If repair is needed first turn off the sweeper. If you hear strange sounds coming from the machine turn it off and try to figure out the cause.

While using the machine do not make dangerous manouvers for you and other people. Keep foreign people away from your work. The maintenance must be done by authorized personnel. Always use original spare parts.



WARRANTY

The MAXVAC MV1200 is supplied with a 12 month warranty on material and manufacturing defects. Keep (or a copy of) your receipt in order to be able to submit the correct purchase date.

Make sure you have always this user's manual in your hands. It's very important for the user to read this manual this to make sure he understands the safety rules and the maintenance of this machine, to make it efficient and durable at all times.

However, the instruction and safety measures contained in this manual don't substitute, in any case, the safety measures existing in the country where the sweeper is used. The manufacturer declines all the responsibility for plants above the machine.

The warranty does not include defects that result from normal wear, negligence, incorrect use, repairs without permission and defects caused by connecting the fume extractor to the wrong mains voltage.

Should you determine that your unit requires a service, please contact your local dealer.



SAFETY WARNING

When the sweeper is off, take away the key to prevent non authorized people using the machine. Park the sweeper on a flat surface and enable the parking brake. If you want to transport the machine, it 's required to fix it in proper way. The waste recovered in the tank has to be treated according to the national law. Do not use this machine to recover toxicant or inflammables.

The sweeper has to be used only by skilled and authorized workers. For safety reasons and prevent damage or injury to people, the worker has to be skilled to operate the sweeper in the best way. The worker has not to use the machine if under influence of drugs, alcohol etc. And he has always to respect the security measures. The Customer is directly responsible for the machine's operator. Before switching on the machine make sure all is in perfect condition and all the safety devices are placed in the right way. While in use keep away childrens and animals. Do not leave on the machine clothes, tools, etc.

To keep the machine in good conditions do not pick up ropes, iron wires or water. To pick up bulky materials and light materials such as leaves, paper, etc. Lift the front flap using the proper lever.



SPARE PARTS, CLEANING & DEMOLITION

To order spare parts, please give always this data: model and serial number of the machine, and also the part number of the item you need listed in the spare parts list.

The machine generates a sound pressure level (noise) in an industrial environment (warehouse/ shop floor) which is less than below **80 dBA**, a vibration on the operator's handle **<2,5 m/s²**, and is therefore absolutely harmless for the operator.

However, in other surroundings, this level may be exceeded in which case the custoemr must provide appropriate protection (ear defen-ders) as well as notices to promote their use and periodic hearing examinations.

The cleaning operation must be done with the sweeper on a flat plane surface and with the parking brake engaged. Avoid aggressive products for cleaning and make sure wear protecting clothes and glasses.

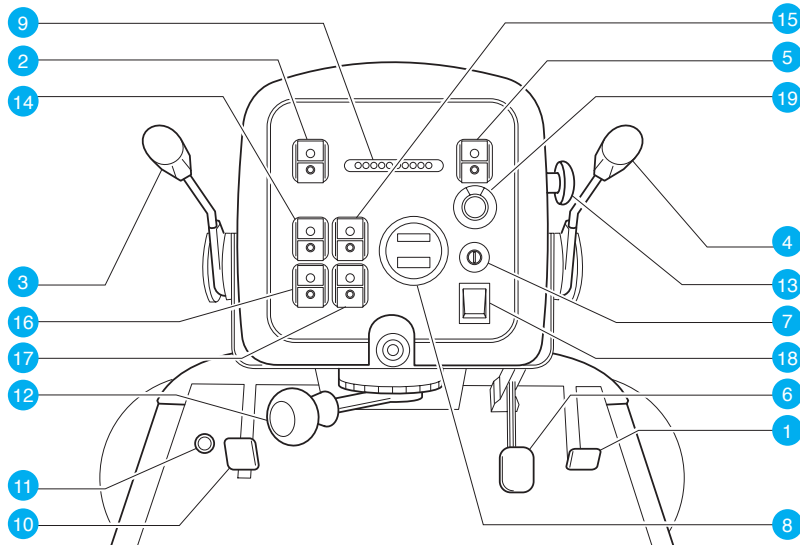
The demolition of the sweeper must be done dividing the materials that make up the sweeper itself, pay particular attention to dangerous elements for the environment such as oils etc.

These elements have to be treated by particular waste disposal plants. The demolition has to be done observing the national laws which regulate this matter.



CONTROL PANEL

- | | | | |
|---|---|----|-----------------------------------|
| 1 | Accelerator | 10 | Front flap lever |
| 2 | Electric shaker button | 11 | Horn |
| 3 | Lever for raise or lower the left side brush | 12 | Central brush control lever |
| 4 | Lever for raise or lower the left right brush | 13 | Emergency button |
| 5 | Light switch | 14 | Left brush switch |
| 6 | Service / Parking brake | 15 | Right brush switch |
| 7 | Keyswitch | 16 | Central brush switch |
| 8 | Battery level indicator | 17 | Vacuum motor switch |
| 9 | Weight upon the central brush | 18 | Forward / reverse control switch |
| | | 19 | Speed potentiometer, from 1 to 10 |



INSTRUCTIONS

Preparation

Open the vacuum motor cover 20 soon after have opened the hooks 21.

Remove the screw 22 and finally open the cover 23.

Check the battery charge level and also the demineralized water level inside the battery. The battery stands in its position thanks to the rubbers 24. Using the sweeper avoid to pick up ropes, iron wires, water, this to maintain always in good conditions the machine. Start the machine using the keyswitch 7.

Before start check if the side brushes have been raised, start them using the 14 and 15 switches.

Lower the brushes using the levers 3 and 4.

Verify that the central brush is lifted (lever 12 positioned on left side), turn on the brush motor with the switch 16.

Lower the brush using the lever 12 rotating it clockwise.

WARNING: check that the leds 9 don't reach the last red positions during the operation of the machine.

Turn on the vacuum motor using the switch 17. Anytime the user needs can clean up the filters using the shaker button 2.

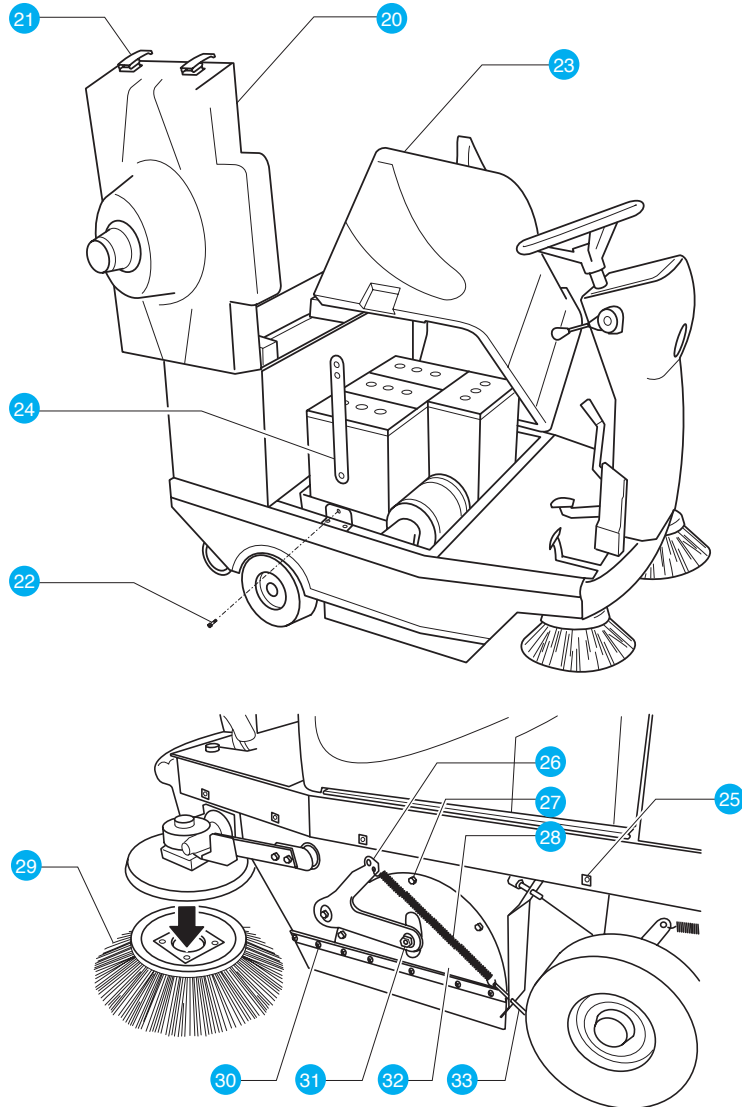
At the discretion of operator is the use of the light 5.

Engage FORWARD or REVERSE gear with the lever 18 and gradually depress the accelerator pedal 1; when REVERSE gear is engaged an acoustic BEEP - BEEP signal is emitted; With the accelerator pedal fully pressed the regulator 19 can be adjusted so as to achieve a constant speed.

During the cleaning process, the machine can recover big objects acting on the front flap pedal 10.



INSTRUCTIONS



BRUSH & BELT CHANGING

IMPORTANT: Every maintenance operation must be done with the machine turned off and the key must be taken away from the control panel.

Central brush change operation:

Remove the caps, the screws in position 25 that fix the left cover of the sweeper. Take away that cover. The result should be like in the picture above.

Remove the spring 28 and if necessary take away the regulator in position 33.

Remove the nut 31 and the screws 27 and 30. Rotate counterclockwise the lever 26. To finish the work take away also the cover 32. In this way you gain access to the central brush. Grab the cylinder brush with your hands and pull strongly. Once you had change the brush, follow these instructions backward to mount everything in the right way.

Side brushes change operation:

With the side brushes raised, grab the brush 29 you need to replace and pull strongly. To place the new one center it and push until it locks by itself.

IMPORTANT: Every maintenance operation must be done with the machine turned off and the key must be taken away from the control panel.

Belts tension adjustment:

Remove the caps, the screws in position 25 that fix the right cover of the sweeper. Take away that cover. Remove the screw 22 and finally open the cover 23. Unscrew the nut 34 and screw the 35. After reached the right tension, screw the nut 34.

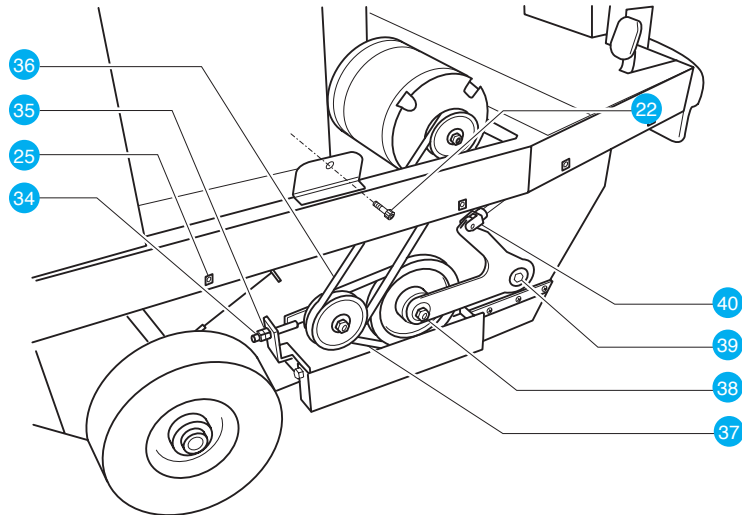
Belts change:

Change the belt 36 this way: unscrew the screws 34 and 35, drop down the belt and change it with a new one. Change the belt 37 in this way: remove the nut 38, the screw 39 and release the hook 40.

The belt is now free and can be changed with a new one. Reassemble all in the right way and adjust the belts tension as described previously.



BELT CHANGING



FILTER PANEL CLEANING

For a good dust suction and a good performant machine, keep always cleaned the filter.

For an accurate cleaning put the machine on a flat plane surface, insert the parking brake.

Open the machine back cover to get access to the filter.

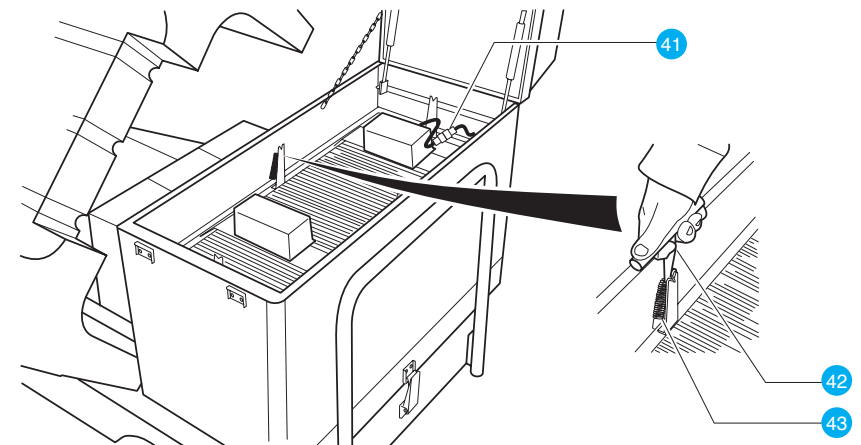
Remove the dust tank, disconnect the electric shaker 41.

Release the springs 43 that keep fixed the filter using the tool 42. Remove the filter and its steel frame.

Take away the filter and shake it on a flat surface. Clean all the dust with a vacuum cleaner.

The manufacturer suggest the customer to use always original spare parts, also for filters.

The standard sweeper uses a paper-based filter. In some cases it could be necessary use other kinds of filters (pocket filter or cartridge filters) and with a different material (e.g. Polyester). These optionals have to be bought separately.





SPECIFICATIONS

Description	Spec
Floor area cleans	8000m ² /h
Cleaning width with central cylinder brush	700mm
Cleaning width with central cylinder brush and side brushes	1200mm
Central cylinder brush diameter	ø 285/700mm
Central cylinder brush motor	24v/560w
Side brush number / diameter	ø 400mm / n1
Side brush motors	2x24v/60w
Vacuum motor power	24v/300w S1
Front traction wheel	24v/800w S1
Panel filter surface	5m ²
Electric shaker	1x24v/90w S1
Electric shaker (bag filter)	1x24v/90w S1
Dust recover tank	80 Lt
Dimensions (length x width x height)	1550 x 900 x 1250mm
Weight without batteries	330Kg
Batteries (6V 240 Ah - 4x6V 425Ah)	4
Autonomy	3,5 (240 A h) 7 (425h)



TROUBLESHOOTING

Problem	Causes	Solution
Traces of dust, dirty and objects not recovered	Cylinder brush consumed.	Adjust or change the brush
	Ropes or iron wires stucked around brush/es	Remove
Dust comes out from the sides of the machine	Filter is blocked	Clean the filter
	Side ribbers consumed	Change the rubbers
	Vacuum motor OFF	Turn on the vacuum motor
Dust comes out from the fan	Filter is broken	Change the filter
Dust comes out from the front of the machine	Front rubber of the flap is consumed	Change the rubber
Battery is flat	Demineralized water is missing	Add demineralized water
	Short circuit in the battery	Change the battery
	Battery is not charged well	Charge the battery
	The pressure on the cylinder brush is too high	Adjust the cylinder brush pressure

COMMON MAINTENANCE

The sweeper must be always in good conditions for what concerns the safety devices.

Occasionally, check the health status of the machine following the periodical maintenance. Every year, inspect the machine in order to establish the security of the machine itself.

For every replacement on the machine use always original spare parts.

The customer is directly responsible for qualified technicians who repair, maintain etc. The sweeper.



COMMON MAINTENANCE

Check	10h	40h	150h	1000h
Demineralized water in the battery	**			
Filter cleaning	**			
Filter change				**
Belts tension		**		
Electric motor carbons			**	
Brushes conditions		**		

The maintenance of the battery must be done with the sweeper switched off on a flat plane surface, with the parking brake inserted and without the starting key.

Open the vacuum motor cover 20 soon after have opened the hooks 21. Remove the screw 22 and finally open the cover 23.

Never charge the battery outdoor, but only in covered and aired places. Check the demineralized water level, and if necessary, add distilled water. Use anti-static gloves to clean and dry the battery. Do not leave any tool or metal object on the battery. Do not smoke or move fires near the battery, above all during its charging. Pay attention to the battery liquid, it's corrosive, and to the gases, which are explosive. It's advisable to wear protective glasses/ clothes when working on the battery.

Make sure the polarity on the battery is ok. Spread a layer of vaseline on the battery terminals. Do not cause short circuit, do not take current from the battery with provisory methods. Once a month check the charging level even if the machine has not been used, the battery must be charged. If the battery doesn't charge, please see the trouble shooting page.

When working near the batteries use protective glasses and clothing. Remove any metal object. Do not rest metal tools or equipment of any type on the batteries. Recharging the batteries produces explosive gas.



Ensure that the main power key switch is in the OFF position and that the batteries are disconnected before carrying out any maintenance and/or changing the brushes.

Maintenance procedures must be carried out by authorised personnel. Do not carry out any unsafe or temporary repairs or use non-original spare parts.

Regularly check the wear and deterioration of the materials and, if necessary, call out your regular supplier.

DO NOT SMOKE, LIGHT FLAMES OR MAKE SPARKS.

Ensure that the charger is switched off before disconnecting it from the batteries. Recharge the batteries in a well ventilated area and with the cover fixed in the open position.

Do not draw current from the batteries with make-shift connectors, clips or contacts. Park the cleaner on a flat and level floor and engage the parking brake.

If the cleaner is left unattended remove the key from the main power switch. Do not leave the cleaner unattended particularly if children are present. Do not use or install the cleaner in places where inflammable gases or liquids are present. Do not use inflammable liquids or chemicals with this cleaner.

Ensure that the instruction manual and warnings are always to hand and are legible. Replace any torn or missing pages. This machine must only be used on flat and level surfaces.



**WARNING
DISPOSAL OF BATTERIES MUST BE EXECUTED IN ACCORDANCE
'WITH THE LAWS OF THE COUNTRY IN WHICH THE MACHINE
WORKS.'**



EU - DECLARATION OF CONFORMITY

Sweeper

Models: MV1200

MAXVAC, hereby declares the above stated models
comply with the following or relevant part thereof:

The manufacturer declares under its sole responsibility that
the appliance, to which this declaration refers, complies with the
essential safety requirements of the following European Directives:
Directive 2006/95 EC

Directive of the European Parliament and of the Council of 12 December 2006,
on the approximation of the laws of the Member States relating to electrical
equipment. Directive 2004/108/EC

Directive of the European Parliament and of the Council of 15 December 2004
on the approximation of the laws of the Member States relating to
electromagnetic compatibility and repealing Directive 89/336/EEC

Manufacturer: MAXVAC, Schweiz.

Date: 1st September 2020.





MAXVAC



Mülibodenstrasse 3
CH-8172 Niederglatt
Zürich, Schweiz



+41(0) 43 411 4195



max-vac.com