



**MAXVAC**

# FUME EXTRACTOR WFE 2800



INSTRUCTION  
MANUAL

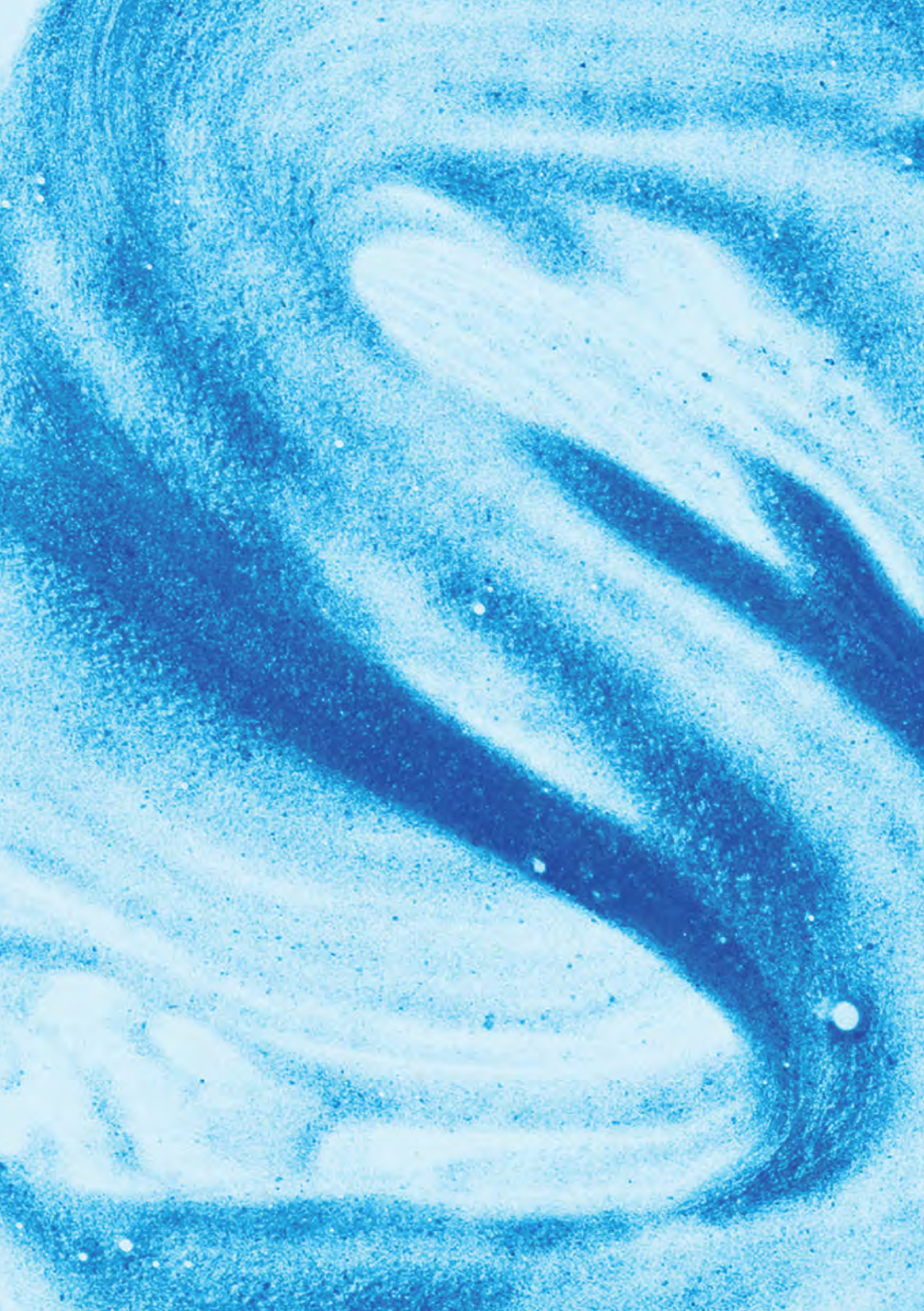
GEBRAUCHS-  
ANWEISUNG

ISTRUZIONE  
MANUALE

GEBRUIKS-  
AANWIJZING

INSTRUCTION  
MANUEL

ISTRUCCION  
MANUAL





---

# FUME EXTRACTOR WFE 2800

Carefully read these instructions before use and keep them safely after reading for later reference.

## INSTRUCTION MANUAL

SAFETY PRECAUTIONS	6-7
WARRANTY	7
WARNING	8
UNDERSTANDING YOUR FUME EXTRACTOR	9
DIRECTION OF USE	10
FILTER CLEANING	11
CLEANING & MAINTENANCE	12
TROUBLESHOOTING	13
COMMONLY ASKED QUESTIONS	14
EU DECLARATION OF CONFORMITY	15



---

Dear customer,

Thank you for choosing a WFE 2800 Welding Fume Extractor made by MAXVAC.

The WFE 2800 from MAXVAC has been manufactured with the greatest care, and we hope that you will be happy with the WFE 2800 you have just purchased. However, if it does not fully comply with your expectations, please contact your supplier.

The MAXVAC brand was born in Switzerland to provide maximum performance equipment to deal with dust management and provide environmental cleaning solutions.

The MAXVAC team is passionate about providing the most environmentally and ecologically acceptable cleaning solutions to promote clean and healthy environments in the home town and workplace.

The WFE 2800 was specifically designed for the industry.

We are committed to continuous effective improvement in the battle against fine dust.

For more information on our range, please visit [www.max-vac.com](http://www.max-vac.com)



---

# CONGRATULATIONS

Congratulations on your purchase, you have obtained a state-of-the-art welding fume extractor system. Only the finest materials surround the finest air purification technology. We hope that you will enjoy your purchase for years to come.

Read ALL instructions carefully before using this product.

## **FOR YOUR RECORDS**

Please record the model and serial number below, for easy reference, in case of loss or theft. These numbers are located on the back panel of your air purification unit. Space is also provided for other relevant information.

Model number

---

Serial Number

---

Date of Purchase

---

Purchased From

---



## SAFETY PRECAUTIONS

In order to avoid possible damages or property losses to yourself and others, please observe following safety precautions.

- **Do not pull a power line during movement or storage.**
- **Do not touch a power plug with wet hands.**
- **Do not damage the power line or power plug.**  
Do not cut, modify, pull, excessively twist and wrap the power line. Do not place a heavy object on the power line or squeeze the power line. Replace damaged power line (if any) by a professional of the Manufacturer's maintenance Department or designated department so as to avoid damage.
- **Do not use the power, socket or connecting device which are overrated, and only use 220V 50Hz AC power.**
- **Do not use it at the place where a child can have an access to it.**
- **Do not use chlorine or acid detergent.**
- **Do not put fingers or metal objects into the air inlet, air outlet and other gaps.**
- **Do not dismantle or modify the air purifier without authorization. Please contact the manufacturer for troubleshooting in case of any fault.**
- **Fully insert the plug into power socket.**
- **Regularly clean the power plug.**
- **Pull out the power plug, and dry it with dry cloth.**
- **Pull out the power plug in case of long term non-use.**
- **Switch off the power before maintenance. In the occurrence of any following circumstances, immediately switch off the power.**
  - If the switch does not work.
  - If a circuit breaker acts or the fuse burns out.
  - If the power line or plug becomes abnormally hot.
  - If burning smell or abnormal sound of vibration is found.
- **In case of any other abnormalities or faults.**
- **Entrust the manufacturer, maintenance center or a qualified technician to replace the damaged power line (if any) so as to avoid danger.**
- **Children or persons suffering disability, perceptual disturbance or mental retardation should use the air purifier under supervision and assistance of the Safety Director.**
- **Do not allow a child to operate the fume extractor without authorization.**



## SAFETY PRECAUTIONS

- **Do not place it at the following places. Unstable bearing surface.**  
Areas of High-temperature and high-humidity where the fume extractor is possibly damaged.  
**Prevent volatile substances or combustible goods such as cigarette or incense from entering into the fume extractor so as to avoid fire.**
- **Do not clean the fume extractor with alcohol, diluent or other solvent, and avoid surface contact with aerosol bomb.**
- **Do not use the fume extractor in a room where aromatic insecticide is sprayed. [After insecticide is sprayed, open windows to keep the room thoroughly ventilated, and then use the fume extractor].**
- **Do not sit on or lean against the fume extractor so as to avoid possible damage and personal injury.**
- **Correctly insert and extract the power plug so as to avoid damage to the power line.**
- **The fume extractor cannot be used to eliminate carbon oxide. When using with a non-electrical heater, please keep the air flowing.**

## WARRANTY

The MAXVAC WFE 2800 is supplied with a 12 month warranty on material and manufacturing defects. Keep (or a copy of) your receipt in order to be able to submit the correct purchase date.

Never try to repair the fume extractor yourself without prior approval from the manufacturer.

The warranty does not include defects that result from normal wear, negligence, incorrect use, repairs without permission and defects caused by connecting the fume extractor to the wrong mains voltage.


Should you determine that your unit requires a service, please contact your local dealer.



# WARNING

Please read all of the information provided in this user's guide before operating your new fume extractor unit.

This fume extractor unit is not a medical device. Do not stop or alter any medical therapy programs or medications without the advice of your physician.

	<b>CAUTION</b> RISK OF ELECTRICAL SHOCK DO NOT OPEN <b>ATTENTION</b>	
<p>Caution: TO REDUCE THE RISK OF ELECTRICAL SHOCK, DO NOT REMOVE BACK COVER. NO USER SERVICEABLE PARTS INSIDE. REFER SERVICING TO QUALIFIED SERVICE PERSONNEL.</p>		



This symbol calls attention to a feature for which you should read the enclosed literature carefully to prevent operating and maintenance problems.



This symbol indicates that insulated material within your unit may cause an electrical shock. For the safety of everyone, do not remove product covering.

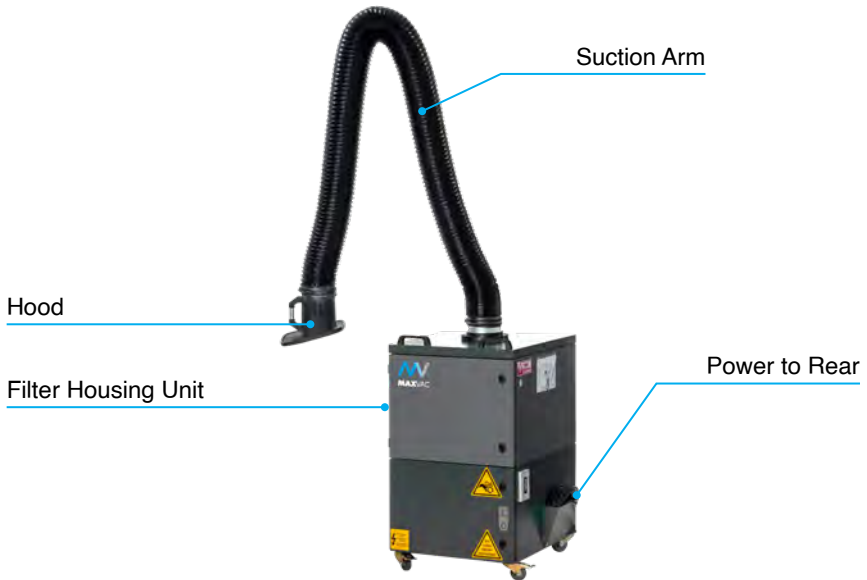
Caution: This unit is not intended for use by persons (including children) with reduced physical, sensory or mental capabilities, or lack of experience and knowledge, unless they have been given supervision concerning use of the unit by a person responsible for their safety.

Children should be supervised to ensure that they do not play with the unit.





# UNDERSTANDING YOUR FUME EXTRACTOR

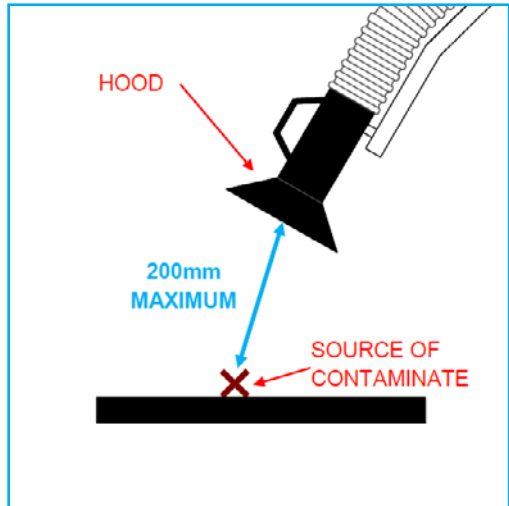




## DIRECTION OF USE

1. Use the handle on the hood to position the hood over the working area.
2. Ensure that the hood is within 8" (200mm) as labelled on the hood:

THIS HOOD MUST BE PLACED NO MORE THAN **200mm** FROM THE SOURCE OF EMISSIONS



1. Ensure the unit is switched on.

### PLEASE NOTE

The capture distance may differ from the commissioning value. Your Annual LEV Thorough examination and test will highlight any change.



---

# FILTER CLEANING

## Filter Clean

When the filters reach saturation point, filter cleaning warning appears on the screen.

Carry out the filter cleaning process within 2-3 minutes of a clean and dry compressed air hose with a pressure of 5-6 bar as shown in the picture below.



Filter elements are cleaned from coarse dirt, this process extends the life of the filter element.

If you have a model with two filters, do the same for the other air connection. Filter elements are cleaned of coarse dirt.

## Filters



When removing filters please ensure that the correct PPE is worn to protect against inhalation and Skin contact with contaminate.

The filtration media will require changing at suitable intervals. The filters are disposable and must be thrown away after use. The life of the filters will vary greatly depending upon the usage of the filter. As a guideline the filters should be replaced after 2000 hours approx. continuous use.



## CLEANING & MAINTENANCE

### Outside cleaning

Wipe off any stains with a soft cloth. More stubborn dirt should be removed with soft cloth and small amount of neutral detergent. During maintenance, do not scratch the housing with a hard object.

### Replacing filters

If the “Replacing Filter” icon lights up, it is time to replace the filter. Undo the finger screws from the back of the unit to remove the back plate. Ensure you install the new filters in the correct sequence and airflow direction.

### Maintenance of the dust sensor

After the unit has been used for approx 3 months, the air quality sensor should be cleaned to ensure air monitoring accuracy. Open the protective cover of the air quality sensor port, and wipe off dirt accumulated on the cover with a cloth or soft brush. Clean the lens & upper/lower sensor ports of the air quality sensor with slightly damp cotton swab, and then carefully dry it. Reinstall the protective cover.



## TROUBLESHOOTING

Possible issues which occur during use are listed below. If you cannot solve the troubles according to following information, please contact your local dealer.

Troubles	Possible Solutions
<b>The unit is not suctioning (No fume extraction)</b>	Connect the suction hose Replace the suction hose Check the suction line and remove the failure necessary
<b>Low Suction power (Low Fume Extraction)</b>	Replace the filter. Apply the change and disposal according to the regulation. Clean with water in accordance with the rules. Push the filter drawers until the sealing is provided correctly. Check the fan rotation direction and change the phase direction. Check the clean air outlet. If necessary, fix the problem. Check the suction path, If necessary, fix the problem.
<b>The System does not activate</b>	Make sure the mains connection is correct. Check the power connections. Ensure the mains connection/
<b>Unusal sounds</b>	Contact the MAXVAC technical team.
<b>Insufficient air supply</b>	Clean/replace filters.
<b>Smoke formation or loud noise in the fan</b>	Stop the machine. Contact the MAXVAC technical team.
<b>High vibration speed</b>	Contact the MAXVAC technical team.
<b>Power intake overvoltage</b>	Check the turning direction of the fan
<b>The fan is not working properly</b>	Stop the machine. Clean the fan.
<b>The circuit breaker is blown</b>	Check the circuit breaker, the cables, and the mains voltage.

### Part Replacement

The fume extractor is a maintenance-free device if it is used and stored with care. If you need to replace it, please contact the Manufacturer or authorised dealer.



## COMMONLY ASKED QUESTIONS

### Q. What does the Fume Extractor do?

A. The WFE 2800 treats the air in your workplace by filtering out and removing airborne particulate from your breathing space.

### Q. How does the WFE 2800 clean the air?

A. The Fume Extractor uses high airflow and a mixture of filters including HEPA filtration to capture airborne particles and fumes.

### Q. How often will the Filters need to be exchanged?

A. The WFE 2800 filters should be replaced approximately every 6 months and depends on how frequently the machine is run and the environment it is located in. If you require replacement filters, contact your local dealer.

### Q. Where should I place the Fume Extractor for optimum effectiveness?

A. The WFE 2800 should be placed as close as possible to any known source, or where the highest intensity of airborne particulates are located.



# EU - DECLARATION OF CONFORMITY

Complies with machinery directive 89/392 plus annexes.

Welding Fume Extractor

**Models:** WFE 2800

MAXVAC, hereby declares the above stated models  
comply with the following or relevant part thereof:

**Machinery Directive:**

2006/42/EC (Part 98/37/EC)

**Noise Emission Directive:**

2000/14/EC

**Electromagnetic Capability Directive:**

2004/108/EC (Part 89/336/EC)

**Low-voltage Directive:**

2006/95/EC (Part 89/336/EC)

**Filters:**

HEPA13 / Carbon / G3

EN 1822-1:2019

ISO 16890-1:2016

**Manufacturer:** MAXVAC, Schweiz.

**Date:** 1st September 2020.



**MAXVAC**



Mülibodenstrasse 3  
CH-8172 Niederglatt  
Zürich, Schweiz



+41(0) 43 411 4195



[max-vac.com](http://max-vac.com)