

# OWNER'S MANUAL

GUIDE BOOK FOR YOU

**WIAWIS** 

# TABLE OF CONTENTS

## **IMPORTANT INFORMATION** **01**

---

RECURVE BOW TERMINOLOGY  
IMPORTANT INFORMATION

## **WIN&WIN BOW RECURVE INFORMATION** **05**

---

### **WIN&WIN BOW**

stringing  
brace height

### **LIMB POCKET SYSTEM**

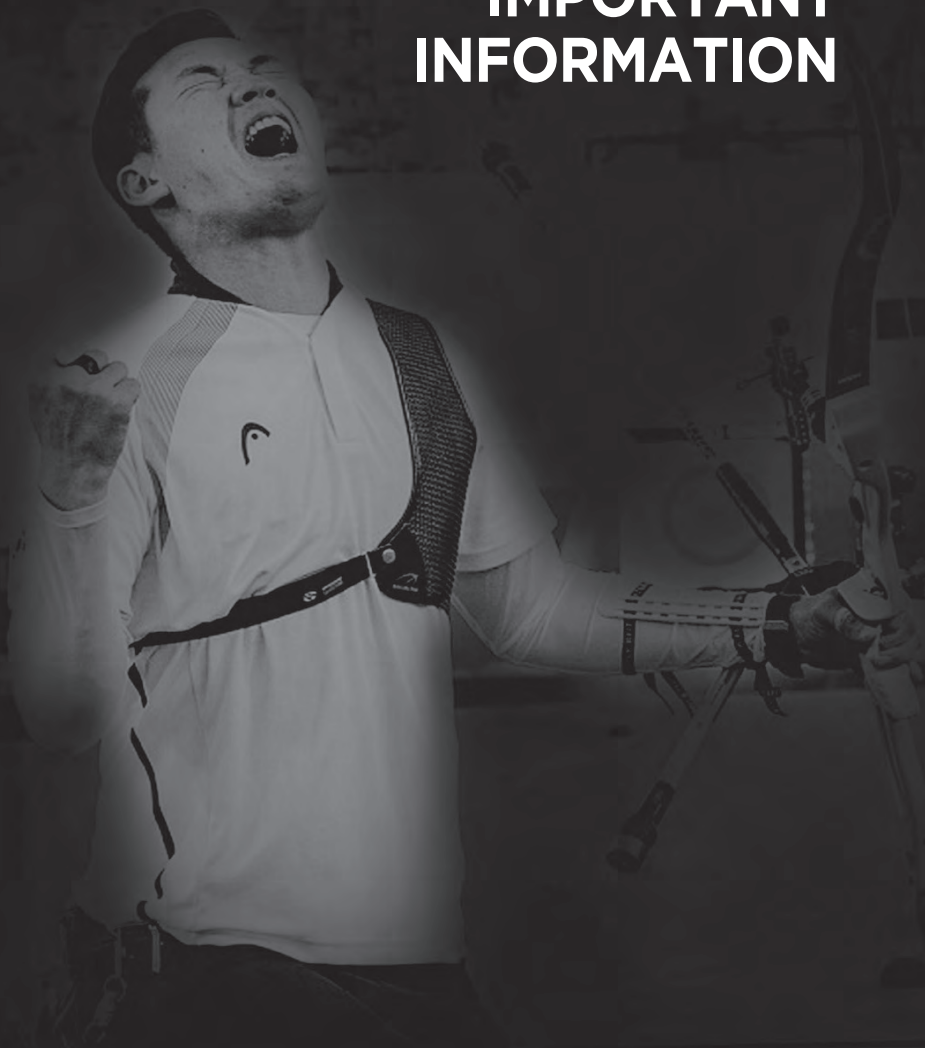
Tiller&Weight  
Weight adjustment  
Tiller adjustment  
Lims/Riser alignment adjustment  
Limbs/Riser alignment

## **WIN&WIN BOW RECURVE WARRANTY** **15**

---

WARRANTY SERVICE  
BOW OWNER'S PERSONAL RECORD

# IMPORTANT INFORMATION



## IMPORTANT INFORMATION



### 1. Completely and properly place the riser and limbs

In an attempt to improve and increase the accuracy of each bow made by WIN&WIN has a tight connection between the riser and the limb. When setting the riser and the limb, please push in limb until you hear a “tick” sound. This tick sound will assure proper limb placement. The failure to follow this procedure may result in a decreased accuracy and/or a broken limb.



### 2. Always be safe

Never shoot your bow straight up. Always be sure of your target area and the area immediately behind it.



### 3. Never expose your bow to extreme heat or prolonged extreme moisture

Excessive heat, such as could be experienced on a sunny day inside of a closed vehicle, could cause limb failure. Prolonged storage in a hot, dry attic or damp basement could also be damaging. This voids your warranty.



### 4. Inspect all arrows

Before shooting, inspect your arrows for defects. Replace cracked nocks. Discard fractured or dented arrows. Replace loose fletch.



### **5. Never dry fire your bow**

Dry fire means to draw and release your bow without an arrow. Shooting without an arrow to absorb most of the bow stored energy could cause severe damage to the bow and possible injury to the shooter or others close by.



### **6. Maintenance of bow string and bow limbs**

Apply a light coat of bow string wax to your bow's string on a regular basis. With target bows, use a quality car polish to protect the finish and luster of your bow's limbs.



### **7. Check the place of weight/tiller adjustment bolt**

When you set the string on bow, keep the weight/tiller adjustment bolt is under the bushing, if the bolt is upper than bushing, it can be shot out anywhere. It can be dangerous.

### **8. Carefully inspect your bow before each shooting session**

Carefully note condition of bow strings should be replaced. Damaged or suspect limb be reported to the dealer where you purchased your bow.

## **WARNING**

All bows are a deadly weapon. Always abide by all safety advisements. Children should be supervised by an adult.

## RECURVE BOW TERMINOLOGY



# WIN&WIN RECURVE BOW INFORMATION



## WIN&WIN RECURVE BOW INFORMATION

WIN&WIN high quality recurve limbs are available in three lengths : long, medium and short. Actual bow length is determined by the combination of limb and riser type(length). The following chart shows the relationship between 27" risers, 25" risers and 23" risers.

### WIN&WIN Recurve bows

Length of riser	Long Limbs	Medium Limbs	Short Limbs
27 inches	72"	70"	68"
25 inches	70"	68"	66"
23 inches	68"	66"	64"

WIN&WIN high quality limbs are available in marked weight from 28# to 48# in two pounds increment. This marked weight is measured at 26 1/4" (AMO standard) to the throat of the bow grip (pivot point) when the limbs are used with 25" risers basically.

Shifting the same limbs to 23" risers will result in a weight increase of approximately two pounds and on the contrary, 27" riser will result in a weight decrease of approximately two pounds. In addition, actual limb weight depends on draw length, tiller height and limb bolt setting as well as riser length

### WIN&WIN BOW

WIN&WIN Bows have a remarkable limb mounting and limb weight/tiller adjustment system. Internally, the butt end of each limb is engaged in a circular channel. That channel is adjustable for weight control and limb balance(tiller height). The special dovetail limb guide bushing aligns and captures each limb to prevent it from disengaging from the riser.

A spring loaded detent button also holds the limbs in place while stringing. To install each limb in its respective pocket, carefully enter the limb guide bushing in the dovetail groove and gently push the limb forward the limb butt seats into the channel at the back of the pocket. Firmly push the limb to engage the detent button.



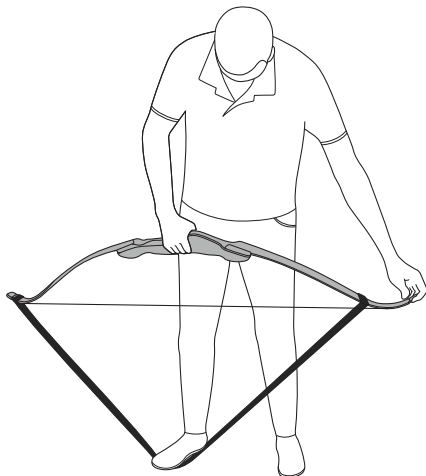
## STRINGING

---

Special attention should be given to the proper procedure for stringing any recurve bow. The safest and only procedure recommended by WIN&WIN is to use a bow stringer. Preadjust the length of the bow stringer according to the manufacturer's instructions. Begin by placing the larger loop of the bowstring over the upper limb and slipping the bowstring's smaller loop in the string groove of the lower limb.

Next, place the large cup of the bow stringer over the lower limb tip and the small cup over the upper limb top. With the upper limb of the bow held the left, step (some prefer to use both feet) on the middle of the bow stringer with instep (back of bow up) and pull with the right hand on the bow grip.

Flexing the bow sufficiently to easily slip the upper loop of the bowstring into the upper limb string groove. To unstring, reverse this procedure.



## BRACE HEIGHT

Brace height is the perpendicular distance from the bowstring to the pivot point of the handle. This height is an important part of tuning. The following chart gives you the recommended brace height range for your WIN&WIN Bow.

Length of riser	Long Limbs	Medium Limbs	Short Limbs
27 inches	22cm-24,5cm	21,5-24cm	21-23,5cm
25 inches	22-24cm	21-23,5cm	20,5-23cm
23 inches	21,5-23,5cm	20,5-23cm	20-23,5cm

Contrary to popular opinion, changing the brace height does not change bow weight. But changing brace height does drastically effect bow performance.

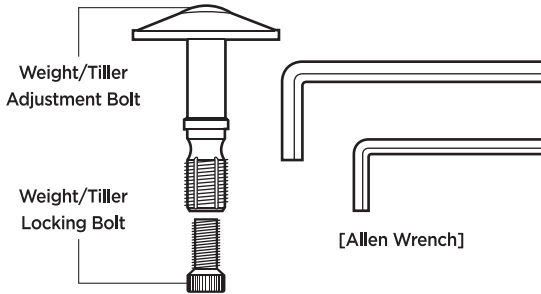
For instance, each 1/2 "change in brace height will effect velocity approximately 2 1/2 feet per second.

A higher brace height will decrease velocity. A lower brace height will increase velocity. The reason for this is that stored energy and the length of the power stroke are both effected by brace height.

Optimum brace height is on that gives smooth bow action, good arrow flight, tight grouping and a quiet shot. Generally, slight variations of string height are not critical, but at the extremes, you may get erratic arrow flight and/or excessive string noise.

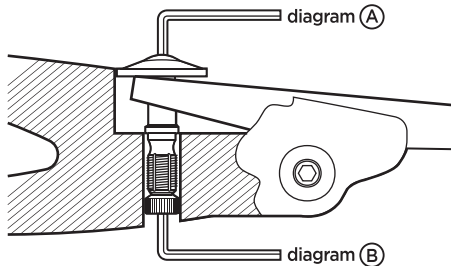
## LIMB POCKET SYSTEM

The WIN&WIN recurve limb pocket mechanism consists of the following parts.



### WEIGHT & TILLER

To adjust tiller and bow weight, first loosen the weight/tiller locking bolt completely with the allen wrench(diagram (B)).



## WEIGHT ADJUSTMENT

---

Use the allen wrench to turn the weight/tiller adjustment bolt clockwise to increase in bow weight and vice versa for decrease in bow weight(9p. diagram **(A)**).

When the correct poundage is set, tighten the locking bolt and hold adjustment bolt with the allen wrench(9p. diagram **(B)**).

The WIN&WIN BOWS are weight adjustable in a range of approximately 5% the weight indicated on the limbs by turning the bow's top and bottom limb weight adjustment bolts equally.

WIN&WIN recommends not to loosen or lock your limb weight/tiller adjustment bolts more than 2 turns from the factory setting position as it could cause the bow to violently disassemble or the limbs to severely damage.

Bow tiller should be checked after all bow weight changes.

## TILLER ADJUSTMENT

---

Strengthening or weakening one limb relative to the other is called tillering and it needs when you make the power of the two limbs balanced. Turning the Weight/Tiller adjustment bolt clockwise on one limb will strengthen that limb and decrease the distance between the limb and the string. Turning the Weight/Tiller adjustment bolt counter-clockwise will produce opposite results.

To adjust tiller on the riser without affecting bow weight, adjust each Weight/Tiller adjustment bolt an equal amount but in opposite directions.

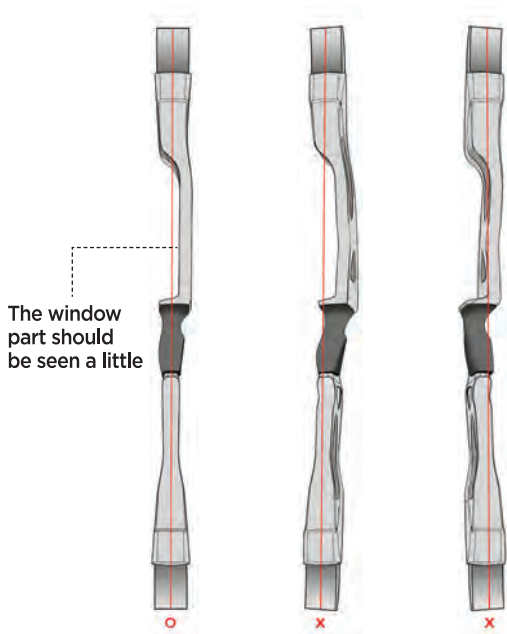
When a tiller adjustment is made, shoot several ends to stabilize the change and recheck the tiller. It is best to make tiller or weight adjustment with bow braced.

WIN&WIN recommends not to loosen or lock your limb weight/tiller adjustment bolts more than 2 turns from the factory setting position as it could cause the bow to violently disassemble or the limbs to severely damage.

## LIMBS/RISER ALIGNMENT

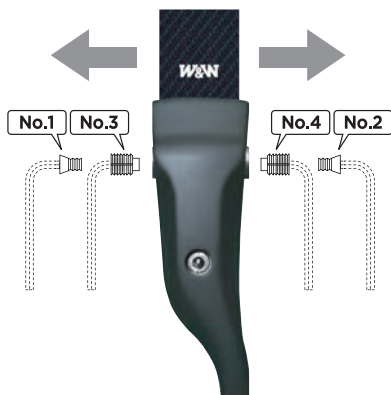
---

To ensure the proper and accurate alignment of the limb and the riser, you must first inspect the setting of the limb and the riser to make sure that the bowstring penetrates the center point of the upper and the lower limb. (during this inspection, you should also make sure that the bowstring goes through the center of the grip)



## HOW TO ADJUST LIMB/RISER ALIGNMENT

You can simply adjust the center-shot without unstringing the bow.



### **If you want to move the limbs to the left, (same as lower limb)**

1. Unscrew both locking bolts (no. 1 and no. 2) completely
2. Loosen the inside bolt (no. 3) a little
3. Lock down the inside bolt (no. 4) until the limb is set on proper position
4. When the center shot is correct, tighten the inside bolt (no. 3)
5. At last, fasten both locking bolts (no. 1 and no. 2) tightly

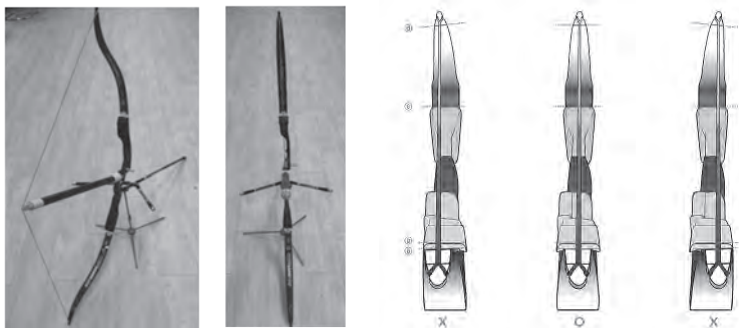
### **If you want to move the limbs to the right, (same as lower limb)**

1. Unscrew both locking bolts (no. 1 and no. 2) completely
2. Loosen the inside bolt (no. 4) a little
3. Lock down the inside bolt (no. 3) until the limb is set on proper position
4. When the center shot is correct, tighten the inside bolt (no. 4)
5. At last, fasten both locking bolts (no. 1 and no. 2) tightly

※ Don't forget to double-check the bolts fastened tightly ※

After checking limbs/riser alignment, we recommend to check the alignment at full drawing. Even though center-shot is correct at initial setup of a bow, if the limbs are not accurate, limbs twist in drawing to the full draw. This is one of the most important reasons to create torque in shooting.

You can use alignment checking device and it may help to check it easier.



## CHECKING LIMBS/RISER ALIGNMENT BY TW-BRACE



1. The TW-Brace should be adjusted so that it is as short as possible. Then turn the center section approximately halfway around to make the rotation easier.



2. String the TW-Brace just below the nocking point. Align the string and the groove, and fit the string into the groove.



3. Hold under the bow grip with one hand, and carefully draw until the other end of the TW-Brace can be fit securely into the pivot point of the handle.



4. Make sure TW-Brace comes out perpendicularly from the bow, and then increase the length by rotating the center section.



5. The TW-Brace is marked with a series of dots at 1" increments. The first dot indicates a length of 24" from the string to the pivot point.





**WIN&WIN RECURVE  
BOW WARRANTY**

## WIN&WIN RECURVE BOW WARRANTY

WIN&WIN warrants to the original owner for 2 years of the WIN&WIN recurve bow risers and 2 years of the WIN&WIN recurve bow limbs from date of purchase. WIN&WIN recurve bows are fully warranty covered against factory defects in materials and workmanship. This warranty is not transferable.

### THIS WARRANTY DOES NOT COVER :

---

1. WIN&WIN bows purchased through an unauthorized retailer or over the internet.
2. Damage to bows resulting from normal wear and tear and finish  
(Including paint, anodize and film-dipped finishes)
3. Damage to WIN&WIN accessories
4. Bows that show signs of misuse, alteration, mishandling

### WARRANTY SERVICE

---

A copy of your sales receipt and the serial number are required for warranty purposes. To obtain warranty service, you must return your bow to a WIN&WIN authorized retailer shop which you purchased at. The dealer can help you determine if WIN&WIN factory service is required or if the repair can be completed by the dealer shop. If the bow must be returned to the factory, the bow owner is responsible for the return postage. WIN&WIN in return, will pay the postage for reshipping the repaired product. Before any bow is returned to WIN&WIN, you must obtain 'Return Confirmation Number' through your dealer shop.

Bows returned to the factory without any confirmation may be denied warranty service. Repairs may be performed with original parts when available. WIN&WIN reserves the right to make part substitutions on warranty coverage for any reason. If original parts are not available, suitable replacement parts/components may be used. If WIN&WIN determines that the bow is not repairable, WIN&WIN will replace the bow through the authorized retailer shop. If the bow is not available and not in stock anymore, but qualifies for warranty coverage, WIN&WIN will replace the bow with the similar featured bow in WIN&WIN's sole determination.

**Any bow returned to the WIN&WIN factory for warranty service :**

---

1. Must be sent postage paid
2. Must include a copy of the dated sales receipt
3. Must include a short note explaining the nature of the problem

**BOW OWNER'S PERSONAL RECORD**

---

**SERIAL #**

**BOW MODEL**

**DEALER NAME OR WHERE PURCHASED**

**PURCHASED DATE**

**LENGTH**

**WEIGHT**

**OWNER's  
MANUAL**

GUIDE BOOK FOR YOU

**WIN&WIN**

19, Donghanggongdan-gil, Yangseong-myeon, Anseong-si, Gyeonggi-do, 17502, KOREA  
T +82 31 671 0894 F +82 31 671 0895

[www.wiawis.com](http://www.wiawis.com) | [www.win-archery.com](http://www.win-archery.com)