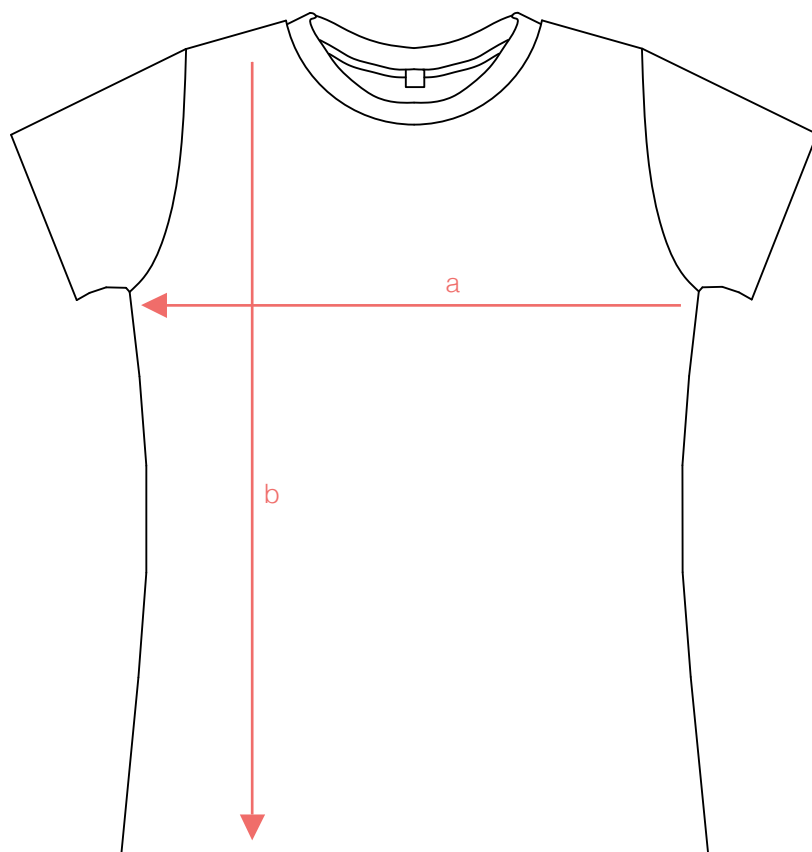


# Tabella Taglie

DONNA

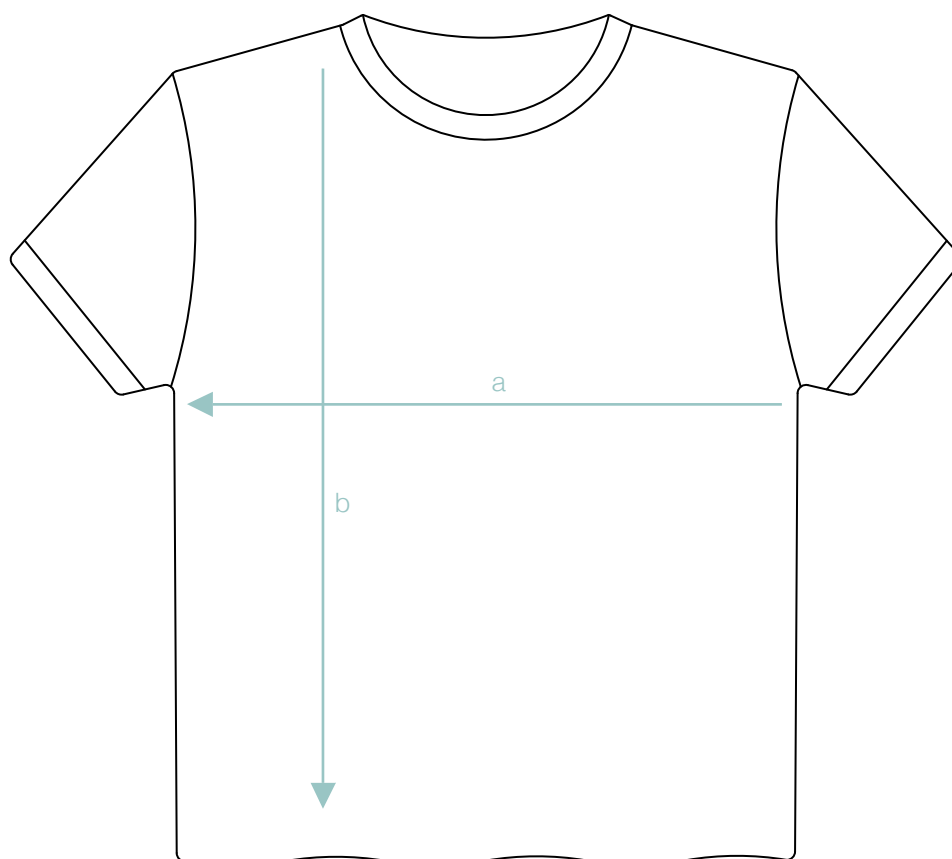


Taglia	a	b	
XS	42	63	cm
S	44.5	64	cm
M	47	65	cm
L	49.5	66	cm
XL	52	67	cm



# Tabella Taglie

UOMO



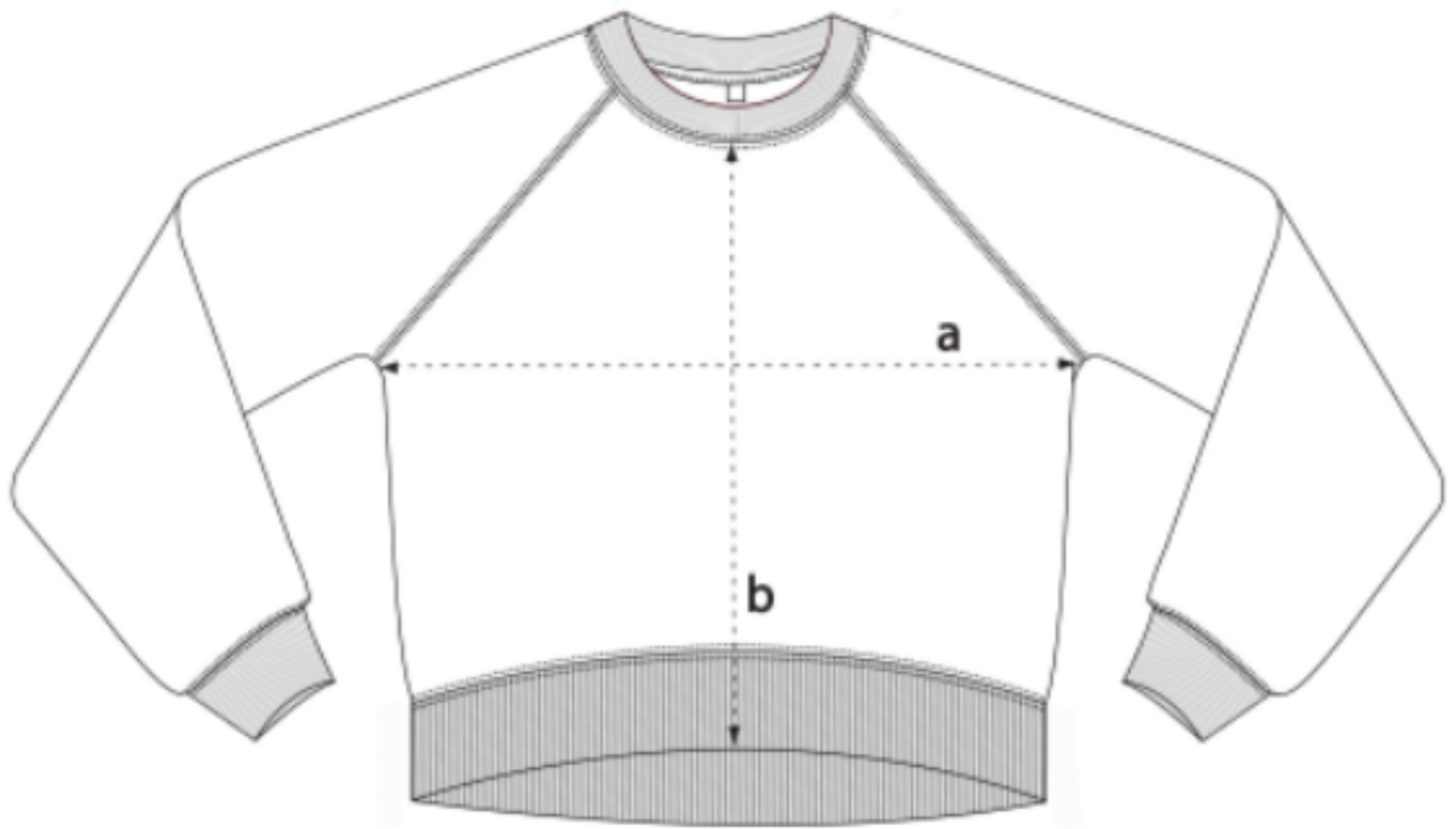
Taglia	a	b	
S	50	70	cm
M	53	72	cm
L	56	74	cm
XL	60	76	cm
XXL	64	78	cm



**[flò-ra]**



*-MODELLO ORIGINAL-*

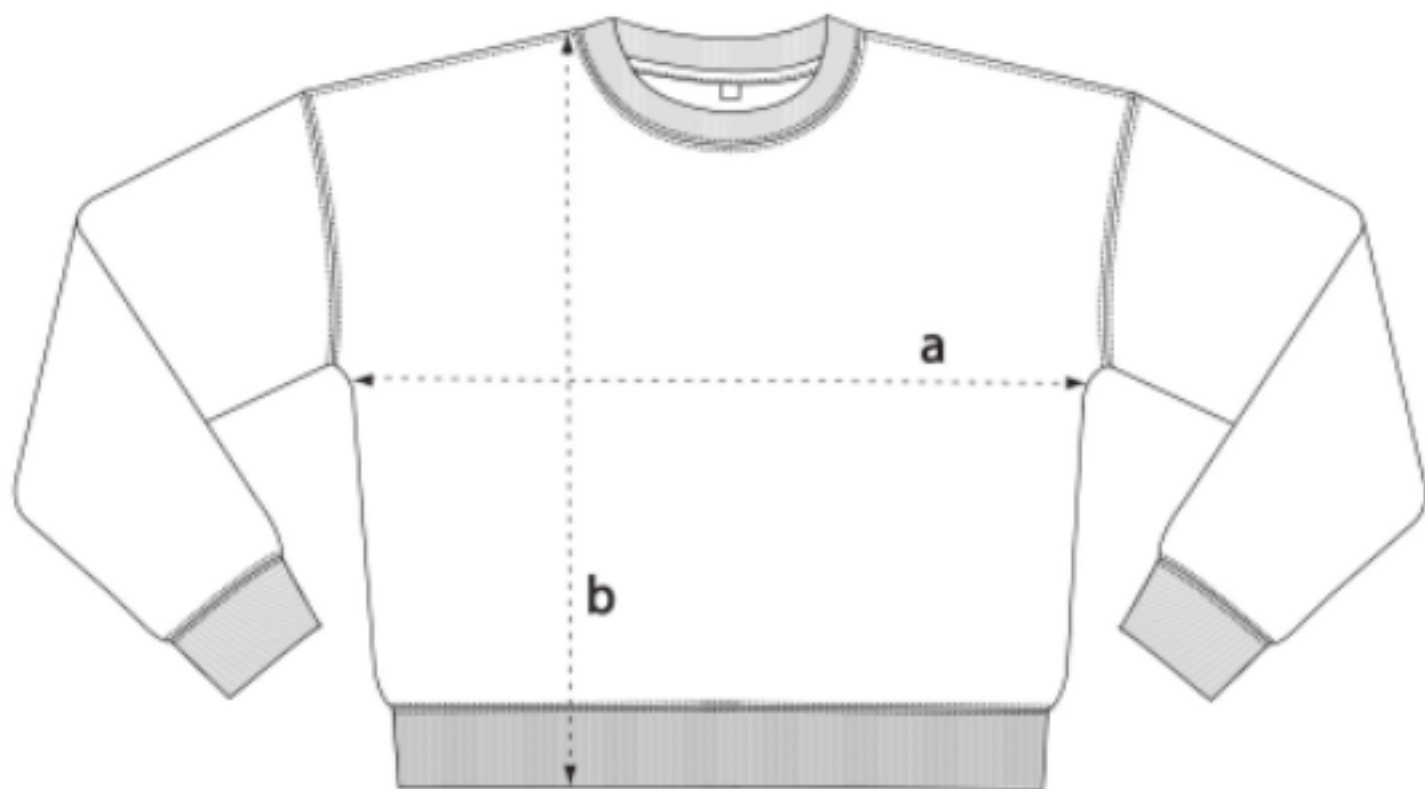


	S	M	L	XL
<b>a</b>	<b>55</b>	<b>58</b>	<b>61</b>	<b>64</b>
<b>b</b>	<b>49,5</b>	<b>51</b>	<b>52,5</b>	<b>54</b>

**[flò-ra]**



*-MODELLO SPALLE CADENTI-*



S M L XL

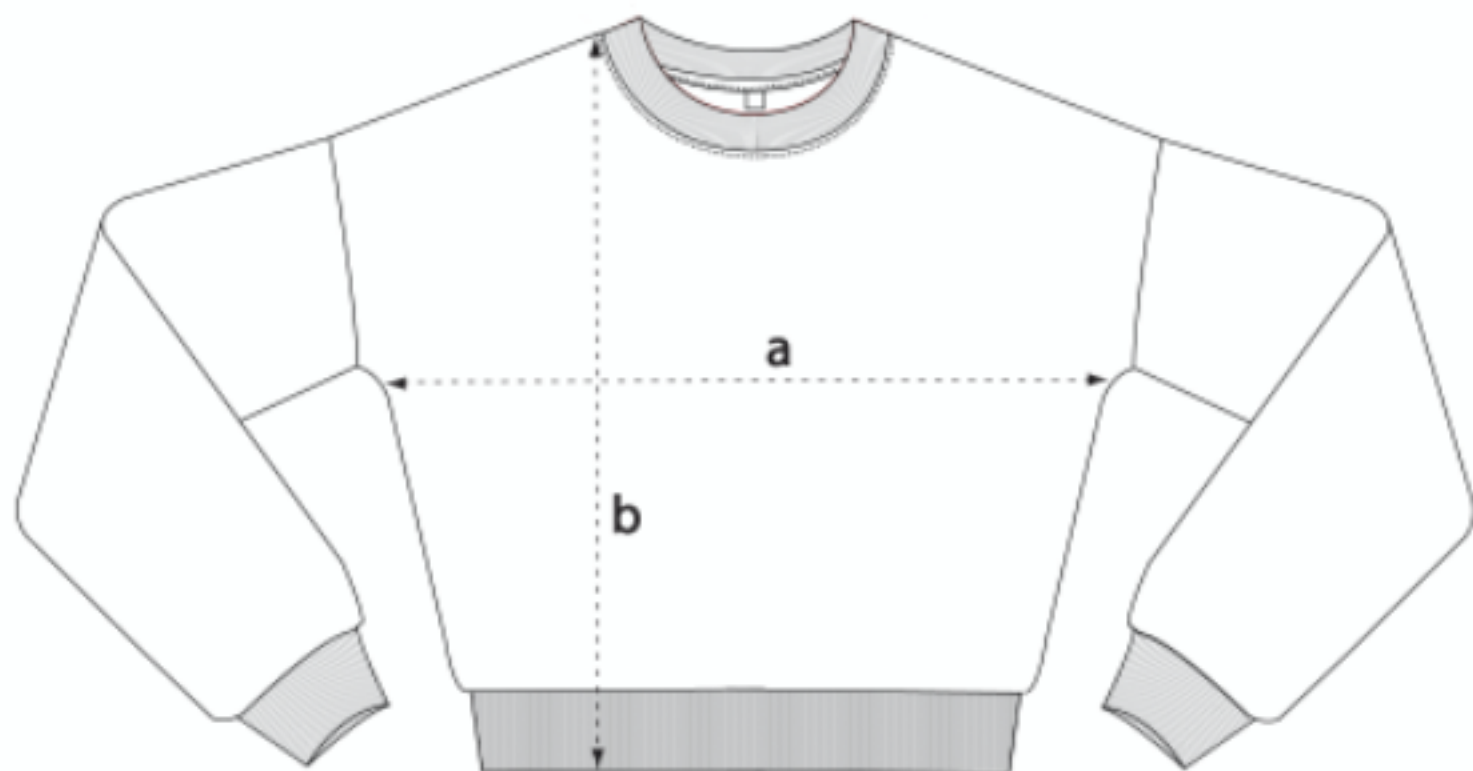
**a 57 60 63 66**

**b 58 60 62 64**

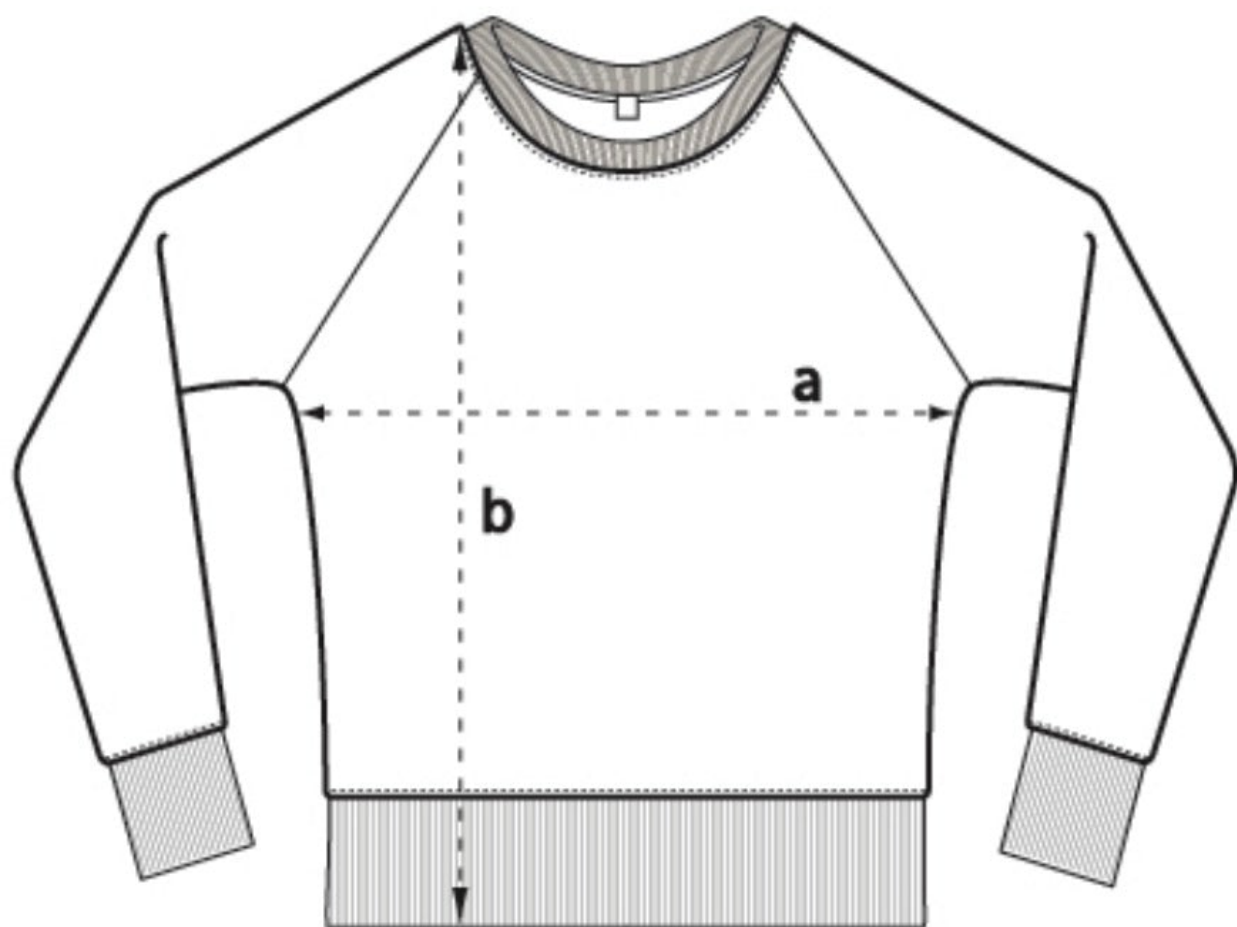
**[flò-ra]**



*-MODELLO CROP-*



	S	M	L	
<i>a</i>	52	55	58	cm
<i>b</i>	52,5	54,5	56,5	cm



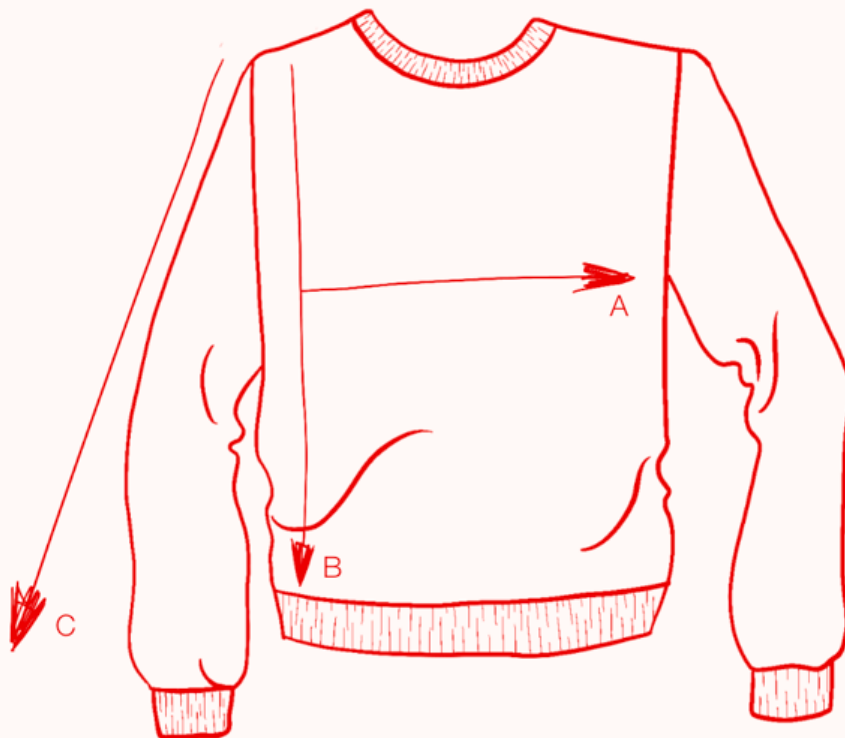
**XS      S      M      L      XL      XXL**

**a**    18 1/2    19 3/4    20 3/4    22    23 1/4    24 1/2    inch  
          47        50        53        56        59        62        cm

**b**    26 3/4    27 1/2    28    28 1/2    29 1/4    29 3/4    inch  
          68        69.5     71        72.5     74        75.5     cm

# tabella taglie

## CASIMIRO UNISEX

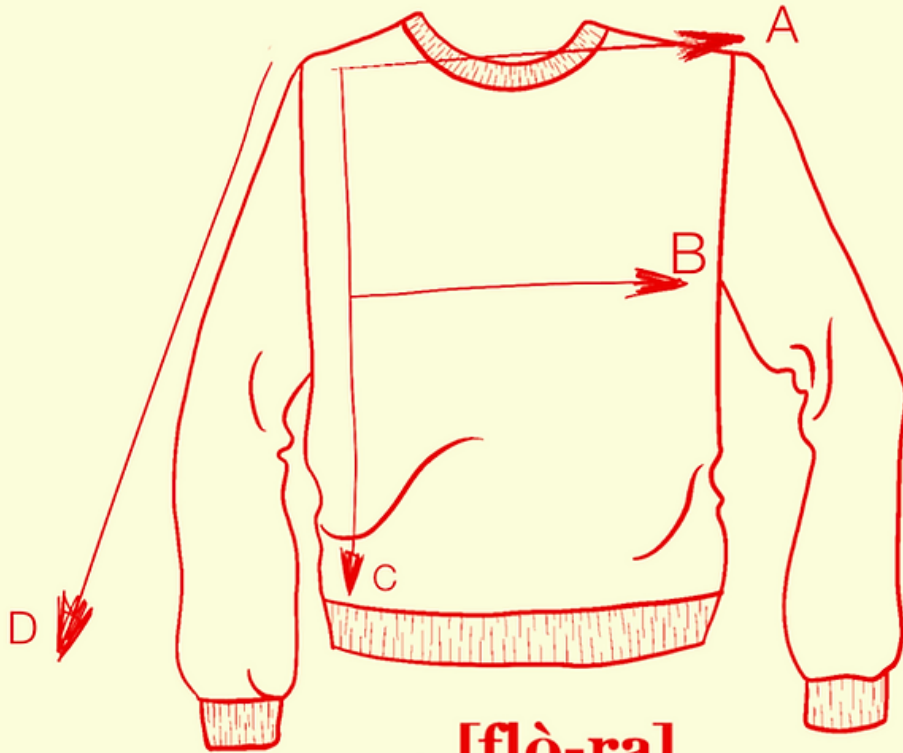


**[flò-ra]**



Tg	A	B	C
S	48 cm	62 cm	66 cm
M	50 cm	63 cm	66 cm
L	52 cm	65 cm	67 cm
XL	54 cm	67 cm	67 cm

70% lana merino 30% cashemere  
MADE IN ITALY



**[flò-ra]**



Tg	A	B	C	D
XS	32 cm	40 cm	52cm	55 cm
S	32 cm	43 cm	55 cm	55 cm
M	34 cm	45 cm	56 cm	55 cm
L	37 cm	49 cm	60 cm	55 cm