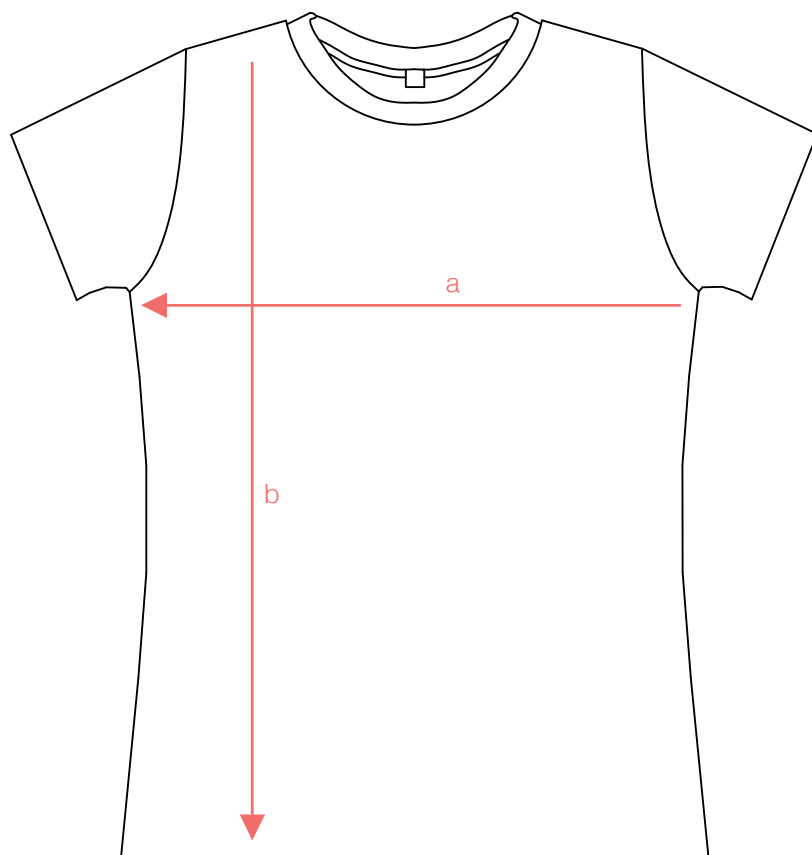


Tabella Taglie

DONNA

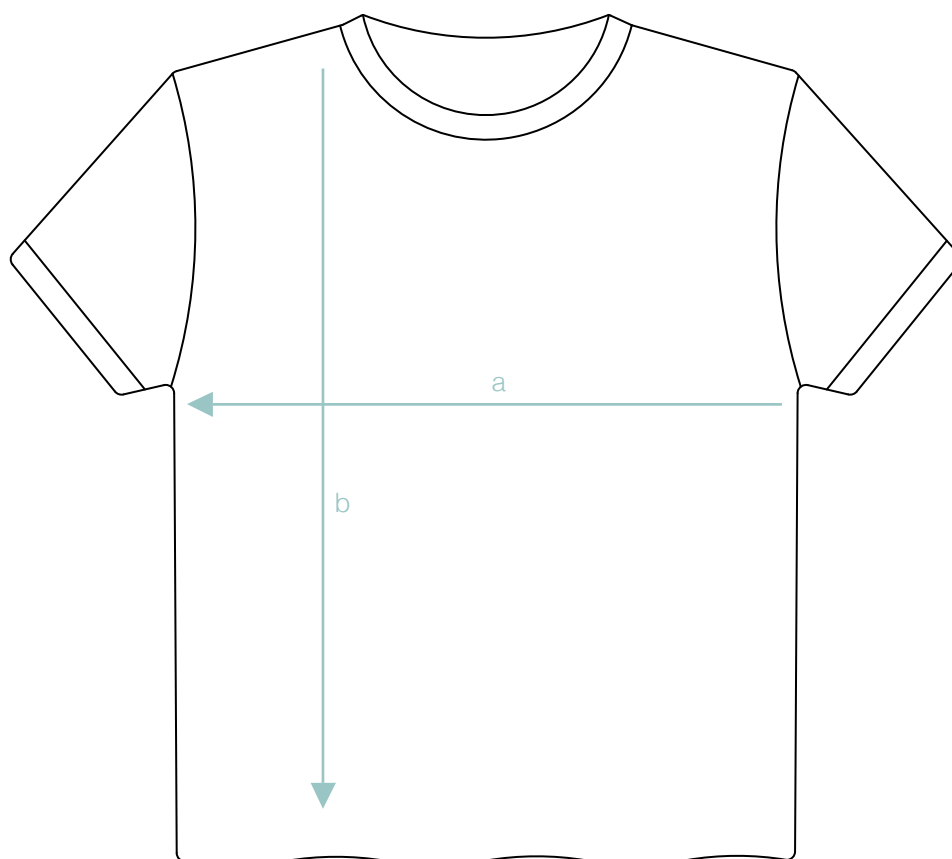


Taglia	a	b	
XS	42	63	cm
S	44.5	64	cm
M	47	65	cm
L	49.5	66	cm
XL	52	67	cm



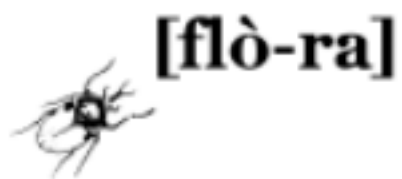
Tabella Taglie

UOMO



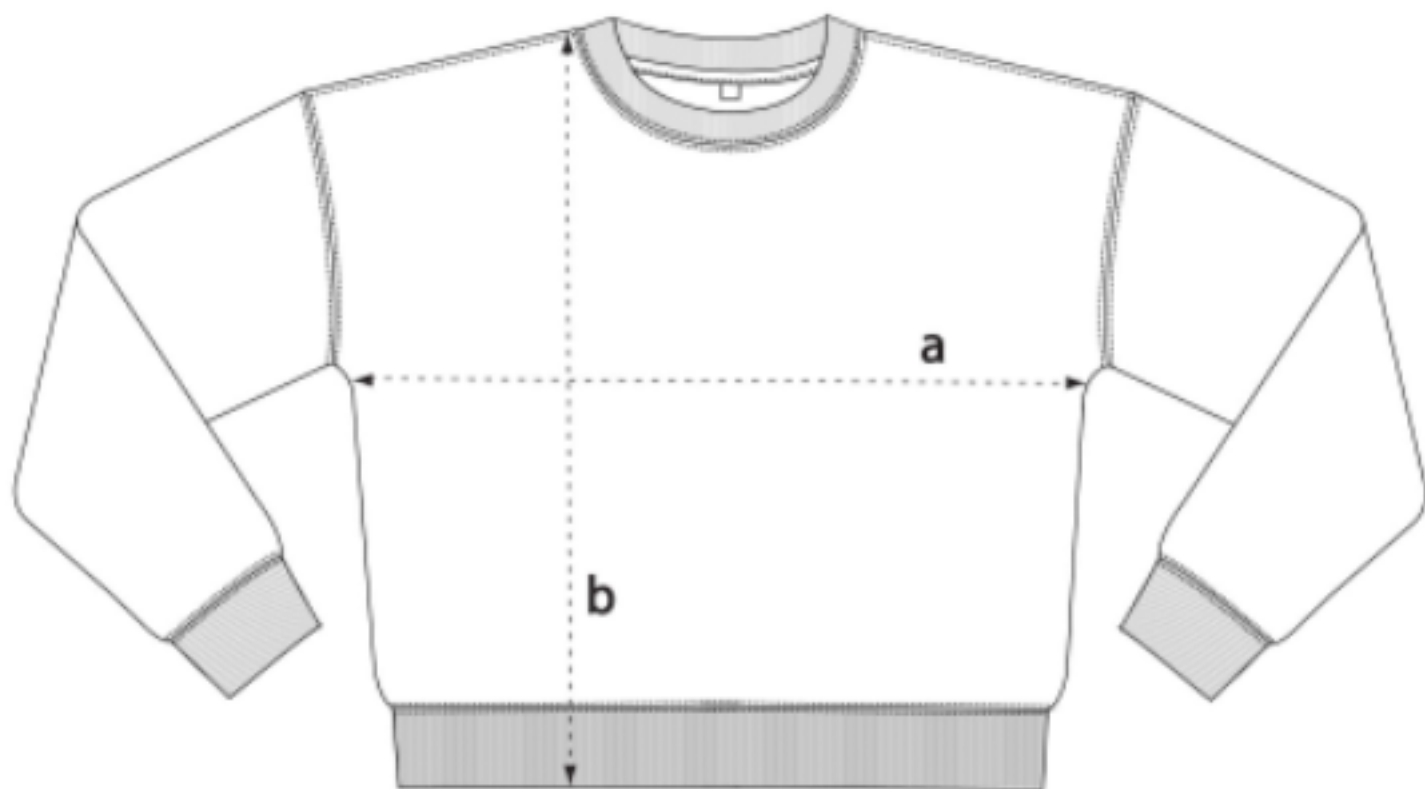
Taglia	a	b	
S	50	70	cm
M	53	72	cm
L	56	74	cm
XL	60	76	cm
XXL	64	78	cm





[flò-ra]

-MODELLO SPALLE CADENTI-



S M L XL

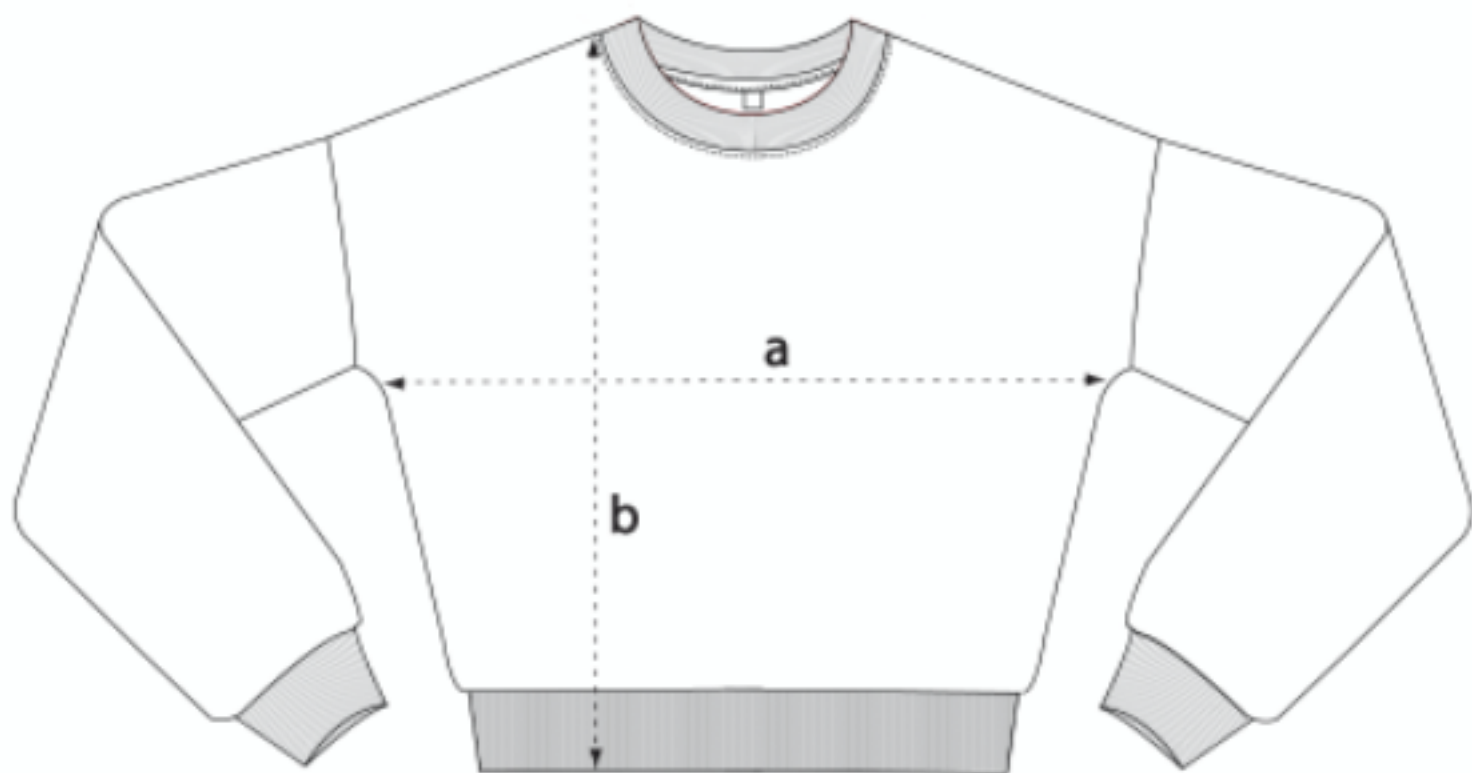
a 57 60 63 66

b 58 60 62 64

[flò-ra]



-MODELLO CROP-



S

M

L

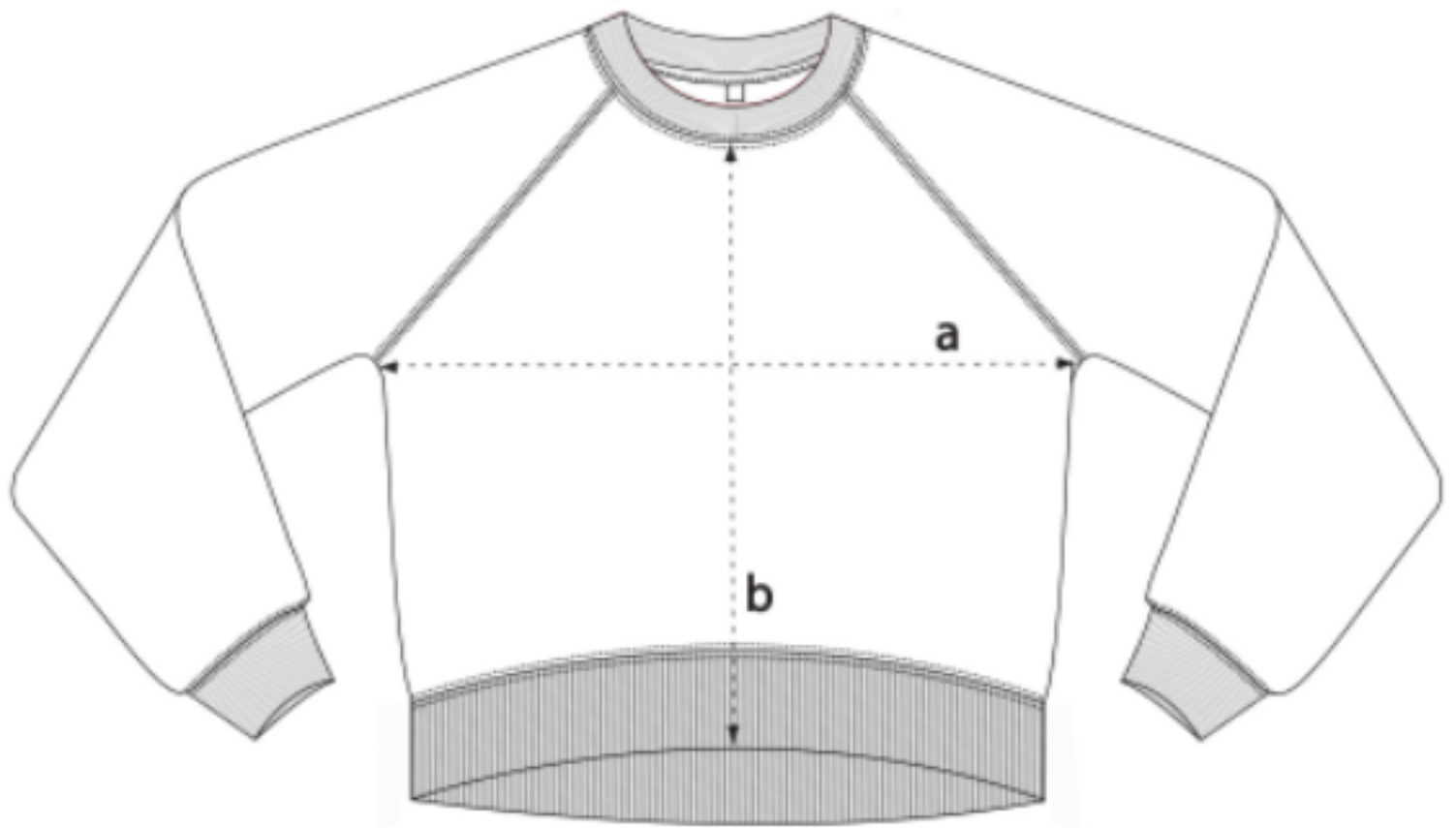
a 52 55 58 cm

b 52,5 54,5 56,5 cm

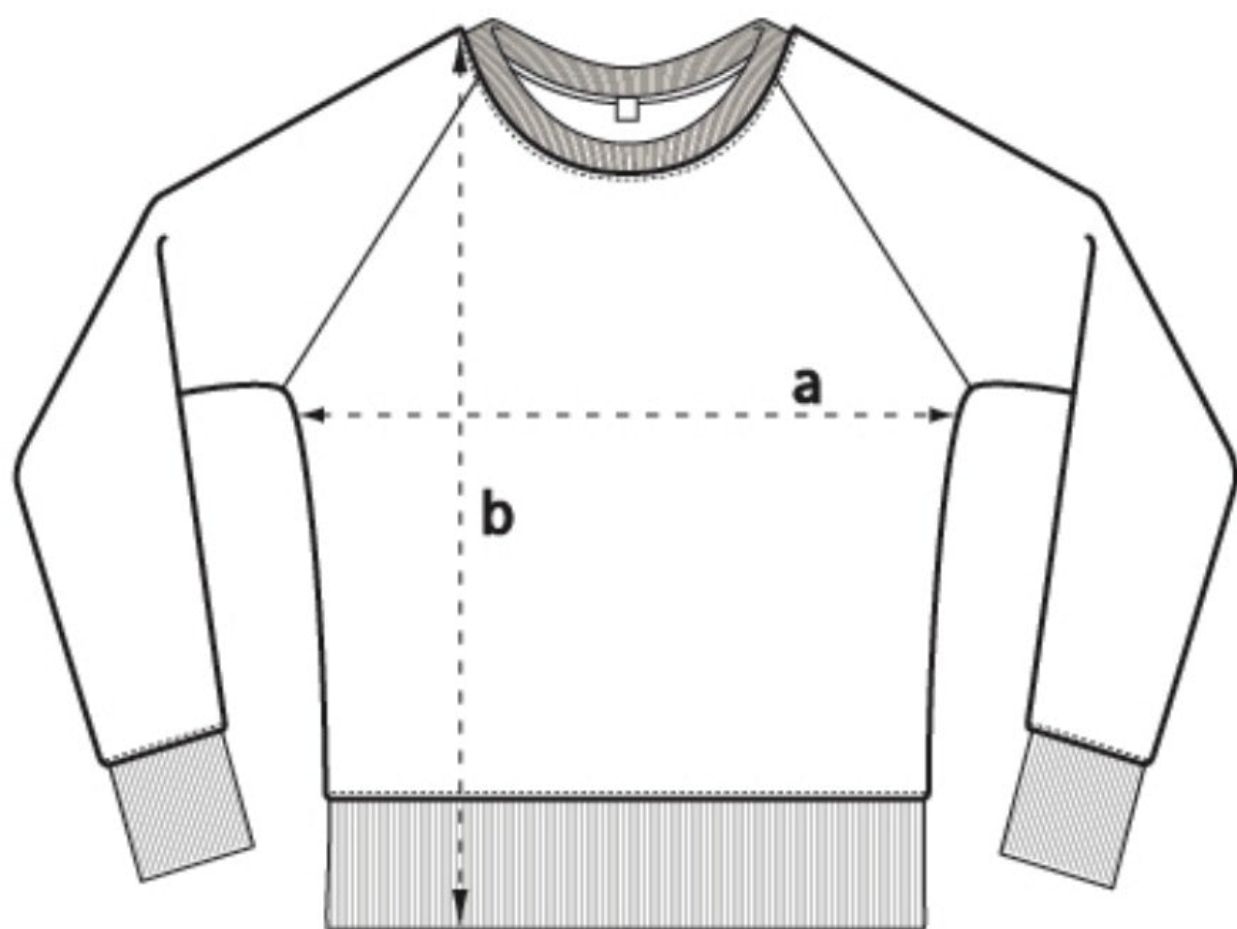
[flò-ra]



-MODELLO ORIGINAL-



	S	M	L	XL
a	55	58	61	64
b	49,5	51	52,5	54



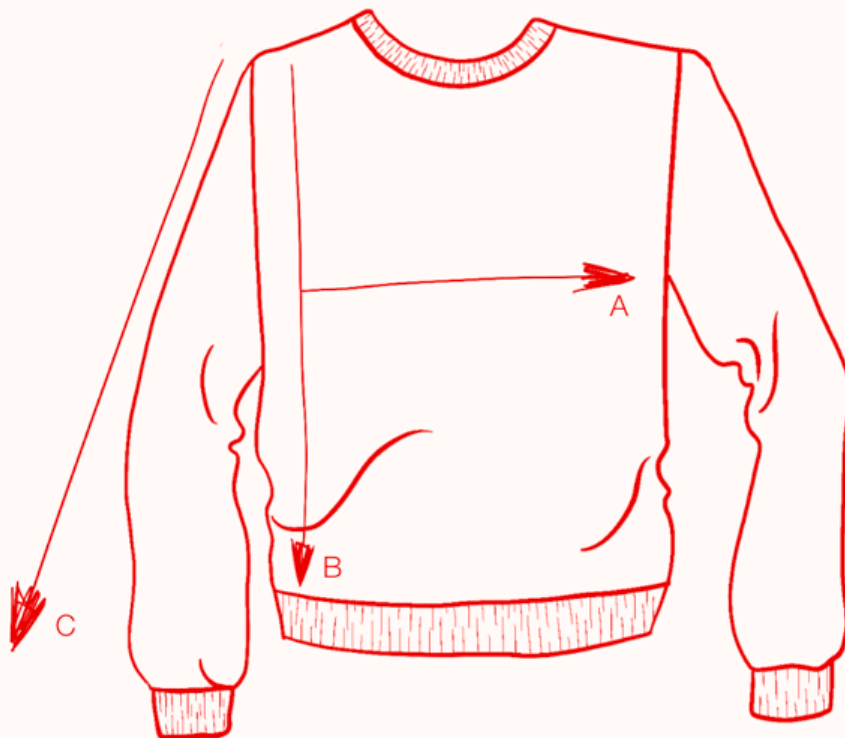
XS S M L XL XXL

a 18 1/2 19 3/4 20 3/4 22 23 1/4 24 1/2 inch
 47 50 53 56 59 62 cm

b 26 3/4 27 1/2 28 28 1/2 29 1/4 29 3/4 inch
 68 69.5 71 72.5 74 75.5 cm

tabella taglie

CASIMIRO UNISEX

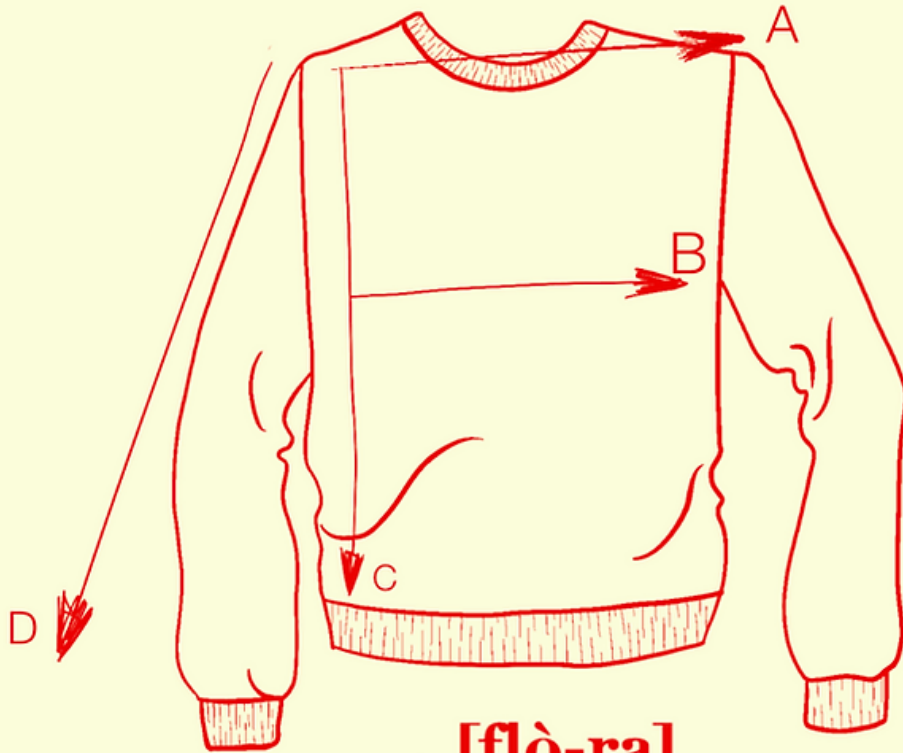


[flò-ra]



Tg	A	B	C
S	48 cm	62 cm	66 cm
M	50 cm	63 cm	66 cm
L	52 cm	65 cm	67 cm
XL	54 cm	67 cm	67 cm

70% lana merino 30% cashemere
MADE IN ITALY

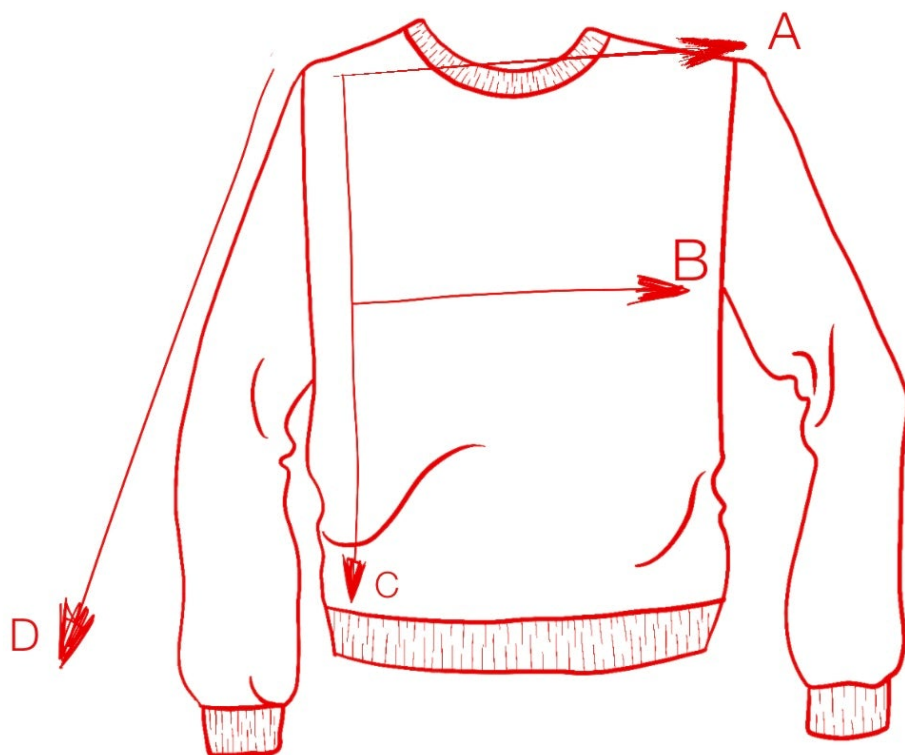


[flò-ra]



Tg	A	B	C	D
XS	32 cm	40 cm	52cm	55 cm
S	32 cm	43 cm	55 cm	55 cm
M	34 cm	45 cm	56 cm	55 cm
L	37 cm	49 cm	60 cm	55 cm

Tabella taglie
CLOROFILLA-



Tg	A	B	C	D
S - M	38 cm	48 cm	55 cm	61 cm
L - XL	41 cm	51 cm	61 cm	61 cm



[flò-ra]

100% COTONE
MADE IN ITALY